

Last avalanche report in the season: avalanche activity generally low



Allgäuer Vorberge, Allgäuer Hauptkamm, Werdenfelser Alpen, Bayerische Voralpen West, Chiemgauer Alpen West, Bayerische Voralpen Mitte, Bayerische Voralpen Ost, Chiemgauer Alpen Ost, Berchtesgadener Alpen, Ammergauer Alpen



Avalanche problems



Danger ratings

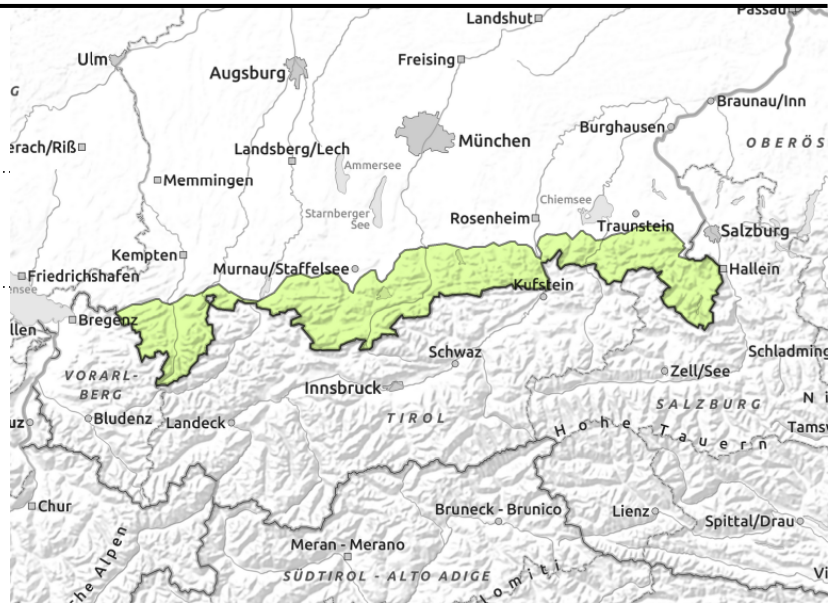
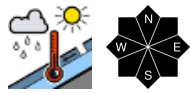


Expositions





Allgäuer Vorberge, Allgäuer Hauptkamm, Werdenfeller Alpen, Bayerische Voralpen West, Chiemgauer Alpen West, Bayerische Voralpen Mitte, Bayerische Voralpen Ost, Chiemgauer Alpen Ost, Berchtesgadener Alpen, Ammergauer Alpen



Heed danger of being swept along by wet snow avalanches.

Avalanche danger in the Bavarian Alps is low. Wet snow can still be problematic. Where there is still enough snow, wet snow can trigger naturally as loose snow avalanches in very steep terrain or be released by 1 skier. Heed danger of being swept along. Only on few steep grass-covered slopes or rock slabs still possibility of wet glide snow avalanches. In higher altitude terrain with usually high quantities of snow, there can be wet glide snow avalanche entrainment in the track, in isolated cases up to medium size.

Snowpack structure

A few centimeters of new snow will fall and be deposited atop a wet snowpack surface. The new fallen snow will become moist rapidly and forfeit its bonding. The snowpack is thoroughly moist down to the ground, in partly even wet. Where the water seeps down to and accumulates at the ground, gliding movements over smooth ground are promoted. Everywhere at higher altitudes there are still above-average quantities of snow. At intermediate altitude there are still isolated larger cohesive snowfields. Lower areas are widespread bare of snow.

Outlook

Locally, heavy precipitations can raise avalanche activity for a brief time. In general, avalanche danger drops more and more as the snowpack melts.

Translated by Jeffrey McCabe, www.creativtrans.com

Avalanche problems



Danger ratings



Expositions

