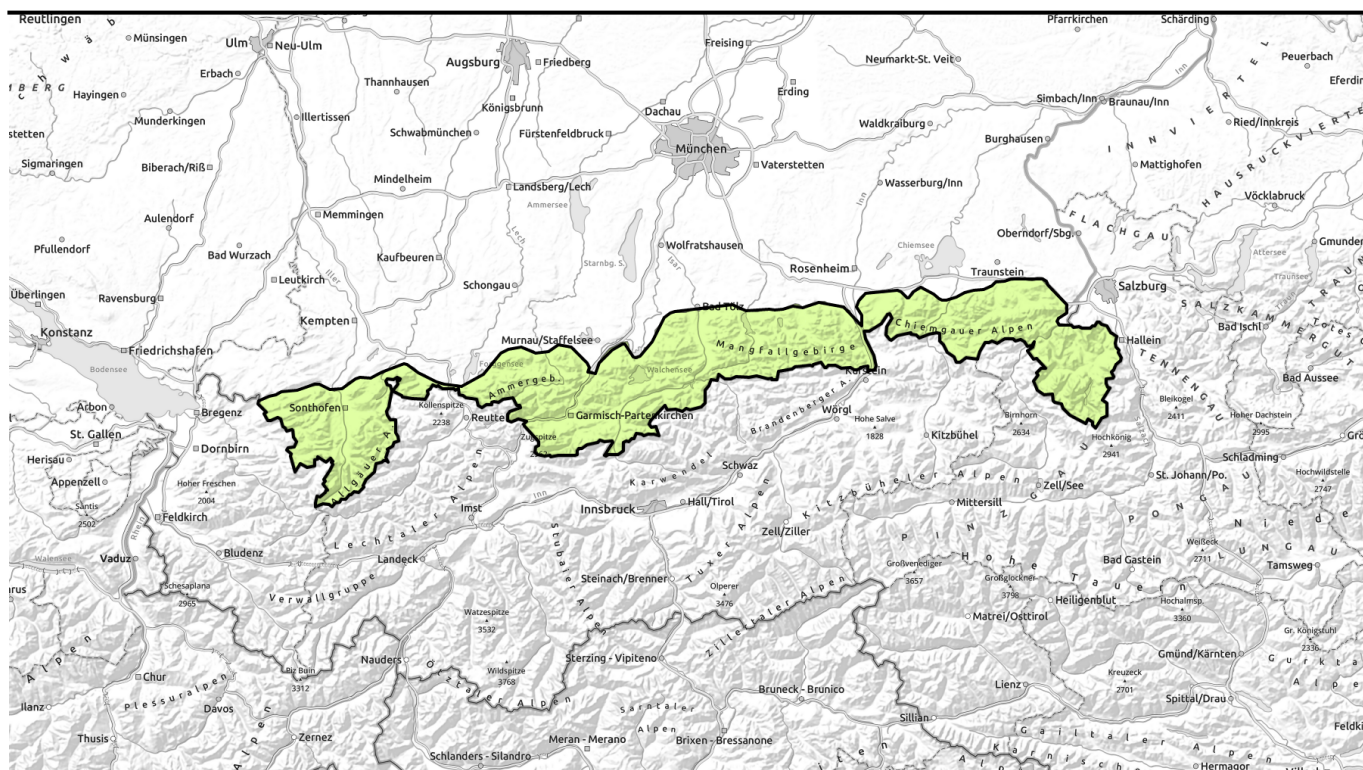




morning



Start and end backcountry tours early



Allgäuer Vorberge, Allgäuer Hauptkamm, Ammergauer Alpen, Werdenfeller Alpen, Bayerische Voralpen West, Chiemgauer Alpen West, Bayerische Voralpen Mitte, Bayerische Voralpen Ost, Chiemgauer Alpen Ost, Berchtesgadener Alpen



Avalanche problems



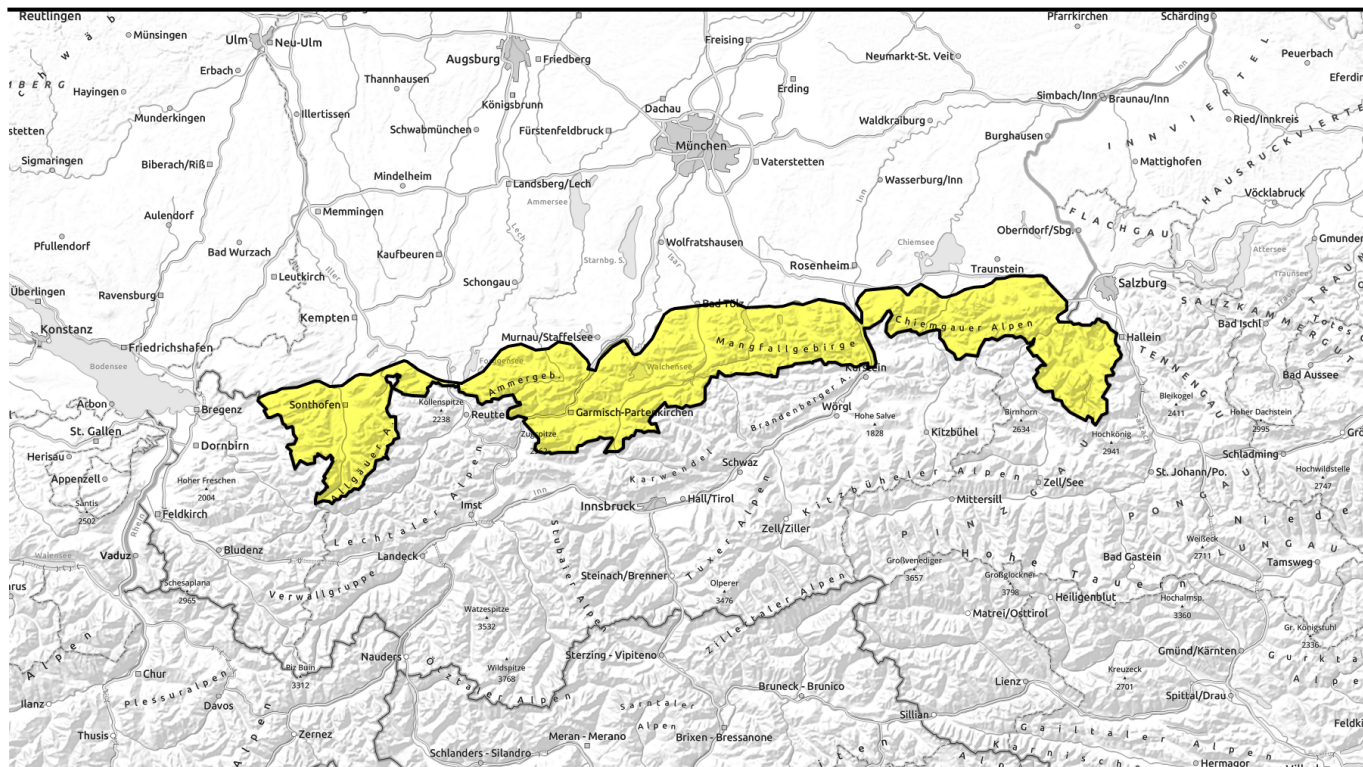
Danger ratings



Expositions



afternoon



Touren frühzeitig starten und beenden



Allgäuer Vorberge, Allgäuer Hauptkamm, Ammergauer Alpen, Werdenfelser Alpen, Bayerische Voralpen West, Chiemgauer Alpen West, Bayerische Voralpen Mitte, Bayerische Voralpen Ost, Chiemgauer Alpen Ost, Berchtesgadener Alpen



Avalanche problems



Danger ratings

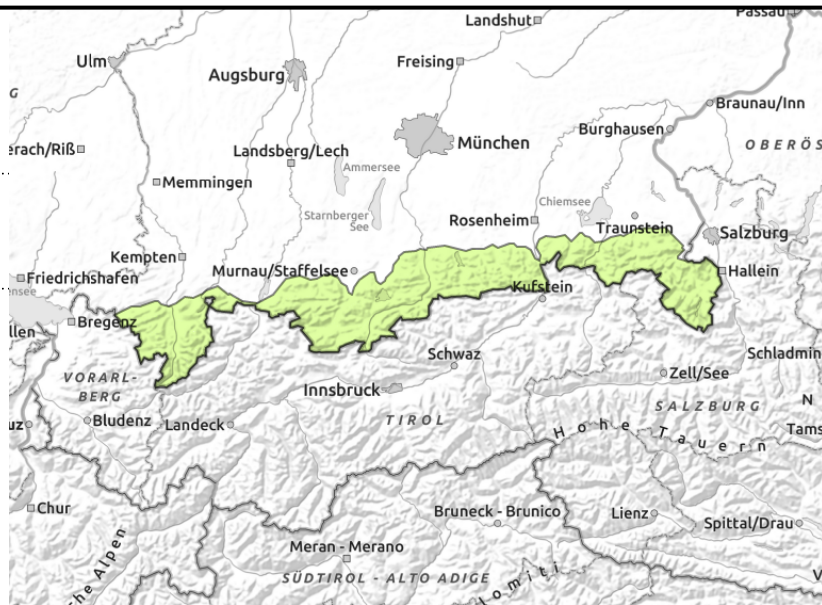
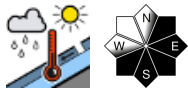


Expositions



morning

Allgäuer Vorberge, Allgäuer Hauptkamm, Ammergauer Alpen, Werdenfelser Alpen, Bayerische Voralpen West, Chiemgauer Alpen West, Bayerische Voralpen Mitte, Bayerische Voralpen Ost, Chiemgauer Alpen Ost, Berchtesgadener Alpen



Avoid zones below glide cracks

Avalanche danger rises from low to moderate during the course of the day. Main problem: wet snow. Many extremely steep rocky slopes have already discharged. Where there is still sufficient snow, esp. on the shady side and at high altitudes, it can trigger naturally as loose snow avalanches or be released by 1 skier. Wet-snow masses are often swept along on the plummet path. In addition, possibility of glide snow avalanches on steep grass-covered slopes and rock slabs with sufficient snow. Releases are mostly small, esp. at higher altitudes and later in the day they can grow to medium size.

Snowpack structure

In leeward high altitude terrain and under clear nocturnal skies the snowpack is melt-freeze encrusted in the morning. Elsewhere the snowpack is moist down to the ground and heavy. Due to solar radiation it forfeits further firmness during the course of the day. Where the water seeps down to and accumulates at the ground, gliding movements over smooth ground are promoted. Low-altitude south-facing slopes are becoming increasingly bare of snow.

Outlook

During the next few days wet snow avalanches and a daytime avalanche danger cycle can be expected.

Avalanche problems



Danger ratings

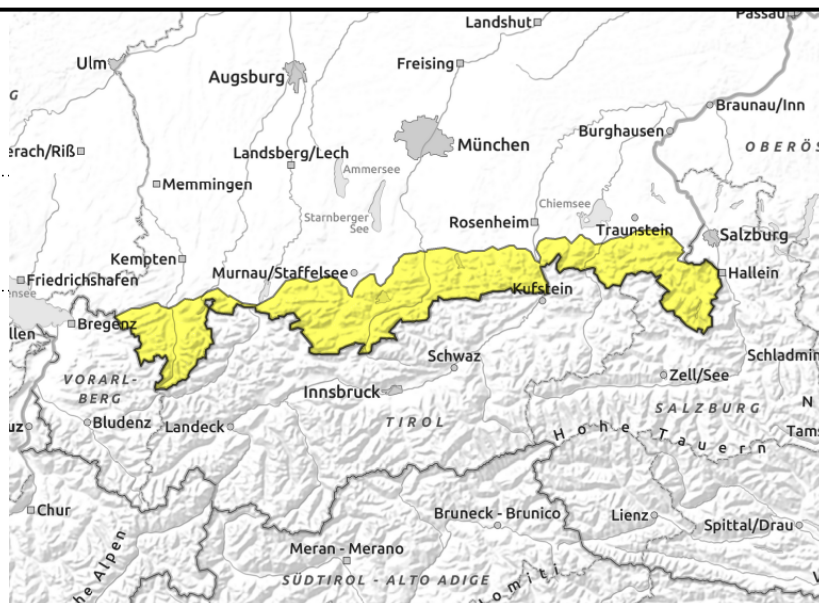
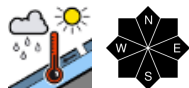


Expositions



afternoon

Allgäuer Vorberge, Allgäuer Hauptkamm, Ammergauer Alpen, Werdenfelser Alpen, Bayerische Voralpen West, Chiemgauer Alpen West, Bayerische Voralpen Mitte, Bayerische Voralpen Ost, Chiemgauer Alpen Ost, Berchtesgadener Alpen



Avoid zones below glide cracks

Avalanche danger rises from low to moderate during the course of the day. Main problem: wet snow. Many extremely steep rocky slopes have already discharged. Where there is still sufficient snow, esp. on the shady side and at high altitudes, it can trigger naturally as loose snow avalanches or be released by 1 skier. Wet-snow masses are often swept along on the plummet path. In addition, possibility of glide snow avalanches on steep grass-covered slopes and rock slabs with sufficient snow. Releases are mostly small, esp. at higher altitudes and later in the day they can grow to medium size.

Snowpack structure

In leeward high altitude terrain and under clear nocturnal skies the snowpack is melt-freeze encrusted in the morning. Elsewhere the snowpack is moist down to the ground and heavy. Due to solar radiation it forfeits further firmness during the course of the day. Where the water seeps down to and accumulates at the ground, gliding movements over smooth ground are promoted. Low-altitude south-facing slopes are becoming increasingly bare of snow.

Outlook

During the next few days wet snow avalanches and a daytime avalanche danger cycle can be expected.

Translated by Jeffrey McCabe, www.creativtrans.com

Avalanche problems



Danger ratings



Expositions

