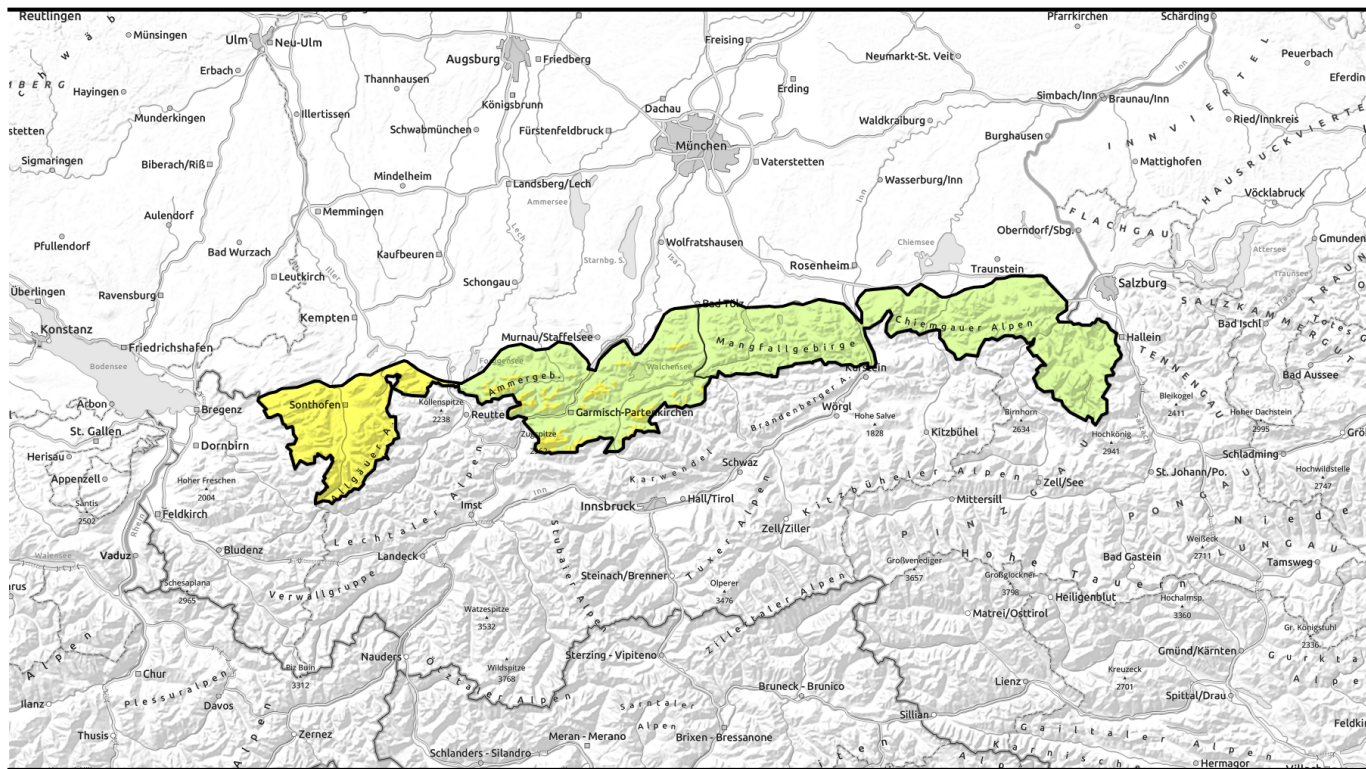

















# morning



## UPDATE: Wind intensifies!

	Allgäuer Vorberge, Allgäuer Hauptkamm	   
	Werdenfelser Alpen, Ammergauer Alpen, Bayerische Voralpen West forestline	   
	Bayerische Voralpen Mitte, Bayerische Voralpen Ost, Chiemgauer Alpen West, Chiemgauer Alpen Ost, Berchtesgadener Alpen	   

### Avalanche problems



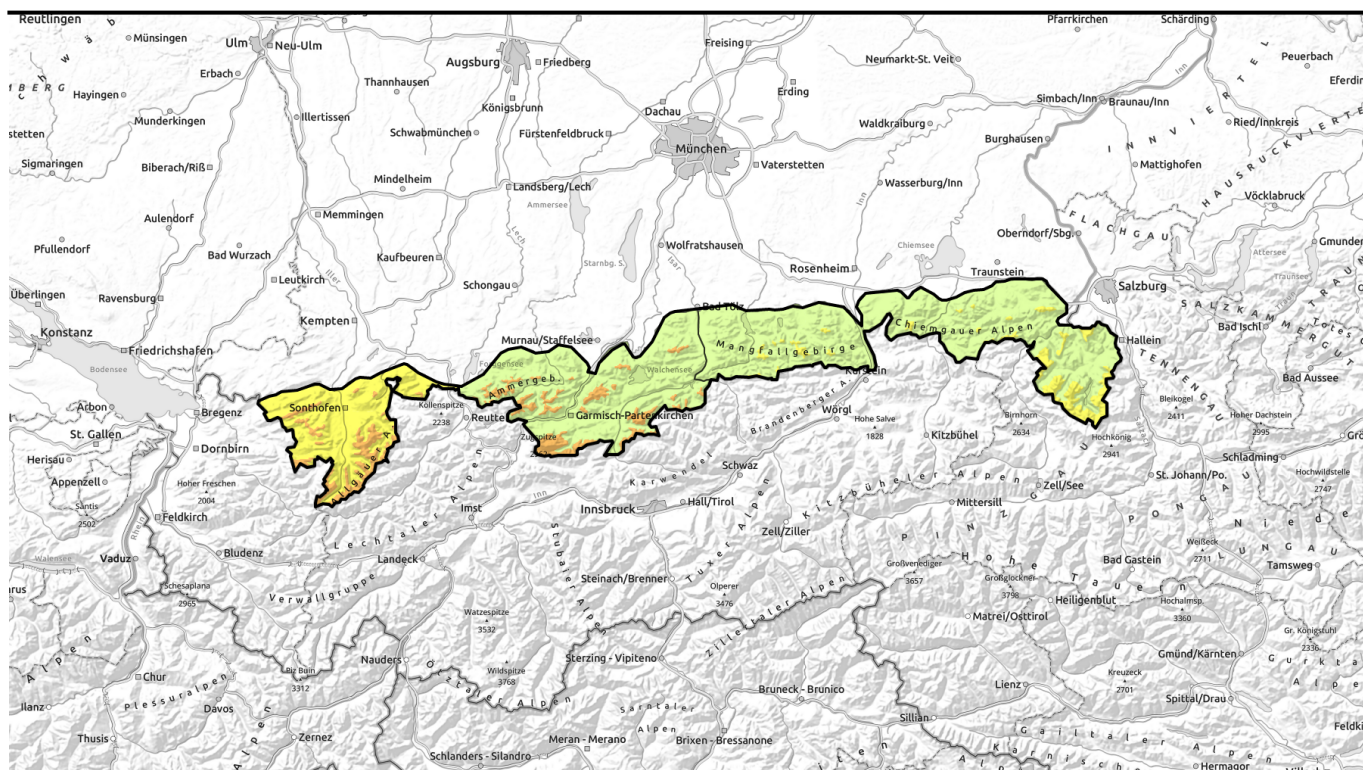
### Danger ratings









### Expositions


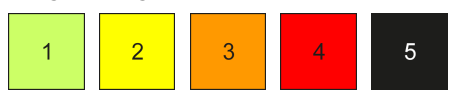



# afternoon



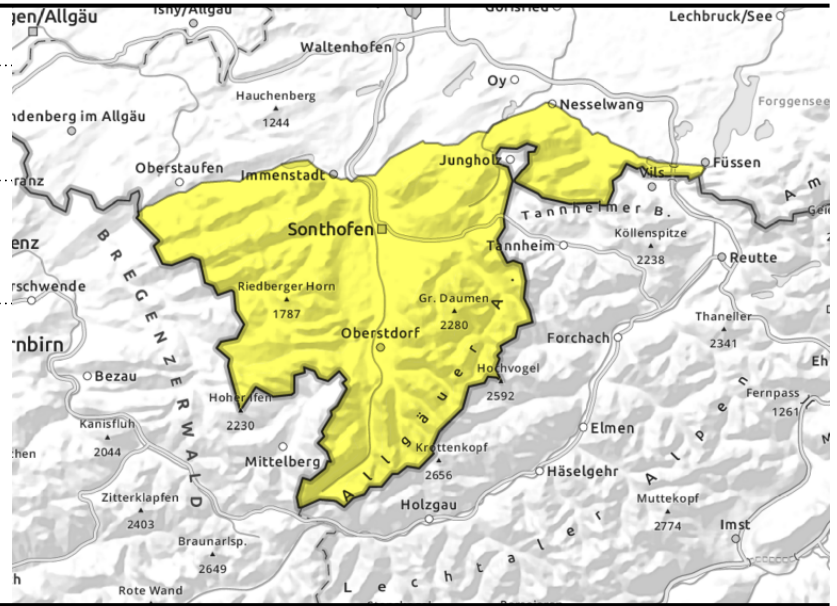
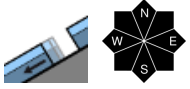
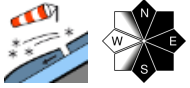
## AKTUALISIERUNG: Wind dreht auf!

	Allgäuer Vorberge, Allgäuer Hauptkamm	
forestline		
	Werdenfelser Alpen, Ammergauer Alpen, Bayerische Voralpen West	
forestline		
	Bayerische Voralpen Mitte, Bayerische Voralpen Ost, Chiemgauer Alpen West, Chiemgauer Alpen Ost, Berchtesgadener Alpen	
forestline		

<b>Avalanche problems</b> 	<b>Danger ratings</b> 	<b>Expositions</b> 
------------------------------------------------------------------------------------------------------------------	---------------------------------------------------------------------------------------------------------------	-------------------------------------------------------------------------------------------------------------

## morning

### Allgäuer Vorberge, Allgäuer Hauptkamm



### Caution: fresh snowdrifts!

Avalanche danger is moderate (danger level 2), above the treeline it increases to considerable as the day progresses. Fresh snowdrifts are the main problem. On steep ridgeline slopes ( $>30^\circ$ ) in N/E/S aspects as well as in wind-loaded gullies and bowls snowdrifts can be triggered by 1 person. Frequency and size of avalanche prone locations increase with ascending altitude during the course of the day. Avalanches can reach medium size.

At intermediate altitudes glide snow avalanches can in addition release naturally, in particular on steep grassy slopes that have previously been bare of snow. Glide snow avalanches can attain medium size.

### Snowpack structure

On Friday the snow of the last few days will be transported when westerly winds set in. In particular at higher altitudes the snow is still powdery; snowdrifts will accumulate that are partly extensive. Weak intermediate layers that formed while precipitations paused and graupel layers can make the snowpack structure unstable. At intermediate altitudes the snow of the last few days has already settled considerably and is becoming increasingly moist and heavy. The snowpack base is wet. Gliding movements of snow masses over smooth ground are the consequence.

### Outlook

Precipitations are forecast, avalanche situation will therefore remain tense.

#### Avalanche problems



#### Danger ratings

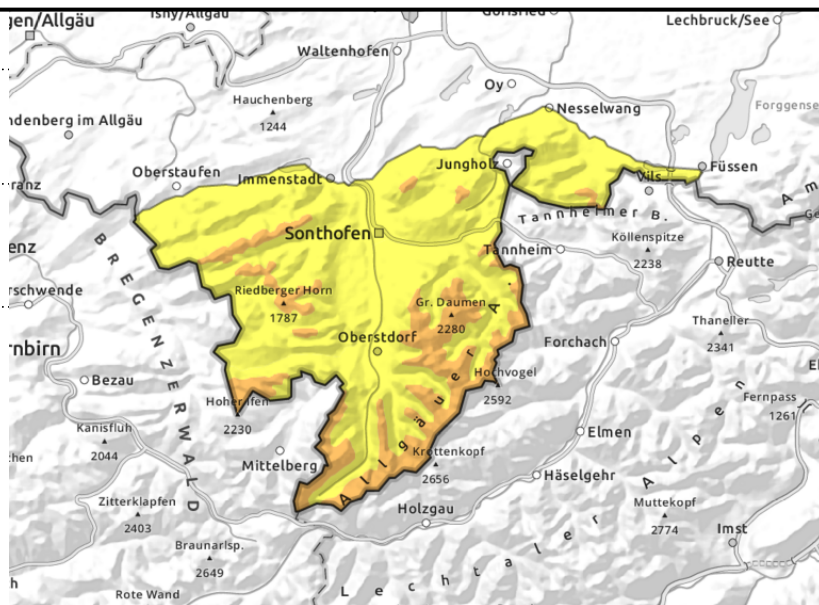
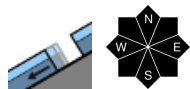
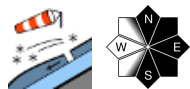


#### Expositions



## afternoon

### Allgäuer Vorberge, Allgäuer Hauptkamm



### Caution: fresh snowdrifts!

Avalanche danger is moderate (danger level 2), above the treeline it increases to considerable as the day progresses. Fresh snowdrifts are the main problem. On steep ridgeline slopes ( $>30^\circ$ ) in N/E/S aspects as well as in wind-loaded gullies and bowls snowdrifts can be triggered by 1 person. Frequency and size of avalanche prone locations increase with ascending altitude during the course of the day. Avalanches can reach medium size.

At intermediate altitudes glide snow avalanches can in addition release naturally, in particular on steep grassy slopes that have previously been bare of snow. Glide snow avalanches can attain medium size.

### Snowpack structure

On Friday the snow of the last few days will be transported when westerly winds set in. In particular at higher altitudes the snow is still powdery; snowdrifts will accumulate that are partly extensive. Weak intermediate layers that formed while precipitations paused and graupel layers can make the snowpack structure unstable. At intermediate altitudes the snow of the last few days has already settled considerably and is becoming increasingly moist and heavy. The snowpack base is wet. Gliding movements of snow masses over smooth ground are the consequence.

### Outlook

Precipitations are forecast, avalanche situation will therefore remain tense.

#### Avalanche problems



#### Danger ratings



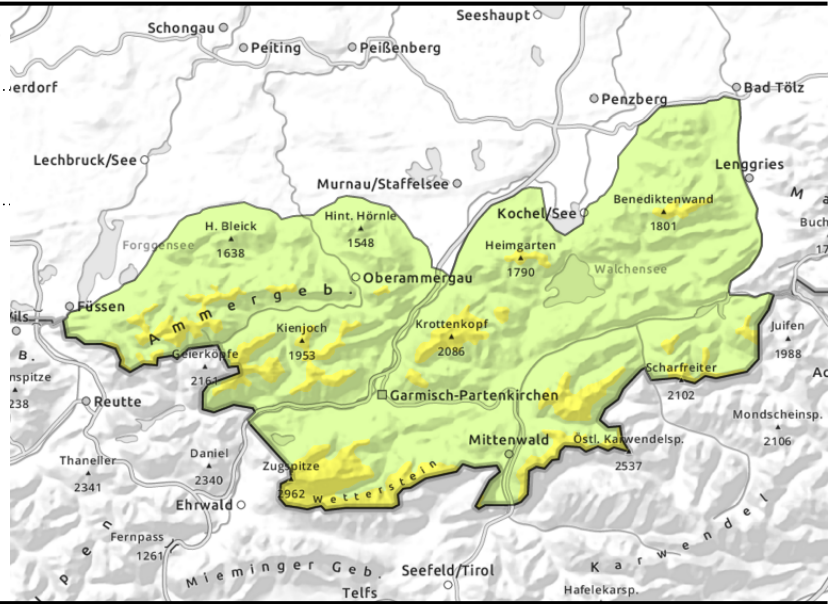
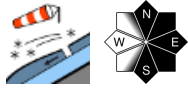
#### Expositions





## morning

### Werdenfelser Alpen, Ammergauer Alpen, Bayerische Voralpen West



### Fresh snowdrifts during the course of the day

Above the treeline avalanche danger rises to considerable during the course of the day, below the treeline it is low. Fresh snowdrifts are the main problem. In steep ridgeline terrain on N/E/SW facing slopes and in wind-loaded gullies and bowls small slab avalanches can be triggered by minimal additional loading. The number of avalanche prone locations increases as the day progresses; slab avalanches can reach medium size.

In addition it can be expected that small moist loose snow avalanches trigger naturally in steep rocky terrain ( $>40^\circ$ ).

### Snowpack structure

On Friday the snow of the last few days will be transported when westerly winds set in. At higher altitudes the snow is still powdery; extensive snowdrifts will accumulate. Weak intermediate layers that formed while precipitations paused and graupel layers can here make the snowpack structure unstable. At intermediate altitudes the snow of the last few days has already settled considerably and is becoming increasingly moist and heavy. The snowpack base is wet. Gliding movements over smooth ground cannot be excluded where the snow cover is sufficient.

### Outlook

Due to heavy precipitations the avalanche danger remains tense.

#### Avalanche problems



#### Danger ratings



#### Expositions

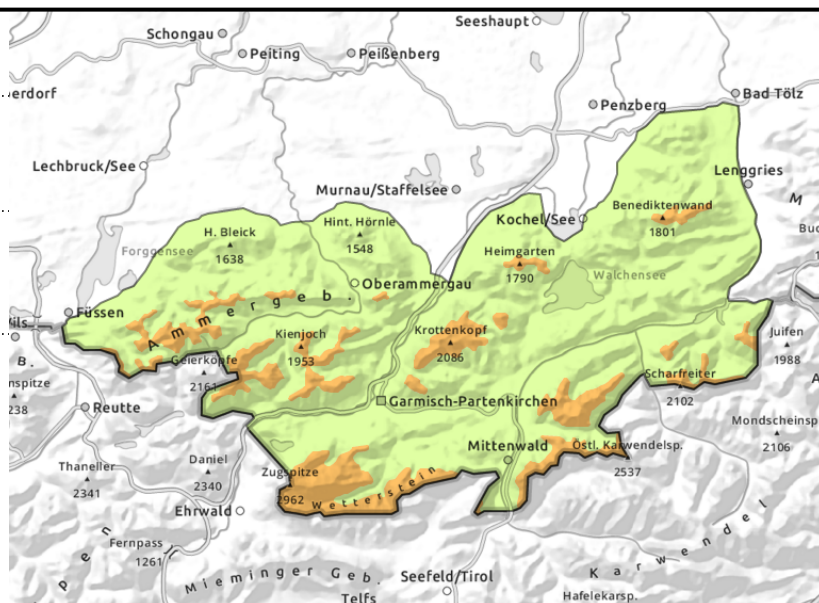
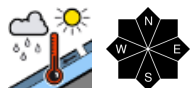
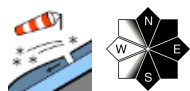


## afternoon

### Werdenfelser Alpen, Ammergauer Alpen, Bayerische Voralpen West



forestline



### Fresh snowdrifts during the course of the day

Above the treeline avalanche danger rises to considerable during the course of the day, below the treeline it is low. Fresh snowdrifts are the main problem. In steep ridgeline terrain on N/E/SW facing slopes and in wind-loaded gullies and bowls small slab avalanches can be triggered by minimal additional loading. The number of avalanche prone locations increases as the day progresses; slab avalanches can reach medium size.

In addition it can be expected that small moist loose snow avalanches trigger naturally in steep rocky terrain ( $>40^\circ$ ).

### Snowpack structure

On Friday the snow of the last few days will be transported when westerly winds set in. At higher altitudes the snow is still powdery; extensive snowdrifts will accumulate. Weak intermediate layers that formed while precipitations paused and graupel layers can here make the snowpack structure unstable. At intermediate altitudes the snow of the last few days has already settled considerably and is becoming increasingly moist and heavy. The snowpack base is wet. Gliding movements over smooth ground cannot be excluded where the snow cover is sufficient.

### Outlook

Due to heavy precipitations the avalanche danger remains tense.

#### Avalanche problems



#### Danger ratings

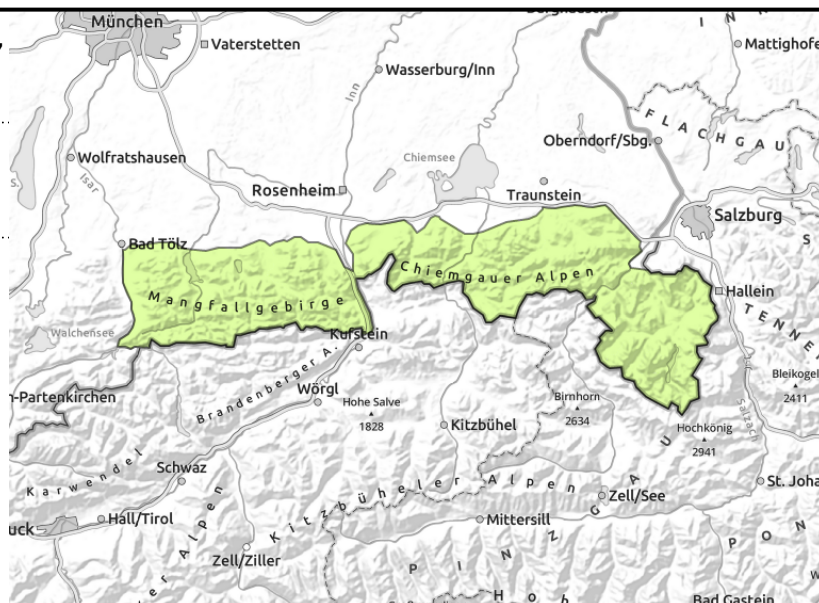
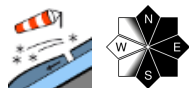


#### Expositions



## morning

**Bayerische Voralpen Mitte, Bayerische Voralpen Ost, Chiemgauer Alpen West, Chiemgauer Alpen Ost, Berchtesgadener Alpen**



## Avoid areas below rock faces!

Above the treeline, avalanche danger rises to moderate during the course of the day. Snowdrifts will become a problem. Avalanche prone locations occur in east aspects adjacent to ridgelines. Here, minimal additional loading by 1 skier can trigger slabs in gullies and bowls. Slabs are mostly small. Beware danger of falling.

In addition, small moist and wet loose snow avalanches can release in steep rocky terrain during the course of the day. On steep smooth grass-covered slopes isolated wet glide snow avalanches cannot be excluded.

## Snowpack structure

On Friday, the snow of the last few days will become increasingly moist and heavy at intermediate altitudes. The snowpack base is wet. Where there is sufficient snow, gliding movements of snow masses over smooth ground are possible. Intensifying westerly winds will generate fresh snowdrift accumulations during the course of the day. Locally, graupel layers that are prone to triggering are embedded in the new snow masses.

## Outlook

Due to heavy precipitations avalanche danger will rise on the weekend.

### Avalanche problems



### Danger ratings

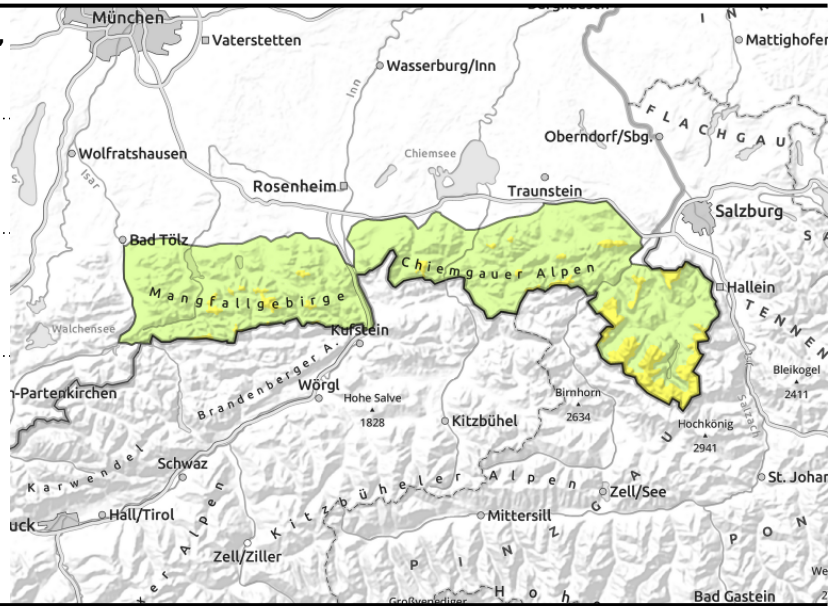
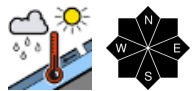
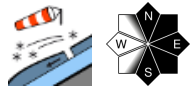


### Expositions



## afternoon

**Bayerische Voralpen Mitte, Bayerische Voralpen Ost, Chiemgauer Alpen West, Chiemgauer Alpen Ost, Berchtesgadener Alpen**



## Avoid areas below rock faces!

Above the treeline, avalanche danger rises to moderate during the course of the day. Snowdrifts will become a problem. Avalanche prone locations occur in east aspects adjacent to ridgelines. Here, minimal additional loading by 1 skier can trigger slabs in gullies and bowls. Slabs are mostly small. Beware danger of falling.

In addition, small moist and wet loose snow avalanches can release in steep rocky terrain during the course of the day. On steep smooth grass-covered slopes isolated wet glide snow avalanches cannot be excluded.

## Snowpack structure

On Friday, the snow of the last few days will become increasingly moist and heavy at intermediate altitudes. The snowpack base is wet. Where there is sufficient snow, gliding movements of snow masses over smooth ground are possible. Intensifying westerly winds will generate fresh snowdrift accumulations during the course of the day. Locally, graupel layers that are prone to triggering are embedded in the new snow masses.

## Outlook

Due to heavy precipitations avalanche danger will rise on the weekend.

Translated by Jeffrey McCabe, [www.creativtrans.com](http://www.creativtrans.com)

### Avalanche problems



### Danger ratings



### Expositions

