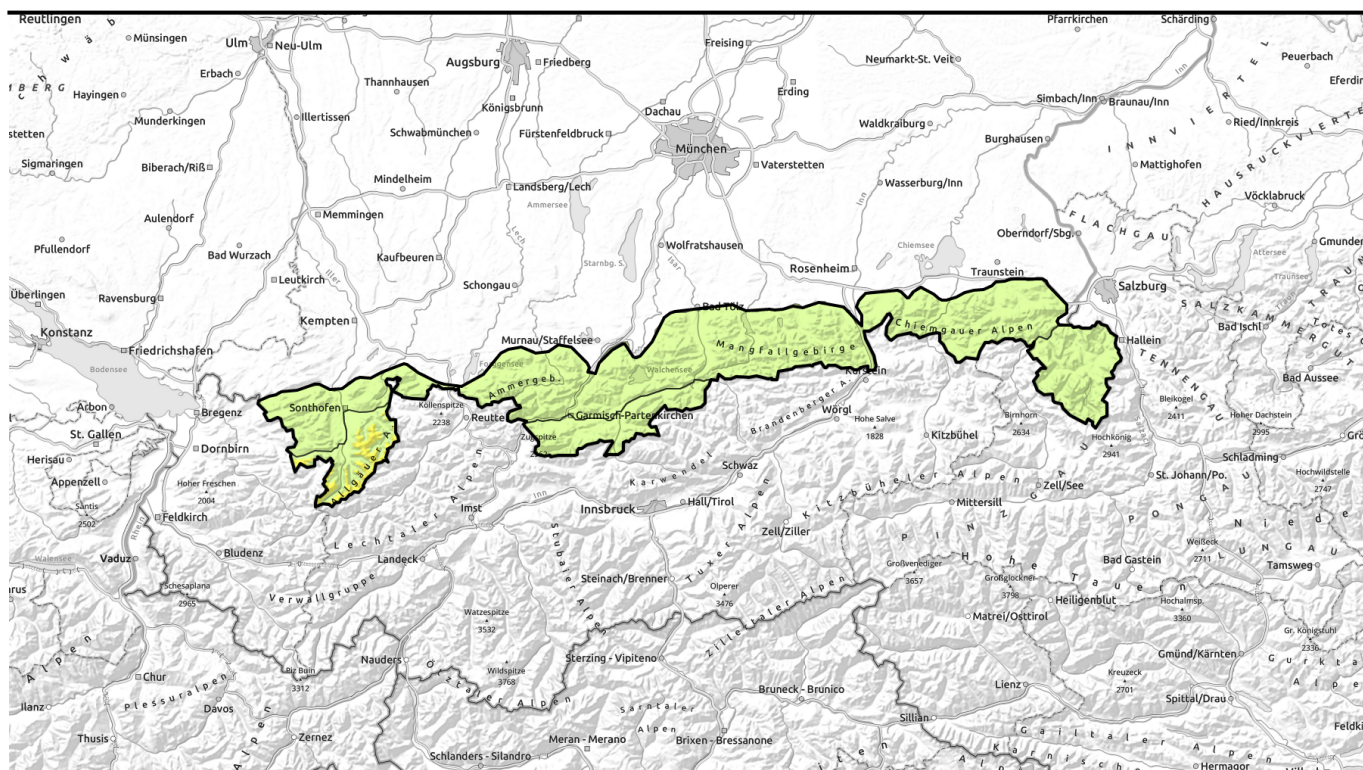




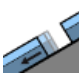






morning



Wet-snow problem also for hikers: beware releases from above!

	Ammergauer Alpen, Allgäuer Vorberge, Bayerische Voralpen West, Bayerische Voralpen Mitte, Bayerische Voralpen Ost, Chiemgauer Alpen West, Chiemgauer Alpen Ost		
	1600 m Allgäuer Hauptkamm		
	Berchtesgadener Alpen, Werdenfelser Alpen		

Avalanche problems



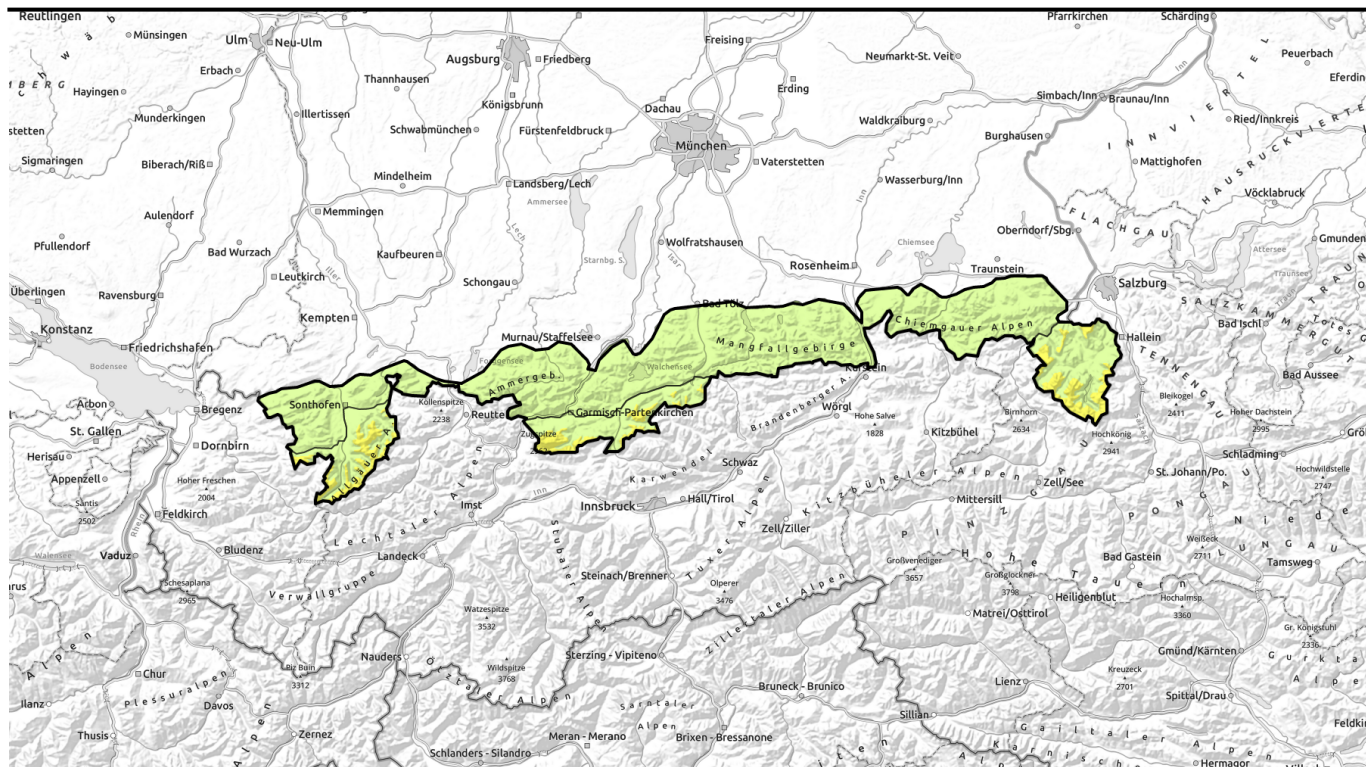
Danger ratings









Expositions



afternoon



Nassschneeproblem: auch beim Wandern auf Selbstaumlösungen von oberhalb achten!

	Ammergauer Alpen, Allgäuer Vorberge, Bayerische Voralpen West, Bayerische Voralpen Mitte, Bayerische Voralpen Ost, Chiemgauer Alpen West, Chiemgauer Alpen Ost	
	Allgäuer Hauptkamm	
1600 m		
	Berchtesgadener Alpen, Werdenfelser Alpen	
1600 m		

Avalanche problems



Danger ratings

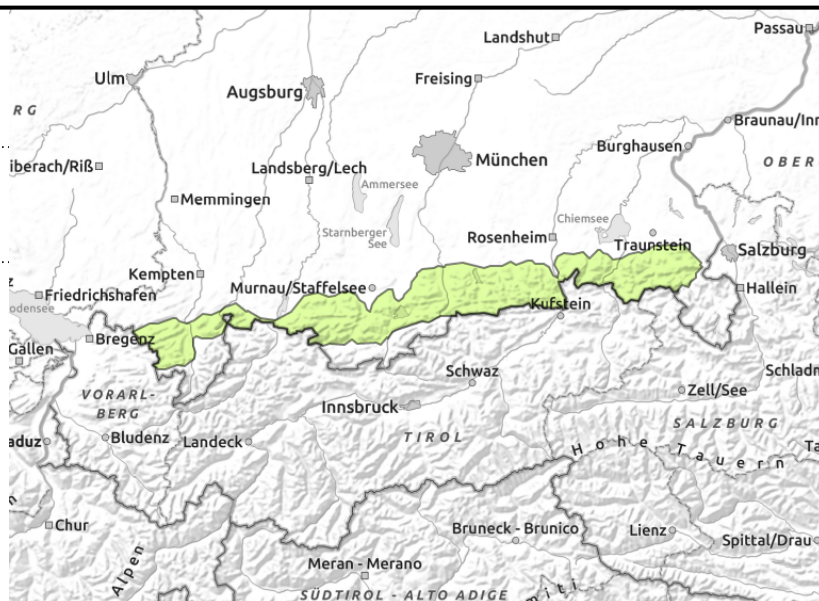
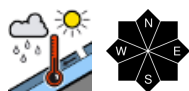


Expositions



morning

Ammergauer Alpen, Allgäuer Vorberge, Bayerische Voralpen West, Bayerische Voralpen Mitte, Bayerische Voralpen Ost, Chiemgauer Alpen West, Chiemgauer Alpen Ost



On sunny slopes small wet loose-snow avalanches can release

Avalanche danger is low. Wet snow is the main problem. Due to solar radiation, small wet loose-snow avalanches can release on very steep slopes naturally. On very steep smooth slopes, esp. on shady slopes, small wet glide-snow avalanches are possible.

Snowpack structure

During nights of clear skies a melt-freeze crust forms, quickly melts in the daytime. Where the snowfall from Wednesday fell on a cohesive snowpack surface, it is now utterly wet- On southerly slopes and shady slopes, the ground is bare up to 1600 m.

Outlook

Avalanche danger levels are not expected to change significantly.

Avalanche problems



Danger ratings

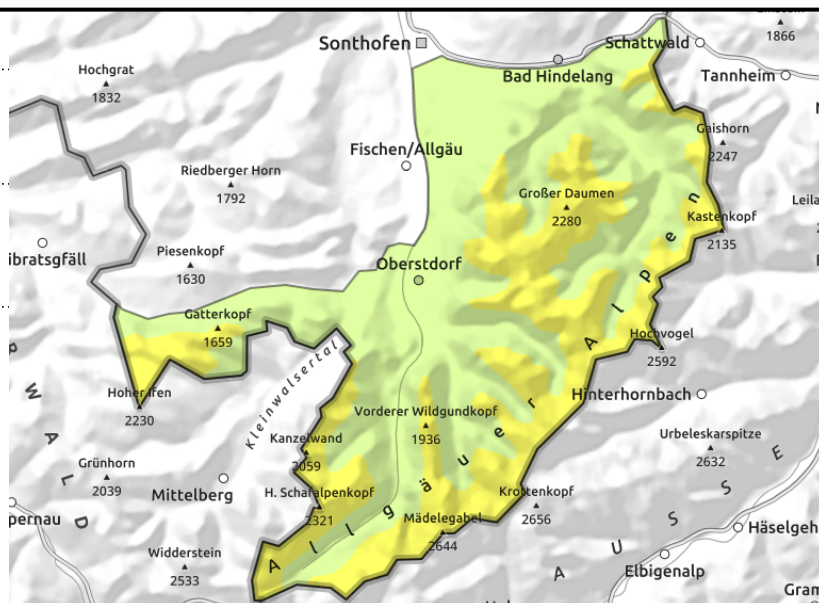
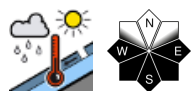


Expositions



morning

Allgäuer Hauptkamm



Avoid snowdrifts and zones below glide cracks.

Avalanche danger above 1600 m is moderate, below that altitude danger is low. Main problem: wet snow. On very steep grass-covered slopes and rocks, wet glide-snow avalanches can release naturally. Large releases are sometimes possible.

Due to solar radiation, small wet loose-snow avalanches can release in extremely steep terrain.

Snowpack structure

During nights of clear skies a melt-freeze crust forms, quickly melts in the daytime. Where the snowfall from Wednesday fell on a cohesive snowpack surface, it is now utterly wet- On southerly slopes and shady slopes, the ground is bare up to 1600 m.

Outlook

Avalanche danger levels are not expected to change significantly.

Avalanche problems



Danger ratings

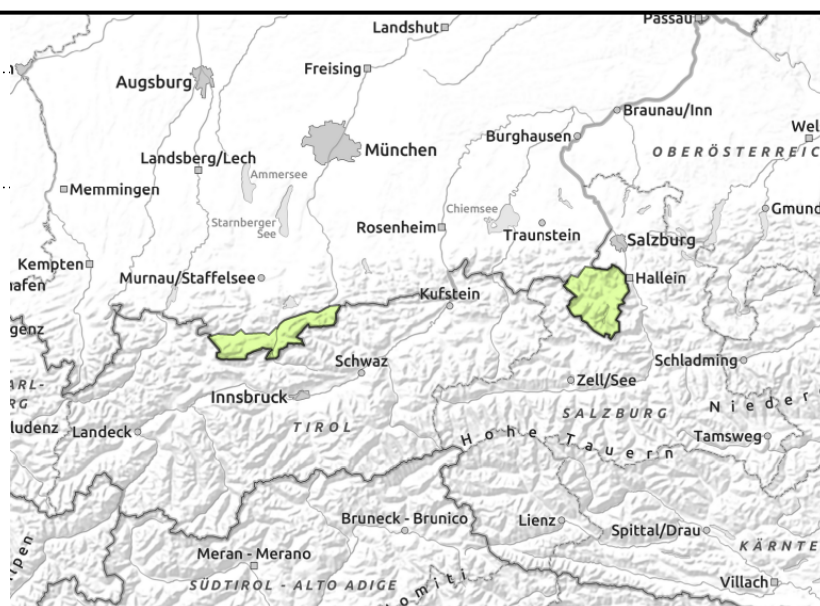
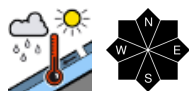


Expositions



morning

Berchtesgadener Alpen, Werdenfelser Alpen



Increasingly frequent naturally triggered wet-snow avalanches during the daytime

Avalanche danger is low in the morning, and rises to moderate above 1600 m during the course of the day. Main problem: wet snow. On very steep grass-covered slopes and rocks, wet glide-snow avalanches can release naturally. Large releases are sometimes possible.

Snowpack structure

During nights of clear skies a melt-freeze crust forms, quickly melts in the daytime. Where the snowfall from Wednesday fell on a cohesive snowpack surface, it is now utterly wet- On southerly slopes and shady slopes, the ground is bare up to 1600 m.

Outlook

Avalanche danger levels are not expected to change significantly.

Avalanche problems



Danger ratings

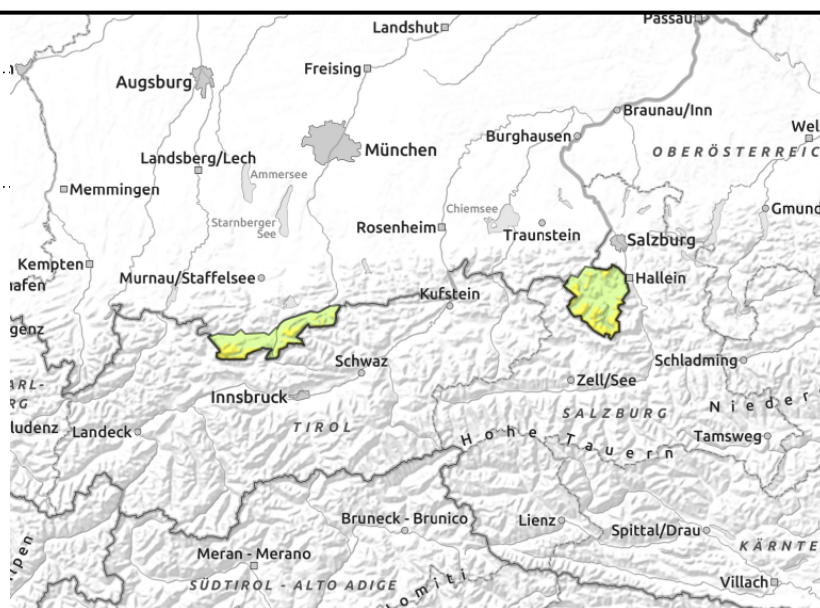
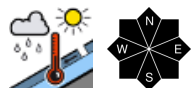


Expositions



afternoon

Berchtesgadener Alpen, Werdenfelser Alpen



Increasingly frequent naturally triggered wet-snow avalanches during the daytime

Avalanche danger is low in the morning, and rises to moderate above 1600 m during the course of the day. Main problem: wet snow. On very steep grass-covered slopes and rocks, wet glide-snow avalanches can release naturally. Large releases are sometimes possible.

Snowpack structure

During nights of clear skies a melt-freeze crust forms, quickly melts in the daytime. Where the snowfall from Wednesday fell on a cohesive snowpack surface, it is now utterly wet- On southerly slopes and shady slopes, the ground is bare up to 1600 m.

Outlook

Avalanche danger levels are not expected to change significantly.

Translated by Jeffrey McCabe, www.creativtrans.com

Avalanche problems



Danger ratings



Expositions

