







Snowdrift accumulations trigger-prone, esp. at high altitudes

	2 1 forestline Berchtesgadener Alpen, Werdenfelser Alpen, Ammergauer Alpen, Bayerische Voralpen West, Allgäuer Vorberge	
	3 2 2000 m Allgäuer Hauptkamm	
	1 Bayerische Voralpen Mitte, Bayerische Voralpen Ost, Chiemgauer Alpen West, Chiemgauer Alpen Ost	

Avalanche problems



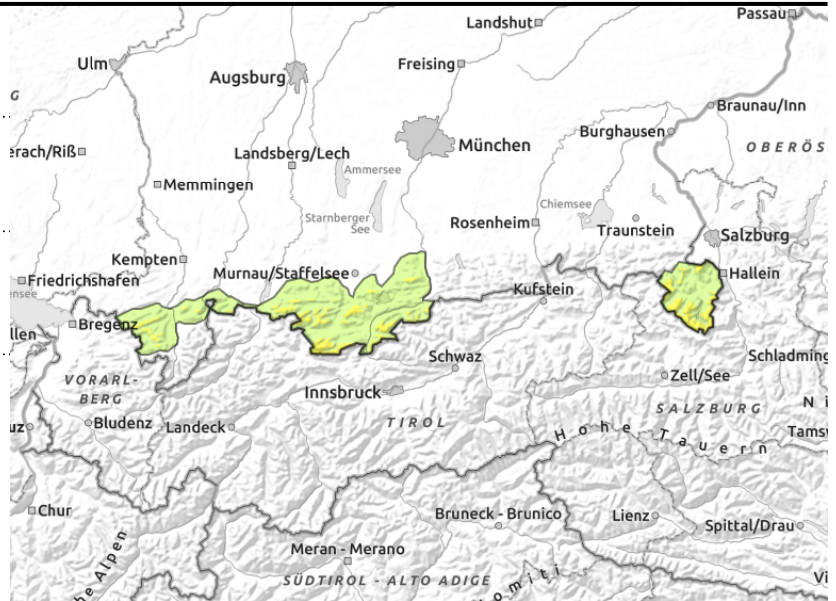
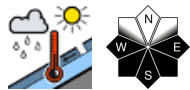
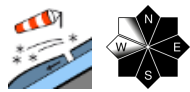
Danger ratings



Expositions



Berchtesgadener Alpen, Werdenfelser Alpen, Ammergauer Alpen, Bayerische Voralpen West, Allgäuer Vorberge



Small loose-snow avalanches trigger naturally due to sunshine

Avalanche danger above the treeline is moderate, below that altitude danger is low. Main problem: snowdrifts. Danger zones occur in steep ridgeline terrain on N/E/SW facing slopes, behind discontinuities in the terrain and in wind-loaded gullies and bowls, releases small-to-medium sized. Slabs can be triggered by 1 person, e.g. a skier.

Solar radiation triggering mostly small loose-snow avalanches in steep rocky terrain naturally, possibly medium sized in regions such as Werdenfels where recent snowfall has been heavy. In isolated cases small glide-snow avalanches are possible on steep grass-covered slopes.

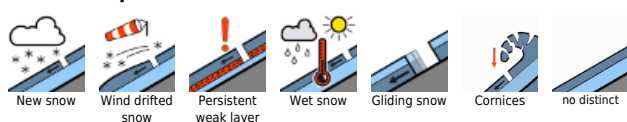
Snowpack structure

Stormy westerly winds have transported the fresh snow and generated new snowdrift accumulations. Inside the drifts are trigger-prone layers. In transitions to the old snowpack at high altitudes a weak faceted layer has formed at high altitudes due to low temperatures. The proneness to triggering increases with ascending altitude. Beneath a melt-freeze crust in the uppermost part of the snowpack is a wet layer which can be triggered in some areas. Elsewhere the old snowpack is compact and stable; thoroughly moist and wet down to the ground. Also the fresh fallen snow will moisten through warmth and solar radiation on Monday, forfeiting its bonding, possibly triggering as loose snow.

Outlook

Persistent warmth on Tuesday will further consolidate the snowdrifts, danger will recede somewhat.

Avalanche problems



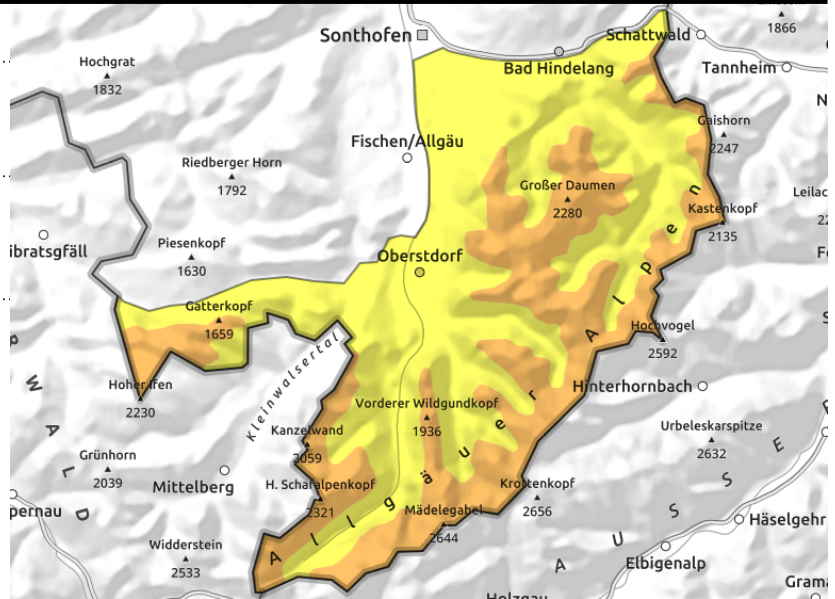
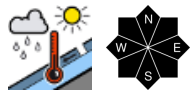
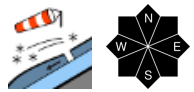
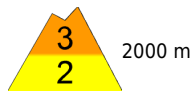
Danger ratings



Expositions



Allgäuer Hauptkamm



Beware snowdrifts behind discontinuities in the terrain, also distant from ridges

Avalanche danger above 2000 m is considerable, below that altitude danger is moderate. Main problem: snowdrift accumulations. Danger zones occur in steep ridgeline terrain on N/E/SW facing slopes, behind discontinuities in the terrain and in wind-loaded gullies and bowls, releases small-to-medium sized. Slabs can be triggered by 1 person, e.g. a skier.

In isolated cases small glide-snow avalanches are possible on steep grass-covered slopes, releases can be large.

Solar radiation triggering moistly small loose-snow avalanches in steep rocky terrain naturally.

Snowpack structure

Stormy westerly winds have transported the fresh snow and generated new snowdrift accumulations. Inside the drifts are trigger-prone layers. In transitions to the old snowpack at high altitudes a weak faceted layer has formed at high altitudes due to low temperatures. The proneness to triggering increases with ascending altitude. Beneath a melt-freeze crust in the uppermost part of the snowpack is a wet layer which can be triggered in some areas. Elsewhere the old snowpack is compact and stable; thoroughly moist and wet down to the ground. Also the fresh fallen snow will moisten through warmth and solar radiation on Monday, forfeiting its bonding, possibly triggering as loose snow.

Outlook

Persistent warmth on Tuesday will further consolidate the snowdrifts, danger will recede somewhat.

Avalanche problems



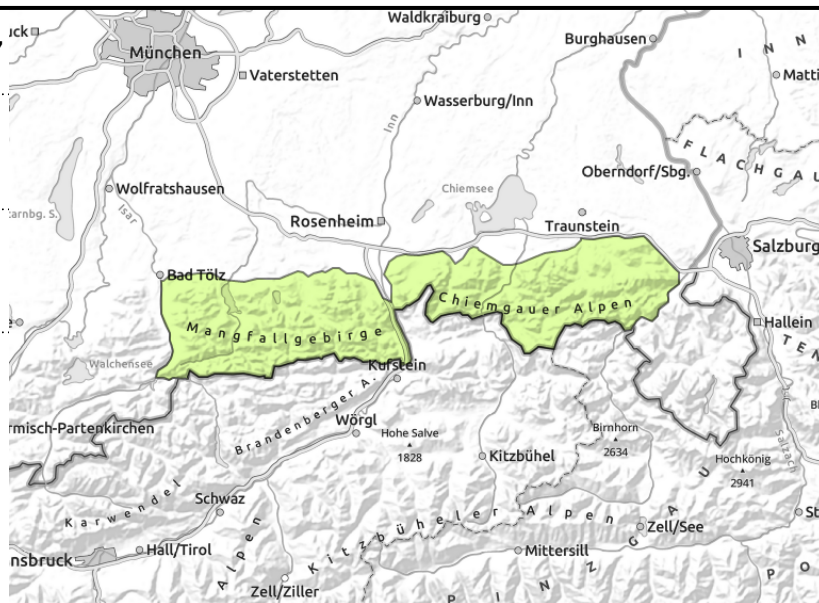
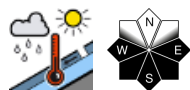
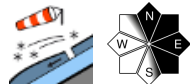
Danger ratings



Expositions



Bayerische Voralpen Mitte, Bayerische Voralpen Ost, Chiemgauer Alpen West, Chiemgauer Alpen Ost



Beware dangers of taking a fall in case of small avalanche releases

Avalanche danger is low. Main problem: small snowdrifts. Danger zones occur in steep ridgeline terrain on N/E/SE facing slopes, behind discontinuities in the terrain and in wind-loaded gullies and bowls, releases small-to-medium sized. Slabs can be triggered by 1 person, e.g. a skier. Solar radiation triggering moistly small loose-snow avalanches in steep rocky terrain naturally. In isolated cases small glide-snow avalanches are possible on steep grass-covered slopes, releases can be large.

Snowpack structure

Stormy westerly winds have transported the fresh snow and generated new snowdrift accumulations. Inside the drifts are trigger-prone layers. In transitions to the old snowpack at high altitudes a weak faceted layer has formed at high altitudes due to low temperatures. The proneness to triggering increases with ascending altitude. Beneath a melt-freeze crust in the uppermost part of the snowpack is a wet layer which can be triggered in some areas. Elsewhere the old snowpack is compact and stable; thoroughly moist and wet down to the ground. Also the fresh fallen snow will moisten through warmth and solar radiation on Monday, forfeiting its bonding, possibly triggering as loose snow.

Outlook

Avalanche danger levels are not expected to change significantly.

Translated by Jeffrey McCabe, www.creativtrans.com

Avalanche problems



Danger ratings



Expositions

