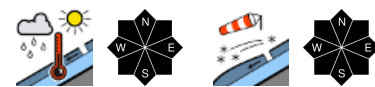


## Wet snow problem



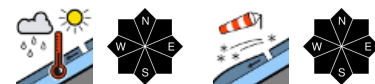
1500 m

Werdenföcher Alpen, Berchtesgaderer Alpen, Allgäuer Vorberge,  
 Ammergauer Alpen, Bayerische Voralpen West, Bayerische Voralpen Mitte,  
 Bayerische Voralpen Ost, Chiemgauer Alpen West, Chiemgauer Alpen Ost



1500 m

Allgäuer Hauptkamm



### Avalanche problems



### Danger ratings

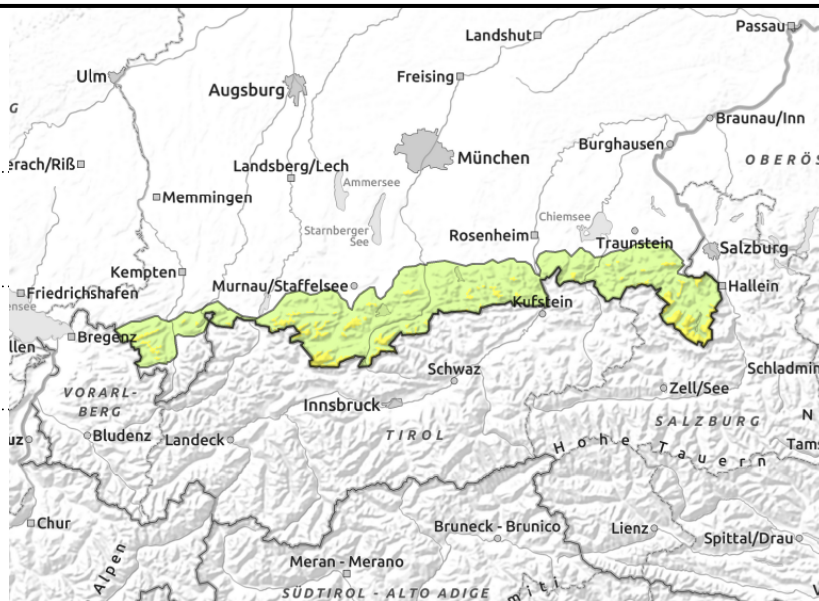
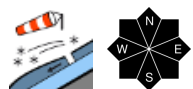
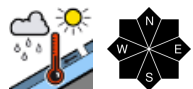


### Expositions





**Werdenfeller Alpen, Berchtesgadener Alpen, Allgäuer Vorberge, Ammergauer Alpen, Bayerische Voralpen West, Bayerische Voralpen Mitte, Bayerische Voralpen Ost, Chiemgauer Alpen West, Chiemgauer Alpen Ost**



## Danger of falling because of small slabs in exposed steep summit terrain

Avalanche danger above 1500 m is moderate, below that altitude danger is low. Main problem: wet snow. On very steep slopes with smooth ground that have not yet discharged glide snow avalanches can be expected to trigger naturally at any time. Avoid zones below glide cracks. In extremely steep terrain, wet and moist loose snow avalanches will release in addition on the sunny side. At higher altitudes wet avalanches can grow to medium-size.

In addition beware snowdrifts at highest altitudes. Danger zones occur on steep ridgeline slopes, behind discontinuities and in wind-loaded gullies and bowls in all aspects. Isolated small slab avalanches can be triggered by minimal additional loading.

### Snowpack structure

In many places a thin nocturnal melt-freeze crust forms. Even above 2000 m the snowpack is completely moist and wet at ground level. Moistening progresses as a result of mild temperatures. Higher up, fresh and somewhat older snowdrift accumulations were in places deposited atop soft layers or graupel and are prone to triggering. There is barely any snow below 1500 m, even in north-facing terrain.

### Outlook

The wet snow problem will persist also on Thursday due to showery rainfall up to an altitude of almost 2000 m.

#### Avalanche problems



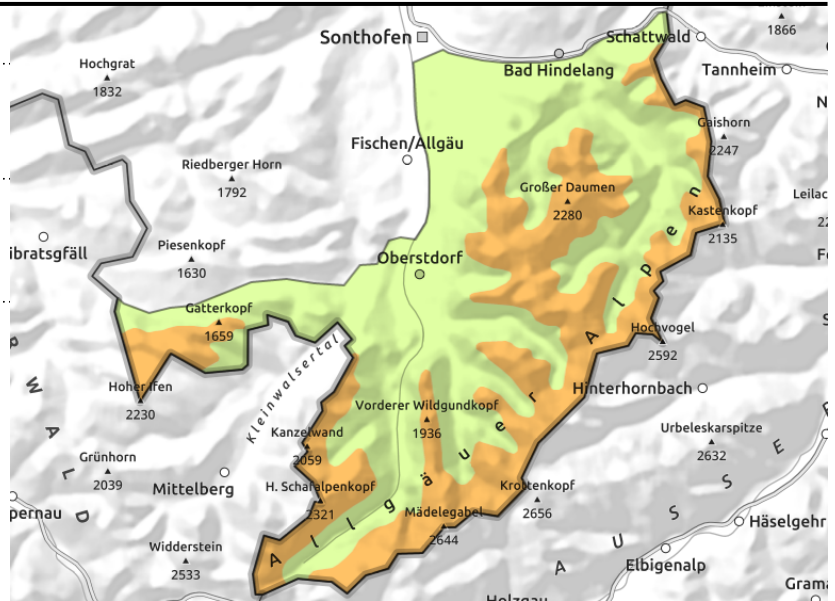
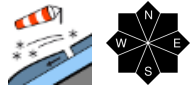
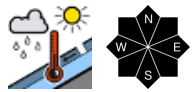
#### Danger ratings



#### Expositions



**Allgäuer Hauptkamm**



**Gliding snow activity in Allgäu is high!**

Avalanche danger above 1500 m is considerable, danger below that altitude is low. Main problem: wet snow. On very steep slopes with smooth ground glide snow avalanches can be expected at anytime. In isolated cases they can grow to large size. Avoid zones below glide cracks. In extremely steep terrain, small and medium-sized wet loose snow avalanches will release in addition, in particular on the sunny side.

In addition beware snowdrifts at highest altitudes. Danger zones occur on steep ridgeline slopes, behind discontinuities and in wind-loaded gullies and bowls in all aspects. Isolated small slab avalanches can be triggered by minimal additional loading.

**Snowpack structure**

In many places a thin nocturnal melt-freeze crust forms. Even above 2000 m the snowpack is completely moist and wet at ground level. Moistening progresses as a result of mild temperatures. Higher up, fresh and somewhat older snowdrift accumulations were in places deposited atop soft layers or graupel and are prone to triggering. There is barely any snow below 1500 m, even in north-facing terrain.

**Outlook**

On Thursday, too, gliding snow will remain the predominant problem, due to showery rainfall.

Translated by Jeffrey McCabe, [www.creativtrans.com](http://www.creativtrans.com)

**Avalanche problems**



**Danger ratings**



**Expositions**

