

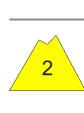


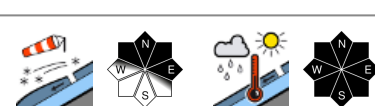


Snow moistens rapidly due to mild temperatures

	Allgäuer Vorberge, Bayerische Voralpen West, Bayerische Voralpen Mitte, Bayerische Voralpen Ost, Chiemgauer Alpen West, Chiemgauer Alpen Ost, Ammergauer Alpen	
	Allgäuer Hauptkamm	
	Werdenfelser Alpen, Berchtesgadener Alpen 2200 m	

Avalanche problems



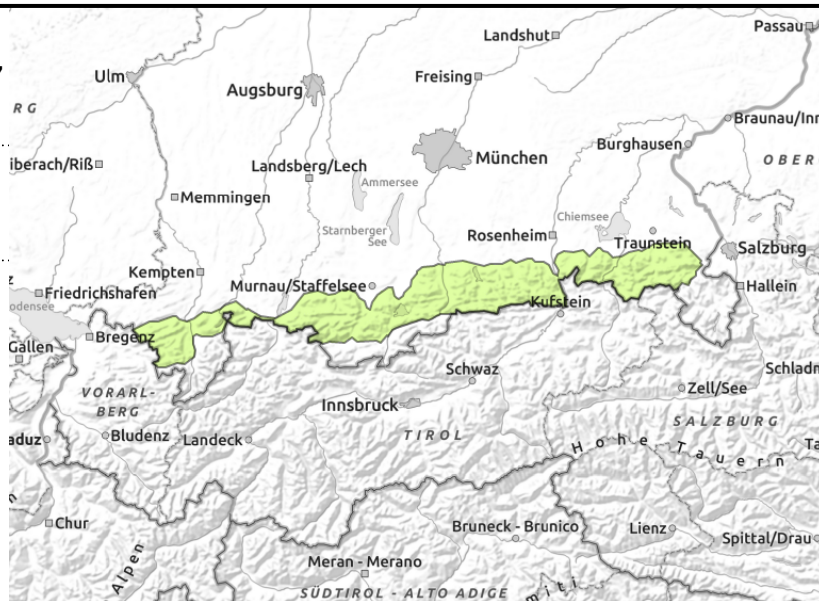
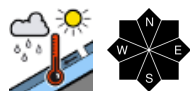
Danger ratings



Expositions



Allgäuer Vorberge, Bayerische Voralpen West, Bayerische Voralpen Mitte, Bayerische Voralpen Ost, Chiemgauer Alpen West, Chiemgauer Alpen Ost, Ammergauer Alpen



Limited frequency of danger zones

Avalanche danger is low. Main problem: wet snow. Wet glide-snow avalanches can trigger naturally in steep terrain in all aspects, releases mostly small, occasionally medium-sized.

In addition, on extremely steep rough and rocky slopes in all aspects, small wet loose-snow avalanches are possible, triggerable by winter sports enthusiasts in very steep terrain.

Snowpack structure

The snowpack surface was moist, during nights of clear skies it forms a thin melt-freeze crust which rapidly softens during the day if temperatures are mild, becoming moist and forfeiting its firmness. Recent snowdrift accumulations have settled, still trigger-prone on high ridgeline and summit slopes in shady aspects. The old snowpack is stable, moist and wet at ground level. Below 1500 m, hardly any snow on the ground, even on north-facing slopes.

Outlook

Mild until the weekend. The wet-snow problem persists. Avalanche danger levels are not expected to change significantly.

Avalanche problems



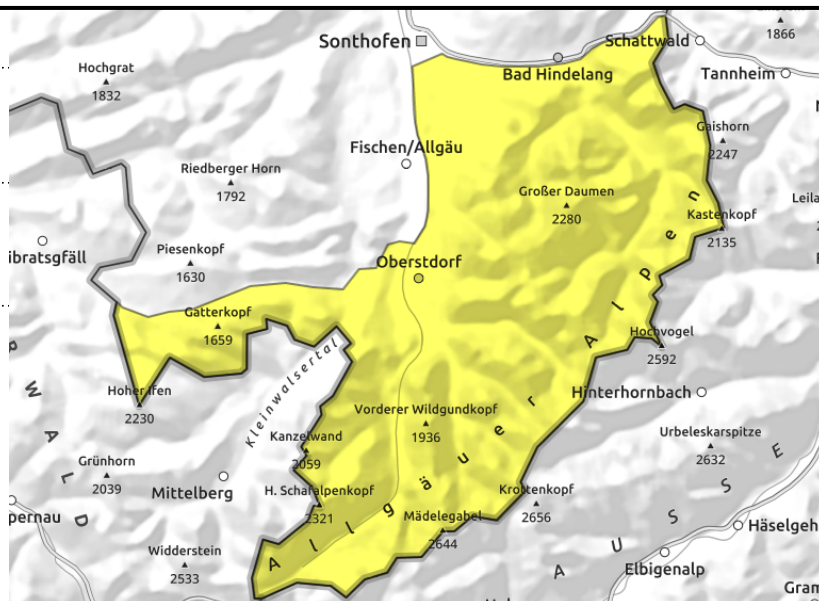
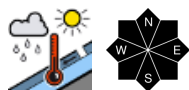
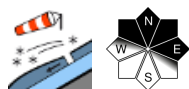
Danger ratings



Expositions



Allgäuer Hauptkamm



Beware gliding snow

Avalanche danger is moderate. Main problem: snowdrift accumulations. Slab avalanches (small-to-medium) can trigger in some places by 1 person. Danger zones occur in steep rigeline terrain on NW/N/E facing slopes and in wind-loaded gullies and bowls.

On smooth slopes, isolated glide-snow avalanches can trigger, releases mostly small. Glide-snow avalanches can grow to larger size in isolated cases. Avoid zones below glide cracks.

In addition, on extremely steep rough and rocky slopes in all aspects, small wet loose-snow avalanches are possible, triggerable by winter sports enthusiasts in very steep terrain.

Snowpack structure

The snowpack surface was moist, during nights of clear skies it forms a thin melt-freeze crust which rapidly softens during the day if temperatures are mild, becoming moist and forfeiting its firmness. Recent snowdrift accumulations have settled, still trigger-prone on high ridgeline and summit slopes in shady aspects. The old snowpack is stable, moist and wet at ground level. Below 1500 m, hardly any snow on the ground, even on north-facing slopes.

Outlook

Mild until the weekend. The wet-snow avalanche danger will increase somewhat.

Avalanche problems



Danger ratings

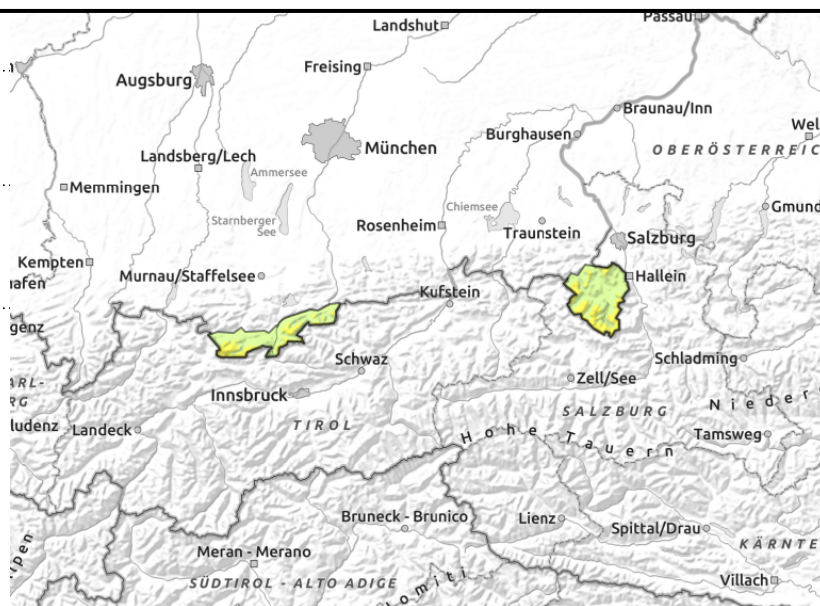
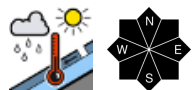
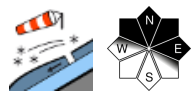


Expositions





Werdenfeller Alpen, Berchtesgadener Alpen



Snowdrift accumulations at high altitudes

Avalanche dangre above 2200 m is moderate. Main problem: snowdrift accumulations. Slab avalanches (small-to-medium) can trigger in some places by 1 person. Danger zones occur in steep rigeline terrain on NW/N/E facing slopes and in wind-loaded gullies and bowls.

On smooth slopes, isolated glide-snow avalanches can trigger, releases mostly small. Glide-snow avalanches can grow to larger size in isolated cases. Avoid zones below glide cracks.

In addition, on extremely steep rough and rocky slopes in all aspects, small wet loose-snow avalanches are possible, triggerable by winter sports enthusiasts in very steep terrain.

Snowpack structure

The snowpack surface was moist, during nights of clear skies it forms a thin melt-freeze crust which rapidly softens during the day if temperatures are mild, becoming moist and forfeiting its firmness. Recent snowdrift accumulations have settled, still trigger-prone on high ridgeline and summit slopes in shady aspects. The old snowpack is stable, moist and wet at ground level. Below 1500 m, hardly any snow on the ground, even on north-facing slopes.

Outlook

Mild until the weekend. The wet-snow avalanche danger will increase somewhat.

Translated by Jeffrey McCabe, www.creativtrans.com

Avalanche problems



Danger ratings



Expositions

