
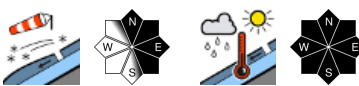






## Snowdrifts at high altitudes, wet snow at intermediate altitudes

	Allgäuer Vorberge, Bayerische Voralpen West, Bayerische Voralpen Mitte, Bayerische Voralpen Ost, Chiemgauer Alpen West, Chiemgauer Alpen Ost, Berchtesgadener Alpen, Ammergauer Alpen	
	Allgäuer Hauptkamm	
	Werdenfeller Alpen	

### Avalanche problems



### Danger ratings

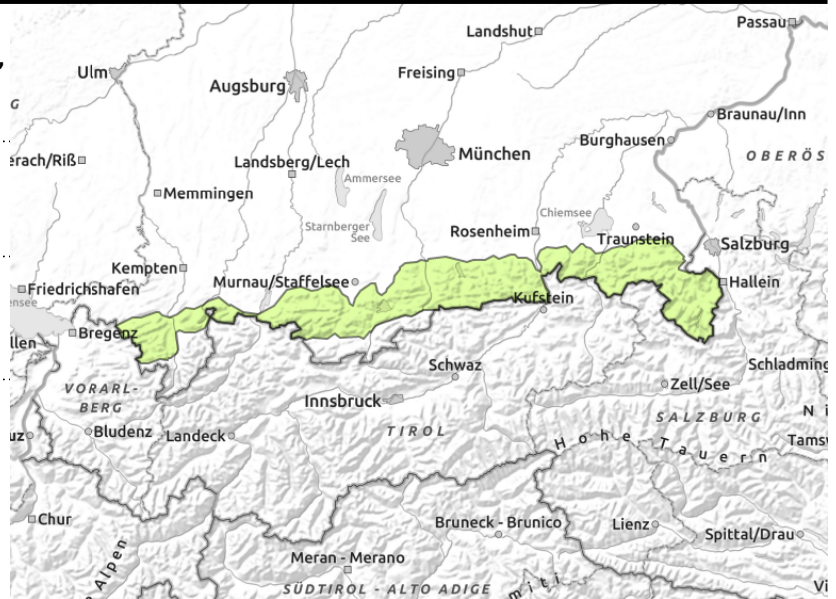
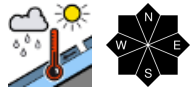
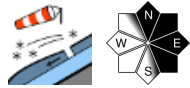


### Expositions





Allgäuer Vorberge, Bayerische Voralpen West, Bayerische Voralpen Mitte, Bayerische Voralpen Ost, Chiemgauer Alpen West, Chiemgauer Alpen Ost, Berchtesgadener Alpen, Ammergauer Alpen



## Beware: danger of small slabs

Avalanche danger is low. Main problem: freshly generated snowdrift accumulations. Small slab avalanches can be triggered in some places by 1 person. Danger zones occur in steep ridgeline terrain and steep gullies and bowls on N/E/SE facing slopes.

On very steep slopes, isolated wet loose-snow avalanches can trigger naturally. On smooth ground, isolated wet glide-snow avalanches can trigger. Wet avalanche releases mostly small.

## Snowpack structure

Cold fresh snow and drifts deposited atop a warm, moist old snowpack surface, often bonding poorly. East of the Inn the amounts of fresh snow are very small. On steep shady slopes, older snowdrift accumulations are still trigger-prone. The old snowpack is stable, thoroughly moist and wet at ground level. Below 1500 m, hardly any snow on the ground, even on north-facing slopes.

## Outlook

Avalanche danger levels are not expected to change significantly.

### Avalanche problems



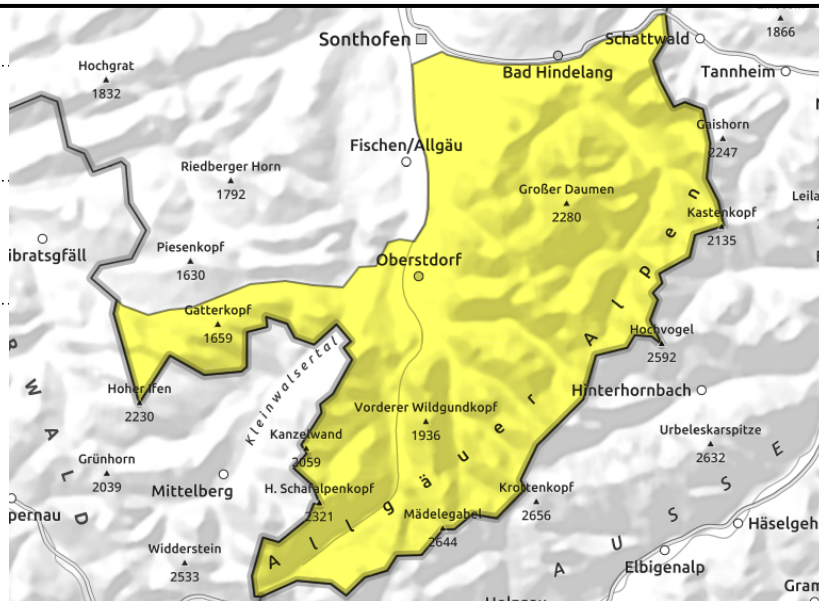
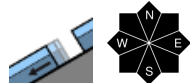
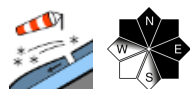
### Danger ratings



### Expositions



**Allgäuer Hauptkamm**



**Glide-snow avalanches can grow large in isolated cases**

Avalanche danger is moderate. Main problem: snowdrift accumulations. Slab avalanches (small-to-medium) can trigger in some places by 1 person. Danger zones occur in steep rigeline terrain on N/E facing slopes and in wind-loaded gullies and bowls, their frequency increases with ascending altitude. There is also a gliding snow problem. Danger zones occur in all aspects on very steep smooth slopes. Glide-snow avalanches can grow to large size in isolated cases. Avoid zones below glide cracks. In steep rocky terrain, isolated small wet loose-snow avalanches can trigger naturally.

**Snowpack structure**

Cold fresh snow and drifts deposited atop a warm, moist old snowpack surface, often bonding poorly. East of the Inn the amounts of fresh snow are very small. On steep shady slopes, older snowdrift accumulations are still trigger-prone. The old snowpack is stable, thoroughly moist and wet at ground level. Below 1500 m, hardly any snow on the ground, even on north-facing slopes.

**Outlook**

Avalanche danger levels are not expected to change significantly.

**Avalanche problems**



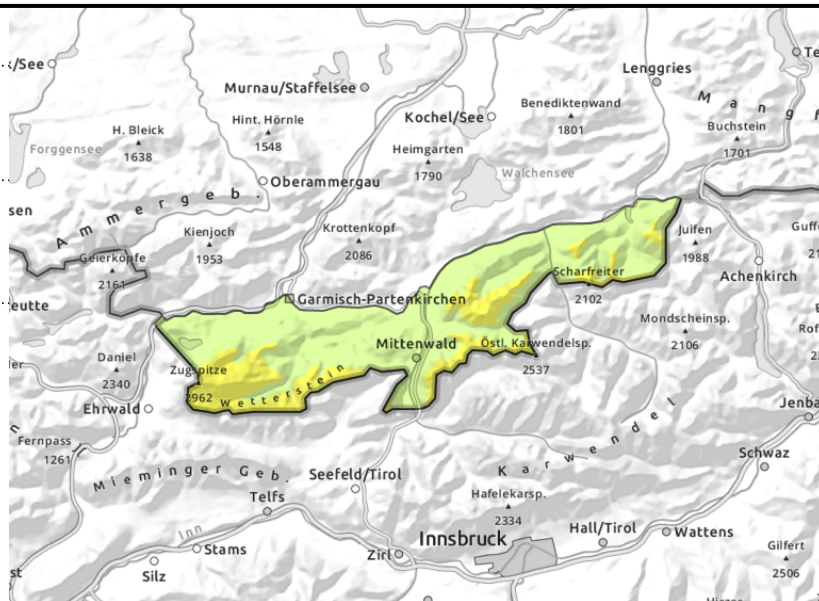
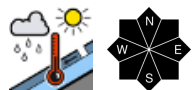
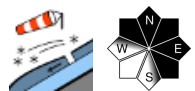
**Danger ratings**



**Expositions**



**Werdenfeller Alpen**



**Evaluate fresh and older snowdrifts with caution, esp. at higher altitudes**

Avalanche danger above 2000 m is moderate, below that altitude danger is low. Main problem: snowdrift accumulations. Small slab avalanches can be triggered in some places by 1 person. Danger zones occur in steep ridgeline terrain and steep gullies and bowls on N/E/ facing slopes.

On very steep slopes, isolated wet loose-snow avalanches can trigger naturally. On smooth ground, isolated wet glide-snow avalanches can trigger. Wet avalanche releases mostly small.

**Snowpack structure**

Cold fresh snow and drifts deposited atop a warm, moist old snowpack surface, often bonding poorly. East of the Inn the amounts of fresh snow are very small. On steep shady slopes, older snowdrift accumulations are still trigger-prone. The old snowpack is stable, thoroughly moist and wet at ground level. Below 1500 m, hardly any snow on the ground, even on north-facing slopes.

**Outlook**

Avalanche danger levels are not expected to change significantly.

Translated by Jeffrey McCabe, [www.creativtrans.com](http://www.creativtrans.com)

**Avalanche problems**



**Danger ratings**



**Expositions**

