
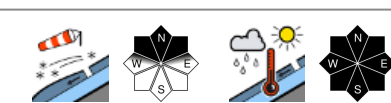






## Possibility of slab avalanches on steep shady slopes

	Allgäuer Vorberge, Bayerische Voralpen West, Bayerische Voralpen Mitte, Bayerische Voralpen Ost, Chiemgauer Alpen West, Chiemgauer Alpen Ost, Berchtesgadener Alpen	
	Allgäuer Hauptkamm	
	Werdenfelser Alpen, Ammergauer Alpen forestline	

### Avalanche problems



### Danger ratings

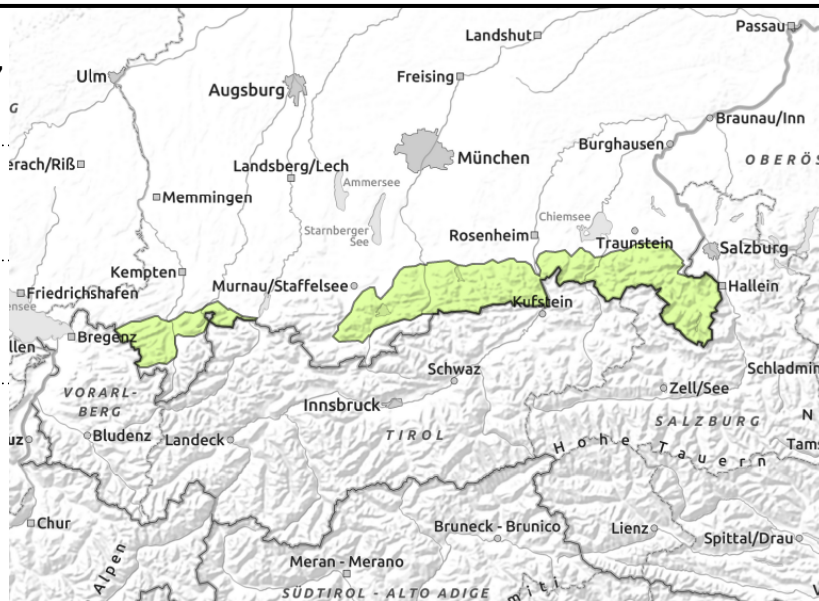
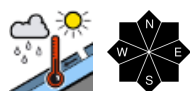
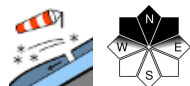


### Expositions





**Allgäuer Vorberge, Bayerische Voralpen West, Bayerische Voralpen Mitte, Bayerische Voralpen Ost, Chiemgauer Alpen West, Chiemgauer Alpen Ost, Berchtesgadener Alpen**



**Heed danger of small wet loose and glide snow avalanches in very steep terrain.**

Avalanche danger is low. Main problem: snowdrifts. On north-facing slopes, small slab avalanches can be triggered in places even by minimum additional loading. Avalanche prone locations mainly occur below slope discontinuities and in wind-loaded gullies and bowls. Experienced individuals will recognize and avoid them.

It is in addition possible that isolated mostly small glide snow avalanches release spontaneously on very steep slopes with smooth ground. Small wet loose snow avalanches can also trigger in extremely steep rocky terrain.

**Snowpack structure**

On shady slopes at higher altitudes, Foehn continues to transport the partly still loose superficial snow. Underneath the fresh and older snowdrift accumulations there are in some places trigger-prone layers. On the sunny side a melt-freeze crust forms during the night which softens again during the course of the day. The old snowpack as such is stable, thoroughly moist and wet down to the ground. There is barely any snow below 1500 m.

**Outlook**

Avalanche danger levels will not change significantly.

**Avalanche problems**



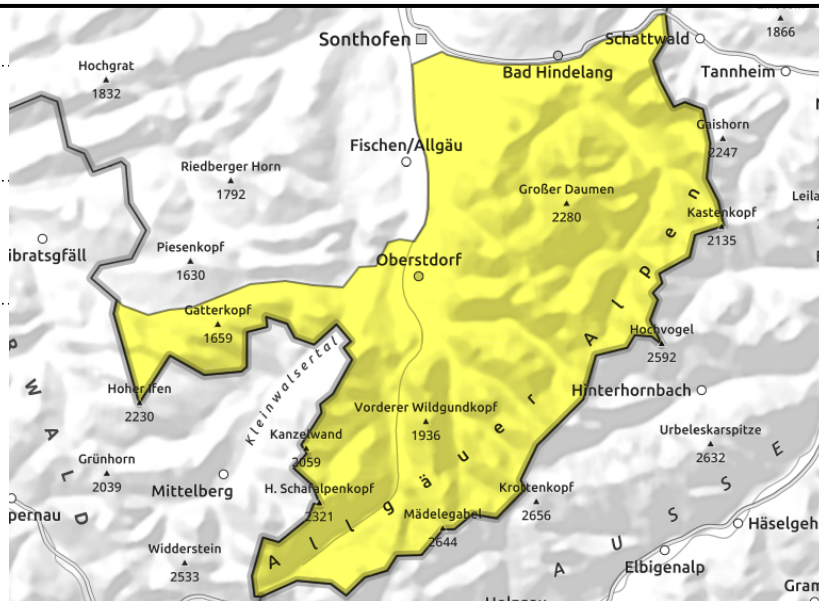
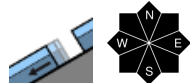
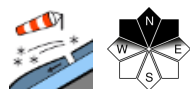
**Danger ratings**



**Expositions**



## Allgäuer Hauptkamm



## Isolated glide snow avalanches can grow to large size.

Avalanche danger is moderate. Main problem: snowdrifts. In some places medium-sized slab avalanches can be triggered even by minimal additional loading on steep north-facing slopes. Avalanche prone locations mainly occur below slope discontinuities and in wind-loaded gullies and bowls. The higher the altitude the bigger they become. Experienced individuals will recognize and avoid them.

In addition, the gliding snow danger persists. Avalanche prone locations are found in all aspects. Individual glide snow avalanches can grow to large size. Zones beneath glide cracks should be avoided.

Isolated smaller wet loose snow avalanches can also trigger naturally in steep rocky terrain.

### Snowpack structure

On shady slopes at higher altitudes, Foehn continues to transport the partly still loose superficial snow. Underneath the fresh and older snowdrift accumulations there are in some places trigger-prone layers. On the sunny side a melt-freeze crust forms during the night which softens again during the course of the day. The old snowpack as such is stable, thoroughly moist and wet down to the ground. There is barely any snow below 1500 m.

### Outlook

Avalanche danger levels are not expected to change significantly.

#### Avalanche problems



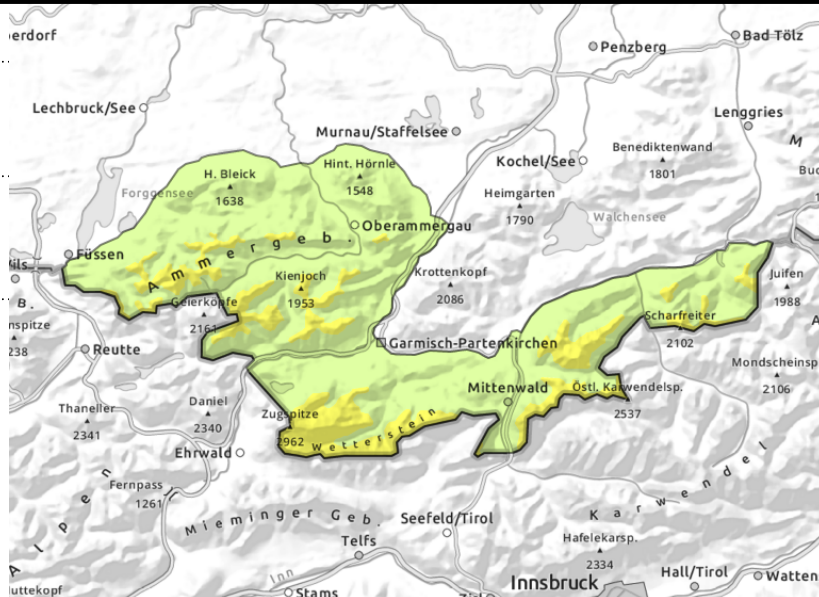
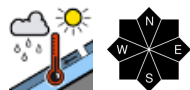
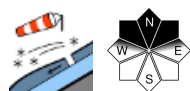
#### Danger ratings



#### Expositions



**Werdenfelser Alpen, Ammergauer Alpen**



**Beware wet loose and glide snow avalanches in very steep terrain.**

Avalanche danger above the timberline is moderate; below the timberline danger is low. Main problem: snowdrifts. On north-facing slopes, medium-sized slab avalanches can be triggered even by minimal additional loading. Avalanche prone locations mainly occur below slope discontinuities and in wind-loaded gullies and bowls. The higher the altitude the bigger they become. Experienced individuals will recognize and avoid them.

In addition, isolated wet loose snow avalanches can also trigger naturally in steep rocky terrain. Possibility of naturally releasing wet glide snow avalanches on smooth steep grass-covered slopes. They generally remain small-sized.

**Snowpack structure**

On shady slopes at higher altitudes, Foehn continues to transport the partly still loose superficial snow. Underneath the fresh and older snowdrift accumulations there are in some places trigger-prone layers. On the sunny side a melt-freeze crust forms during the night which softens again during the course of the day. The old snowpack as such is stable, thoroughly moist and wet down to the ground. There is barely any snow below 1500 m.

**Outlook**

Avalanche danger levels are not expected to change significantly.

Translated by Jeffrey McCabe, [www.creativtrans.com](http://www.creativtrans.com)

**Avalanche problems**



**Danger ratings**



**Expositions**

