

More gliding snow activity in the west



Ammergauer Alpen, Allgäuer Vorberge, Bayerische Voralpen West, Bayerische Voralpen Mitte, Bayerische Voralpen Ost, Chiemgauer Alpen West, Chiemgauer Alpen Ost, Werdenfeller Alpen, Berchtesgadener Alpen



Allgäuer Hauptkamm



Avalanche problems



Danger ratings

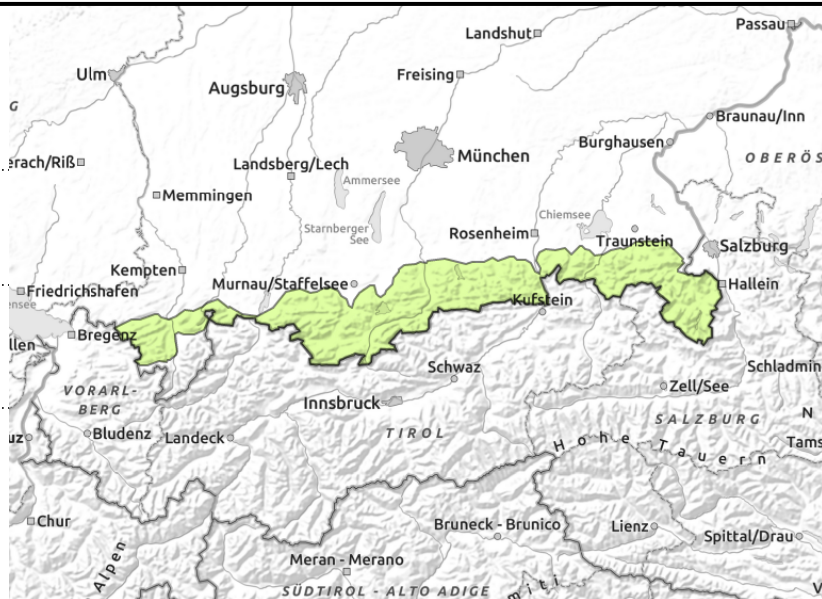
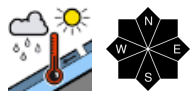
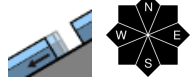


Expositions





Ammergauer Alpen, Allgäuer Vorberge, Bayerische Voralpen West, Bayerische Voralpen Mitte, Bayerische Voralpen Ost, Chiemgauer Alpen West, Chiemgauer Alpen Ost, Werdenfelser Alpen, Berchtesgadener Alpen



Beware taking a fall on hard snowpack surface

Avalanche danger is low. Main problem: gliding snow. Glide snow avalanches can release naturally on very steep smooth grass-covered slopes in all aspects that have not yet discharged. They tend to stay small. Avoid zones below glide cracks.

In addition, possibility of - mostly small - wet loose snow avalanches in extremely steep terrain. In steep terrain, even 1 person engaged in winter sports can release them. Heed dangers of being dragged along and of taking a fall.

Snowpack structure

Sunday night is partly cloudy. The snowpack surface is widespread moist. Only in zones with sufficient radiation will a crust form that is capable of bearing loads which softens again due to daytime warming. In higher and wind-exposed terrain the snowpack is predominantly dry and mostly capable of bearing loads. In north aspects at high altitudes there are still melt-freeze crusts in the uppermost part of the snowpack; between them, soft intermediate layers can be embedded. The snowpack is in many places very compact and by and large stable. Where increasing moisture seeps into the snowpack it forfeits its firmness. At lower altitudes the snowpack is now thoroughly moist and wet down to the ground. In places, gliding movements are possible. On very steep shady slopes there is in isolated patches still powder snow. In all aspects below 1500 m an area-wide cohesive snowpack is rare.

Outlook

By mid-week there will be widespread some new snow. The danger of dry avalanches will become predominant.

Avalanche problems



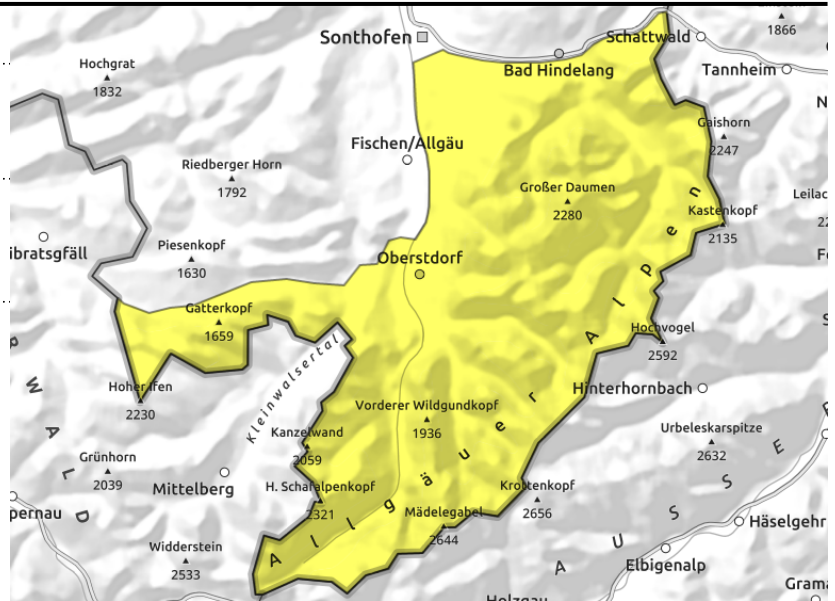
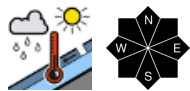
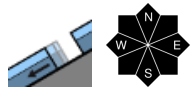
Danger ratings



Expositions



Allgäuer Hauptkamm



Many open glide cracks

Avalanche danger is moderate. Main problem: gliding snow. Glide snow avalanches can release naturally on very steep smooth grass-covered slopes in all aspects that have not yet discharged and reach medium size. Avoid zones below glide cracks.

In addition, possibility of - mostly small - wet loose snow avalanches in extremely steep terrain. In steep terrain, even 1 person engaged in winter sports can release them. Heed dangers of being dragged along and of taking a fall.

Snowpack structure

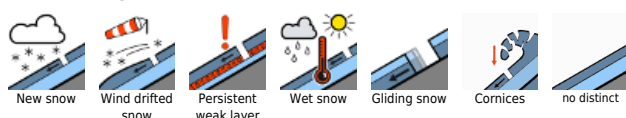
Sunday night is partly cloudy. The snowpack surface is widespread moist. Only in zones with sufficient radiation will a crust form that is capable of bearing loads which softens again due to daytime warming. In higher and wind-exposed terrain the snowpack is predominantly dry and mostly capable of bearing loads. In north aspects at high altitude there are sill melt-freeze crusts in the uppermost part of the snowpack. Soft layers consisting of faceted-rounded crystals are embedded between them which are unlikely to trigger. The snowpack is in many places very compact and by and large stable. Where increasing moisture seeps into the snowpack it forfeits its firmness. At lower altitudes the snowpack is now thoroughly moist and wet down to the ground. The consequence are gliding movements. On very steep shady slopes there is in isolated patches still powder; in south aspects below 1500 m the ground is mostly bare of snow.

Outlook

By mid-week there will be widespread some new snow. The danger of dry avalanches will become predominant.

Translated by Jeffrey McCabe, www.creativtrans.com

Avalanche problems



Danger ratings



Expositions

