

UPDATE: in Allgäu increased gliding snow activity

	Ammergauer Alpen, Allgäuer Vorberge, Bayerische Voralpen West, Bayerische Voralpen Mitte, Bayerische Voralpen Ost, Chiemgauer Alpen West, Chiemgauer Alpen Ost, Werdenfeller Alpen, Berchtesgadener Alpen	
	Allgäuer Hauptkamm	

Avalanche problems



Danger ratings

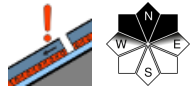
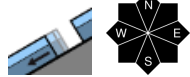


Expositions





Ammergauer Alpen, Allgäuer Vorberge, Bayerische Voralpen West, Bayerische Voralpen Mitte, Bayerische Voralpen Ost, Chiemgauer Alpen West, Chiemgauer Alpen Ost, Werdenfelser Alpen, Berchtesgadener Alpen



Fresh snow moistening due to higher temperatures

Avalanche danger is low. A persistent weak layer problem persists on isolated shady slopes at high altitudes. Weak layers can trigger most probably in extremely steep terrain, in transitions from shallow to deep snow, e.g. at entries into gullies, mostly by large additional loading, such as a group of skiers without distances. Slab avalanches remain small, the dangers of falling outweigh those of being buried in snow masses.

Isolated glide-snow avalanches in addition, are possible on very steep smooth grass-covered slopes which have not yet discharged. They occur seldom, but in all aspects and at any time of day or night, releases maximum medium size.

Snowpack structure

During Friday night a few centimetres of fresh snow fell, at high altitudes deposited atop thin layers of fresh snow from the previous day or atop a melt-freeze crust capable of bearing loads. Otherwise it lies deposited atop a very compact and stable snowpack. Foehn winds will arise during the day on Saturday, it will be milder. The loose snow will become moist, the melt-freeze crust can soften. On shady slopes there is still powder. The crusts are thinner, beneath them is a weak layer. At low altitudes the snowpack is thoroughly wet down to the ground. Up to 1500 m on sunny slopes the ground is largely bare of snow.

Outlook

Temperatures will rise on Sunday. On the weekend, more wet-snow activity.

Avalanche problems



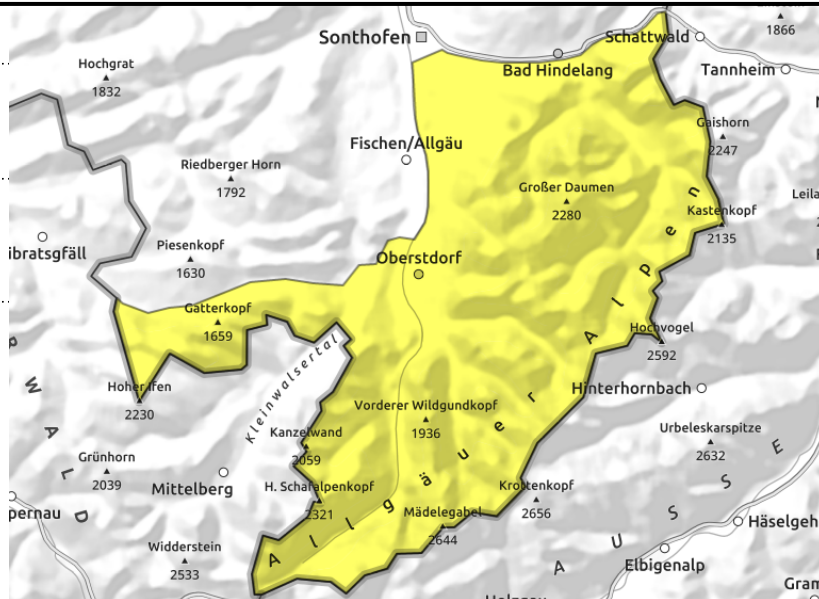
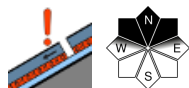
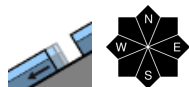
Danger ratings



Expositions



Allgäuer Hauptkamm



Avalanche danger is moderate. Glide-snow avalanches are possible on very steep smooth grass-covered slopes which have not yet discharged, in all aspects and at any time of day or night, releases can reach medium size. Avoid zones below glide cracks.

At high altitudes, a persistent weak layer problem persists on isolated shady slopes at high altitudes. Weak layers can trigger most probably in extremely steep terrain, in transitions from shallow to deep snow, e.g. at entries into gullies, mostly by large additional loading, such as a group of skiers without distances. Slab avalanche remain small, the dangers of falling outweigh those of being buried in snow masses.

During the course of the day in extremely steep rough and rocky terrain, small wet loose-snow slides can be expected.

Snowpack structure

During Friday night a few centimetres of fresh snow fell, at high altitudes deposited atop thin layers of fresh snow from the previous day or atop a melt-freeze crust capable of bearing loads. Otherwise it lies deposited atop a very compact and stable snowpack. Foehn winds will arise during the day on Saturday, it will be milder. The loose snow will become moist, the melt-freeze crust can soften. On shady slopes there is still powder. The crusts are thinner, beneath them is a weak layer. At low altitudes the snowpack is thoroughly wet down to the ground. Up to 1500 m on sunny slopes the ground is largely bare of snow.

Outlook

Temperatures will rise on Sunday. On the weekend, more wet-snow activity.

Translated by Jeffrey McCabe, www.creativtrans.com

Avalanche problems



Danger ratings



Expositions

