

Low avalanche danger



Bayerische Voralpen Mitte, Bayerische Voralpen Ost, Chiemgauer Alpen West, Chiemgauer Alpen Ost, Ammergauer Alpen, Bayerische Voralpen West, Berchtesgadener Alpen, Werdenfeller Alpen, Allgäuer Hauptkamm, Allgäuer Vorberge



Avalanche problems



Danger ratings

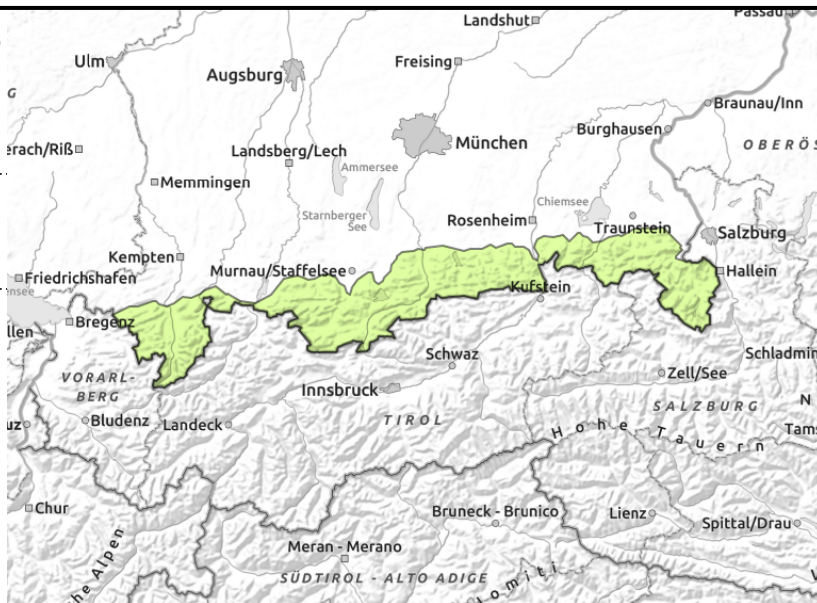
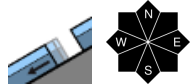


Expositions





Bayerische Voralpen Mitte, Bayerische Voralpen Ost, Chiemgauer Alpen West, Chiemgauer Alpen Ost, Ammergauer Alpen, Bayerische Voralpen West, Berchtesgadener Alpen, Werdenfeller Alpen, Allgäuer Hauptkamm, Allgäuer Vorberge



Danger of taking a fall on icy snowpack surface

Avalanche danger is low. Gliding snow problem persists. Glide snow avalanches can trigger naturally on very steep slopes with smooth ground, such as grass-covered slopes or sparsely wooded forest zones. Isolated releases can reach medium size. Avoid zones below glide cracks.

Snowpack structure

The snowpack is in many places in the morning encrusted and capable of bearing loads. As the day progresses it softens again in particular in the sun. The snowpack is extremely compact and stable. Up to high altitudes it is isothermal and frequently wet at ground level. Gliding movements of snow masses over smooth ground are the consequence. Even on north-facing slopes there is only little snow left below 1300 m; on south-facing slopes the ground is completely bare approximately up to the treeline.

Outlook

As a consequence of cooler weather and some new snow the avalanche danger will rise on Sunday.

Translated by Jeffrey McCabe, www.creativtrans.com

Avalanche problems



Danger ratings



Expositions

