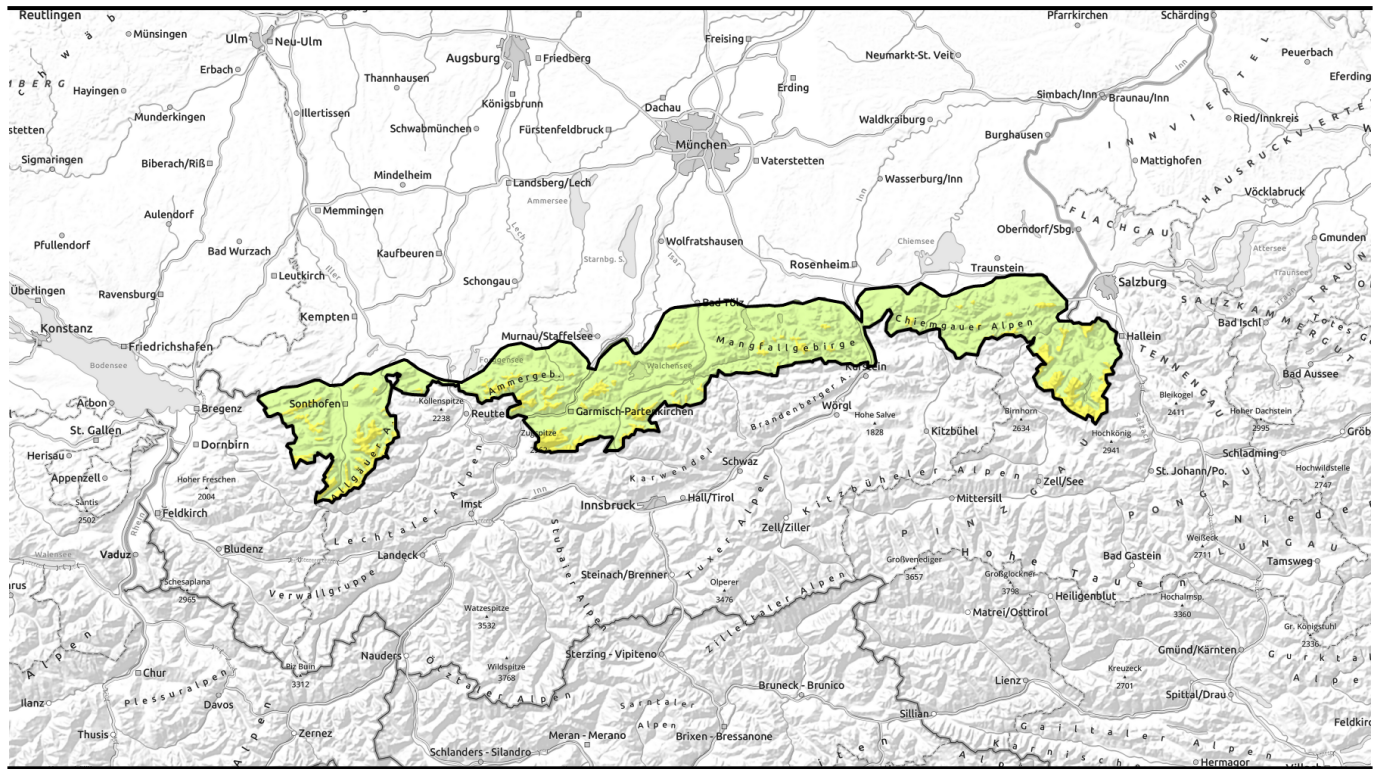


valid until: **Tuesday, 23.01.2024, 18:00 h**



## In regions with high precipitation more and more extensive avalanche prone locations

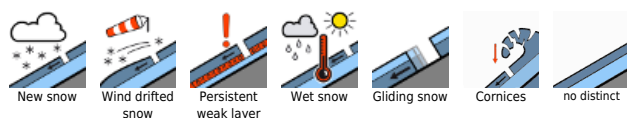


forestline

Bayerische Voralpen West, Bayerische Voralpen Mitte, Bayerische Voralpen Ost, Chiemgauer Alpen West, Chiemgauer Alpen Ost, Ammergauer Alpen, Allgäuer Vorberge, Allgäuer Hauptkamm, Werdenfeller Alpen, Berchtesgadener Alpen



### Avalanche problems



### Danger ratings



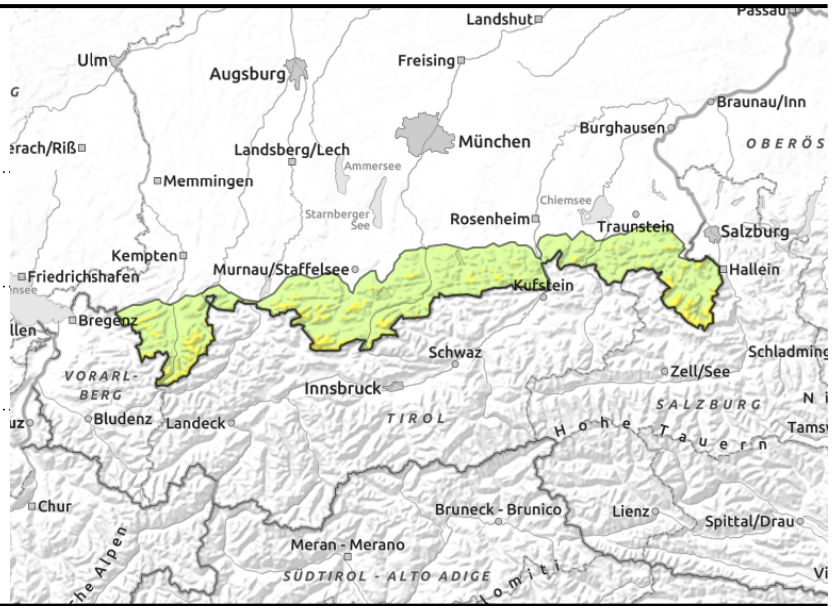
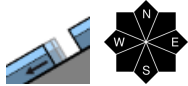
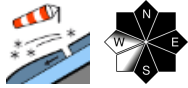
### Expositions





valid until: **Tuesday, 23.01.2024, 18:00 h**

**Bayerische Voralpen West, Bayerische Voralpen Mitte, Bayerische Voralpen Ost, Chiemgauer Alpen West, Chiemgauer Alpen Ost, Ammergauer Alpen, Allgäuer Vorberge, Allgäuer Hauptkamm, Werdenfeller Alpen, Berchtesgadener Alpen**



## Snowdrift problem intensifies with ascending altitude

Avalanche danger is moderate above the treeline, below that altitude danger is low. Fresh snowdrifts are the main problem. Avalanche prone locations are found in steep ridgeline terrain in NW/E/S aspects, distant from ridges behind terrain discontinuities, as well as in wind-loaded gullies and bowls. Frequency and size of danger zones increase with ascending altitude. Slab avalanches can even be triggered by minimum additional loading such as a single skier and reach medium size. Caution urged toward dangers of taking a fall or being buried in snow.

In addition, mostly small (in isolated cases medium-sized) glide-snow avalanches can trigger on smooth grass-covered slopes and in forest clearances. Avoid zones below glide cracks.

## Snowpack structure

Westerly winds will transport the new snow extensively. At higher altitudes fresh snowdrift accumulations are being generated that are prone to triggering. At intermediate altitudes the snowpack is superficially moist, therefore new snow and snowdrifts can bond better with it. Bonding deteriorates with ascending altitude. Only rarely are there still weak intermediate layers embedded in the uppermost 50 cm of the snowpack. The old snowpack is mostly stable and compact. At lower altitudes rain and a wet snowpack basis enhance gliding movements over smooth ground.

## Outlook

By mid-week temperatures will rise. Avalanche activity and danger will increase.

Translated by Jeffrey McCabe, [www.creativtrans.com](http://www.creativtrans.com)

### Avalanche problems



### Danger ratings



### Expositions

