

## Wet snow problem

	<p>Allgäuer Hauptkamm, Allgäuer Vorberge</p>	
	<p>Ammergauer Alpen, Werdenfelser Alpen, Bayerische Voralpen West, Bayerische Voralpen Mitte, Bayerische Voralpen Ost, Chiemgauer Alpen West, Chiemgauer Alpen Ost, Berchtesgadener Alpen</p>	

### Avalanche problems



### Danger ratings

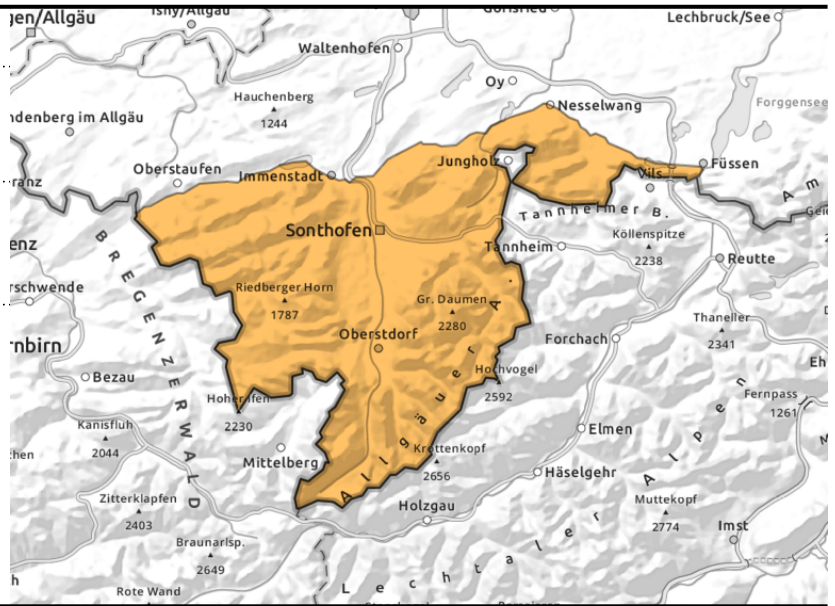
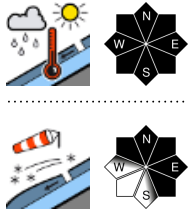


### Expositions



valid for: **Thursday, 18.01.2024**

**Allgäuer Hauptkamm, Allgäuer Vorberge**



**Wet slab-, loose-snow and glide-snow avalanches expected**

Avalanche danger in the Allgäu Alps is considerable. Main problem: naturally triggering wet snow and slab avalanches on steep slopes in all aspects. Also gliding snow activity on smooth grass-covered slopes and in forest lanes are increasing. In isolated cases, releases can reach large size and place exposed transportation routes at risk.

In addition, snowdrifts are a problem at high altitudes. Danger zones are numerous, occur in steep ridgeline terrain in all aspects, behind discontinuities and in wind-loaded gullies and bowls. Snowdrift accumulations can be triggered as slab avalanches by one sole person and reach medium size.

**Snowpack structure**

Rising temperatures and intermittent rainfall will make the surface wet, the moisture will seep deep into the snowpack, leading to a loss of firmness and instability of loose snow. In additional the water can remain stored on the the melt-freeze crusts and destabilize further the weak layers, gliding snow masses are the result. Huge temperature disparities (cold on warm) at high altitudes are creating trigger-prone weak layers in the uppermost part of the snowpack at high altitudes. On Thursday the snowfall level will gradually descend, fresh trigger-prone snowdrifts will be generated.

**Outlook**

Wet-snow avalanche danger will slowly recede over the next few days as temperatures drop. At high altitudes, fresh snowdrift accumulations will be generated.

**Avalanche problems**



**Danger ratings**



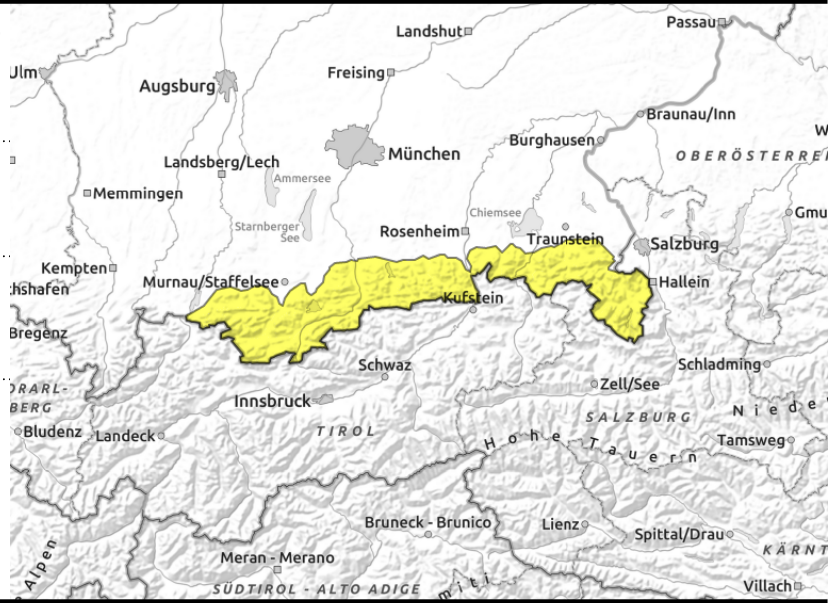
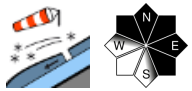
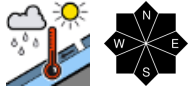
**Expositions**





valid for: **Thursday, 18.01.2024**

**Ammergauer Alpen, Werdenfelser Alpen, Bayerische Voralpen West, Bayerische Voralpen Mitte, Bayerische Voralpen Ost, Chiemgauer Alpen West, Chiemgauer Alpen Ost, Berchtesgadener Alpen**



**Wet slab-, loose-snow and glide-snow avalanches possible**

Avalanche danger from Ammergau to Berchtesgaden Alps is moderate. Main problem: wet snow. Naturally triggered wet loose-snow avalanches in steep rocky terrain and glide-snow avalanches on smooth grass-covered slopes and in forest lanes are possible in all aspects. Releases are usually small.

In addition, snowdrifts are a problem at high altitudes. Danger zones are numerous, occur in steep ridgeline terrain in all aspects, behind discontinuities and in wind-loaded gullies and bowls. Snowdrift accumulations can be triggered as slab avalanches by one sole person and reach medium size.

**Snowpack structure**

Rising temperatures and intermittent rainfall will make the surface wet, the moisture will seep deep into the snowpack, leading to a loss of firmness and instability of loose snow. In additional the water can remain stored on the the melt-freeze crusts and destabilize further the weak layers, gliding snow masses are the result. Huge temperature disparities (cold on warm) at high altitudes are creating trigger-prone weak layers in the uppermost part of the snowpack at high altitudes. On Thursday the snowfall level will gradually descend, fresh trigger-prone snowdrifts will be generated.

**Outlook**

Wet-snow avalanche danger will slowly recede over the next few days as temperatures drop.

Translated by Jeffrey McCabe, [www.creativtrans.com](http://www.creativtrans.com)

**Avalanche problems**



**Danger ratings**



**Expositions**

