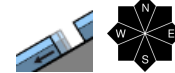


Isolated glide snow avalanches possible - Avoid areas below glide cracks!

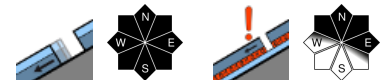


Allgäuer Vorberge, Ammergauer Alpen, Bayerische Voralpen West, Bayerische Voralpen Mitte, Bayerische Voralpen Ost, Chiemgauer Alpen West, Chiemgauer Alpen Ost

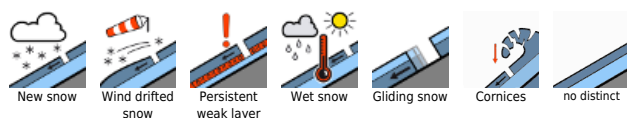


2400 m

Allgäuer Hauptkamm, Werdenfelser Alpen, Berchtesgadener Alpen



Avalanche problems



Danger ratings

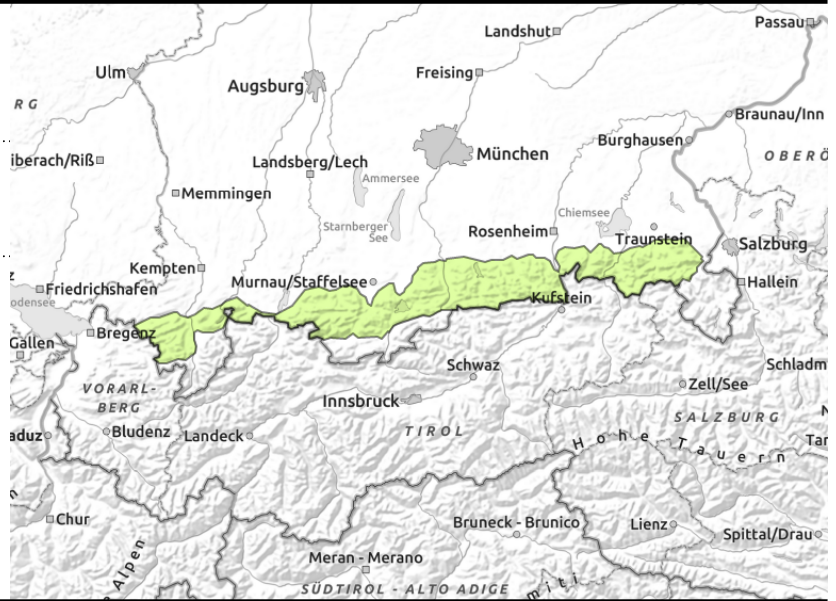
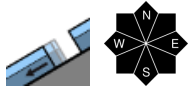


Expositions



valid for: **Friday, 29.12.2023**

Allgäuer Vorberge, Ammergauer Alpen, Bayerische Voralpen West, Bayerische Voralpen Mitte, Bayerische Voralpen Ost, Chiemgauer Alpen West, Chiemgauer Alpen Ost



Possibility of isolated glide snow avalanches

Avalanche danger is low. Main problem: glide snow. Possibility of isolated glide snow avalanches on steep slopes with smooth ground and still enough snow. They can release spontaneously in any aspect and at any time of day or night and tend to remain small. Glide cracks indicate danger zones. In isolated cases small slabs can still be triggered adjacent to ridges and on the shady side in extremely steep high altitude terrain, as a rule only by large additional loading such as a person walking on foot or a group of skiers.

Snowpack structure

Due to very cloudy skies during Thursday night only a thin melt-freeze crust can form which softens swiftly during the day. The snowpack is thoroughly moist and frequently wet down to the ground. Therefore, gliding movements over smooth ground are possible. On very steep shady slopes at higher altitudes weak layers can still be found in isolated cases. Below 1500 m more and more of the surfaces are becoming bare of snow. In the Bavarian Alps it is now almost impossible to go backcountry skiing without having to carry the skis for part of the route.

Outlook

Since the weather will remain stable the avalanche danger is not likely to change much on the weekend.

Avalanche problems



Danger ratings

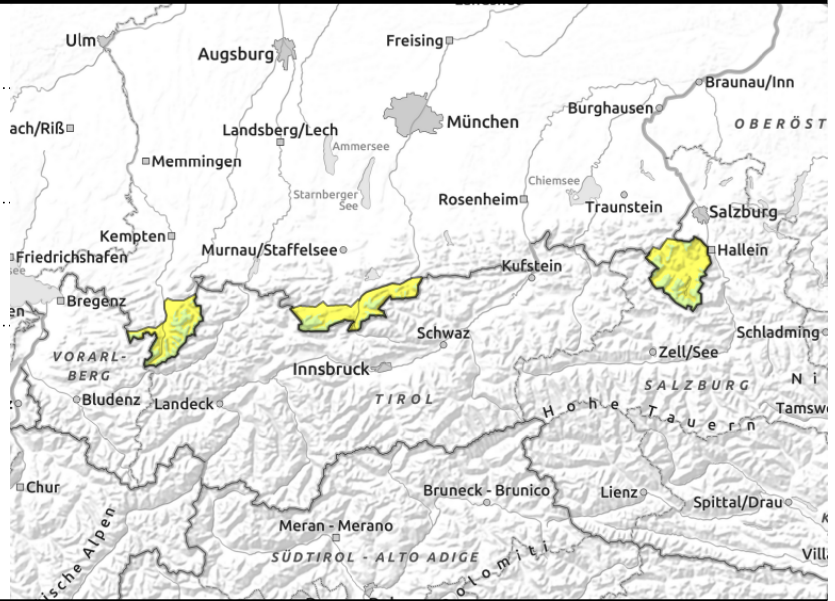
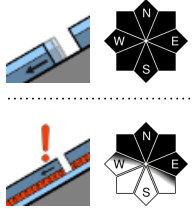


Expositions



valid for: **Friday, 29.12.2023**

Allgäuer Hauptkamm, Werdenfeller Alpen, Berchtesgadener Alpen



Pay heed to danger of taking a fall on icy surfaces! Glide snow possible.

Avalanche danger is moderate below 2400 m, above that altitude it is low. Main problem: glide snow. Below approx. 2400 m possibility of glide snow avalanches on steep slopes with smooth ground and still enough snow. They can release spontaneously in any aspect and at any time of day or night. At higher altitudes glide snow avalanches can grow to medium size; elsewhere they are mostly small. Glide cracks indicate danger zones.

With increasing altitude there are isolated trigger-sensitive locations in the old snow in extremely steep terrain where snow is rather shallow as well as at entries into gullies and bowls. Slab avalanches are mostly only triggerable by large additional loading, such as by a person walking on foot. Slab avalanches can reach medium size.

Snowpack structure

Due to the heavy clouds and mild temperatures during Thursday night, only a thin melt-freeze crust can form at intermediate altitude that softens swiftly during the day. At high altitude the snowpack surface often stays hard and icy. Up to high altitudes, the snowpack is thoroughly moist underneath the melt-freeze crust and frequently wet down to the ground. Therefore, gliding movements over smooth ground are possible. On very steep shady slopes weak layers can still be found in isolated cases near melt-freeze crusts. The snowpack depths vary considerably; ridges and crests are utterly wind blown. Below 1400 m more and more of the surfaces are becoming bare of snow again. In the Bavarian Alps it is now almost impossible to go backcountry skiing without having to carry the skis for part of the route.

Outlook

Since the weather will remain stable the avalanche danger is not likely to change much on the weekend.

Translated by Jeffrey McCabe, www.creativtrans.com

Avalanche problems



Danger ratings



Expositions

