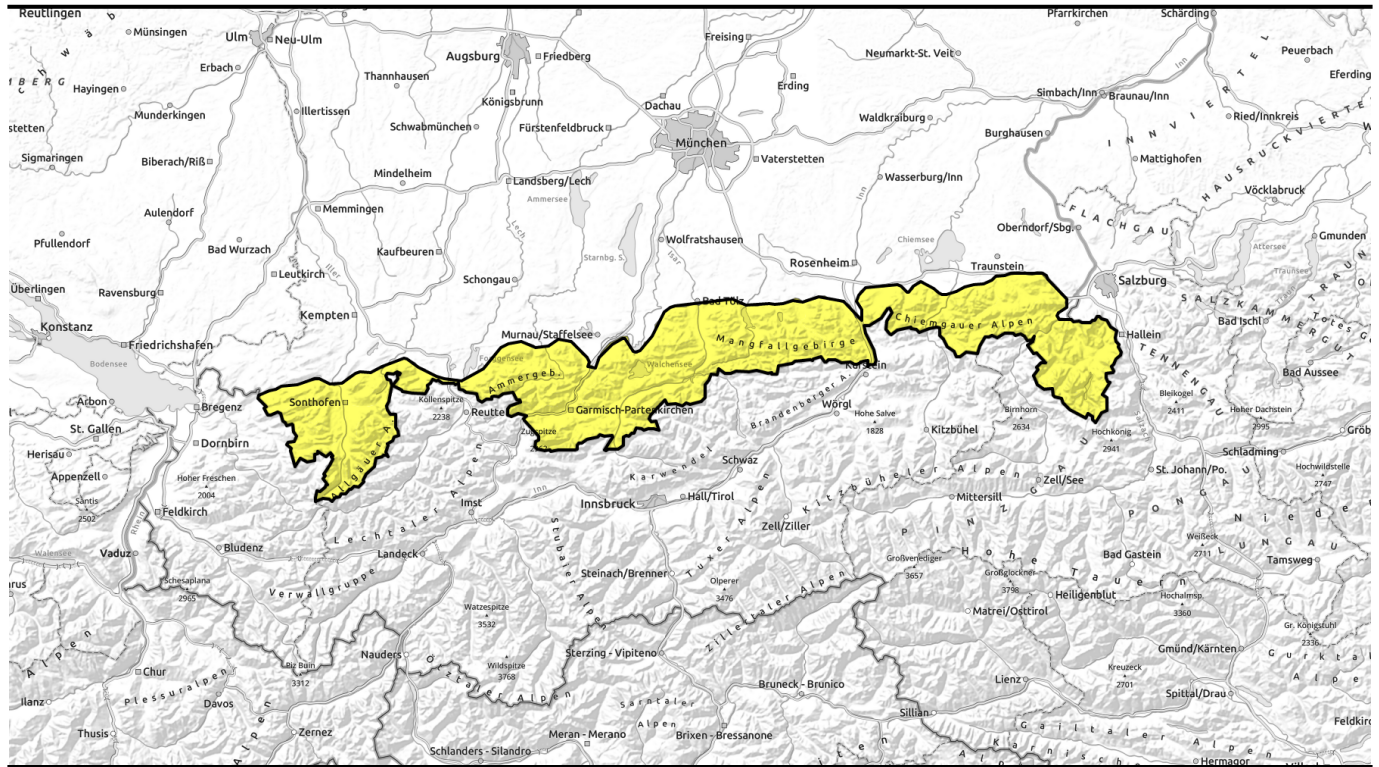


valid for: **Tuesday, 19.12.2023**



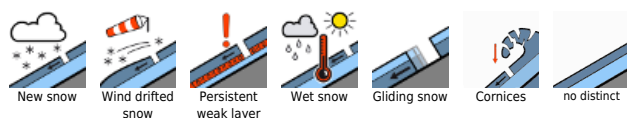
Naturally triggered avalanches possible on sunny slopes



Ammergauer Alpen, Bayerische Voralpen West, Bayerische Voralpen Mitte, Bayerische Voralpen Ost, Chiemgauer Alpen West, Chiemgauer Alpen Ost, Allgäuer Hauptkamm, Allgäuer Vorberge, Werdenfelser Alpen, Berchtesgadener Alpen



Avalanche problems



Danger ratings



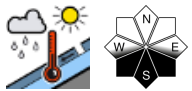
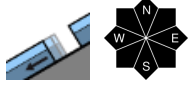
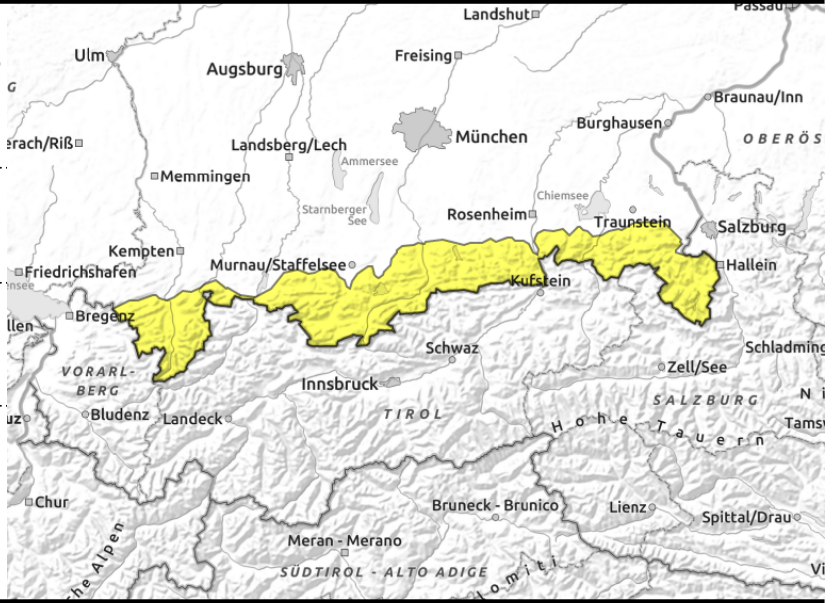
Expositions





valid for: **Tuesday, 19.12.2023**

Ammergauer Alpen, Bayerische Voralpen West, Bayerische Voralpen Mitte, Bayerische Voralpen Ost, Chiemgauer Alpen West, Chiemgauer Alpen Ost, Allgäuer Hauptkamm, Allgäuer Vorberge, Werdenfeller Alpen, Berchtesgadener Alpen



Increasing gliding snow activity

Avalanche danger is moderate. Main problem: gliding snow. Small-to-medium glide-snow avalanches can release naturally at any time of day, esp. on very steep wooded and grass-covered slopes. Furthermore, the snowpack will become wetter in the early part of the day, making naturally triggered small loose-snow avalanches possible on extremely steep south-facing slopes. Old snowdrifts can in isolated cases be triggered in steep ridgeline terrain and in wind-loaded gullies and bowls at high altitudes by large additional loading, small-to-medium releases. Caution urged in transitions from shallow to deeper snow, esp. in NE/S/SW facing terrain. Beware breaking cornices!

Snowpack structure

The snowpack base is moist/wet up to high altitudes, at low altitudes it is melt-freeze encrusted as a result of nocturnal outgoing radiation. Combined with warm air, the sun can still moisten the snowpack up to high altitudes. In extremely steep rocky terrain, loose-snow avalanches can trigger naturally. Old snowdrifts at high altitudes are sometimes deposited atop soft layers, otherwise no striking weak layers in the snowpack are evident.

Outlook

Fresh snowfall and wind are forecast: avalanche danger levels will increase.

Translated by Jeffrey McCabe, www.creativtrans.com

Avalanche problems



Danger ratings



Expositions

