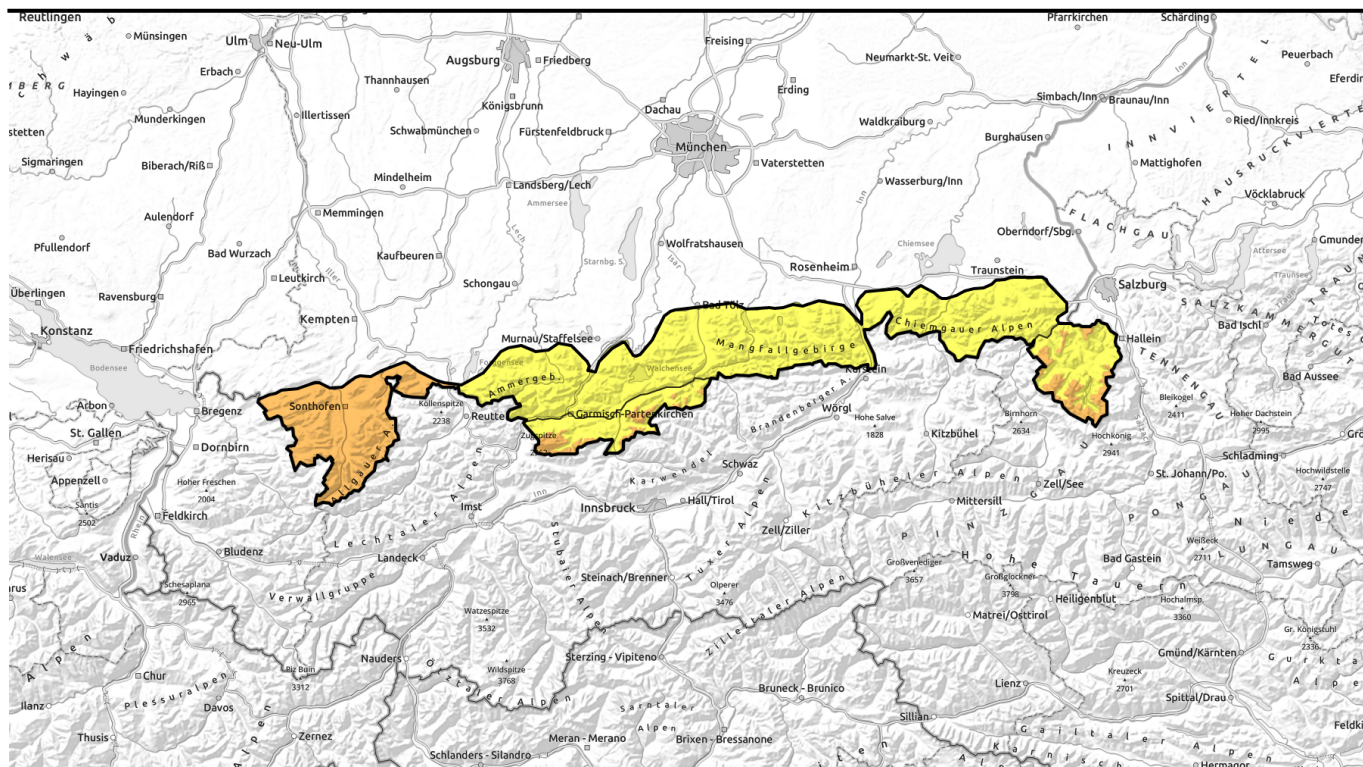


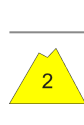





# valid for: **Sunday, 10.12.2023**



## Considerable avalanche danger regionally

	2000 m Werdenfeller Alpen, Berchtesgadener Alpen	
	Bayerische Voralpen Mitte, Bayerische Voralpen Ost, Chiemgauer Alpen West, Chiemgauer Alpen Ost, Bayerische Voralpen West, Ammergauer Alpen	
	Allgäuer Vorberge, Allgäuer Hauptkamm	

### Avalanche problems



### Danger ratings



### Expositions

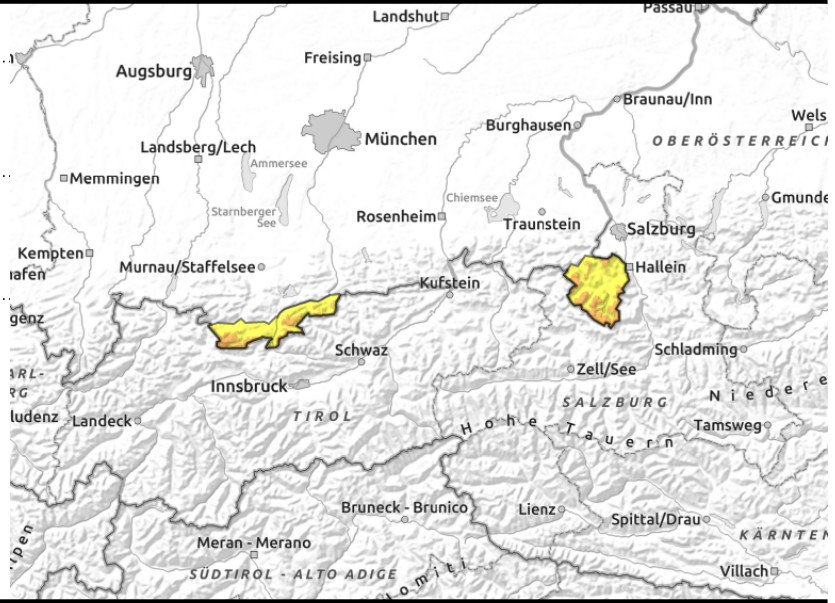
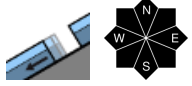
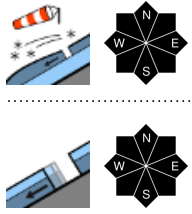


valid for: **Sunday, 10.12.2023**

**Werdenfeller Alpen, Berchtesgadener Alpen**



2000 m



**Stormy conditions: trigger-sensitive snowdrifts accumulating near to and distant from ridges**

Avalanche danger above 2000 m is considerable, below that altitude danger is moderate. Main problem: snowdrifts, often triggerable by 1 person. Danger zones occur near to and distant from ridges, behind protruberances, in gullies and bowls. Danger zones increase with ascending altitude. Slab avalanches can reach medium size.

Up to intermediate altitudes in all aspects in steep grassy slopes and forest clearances, small-to-medium glide-snow avalanches are possible. Glide cracks should be avoided. Also wet loose snow avalanches can trigger naturally in steep rocky terrain.

**Snowpack structure**

Stormy winds on Saturday night, some fresh snow will form new drifts, deposited atop a loose surface or older drifts, thus prone to triggering. At low altitudes the snow will fall on a moist surface, can bond better. The rain up to 2000 m will begin at night, weekend the snowpack, making loose-snow avalanches possible. The moist layer at ground level is wetter, favouring gliding snowpack movements.

**Outlook**

Avalanche danger remains upright due to higher temperatures, wind and precipitation.

**Avalanche problems**



**Danger ratings**

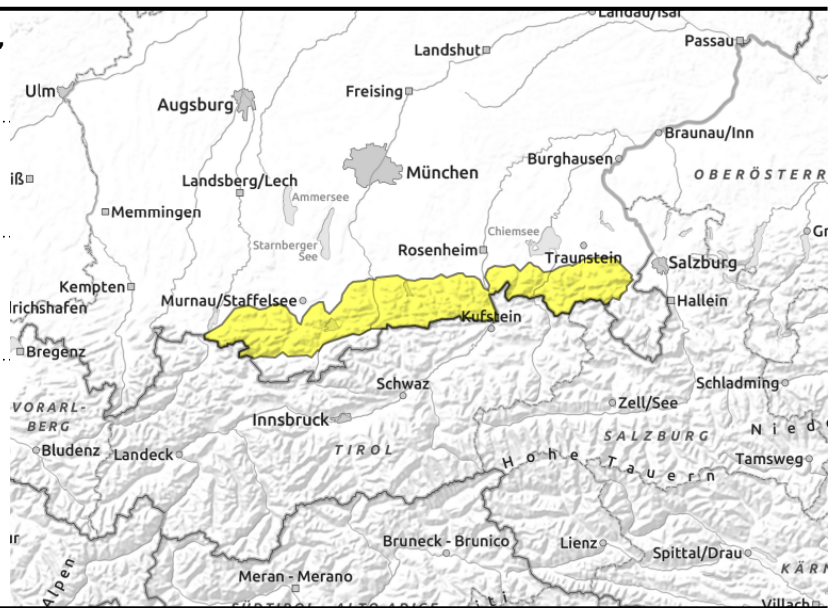
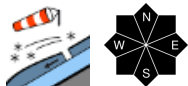
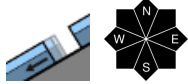


**Expositions**



valid for: **Sunday, 10.12.2023**

**Bayerische Voralpen Mitte, Bayerische Voralpen Ost, Chiemgauer Alpen West, Chiemgauer Alpen Ost, Bayerische Voralpen West, Ammergauer Alpen**



## Rainfall on Saturday night: favours wet-snow and glide-snow avalanches

Avalanche danger is moderate. Main problem: gliding snow. Up to summit levels on steep grassy slopes and in steep forest clearances in all aspects, small-to-medium glide-snow avalanches can trigger naturally. Glide cracks are danger signs. Wet-snow avalanches can trigger naturally in steep rocky terrain.

Above the treeline, small drifts can be prone to triggering. Danger zones occur in all aspects near to and distant from ridgelines, increase in size and frequency with ascending altitude.

### Snowpack structure

Rain impact on Saturday night will weaken the snowpack, wet-snow avalanches can trigger. The moist layer at ground level is wetter, favouring gliding snowpack movements. Stormy winds will accompany the snowfall, new drifts will accumulate, generally bonding well, but deteriorating with ascending altitude.

### Outlook

Avalanche danger will increase due to higher temperatures, wind and precipitation.

#### Avalanche problems



#### Danger ratings

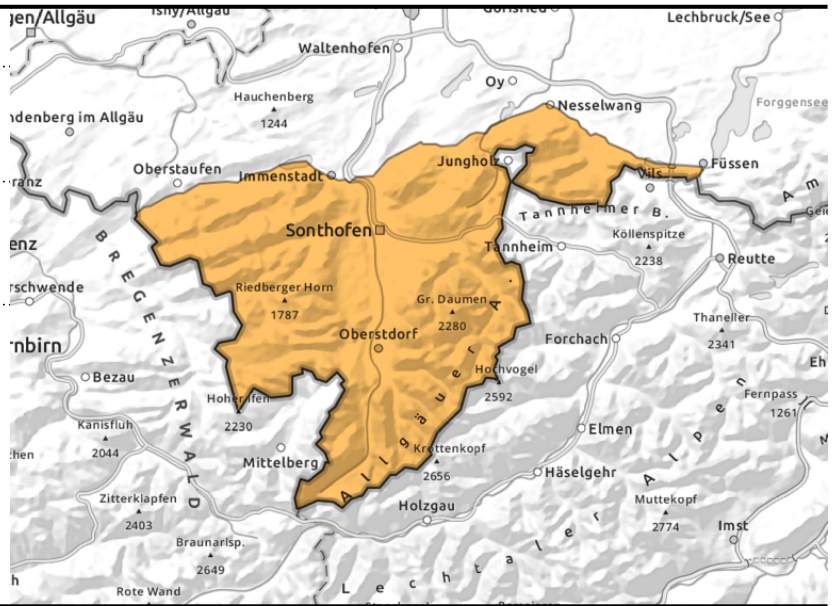
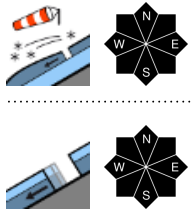


#### Expositions



valid for: **Sunday, 10.12.2023**

**Allgäuer Vorberge, Allgäuer Hauptkamm**



**Trigger-sensitive drifts near to and distant from ridges; wet-snow and glide-snow due to rain**

Avalanche danger is moderate. Main problem: gliding snow. Up to summit levels on steep grassy slopes and in steep forest clearances in all aspects, small-to-medium glide-snow avalanches can trigger naturally. Glide cracks are danger signs. Wet-snow avalanches can trigger naturally in steep rocky terrain.

Up to intermediate altitudes in all aspects in steep grassy slopes and forest clearances, small-to-medium glide-snow avalanches are possible. Glide cracks should be avoided. Also wet loose snow avalanches can trigger naturally in steep rocky terrain.

**Snowpack structure**

Stormy winds on Saturday night, some fresh snow will form new drifts, deposited atop a loose surface or older drifts, thus prone to triggering. At low altitudes the snow will fall on a moist surface, can bond better. The rain up to 2000 m will begin at night, weekend the snowpack, making loose-snow avalanches possible. The moist layer at ground level is wetter, favouring gliding snowpack movements.

**Outlook**

Avalanche danger remains upright due to higher temperatures, wind and precipitation.

Translated by Jeffrey McCabe, [www.creativtrans.com](http://www.creativtrans.com)

**Avalanche problems**



**Danger ratings**



**Expositions**

