

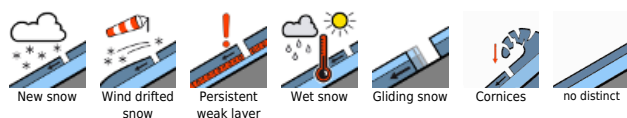
Snowdrifts at high altitudes / Glide-snow at low altitudes



Allgäuer Vorberge, Ammergauer Alpen, Bayerische Voralpen West, Bayerische Voralpen Mitte, Bayerische Voralpen Ost, Chiemgauer Alpen West, Chiemgauer Alpen Ost, Allgäuer Hauptkamm, Werdenfeller Alpen, Berchtesgadener Alpen



Avalanche problems



Danger ratings



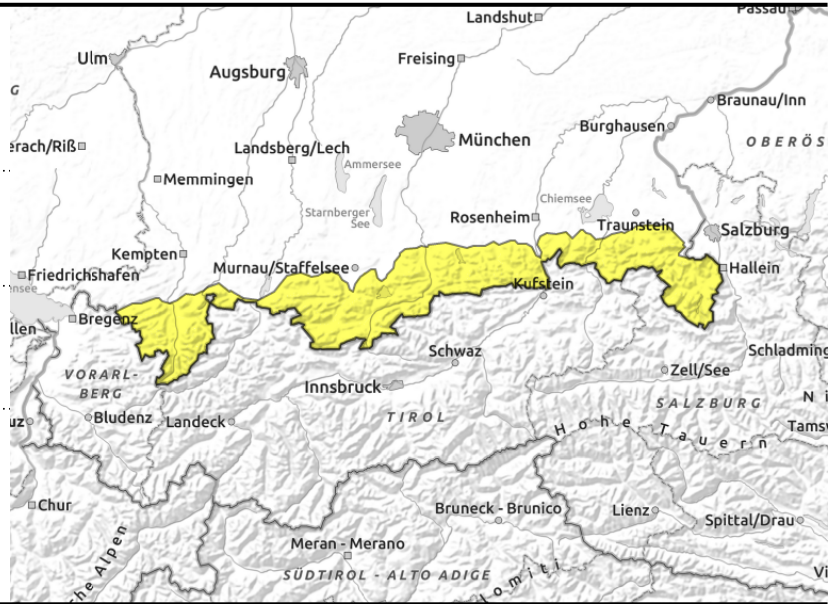
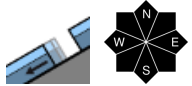
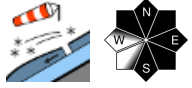
Expositions





valid for: **Saturday, 09.12.2023**

Allgäuer Vorberge, Ammergauer Alpen, Bayerische Voralpen West, Bayerische Voralpen Mitte, Bayerische Voralpen Ost, Chiemgauer Alpen West, Chiemgauer Alpen Ost, Allgäuer Hauptkamm, Werdenfeller Alpen, Berchtesgadener Alpen



Avoid ridgeline snowdrifts: prone to triggering

Avalanche danger in the Bavarian Alps is moderate. Main problem: the snowdrift accumulations which in places can be triggered even by minimum additional loading (1 person). Danger zones occur on steep ridgelines slopes in NW/E/S aspects, they increase both in size and in frequency with ascending altitude.

On steep grass-covered slopes and in wooded zones in all aspects, glide-snow avalanches can trigger naturally. Glide cracks are indicators of threatening danger.

Snowpack structure

Amid gusty SW winds, fresh snowdrifts have accumulated which are very prone to triggering since they will be deposited atop soft powder snow, also atop surface hoar. The above-average snow depths have settled well and are stable. At intermediate and low altitudes the snowpack base is frequently wet; the result: it glides over the grassy slopes.

Outlook

Storm-strength winds on Sunday will intensify the snowdrift problem at high altitudes.

Translated by Jeffrey McCabe, www.creativtrans.com

Avalanche problems



Danger ratings



Expositions

