

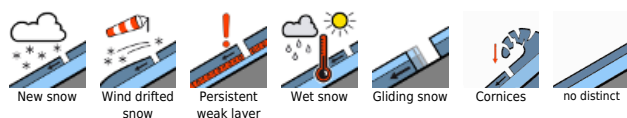
## Fresh snowdrifts prone to triggering



Allgäuer Vorberge, Allgäuer Hauptkamm, Ammergauer Alpen, Werdenfeller Alpen, Bayerische Voralpen West, Bayerische Voralpen Mitte, Bayerische Voralpen Ost, Chiemgauer Alpen West, Berchtesgadener Alpen, Chiemgauer Alpen Ost



### Avalanche problems



### Danger ratings

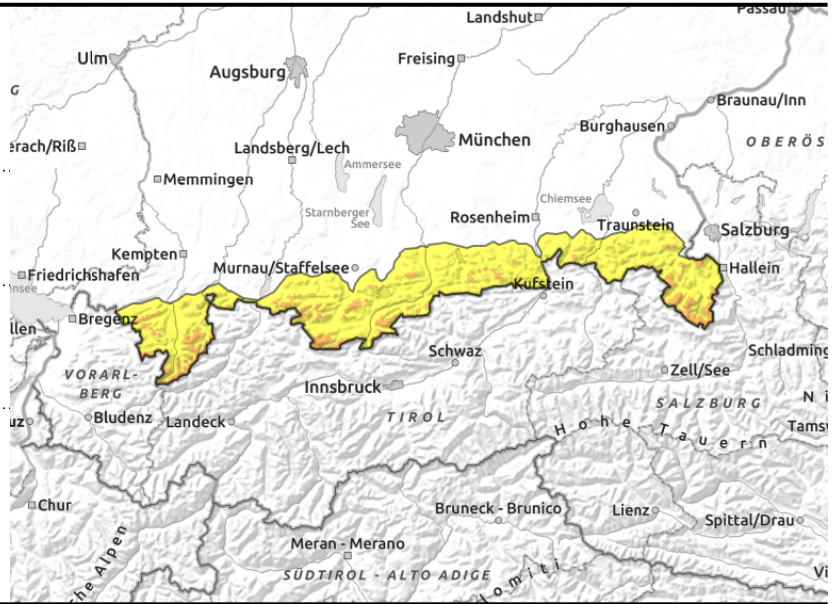
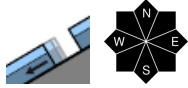
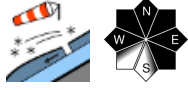


### Expositions



valid for: **Monday, 04.12.2023**

**Allgäuer Vorberge, Allgäuer Hauptkamm, Ammergauer Alpen, Werdenfelser Alpen, Bayerische Voralpen West, Bayerische Voralpen Mitte, Bayerische Voralpen Ost, Chiemgauer Alpen West, Berchtesgadener Alpen, Chiemgauer Alpen Ost**



## Slab avalanches easily triggered

Above the timberline avalanche danger is considerable, below that altitude danger is moderate. Main problem: freshly generated snowdrift accumulations can be triggered even by one sole person. Danger zones occur on steep ridgeline slopes on W/N/SE facing slopes, behind protruberances, in gullies and bowls. Size and frequency of danger zones increase with ascending altitude and as the day progresses. Slab avalanches can reach medium size. At intermediate altitudes, glide-snow avalanches can trigger naturally on steep grass-covered slopes and in forest lanes. Glide cracks are indicators of danger.

## Snowpack structure

Widespread there has been 50-100 cm of loose snow deposited atop a stable old snowpack. The snow has settled somewhat but can still be transported by the intensifying southerly winds. Wide-ranging transport occurs most in the typical foehn lands. The drifts are being deposited on loose snow and, in places, atop surface hoar: thus, very prone to triggering. There are also weak layers inside the snowpack from place to place, but no major fracture propagation has been observed in the last few days. At intermediate altitudes the snowpack base is often wet; gliding movements are the consequence. Overall snow depths are significantly above average for this juncture of the season.

## Outlook

During the next few days it will turn warmer. Precipitation is anticipated. At low altitudes the wet snow will become a problem

Translated by Jeffrey McCabe, [www.creativtrans.com](http://www.creativtrans.com)

### Avalanche problems



### Danger ratings



### Expositions

