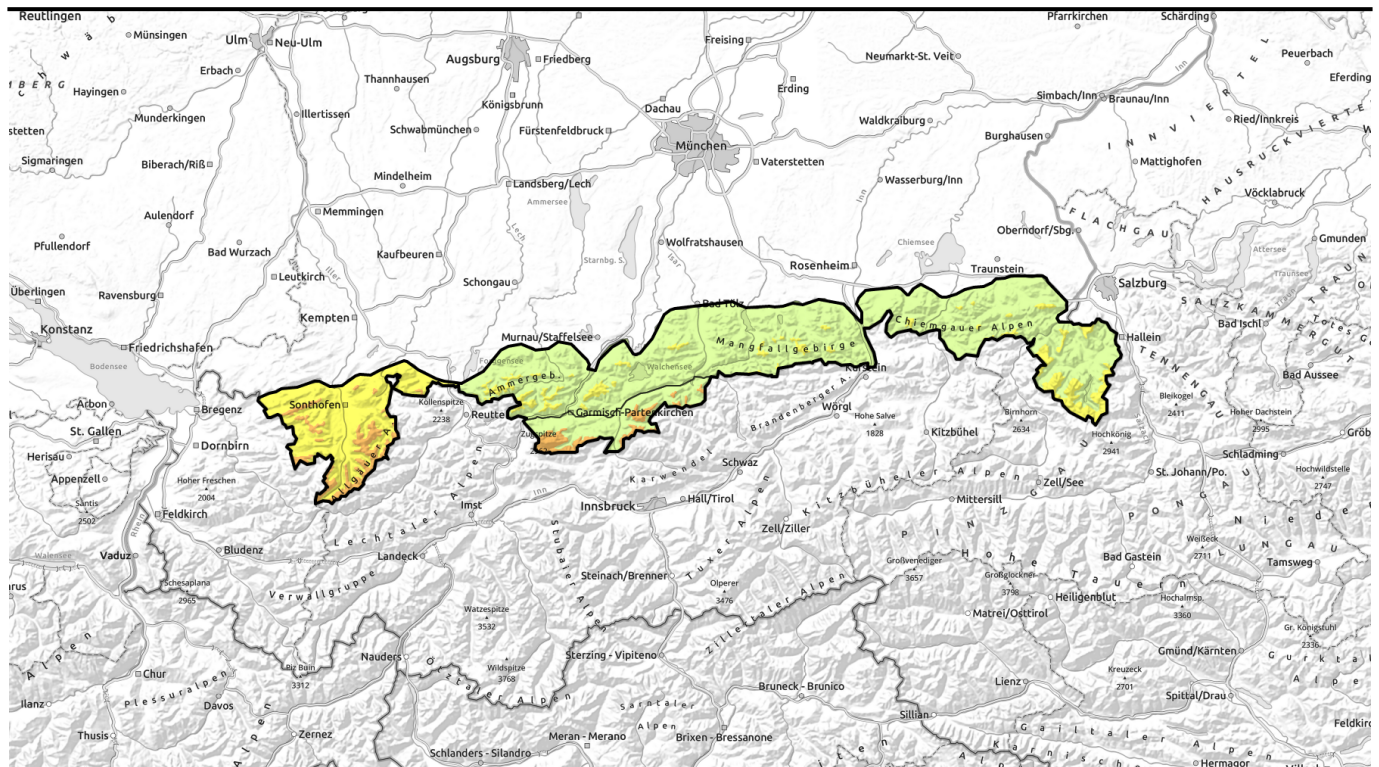








Avalanche report 29.11.2023 through 01.12.2023



Onset of winter with storm-strength winds

	forestline	Allgäuer Vorberge, Allgäuer Hauptkamm	
	1500 m	Ammergauer Alpen, Bayerische Voralpen Mitte, Bayerische Voralpen Ost, Chiemgauer Alpen West, Chiemgauer Alpen Ost, Berchtesgadener Alpen, Bayerische Voralpen West	
	1500 m	Werdenfelser Alpen	

Avalanche problems



Danger ratings

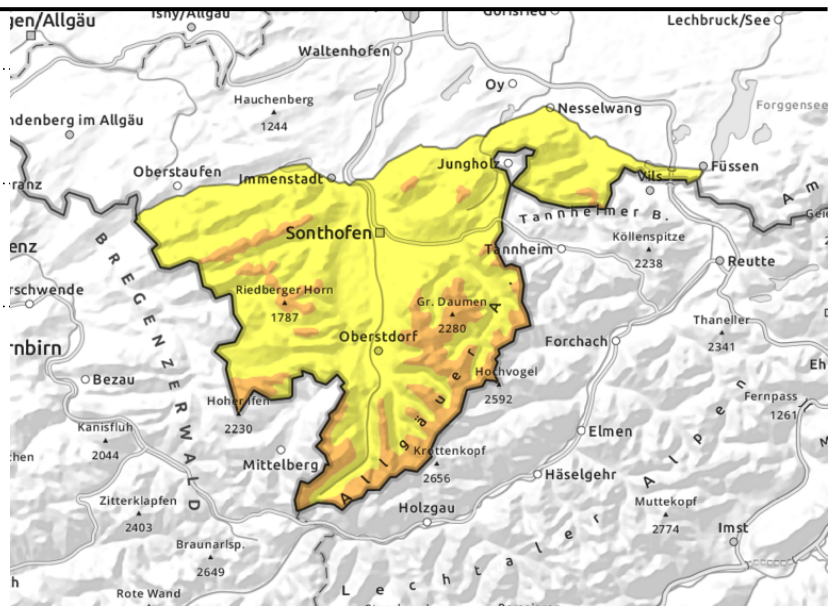
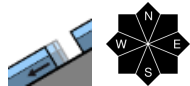
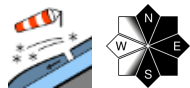


Expositions



Avalanche report 29.11.2023 through 01.12.2023

Allgäuer Vorberge, Allgäuer Hauptkamm



Far-reaching snowdrifts on east-facing slopes

Considerable avalanche danger prevails above the timberline. The main problem: freshly generated snowdrift accumulations which can be triggered as a slab avalanche even by one person. Avalanche prone locations occur on steep N-E-S facing ridgeline slopes and in gullies and bowls. At high altitudes the releases can grow to large size.

At intermediate altitudes, isolated glide-snow avalanches can trigger naturally. They are possible on steep grass-covered slopes in all aspects and can reach medium size.

Snowpack structure

The snow is distributed highly irregularly. Strong-velocity westerly winds have transported the snow massively and deposited it in wind-protected areas. In gullies and bowls and on steep ridgeline slopes, particularly at high altitudes, snowdrift accumulations of great magnitude have been formed. Inside them are often trigger-sensitive intermediate layers. At high altitudes, furthermore, there are frequently layers of faceted crystals near ground level. At intermediate altitudes the ground beneath the snow is frequently warm, and the snowpack is thawing from below. The consequence: a moist snowpack base and gliding snow masses.

Outlook

Repeated bouts of snowfall are anticipated. The avalanche situation will remain tense to start with. The next Avalanche Bulletin will be published on Friday, 1 December.

Avalanche problems



Danger ratings

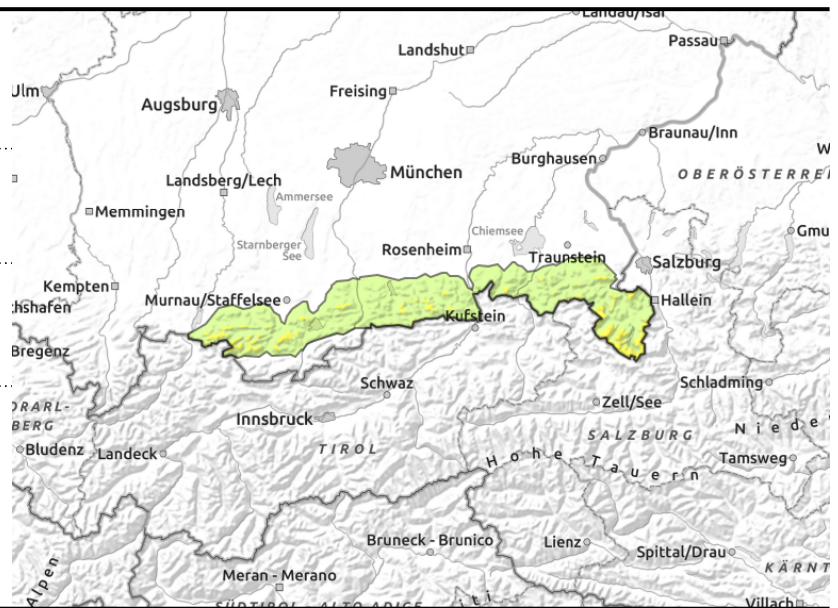
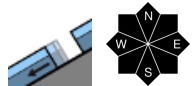
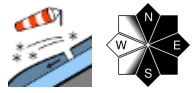


Expositions



Avalanche report **29.11.2023** through **01.12.2023**

Ammergauer Alpen, Bayerische Voralpen Mitte, Bayerische Voralpen Ost, Chiemgauer Alpen West, Chiemgauer Alpen Ost, Berchtesgadener Alpen, Bayerische Voralpen West



Avoid the snowdrifts!

Above 1500m, avalanche danger is moderate, below that altitude danger is low. The main problem: freshly generated snowdrifts which can be triggered as a slab avalanche even by one person.

Avalanche prone locations occur on steep N-E-S facing ridgeline slopes and in gullies and bowls. At high altitudes the releases can grow to large size.

At intermediate altitudes, isolated glide-snow avalanches can trigger naturally. They are possible on steep grass-covered slopes in all aspects.

Snowpack structure

The snow is distributed highly irregularly. Strong-velocity westerly winds have transported the snow massively and deposited it in wind-protected areas. In gullies and bowls and on steep ridgeline slopes, particularly at high altitudes, snowdrift accumulations of great magnitude have been formed. Inside them are often trigger-sensitive intermediate layers. At high altitudes, furthermore, there are frequently layers of faceted crystals near ground level. At intermediate altitudes the ground beneath the snow is frequently warm, and the snowpack is thawing from below. The consequence: a moist snowpack base and gliding snow masses.

Outlook

Repeated bouts of snowfall are anticipated. The avalanche situation will remain tense to start with. The next Avalanche Bulletin will be published on Friday, 1 December.

Avalanche problems



Danger ratings

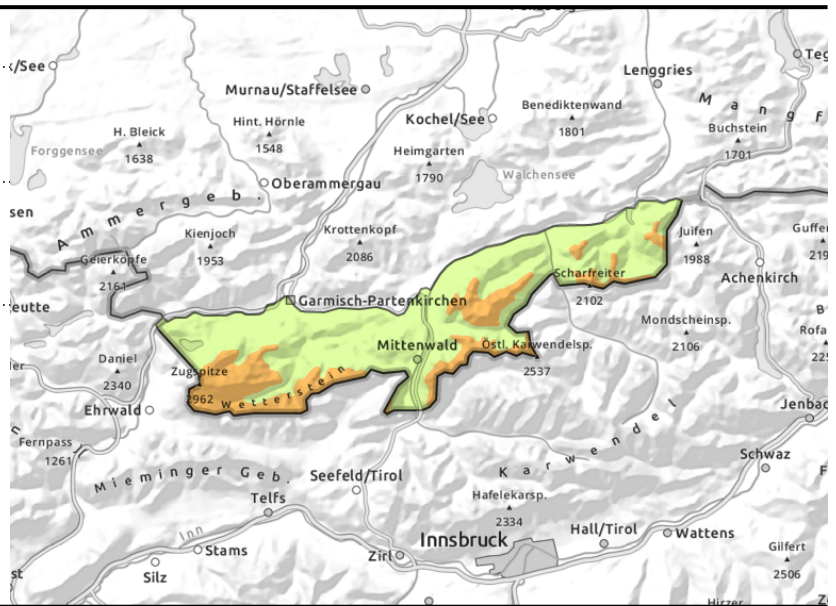
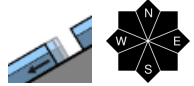
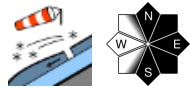
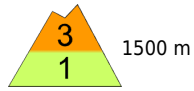


Expositions



Avalanche report **29.11.2023** through **01.12.2023**

Werdenfeller Alpen



Large-sized avalanches possible at high altitudes

Above 1500m, avalanche danger is moderate, below that altitude danger is low. The main problem: freshly generated snowdrifts which can be triggered as a slab avalanche even by one person.

Avalanche prone locations occur on steep N-E-S facing ridgeline slopes and in gullies and bowls. At high altitudes the releases can grow to large size.

At intermediate altitudes, isolated glide-snow avalanches can trigger naturally. They are possible on steep grass-covered slopes in all aspects.

Snowpack structure

The snow is distributed highly irregularly. Strong-velocity westerly winds have transported the snow massively and deposited it in wind-protected areas. In gullies and bowls and on steep ridgeline slopes, particularly at high altitudes, snowdrift accumulations of great magnitude have been formed. Inside them are often trigger-sensitive intermediate layers. At high altitudes, furthermore, there are frequently layers of faceted crystals near ground level. At intermediate altitudes the ground beneath the snow is frequently warm, and the snowpack is thawing from below. The consequence: a moist snowpack base and gliding snow masses.

Outlook

Repeated bouts of snowfall are anticipated. The avalanche situation will remain tense to start with. The next Avalanche Bulletin will be published on Friday, 1 December.

Translated by Jeffrey McCabe, www.creativtrans.com

Avalanche problems



Danger ratings



Expositions

