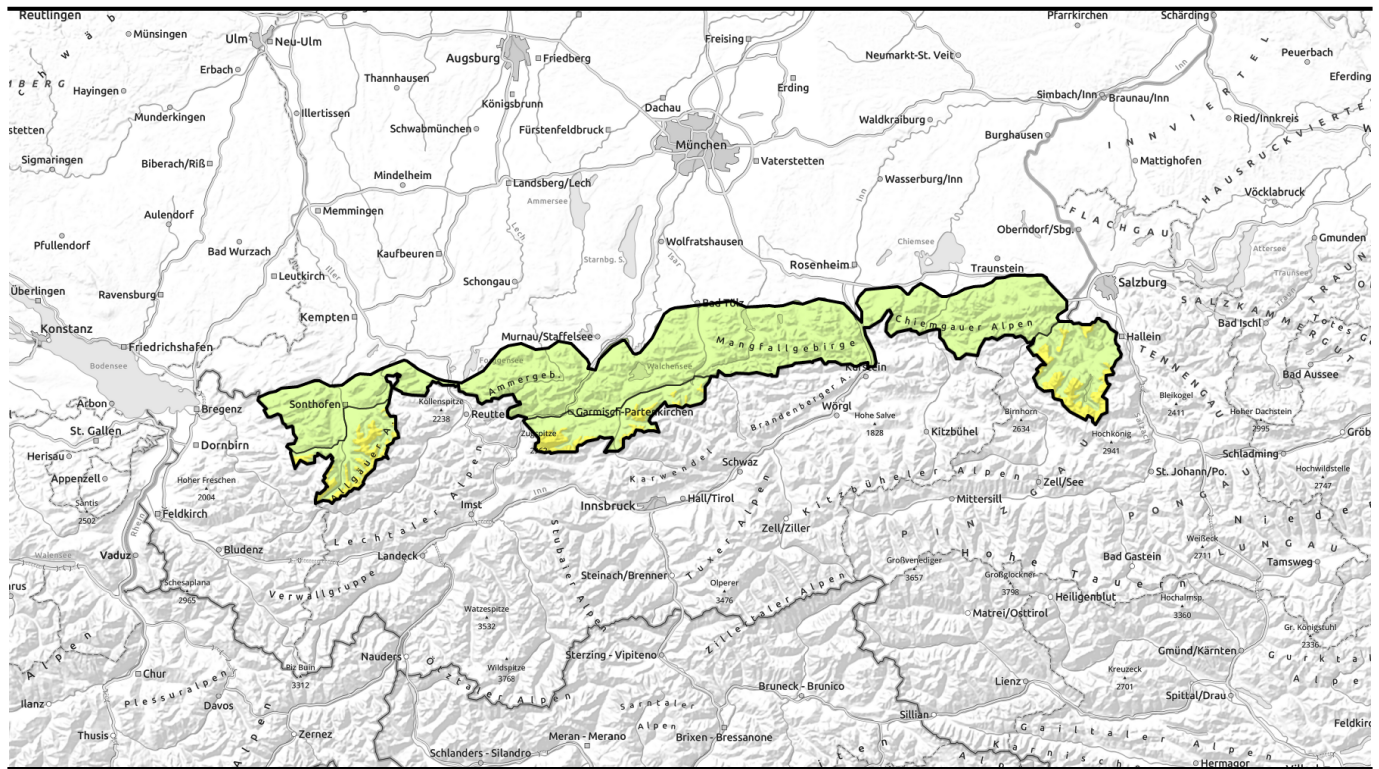
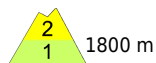


Avalanche report for Tuesday, 25.04.2023



Problem of wet snow diminishes. Heed fresh trigger sensitive snowdrifts at high altitudes



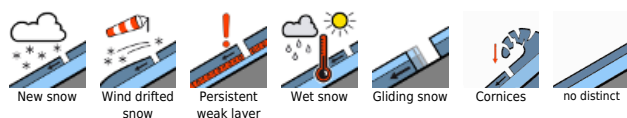
Allgäuer Hauptkamm, Werdenfelser Alpen, Berchtesgadener Alpen



Allgäuer Vorberge, Ammergauer Alpen, Bayerische Voralpen West, Bayerische Voralpen Mitte, Bayerische Voralpen Ost, Chiemgauer Alpen West, Chiemgauer Alpen Ost



Avalanche problems



Danger ratings

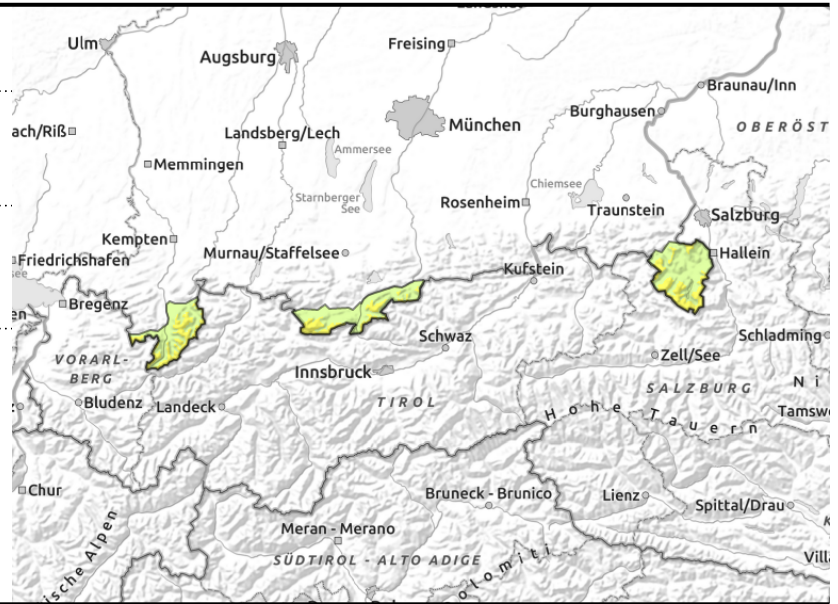
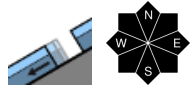
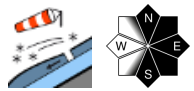


Expositions



Avalanche report for Tuesday, 25.04.2023

Allgäuer Hauptkamm, Werdenfelser Alpen, Berchtesgadener Alpen



Fresh snowdrift accumulations at high altitudes are prone to triggering

Avalanche danger above 1800 m is moderate, below that altitude danger is low. Main problem: fresh snowdrifts. Danger zones are found in steep ridgeline terrain in N/E/S aspects as well as in freshly wind-loaded gullies and bowls. Even a single skier can trigger small slab avalanches. The perils of being forced to take a fall in steep terrain exceed those of being buried in snow masses.

Wherever there is still enough snow, medium-sized glide snow avalanches can release spontaneously in steep terrain at any time.

In steep rocky terrain the new fallen snow can release in the form of small loose snow avalanches.

Snowpack structure

In the Bavarian Alps the snowpack has strongly diminished and is completely soaked even up to highest altitudes. By Tuesday evening snow showers will have deposited a bit of new snow which will be transported by strong northwesterly wind, in particular at higher altitudes. At high altitudes small snowdrift accumulations are generated which can be prone to triggering. At intermediate altitudes the small quantities of new snow have been deposited directly on the warm ground which becomes rapidly bare again, or they bond well with the wet old snowpack.

Outlook

The weather will stay variable and cold. Avalanche danger levels are not expected to change significantly.

Avalanche problems



Danger ratings

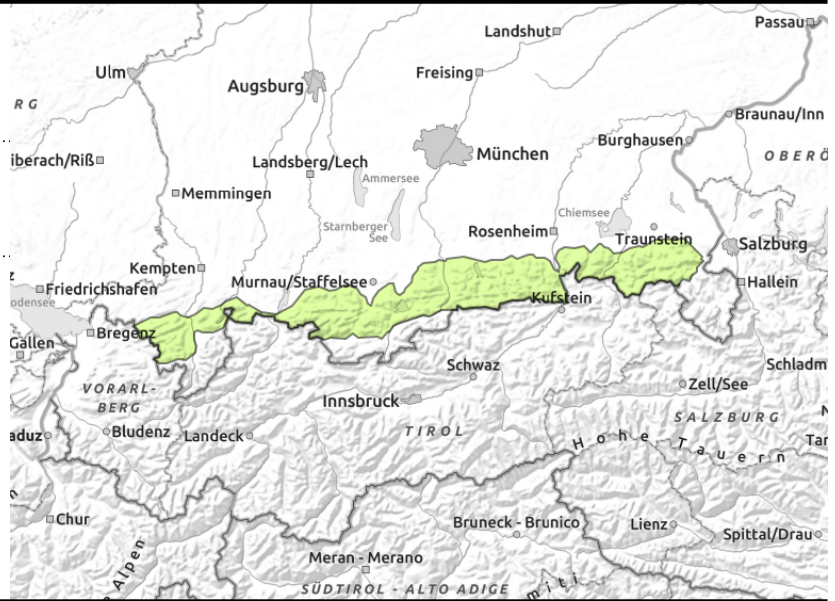
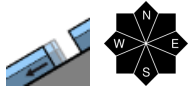


Expositions



Avalanche report for Tuesday, 25.04.2023

Allgäuer Vorberge, Ammergauer Alpen, Bayerische Voralpen West, Bayerische Voralpen Mitte, Bayerische Voralpen Ost, Chiemgauer Alpen West, Chiemgauer Alpen Ost



On hiking trails beware of the danger of residual snow higher up gliding over the ground!

Avalanche danger is generally low. Glide snow is a problem. Wherever there is still sufficient snow, it can be expected that mostly small avalanches trigger naturally in steep terrain at anytime which will slide over the smooth ground.

In steep rocky terrain the small quantities of new fallen snow can release in the form of small loose snow slides.

Snowpack structure

In the Bavarian Alps the snowpack has strongly diminished and is completely soaked even at higher altitudes. By Tuesday evening snow showers will have deposited a bit of new snow which will be transported by strong northwesterly wind, in particular at higher altitudes. The small quantities of new snow have been deposited directly on the warm ground which becomes rapidly bare again, or they bond well with the wet old snowpack.

Outlook

The weather will stay variable and cold. Avalanche danger levels are not expected to change significantly.

Translated by Jeffrey McCabe, www.creativtrans.com

Avalanche problems



Danger ratings



Expositions

