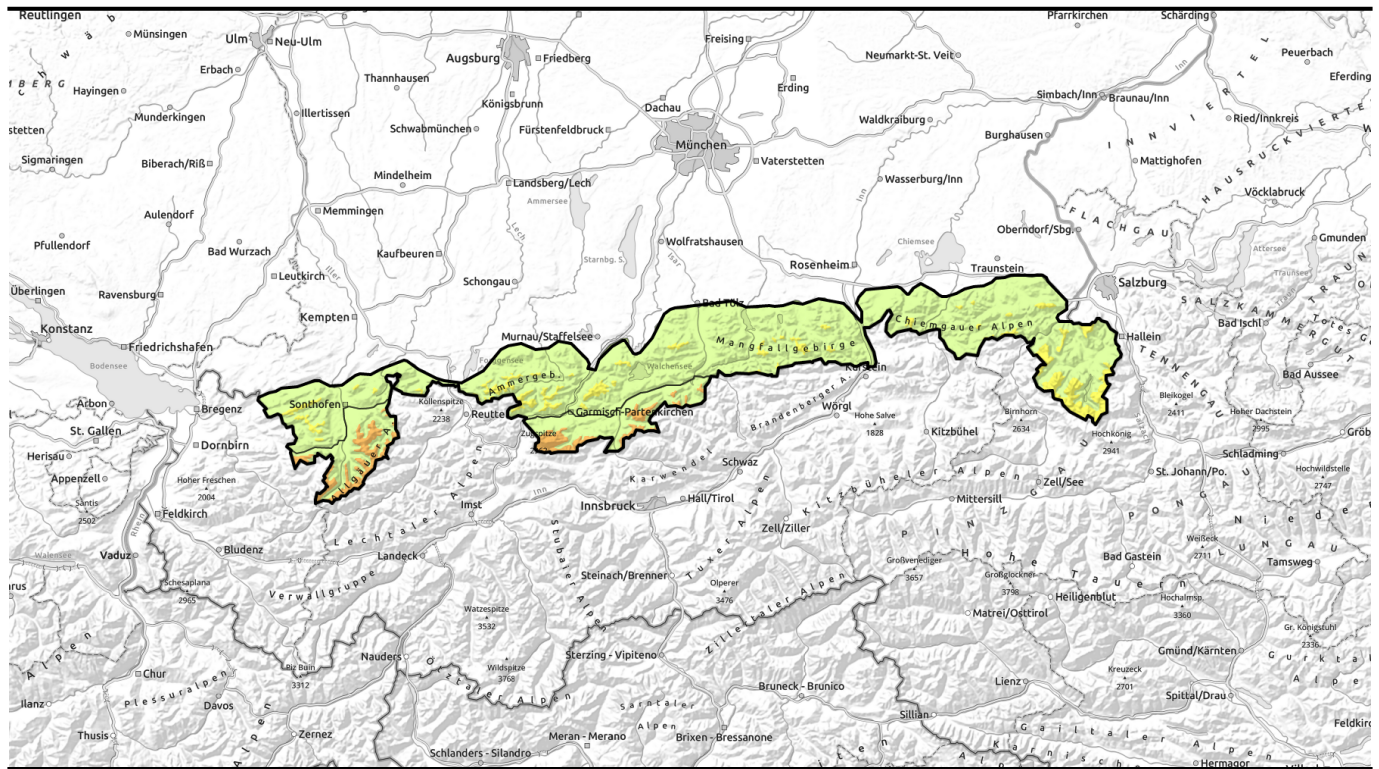


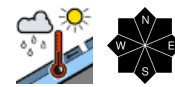
# Avalanche report for Monday, 24.04.2023



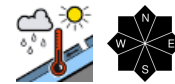
## Spontaneously triggered wet avalanches!



Werdenfeller Alpen, Allgäuer Hauptkamm



Allgäuer Vorberge, Bayerische Voralpen West, Bayerische Voralpen Mitte, Bayerische Voralpen Ost, Chiemgauer Alpen West, Chiemgauer Alpen Ost, Berchtesgadener Alpen, Ammergauer Alpen



### Avalanche problems



### Danger ratings

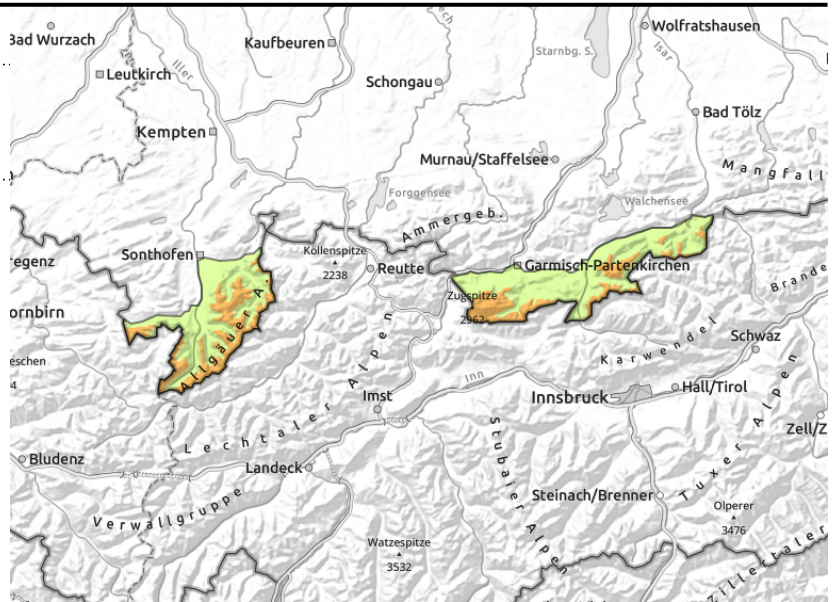
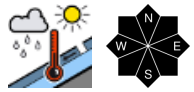
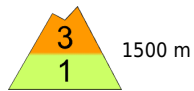


### Expositions



# Avalanche report for Monday, 24.04.2023

## Werdenfeller Alpen, Allgäuer Hauptkamm



## Beware of wet avalanches releasing above you - also on hiking trails

Avalanche danger above 1500 m is considerable, below that altitude danger is low. Wet snow is a problem. Wherever there is still enough snow, wet avalanches can be expected to trigger in very steep terrain at any time. Avalanches are medium-sized, although isolated avalanches can grow to large size. Most avalanche prone locations are located at elevations between 1600 m and 2200 m. Even on hiking trails over ground which is bare of snow, wet avalanches can be released on the slopes above them.

### Snowpack structure

In the Bavarian Alps the snowpack is completely wet even up to highest altitudes. Showery thunderstorms will locally lead to substantial ingress of rainwater, thus increasing spontaneous avalanche activity at such locations. At highest altitudes a few centimeters of snow will fall which will bond well with the superficially moist old snowpack surface. At low and intermediate altitudes the ground is now frequently bare of snow, particularly on sunny slopes.

### Outlook

The wet-snow problem will persist.

### Avalanche problems



### Danger ratings

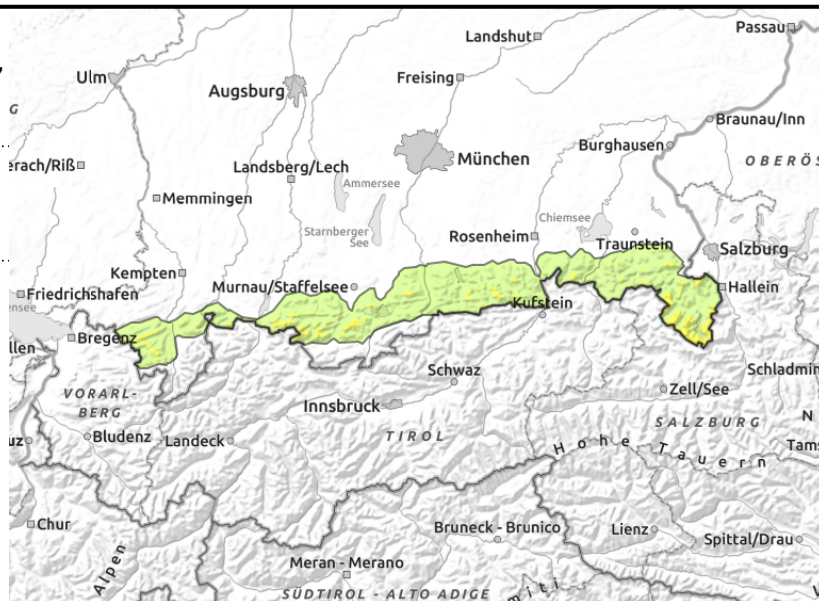
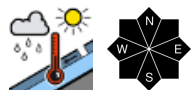
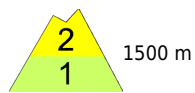


### Expositions



# Avalanche report for Monday, 24.04.2023

Allgäuer Vorberge, Bayerische Voralpen West, Bayerische Voralpen Mitte, Bayerische Voralpen Ost, Chiemgauer Alpen West, Chiemgauer Alpen Ost, Berchtesgadener Alpen, Ammergauer Alpen



## Beware of wet avalanches releasing above you - also on hiking trails

Avalanche danger above 1500 m is moderate, below that altitude danger is low. Wet snow is a problem. Wherever there is still enough snow, wet avalanches can be expected to trigger in very steep terrain at any time. Avalanches can grow to medium size. Even on hiking trails over ground which is bare of snow, wet avalanches can be released on the slopes above them.

### Snowpack structure

In the Bavarian Alps the snowpack is completely wet even up to highest altitudes. Showery thunderstorms will locally lead to substantial ingress of rainwater, thus increasing spontaneous avalanche activity at such locations. At highest altitudes a few centimeters of snow will fall which will bond well with the superficially moist old snowpack surface. At low and intermediate altitudes the ground is now frequently bare of snow, particularly on sunny slopes.

### Outlook

The wet-snow problem will persist.

Translated by Jeffrey McCabe, [www.creativtrans.com](http://www.creativtrans.com)

#### Avalanche problems



#### Danger ratings



#### Expositions

