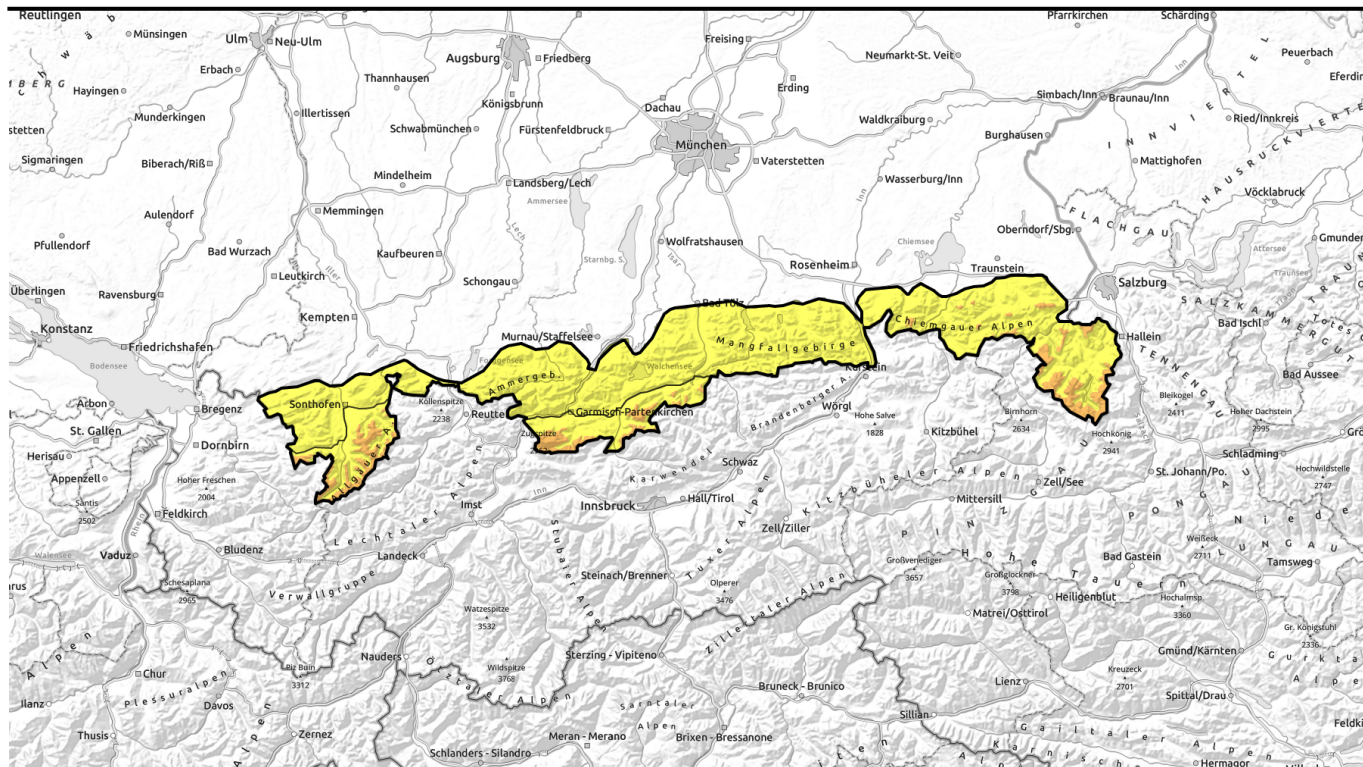


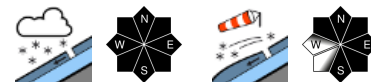
# Avalanche report for Friday, 14.04.2023



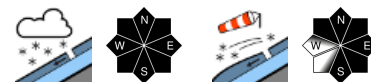
## Unfavorable avalanche situation with plenty of new snow and wind.



Allgäuer Hauptkamm, Werdenfeller Alpen, Berchtesgadener Alpen, Chiemgauer Alpen Ost, Chiemgauer Alpen West



Allgäu Vorberge, Ammergauer Alpen, Bayerische Voralpen West, Bayerische Voralpen Mitte, Bayerische Voralpen Ost



### Avalanche problems



### Danger ratings

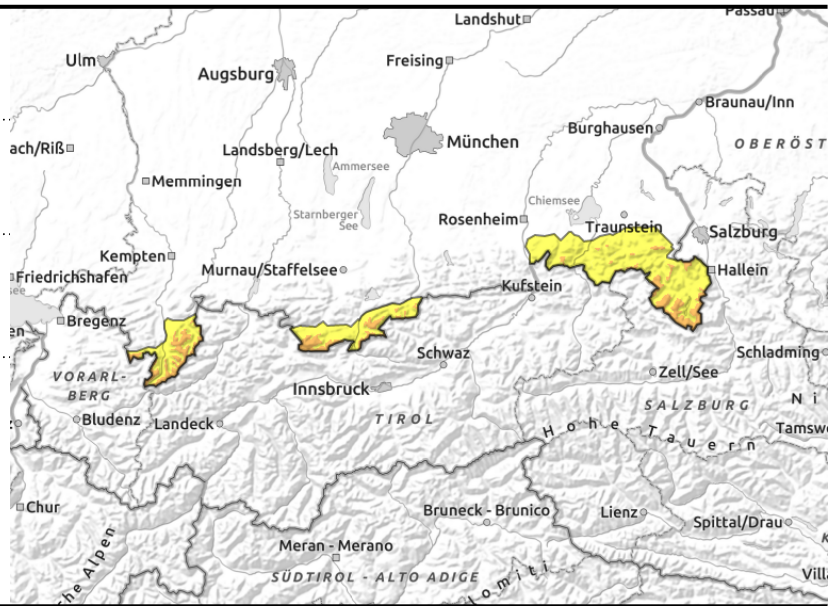
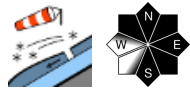


### Expositions



# Avalanche report for Friday, 14.04.2023

Allgäuer Hauptkamm, Werdenfeller Alpen,  
Berchtesgadener Alpen, Chiemgauer Alpen Ost,  
Chiemgauer Alpen West



## New snow and snowdrifts easily triggerable!

Avalanche danger above the timberline is considerable, below that altitude danger is moderate. Main problem: fresh snow. New snow and snowdrifts can be released by one sole skier on steep slopes in all expositions or trigger naturally in places. Avalanches are mostly medium-sized, but when sweeping along the thoroughly wet old snowpack at high altitude they can in isolated cases grow to large size. Avalanche prone locations are difficult to detect; number and size increase with ascending altitude during the course of the day.

In addition, medium-sized glide snow avalanches can start gliding over the ground on smooth grass-covered slopes and in sparsely wooded zones.

### Snowpack structure

Heavy new snowfall is deposited atop the snowdrifts of the last few days blankets them and makes them difficult to recognize. By Friday evening, new snow quantities of up to half a meter will have accumulated widespread since the beginning of the week. The new snow is transported slightly by moderate northerly to westerly winds and will bond. The new snow and the snowdrifts are partly deposited atop thin soft layers and are prone to triggering. At intermediate altitude the old snowpack is mostly wet down to the ground, whereas it is by and large compact and stable at high altitude.

### Outlook

The avalanche situation will remain tense due to further snowfall.

#### Avalanche problems



#### Danger ratings

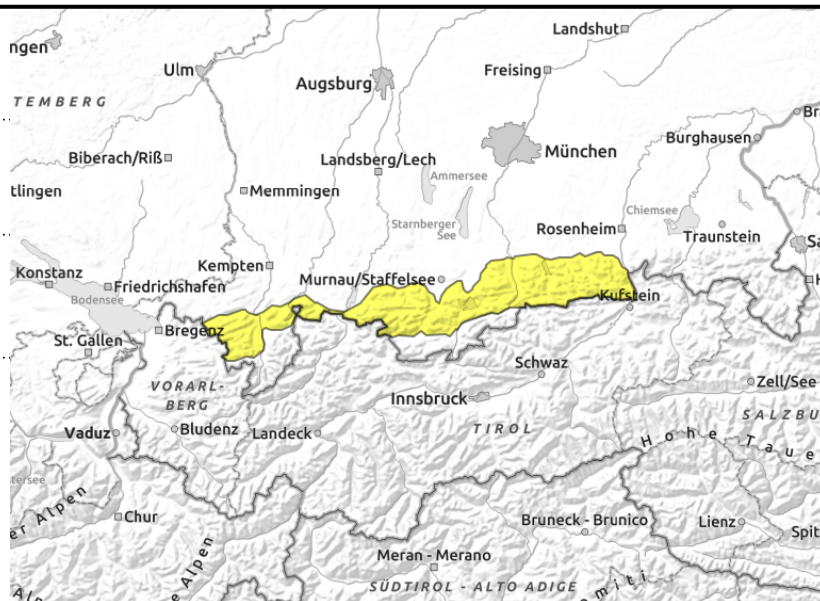
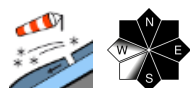
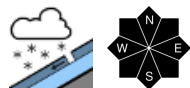


#### Expositions



# Avalanche report for Friday, 14.04.2023

**Allgäuer Vorberge, Ammergauer Alpen, Bayerische Voralpen West, Bayerische Voralpen Mitte, Bayerische Voralpen Ost**



## New snow and snowdrifts triggerable by one individual!

Avalanche is moderate. Main problem: fresh snow. New snow and snowdrifts can be released by one sole skier on steep slopes in all expositions or trigger naturally in places. Avalanches tend to be to medium-sized. Avalanche prone locations are difficult to detect; number and size increase with ascending altitude during the course of the day.

In addition, small to medium-sized glide snow avalanches can start gliding over the ground on smooth grass-covered slopes and in sparsely wooded zones.

### Snowpack structure

During Thursday night and during the day on Friday, 15 cm (in places even 30 cm) of fresh snow will fall and blanket the new snow and snowdrifts of the last few days. These are therefore difficult to detect. The new snow is transported slightly by moderate northerly to westerly winds and will bond. The new snow and the snowdrifts are partly deposited atop thin soft layers and are prone to triggering. The old snowpack is mostly thoroughly wet down to the ground. Below 1500 m altitude and on sunny slopes the new snow that fell during the last few days was mostly deposited atop a bare and warm ground and is moist down to the ground layer.

### Outlook

The avalanche situation will remain tense due to further snowfall.

Translated by Jeffrey McCabe, [www.creativtrans.com](http://www.creativtrans.com)

#### Avalanche problems



#### Danger ratings



#### Expositions

