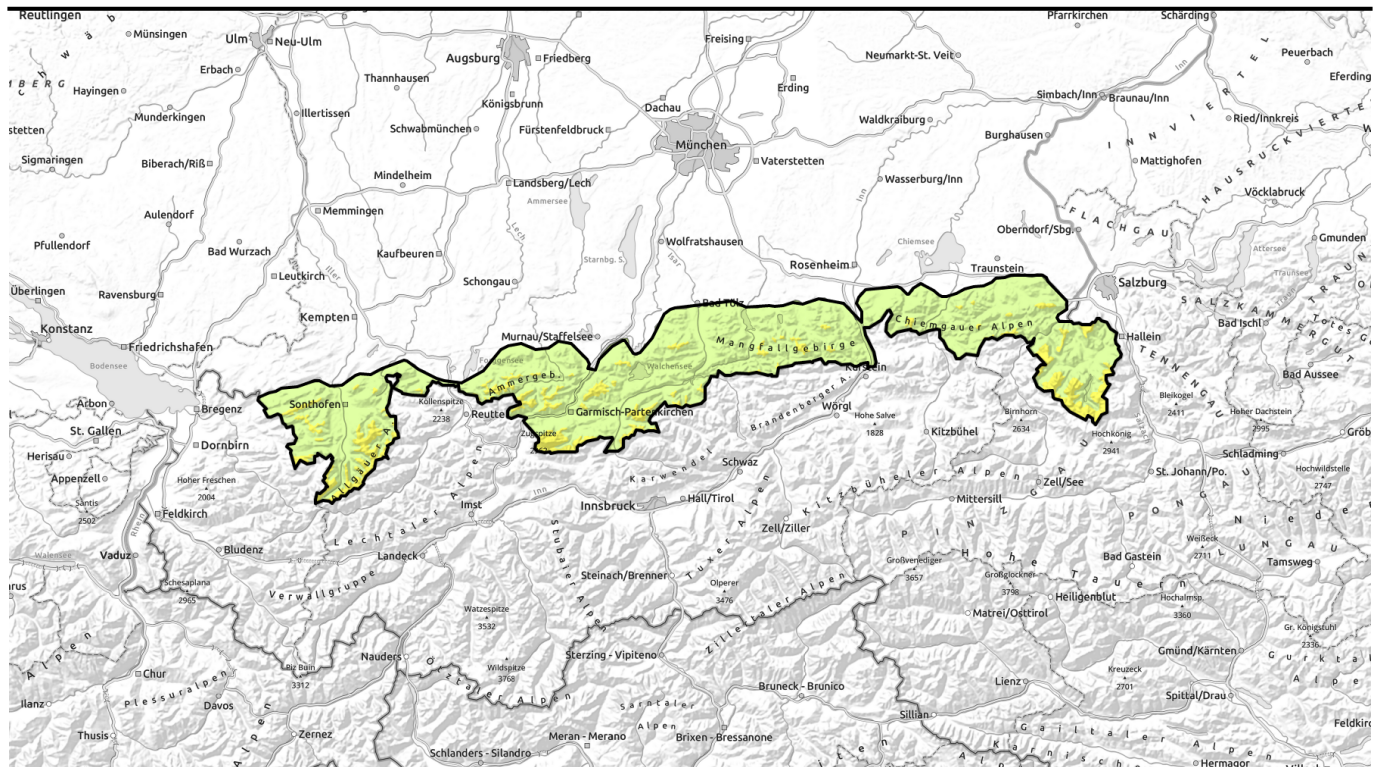


# Avalanche report for Wednesday, 12.04.2023

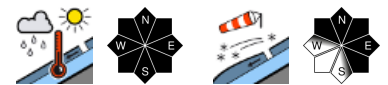


## Moderate avalanche danger widespread

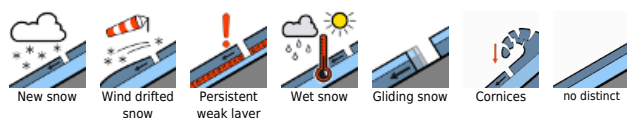


1400 m

Bayerische Voralpen West, Bayerische Voralpen Mitte, Bayerische Voralpen Ost, Chiemgauer Alpen West, Chiemgauer Alpen Ost, Allgäuer Vorberge, Ammergauer Alpen, Werdenfeller Alpen, Berchtesgadener Alpen, Allgäuer Hauptkamm



### Avalanche problems



### Danger ratings

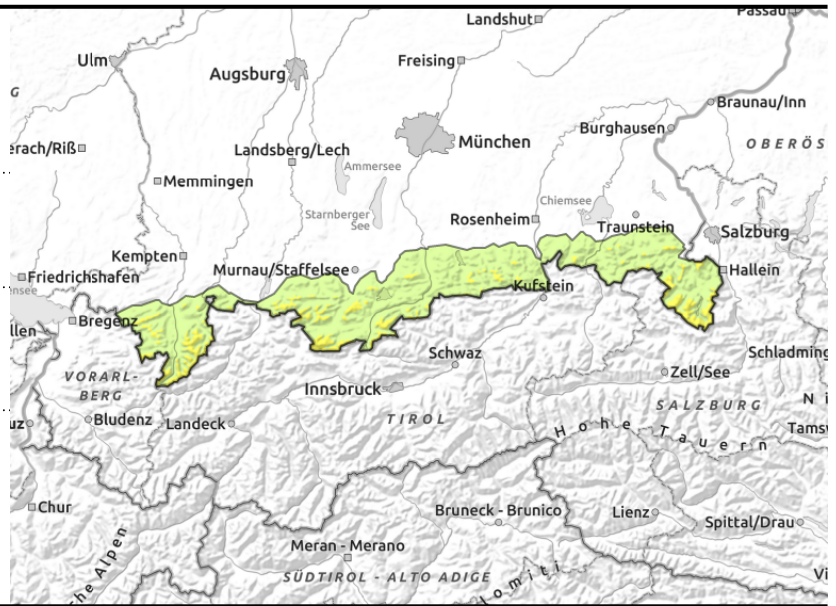
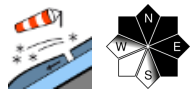
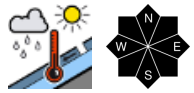


### Expositions



# Avalanche report for **Wednesday, 12.04.2023**

**Bayerische Voralpen West, Bayerische Voralpen Mitte, Bayerische Voralpen Ost, Chiemgauer Alpen West, Chiemgauer Alpen Ost, Allgäuer Vorberge, Ammergauer Alpen, Werdenfelser Alpen, Berchtesgadener Alpen, Allgäuer Hauptkamm**



## Fresh snow at intermediate altitudes, snowdrifts at high altitudes

Avalanche danger above 1400 m is moderate. Wet snow is the main problem. It is to be expected that wet loose snow avalanches trigger naturally on very steep intermediate altitude slopes that have not yet discharged and that glide snow avalanches trigger naturally on slopes with smooth ground. Above 1400 m avalanches can reach medium size.

Heed fresh snowdrifts at high altitude which can be triggered by a single person as small-to-medium-sized slabs in particular close to ridges in NW/N/SE aspects and in wind-loaded gullies and bowls. Size and frequency of avalanche prone locations increase with ascending altitude.

## Snowpack structure

In many places a thin melt-freeze crust not capable of bearing loads forms during the night. Penetration of moisture into the snowpack at lower altitudes continues due to rainfall. Fresh snowdrifts accumulate at higher altitude which are deposited on dry new snow in leeward high altitude terrain. At intermediate altitude the old snowpack is frequently wet down to the ground, whereas it is by and large compact and stable at high altitude and are prone to triggering. There is barely any snow below 1400 m.

## Outlook

As a result of a cold front, avalanche danger will increase on Thursday.

Translated by Jeffrey McCabe, [www.creativtrans.com](http://www.creativtrans.com)

### Avalanche problems



### Danger ratings



### Expositions

