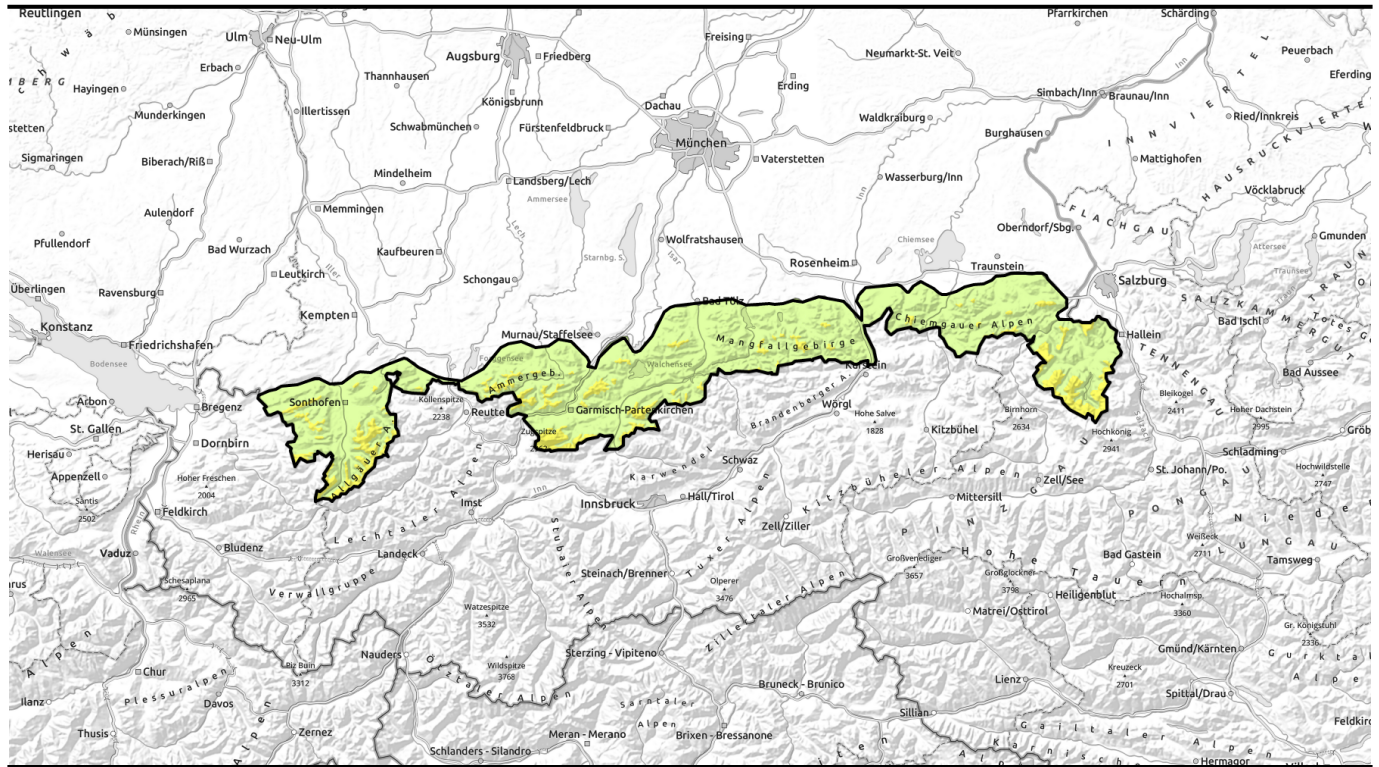


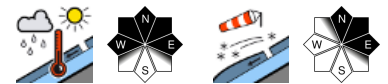
# Avalanche report for Tuesday, 11.04.2023



## Danger of slab avalanches at higher altitude rises due to stormy weather and heavy precipitation.



Bayerische Voralpen West, Bayerische Voralpen Mitte, Bayerische Voralpen Ost, Chiemgauer Alpen West, Chiemgauer Alpen Ost, Allgäuer Vorberge, Ammergauer Alpen, Werdenfeller Alpen, Berchtesgadener Alpen, Allgäuer Hauptkamm



### Avalanche problems



### Danger ratings

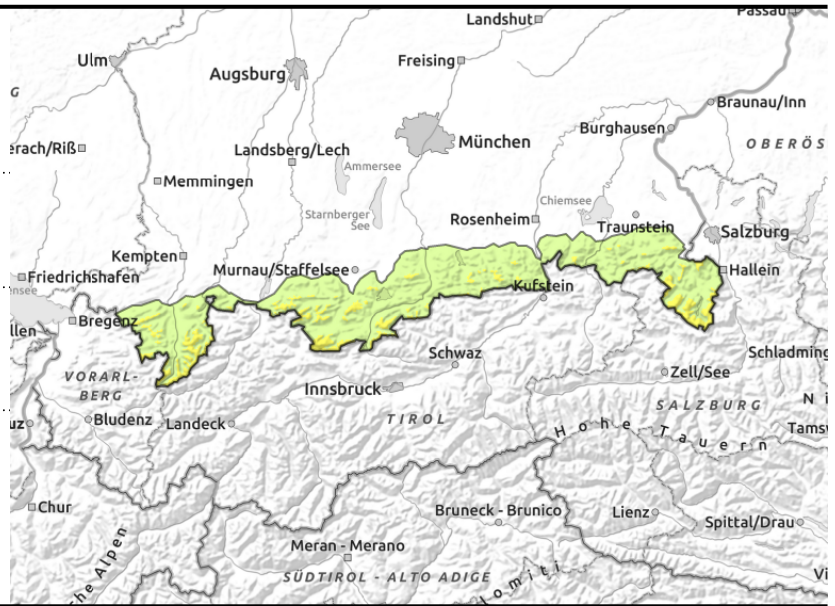
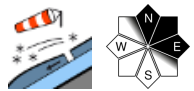
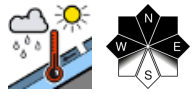


### Expositions



# Avalanche report for **Tuesday, 11.04.2023**

**Bayerische Voralpen West, Bayerische Voralpen Mitte, Bayerische Voralpen Ost, Chiemgauer Alpen West, Chiemgauer Alpen Ost, Allgäuer Vorberge, Ammergauer Alpen, Werdenfelser Alpen, Berchtesgadener Alpen, Allgäuer Hauptkamm**



## Wet snow at intermediate altitude, snowdrifts at high altitude

Avalanche danger above 1400 m is moderate. Wet snow is the main problem. In particular on steep intermediate altitude slopes on the shady side wet loose snow avalanches (or on smooth grass-covered slopes glide snow avalanches) are expected to trigger naturally. Above 1400 m avalanches can reach medium size.

Heed fresh snowdrifts at high altitude which can be triggered as slab avalanches by a single person. This applies in particular to ridgeline terrain in north to east aspects as well as to wind-loaded gullies and bowls. Frequency and size of avalanche prone locations increase with ascending altitude during the course of the day.

### Snowpack structure

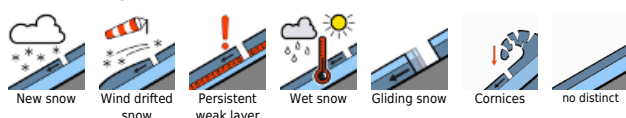
With cloudy skies the snowpack only cools insignificantly during the night. At intermediate altitudes it will become wet down to the ground following the onset of rainfall on Tuesday. Precipitation is accompanied by strong westerly winds. At higher altitudes fresh snowdrifts accumulate which will grow during the course of the day. On shady high altitude slopes the snowdrifts are especially prone to triggering. Elsewhere the old snowpack is compact and by and large stable. Below 1400 m there is hardly any snow on the ground.

### Outlook

Depending on the precipitation intensity the avalanche danger can even increase somewhat at higher altitudes during the course of the week.

Translated by Jeffrey McCabe, [www.creativtrans.com](http://www.creativtrans.com)

#### Avalanche problems



#### Danger ratings



#### Expositions

