

Daytime danger cycle due to spring-like temperatures



Bayerische Voralpen West, Bayerische Voralpen Mitte, Bayerische Voralpen Ost, Chiemgauer Alpen West, Chiemgauer Alpen Ost, Allgäuer Vorberge, Ammergauer Alpen, Werdenfeller Alpen, Berchtesgadener Alpen, Allgäuer Hauptkamm



Avalanche problems

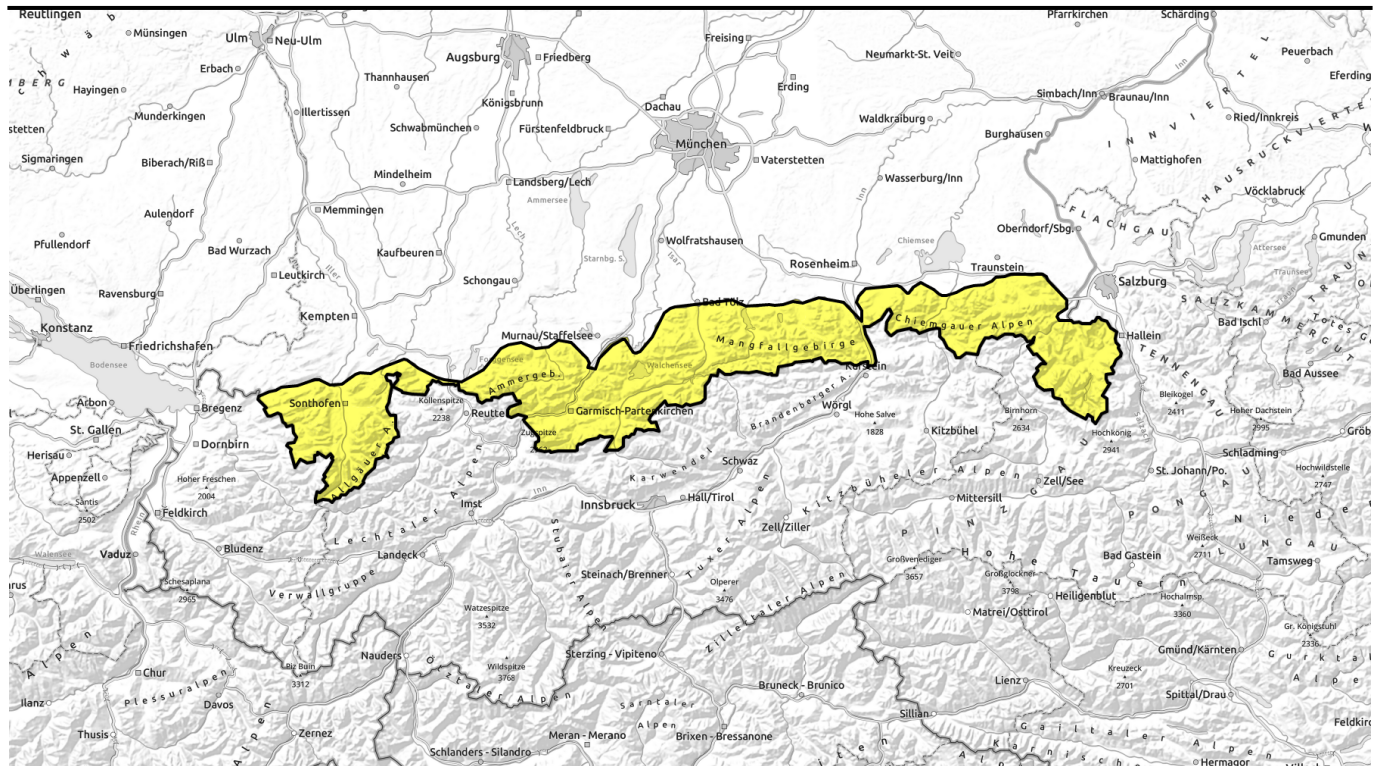


Danger ratings



Expositions





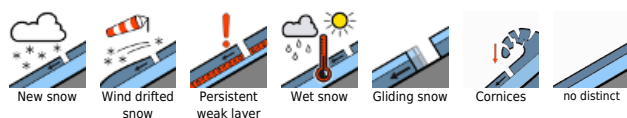
Tageszeitlicher Anstieg der Lawinengefahr mit frühlingshaften Temperaturen



Bayerische Voralpen West, Bayerische Voralpen Mitte, Bayerische Voralpen Ost, Chiemgauer Alpen West, Chiemgauer Alpen Ost, Allgäuer Vorberge, Ammergauer Alpen, Werdenfeller Alpen, Berchtesgadener Alpen, Allgäuer Hauptkamm



Avalanche problems



Danger ratings

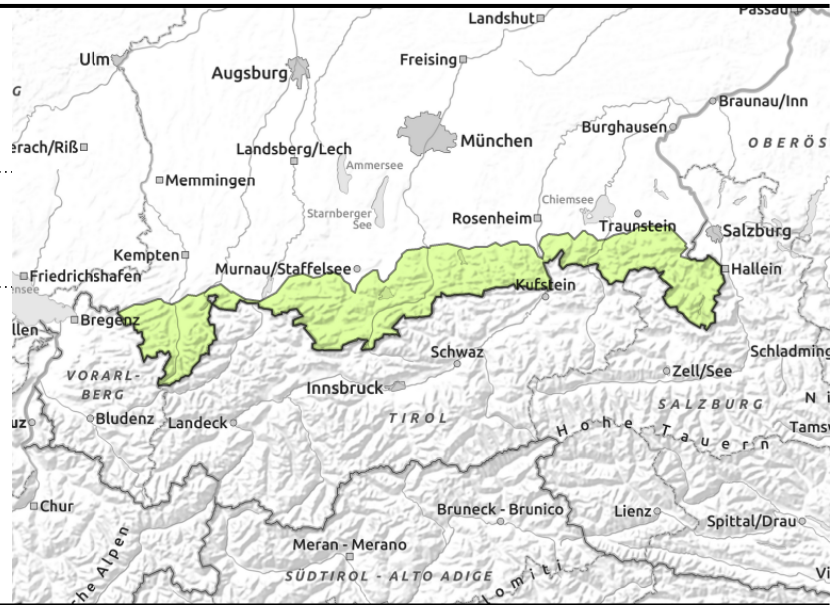


Expositions



Avalanche report for Monday, 10.04.2023, morning

Bayerische Voralpen West, Bayerische Voralpen Mitte, Bayerische Voralpen Ost, Chiemgauer Alpen West, Chiemgauer Alpen Ost, Allgäuer Vorberge, Ammergauer Alpen, Werdenfelser Alpen, Berchtesgadener Alpen, Allgäuer Hauptkamm



Start and end backcountry tours early!

As the day progresses the avalanche danger rises from low to moderate. Wet-snow is the main problem. Moist and wet avalanches are expected to trigger during the course of the day in steep sun-exposed terrain. These can also slide over the smooth ground. At higher altitudes it cannot be excluded that isolated avalanches grow to medium size.

In addition, the new snow of the last few days can be triggered by a single person as small slabs in extremely steep terrain. This can in particular happen on wind-impacted high altitude slopes adjacent to ridgelines. Risks of taking a fall outweigh those of being buried in snow.

Snowpack structure

With clear skies during Sunday night the snow that fell during the weekend will continue to settle and will form a thin melt-freeze crust on the sunny side which softens rapidly due to solar radiation. As the day progresses, moisture seeps into the snowpack which forfeits its firmness and starts sliding. The fundament at intermediate altitudes is frequently wet. On the shady side the loose fresh snow blankets a compact and by and large stable old snowpack. Below 1300 m there is hardly any snow on the ground.

Outlook

As of Tuesday snowdrifts will accumulate at higher altitudes; elsewhere wet snow remains a problem.

Avalanche problems



Danger ratings

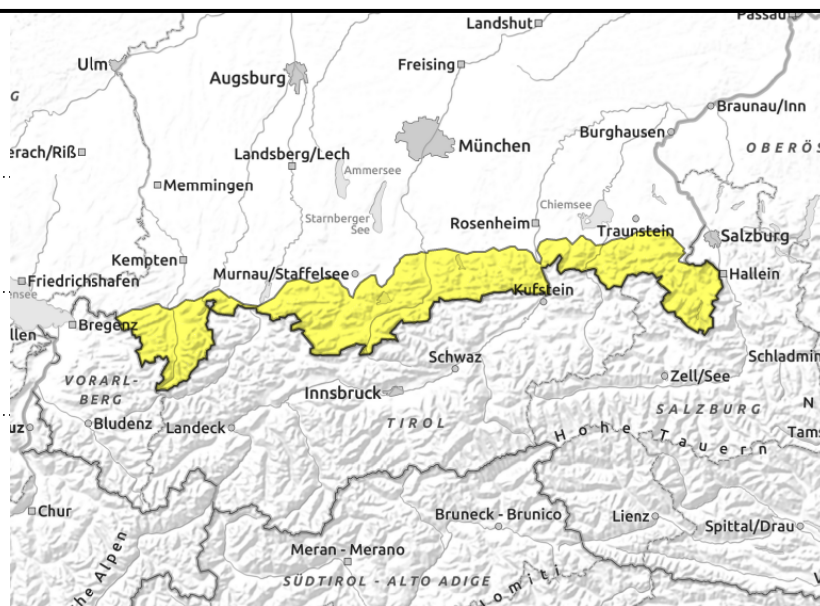
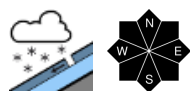
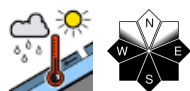


Expositions



Avalanche report for Monday, 10.04.2023, afternoon

Bayerische Voralpen West, Bayerische Voralpen Mitte, Bayerische Voralpen Ost, Chiemgauer Alpen West, Chiemgauer Alpen Ost, Allgäuer Vorberge, Ammergauer Alpen, Werdenfelser Alpen, Berchtesgadener Alpen, Allgäuer Hauptkamm



Start and end backcountry tours early!

As the day progresses the avalanche danger rises from low to moderate. Wet-snow is the main problem. Moist and wet avalanches are expected to trigger during the course of the day in steep sun-exposed terrain. These can also slide over the smooth ground. At higher altitudes it cannot be excluded that isolated avalanches grow to medium size.

In addition, the new snow of the last few days can be triggered by a single person as small slabs in extremely steep terrain. This can in particular happen on wind-impacted high altitude slopes adjacent to ridgelines. Risks of taking a fall outweigh those of being buried in snow.

Snowpack structure

With clear skies during Sunday night the snow that fell during the weekend will continue to settle and will form a thin melt-freeze crust on the sunny side which softens rapidly due to solar radiation. As the day progresses, moisture seeps into the snowpack which forfeits its firmness and starts sliding. The fundament at intermediate altitudes is frequently wet. On the shady side the loose fresh snow blankets a compact and by and large stable old snowpack. Below 1300 m there is hardly any snow on the ground.

Outlook

As of Tuesday snowdrifts will accumulate at higher altitudes; elsewhere wet snow remains a problem.

Translated by Jeffrey McCabe, www.creativtrans.com

Avalanche problems



Danger ratings



Expositions

