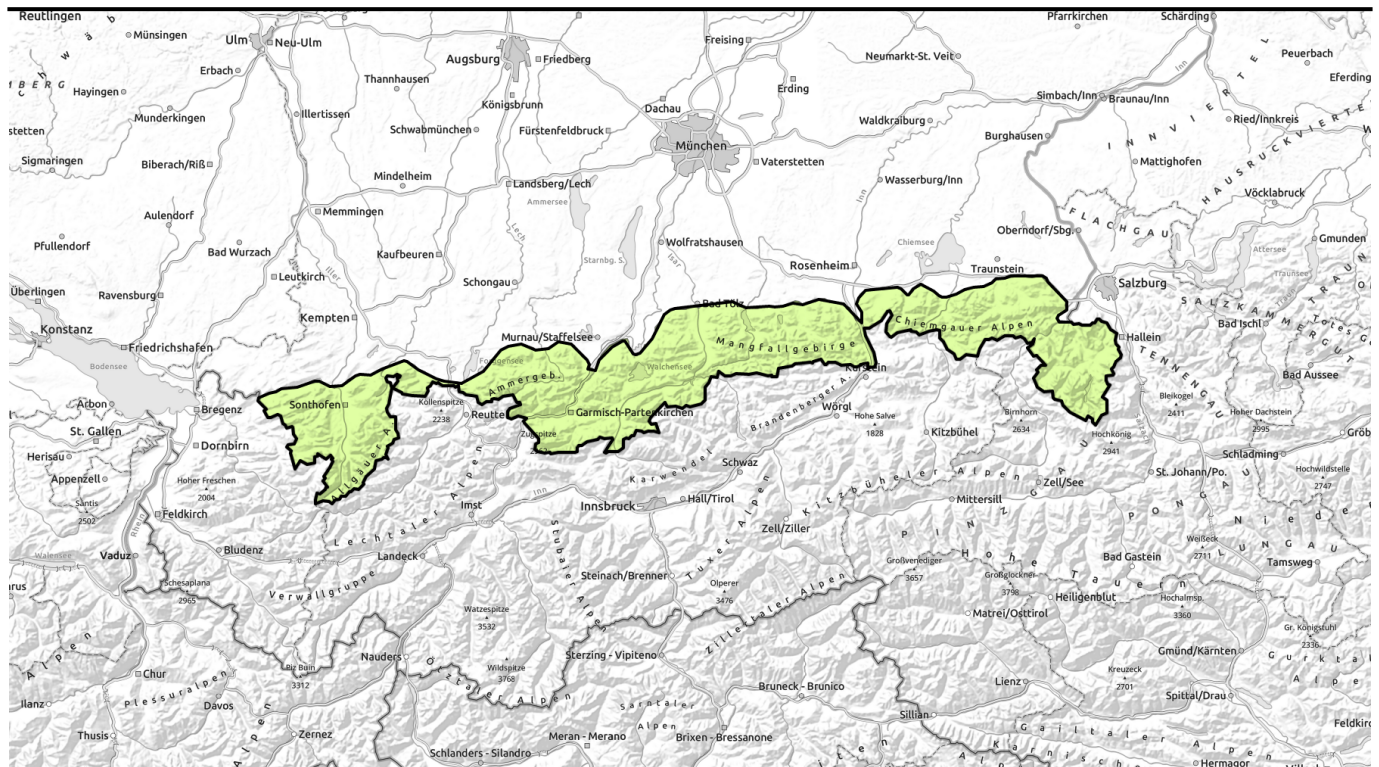




# Avalanche report 08.04.2023 through 10.04.2023



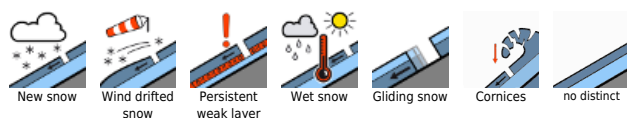
## Below-average snow depths, mostly stable conditions. Next Bulletin: Monday at 6:00 pm.



Bayerische Voralpen West, Bayerische Voralpen Mitte, Bayerische Voralpen Ost, Chiemgauer Alpen West, Chiemgauer Alpen Ost, Allgäuer Vorberge, Ammergauer Alpen, Werdenfeller Alpen, Berchtesgadener Alpen, Allgäuer Hauptkamm



### Avalanche problems



### Danger ratings

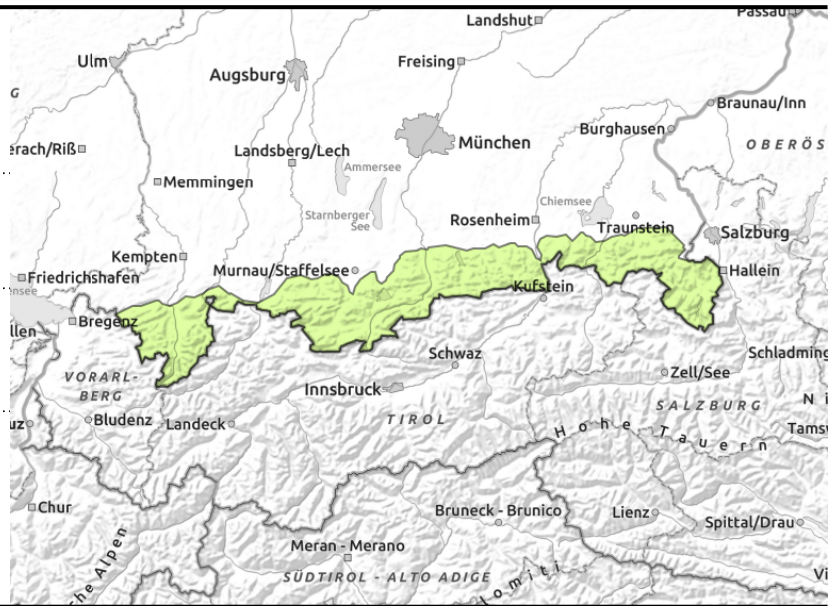
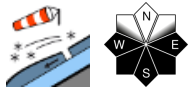
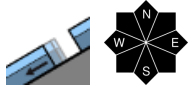


### Expositions



# Avalanche report **08.04.2023** through **10.04.2023**

**Bayerische Voralpen West, Bayerische Voralpen Mitte, Bayerische Voralpen Ost, Chiemgauer Alpen West, Chiemgauer Alpen Ost, Allgäuer Vorberge, Ammergauer Alpen, Werdenfelser Alpen, Berchtesgadener Alpen, Allgäuer Hauptkamm**



## Danger of falls on encrusted surfaces

Avalanche danger is low. On steep slope with smooth ground, small glide-snow avalanches can trigger naturally on steep slopes below 2000m where there is still sufficient snow. As a result of solar radiation, some fresh snow in steep terrain can trigger as small loose-snow avalanches. Isolated trigger-sensitive snowdrift accumulations require attentiveness at high altitudes: they can be triggered by one sole person. Risks of taking a fall outweigh those of being buried in snow.

## Snowpack structure

Moderate northerly winds are generating small ridgeline snowdrift accumulations, the are being deposited atop a melt-freeze encrusted old snowpack surface. Elsewhere, loose fresh snow blankets a dense and stable snowpack or lies on bare ground. The snow rapidly becomes moist amid solar radiation. The fundament at intermediate altitudes is frequently wet.

## Outlook

As temperatures rise, wet snow will become a problem after the Easter holidays.

Translated by Jeffrey McCabe, [www.creativtrans.com](http://www.creativtrans.com)

### Avalanche problems



### Danger ratings



### Expositions

