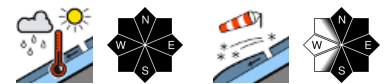


Fresh snowdrifts at high altitude; increasingly moist snowpack at intermediate altitude

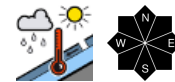


Allgäuer Hauptkamm, Werdenfelser Alpen, Berchtesgadener Alpen

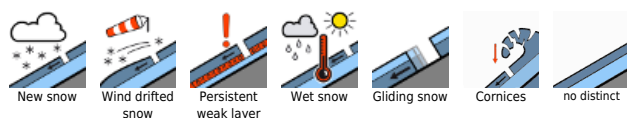


1500 m

Allgäuer Vorberge, Ammergauer Alpen, Bayerische Voralpen West, Bayerische Voralpen Mitte, Bayerische Voralpen Ost, Chiemgauer Alpen West, Chiemgauer Alpen Ost



Avalanche problems

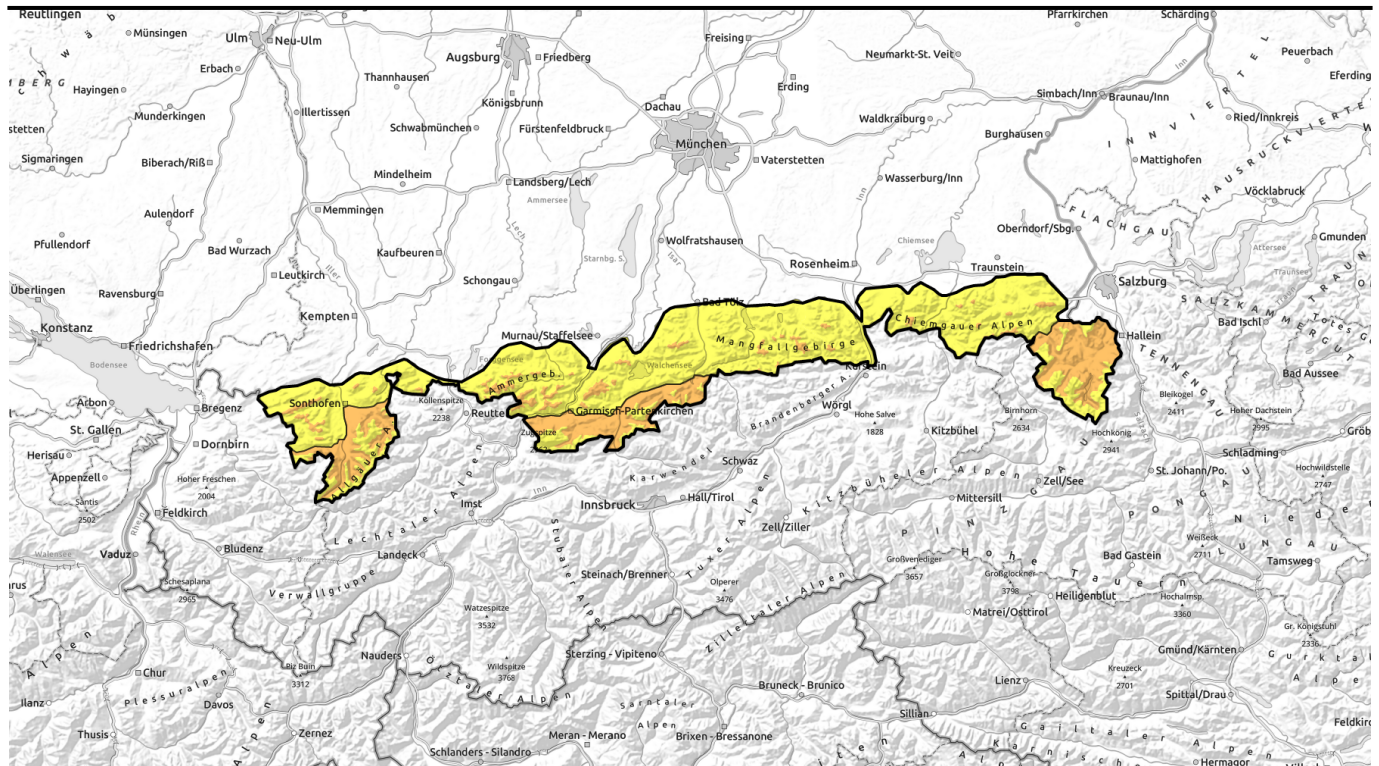


Danger ratings



Expositions

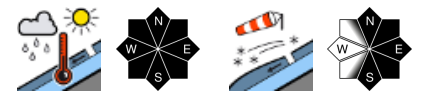




Frischer Triebschnee in den Hochlagen, zunehmend durchfeuchtete Schneedecke in mittleren Lagen



Allgäuer Hauptkamm, Werdenfelser Alpen, Berchtesgadener Alpen



2000 m

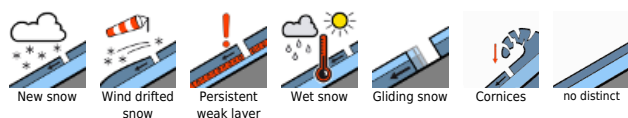


Allgäuer Vorberge, Ammergauer Alpen, Bayerische Voralpen West, Bayerische Voralpen Mitte, Bayerische Voralpen Ost, Chiemgauer Alpen West, Chiemgauer Alpen Ost



1500 m

Avalanche problems



Danger ratings

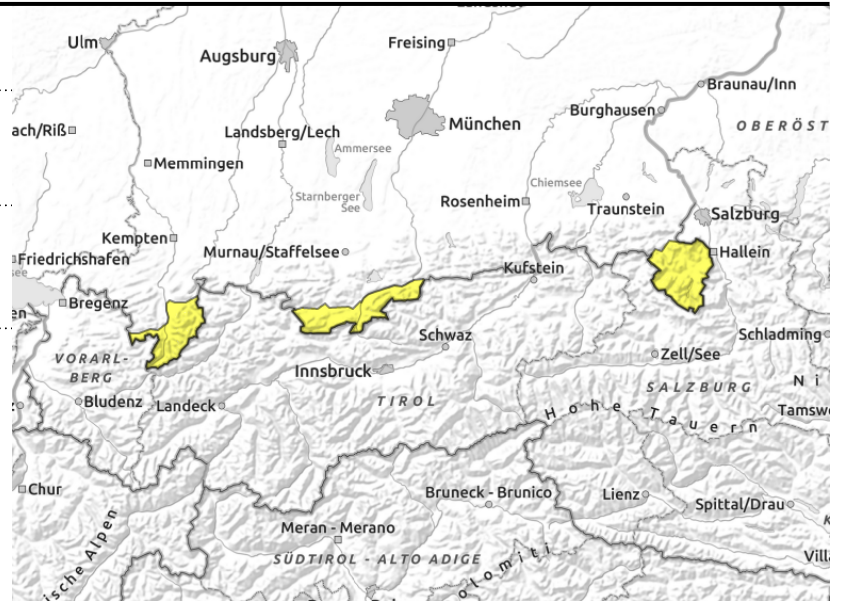
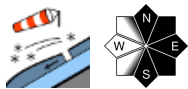
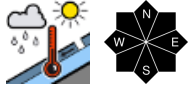


Expositions



Avalanche report for Thursday, 30.03.2023, morning

Allgäuer Hauptkamm, Werdenfeller Alpen, Berchtesgadener Alpen



Beware of small trigger-sensitive snowdrift accumulations at high altitude!

Avalanche danger is generally moderate, but rises to considerable at intermediate altitudes during the second half of the day.

Main problem: wet snow. At intermediate altitudes the danger of naturally triggering wet loose snow and slab avalanches in steep rocky terrain and wind-loaded starting zones rises during the second half of the day due to heavy rainfall. Avalanches are mostly medium-sized. On steep smooth grass-covered slopes the snowpack can also slide over the ground, especially where the ground has been bare before the recent snowfall. Glide snow avalanches can grow to medium size. Therefore, stay clear of terrain below glide cracks.

In addition, even a single person engaged in snow sports can trigger fresh snowdrifts as slab avalanches at high altitude. Avalanche prone locations are found in particular in steep ridgeline terrain in N/E/SW aspects, but also behind abrupt changes in the terrain distant from ridgelines as well as in freshly wind-loaded gullies and bowls. Avalanches are mostly medium-sized.

Snowpack structure

Strong westerly breezes at high altitude transport the loose snow and generate small, but trigger-sensitive snowdrift accumulations. Weak intermediate layers embedded in older snowdrift accumulations are gradually bonding. However, they can still be triggered at transitions from deep to shallow snow. At intermediate altitudes, rainfall will intensify in the second half of the day and will thoroughly moisten the uppermost already wet snow layers. As a consequence the snowpack forfeits its firmness at the boundary layers and at the ground.

Outlook

The next few days will be variable and wet. Winds will be brisk. The avalanche situation remains tense.

Avalanche problems



Danger ratings

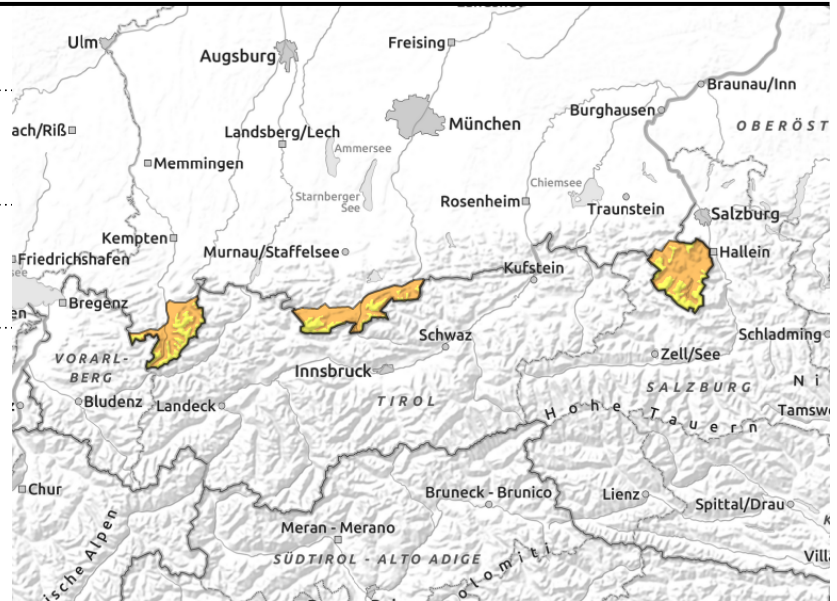
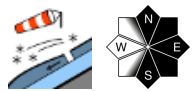
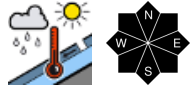


Expositions



Avalanche report for Thursday, 30.03.2023, afternoon

Allgäuer Hauptkamm, Werdenfeller Alpen, Berchtesgadener Alpen



Beware of small trigger-sensitive snowdrift accumulations at high altitude!

Avalanche danger is generally moderate, but rises to considerable at intermediate altitudes during the second half of the day.

Main problem: wet snow. At intermediate altitudes the danger of naturally triggering wet loose snow and slab avalanches in steep rocky terrain and wind-loaded starting zones rises during the second half of the day due to heavy rainfall. Avalanches are mostly medium-sized. On steep smooth grass-covered slopes the snowpack can also slide over the ground, especially where the ground has been bare before the recent snowfall. Glide snow avalanches can grow to medium size. Therefore, stay clear of terrain below glide cracks.

In addition, even a single person engaged in snow sports can trigger fresh snowdrifts as slab avalanches at high altitude. Avalanche prone locations are found in particular in steep ridgeline terrain in N/E/SW aspects, but also behind abrupt changes in the terrain distant from ridgelines as well as in freshly wind-loaded gullies and bowls. Avalanches are mostly medium-sized.

Snowpack structure

Strong westerly breezes at high altitude transport the loose snow and generate small, but trigger-sensitive snowdrift accumulations. Weak intermediate layers embedded in older snowdrift accumulations are gradually bonding. However, they can still be triggered at transitions from deep to shallow snow. At intermediate altitudes, rainfall will intensify in the second half of the day and will thoroughly moisten the uppermost already wet snow layers. As a consequence the snowpack forfeits its firmness at the boundary layers and at the ground.

Outlook

The next few days will be variable and wet. Winds will be brisk. The avalanche situation remains tense.

Avalanche problems



Danger ratings

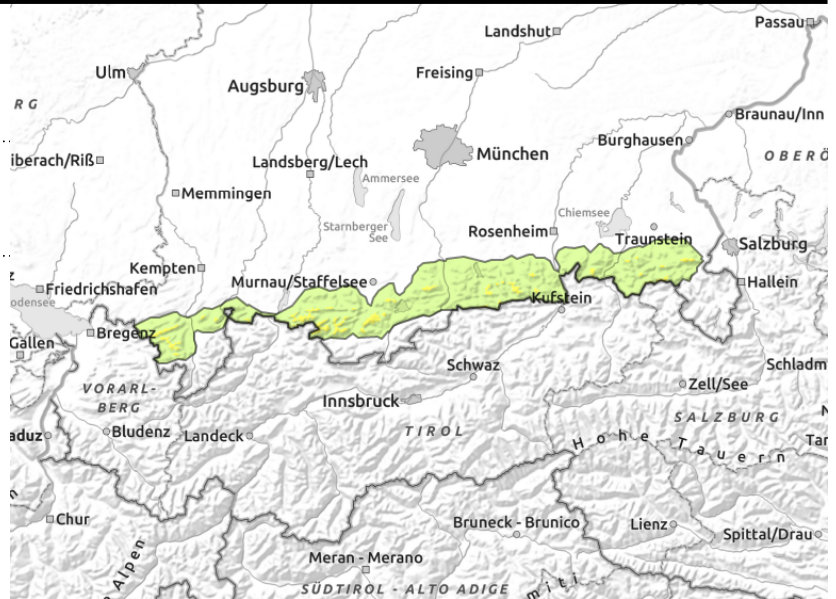
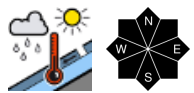
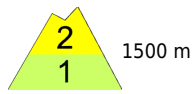


Expositions



Avalanche report for Thursday, 30.03.2023, morning

Allgäuer Vorberge, Ammergauer Alpen, Bayerische Voralpen West, Bayerische Voralpen Mitte, Bayerische Voralpen Ost, Chiemgauer Alpen West, Chiemgauer Alpen Ost



Snowpack increasingly moist

Above 1500 m avalanche danger is moderate and rises to considerable in the second half of the day. Below 1500 m avalanche danger will rise from low to moderate.

Main problem: wet snow. At intermediate altitudes the danger of naturally triggering wet loose snow and slab avalanches in steep rocky terrain and wind-loaded starting zones rises during the second half of the day due to heavy rainfall. Avalanches are mostly medium-sized. On steep smooth grass-covered slopes the snowpack can also slide over the ground, especially where the ground has been bare before the recent snowfall. Glide snow avalanches can grow to medium size. Therefore, stay clear of terrain below glide cracks.

Snowpack structure

In the second half of the day rainfall will thoroughly moisten the snowpack down to the ground, which will therefore forfeit its firmness at the boundary layers and directly on the ground. In the valleys and at intermediate altitudes the new snow of recent days is deposited atop a mostly shallow moist old snowpack or directly on the bare ground.

Outlook

The next few days will be variable and wet. Winds will be brisk. The avalanche situation remains tense.

Avalanche problems



Danger ratings

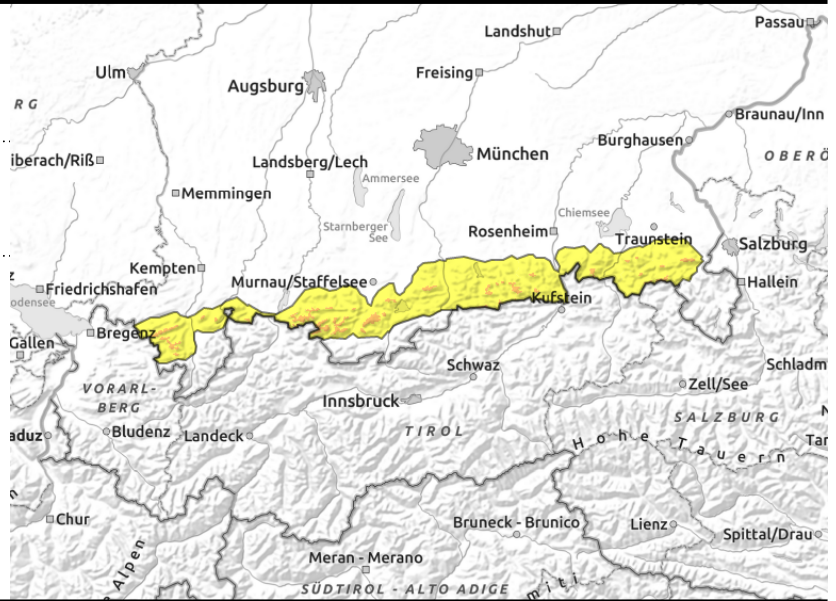
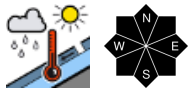
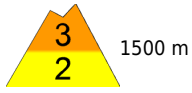


Expositions



Avalanche report for Thursday, 30.03.2023, afternoon

Allgäuer Vorberge, Ammergauer Alpen, Bayerische Voralpen West, Bayerische Voralpen Mitte, Bayerische Voralpen Ost, Chiemgauer Alpen West, Chiemgauer Alpen Ost



Snowpack increasingly moist

Above 1500 m avalanche danger is moderate and rises to considerable in the second half of the day. Below 1500 m avalanche danger will rise from low to moderate.

Main problem: wet snow. At intermediate altitudes the danger of naturally triggering wet loose snow and slab avalanches in steep rocky terrain and wind-loaded starting zones rises during the second half of the day due to heavy rainfall. Avalanches are mostly medium-sized. On steep smooth grass-covered slopes the snowpack can also slide over the ground, especially where the ground has been bare before the recent snowfall. Glide snow avalanches can grow to medium size. Therefore, stay clear of terrain below glide cracks.

Snowpack structure

In the second half of the day rainfall will thoroughly moisten the snowpack down to the ground, which will therefore forfeit its firmness at the boundary layers and directly on the ground. In the valleys and at intermediate altitudes the new snow of recent days is deposited atop a mostly shallow moist old snowpack or directly on the bare ground.

Outlook

The next few days will be variable and wet. Winds will be brisk. The avalanche situation remains tense.

Translated by Jeffrey McCabe, www.creativtrans.com

Avalanche problems



Danger ratings



Expositions

