

Avalanche danger rises due to heavy snowfall!



forestline

Allgäuer Hauptkamm, Werdenfelder Alpen, Allgäuer Vorberge, Ammergauer Alpen



1500 m

Berchtesgadener Alpen, Chiemgauer Alpen Ost, Chiemgauer Alpen West, Bayerische Voralpen Ost, Bayerische Voralpen West, Bayerische Voralpen Mitte



Avalanche problems

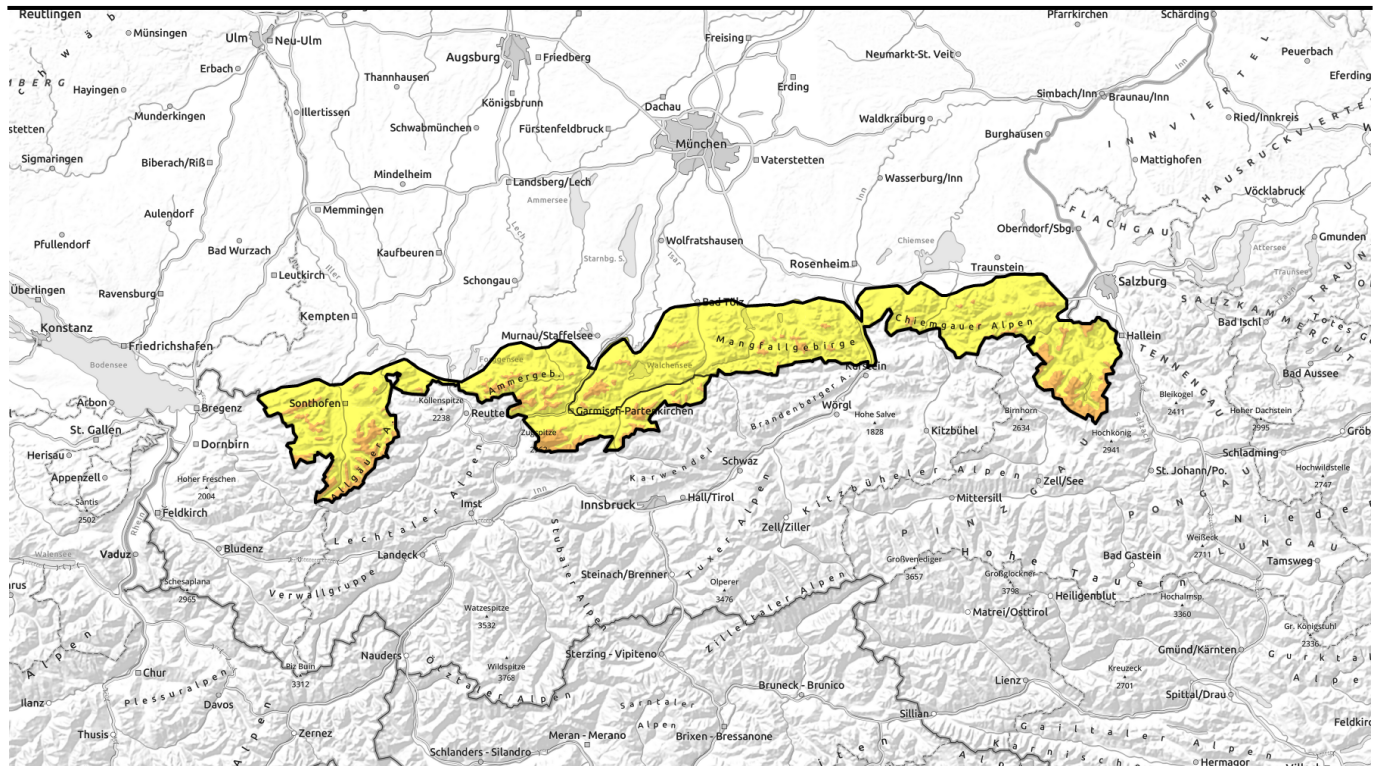


Danger ratings



Expositions





Ergiebiger Schneefall führt zu Anstieg der Lawinengefahr!



Allgäuer Hauptkamm, Werdenfeller Alpen, Allgäuer Vorberge, Ammergauer Alpen



forestline

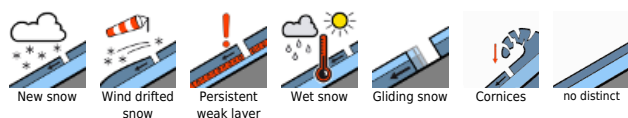


Berchtesgadener Alpen, Chiemgauer Alpen Ost, Chiemgauer Alpen West, Bayerische Voralpen Ost, Bayerische Voralpen West, Bayerische Voralpen Mitte



2000 m

Avalanche problems



Danger ratings

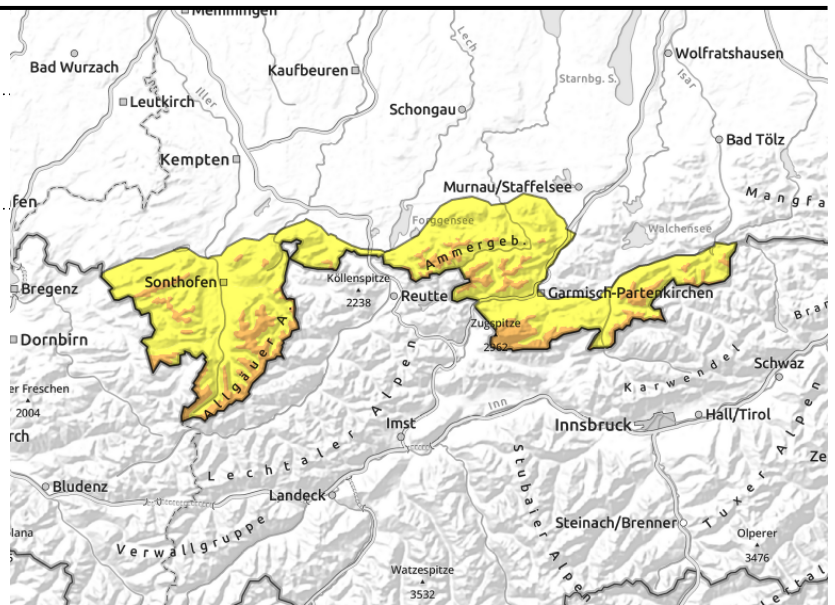


Expositions



Avalanche report for Monday, 27.03.2023

Allgäuer Hauptkamm, Werdenfeller Alpen, Allgäuer Vorberge, Ammergauer Alpen



Slab avalanches easily triggerable!

Avalanche danger above the timberline is considerable, below that altitude danger is moderate. Main problem: fresh snow which is triggerable by a single person engaged in winter sports as slab avalanches or can release spontaneously as loose snow avalanches in steep rocky terrain. Frequency and size of avalanche prone locations increase with ascending altitude. Slab avalanches can be triggered adjacent to ridgelines behind abrupt changes in terrain and in gullies and bowls in all aspect. They can attain medium size.

Snowpack structure

Up to half a meter of new snow will fall as temperatures drop rapidly. At higher altitudes it will be deposited atop older snowdrift accumulations. Significant temperature variations within the snowpack promote the formation of weak intermediate layers consisting of faceted crystals. These are trigger-sensitive, in particular at high altitude. The snowfall is accompanied by strong westerly winds, meaning that partly extensive snowdrift accumulations are generated. At lower altitudes the fresh snow is deposited atop a thin moist snowpack or directly on the bare ground. At intermediate altitudes the snowpack is frequently wet down to the ground.

Outlook

As the intensity of the precipitations decreases and the snowpack settles fast the danger of dry avalanches will decrease.

Avalanche problems



Danger ratings

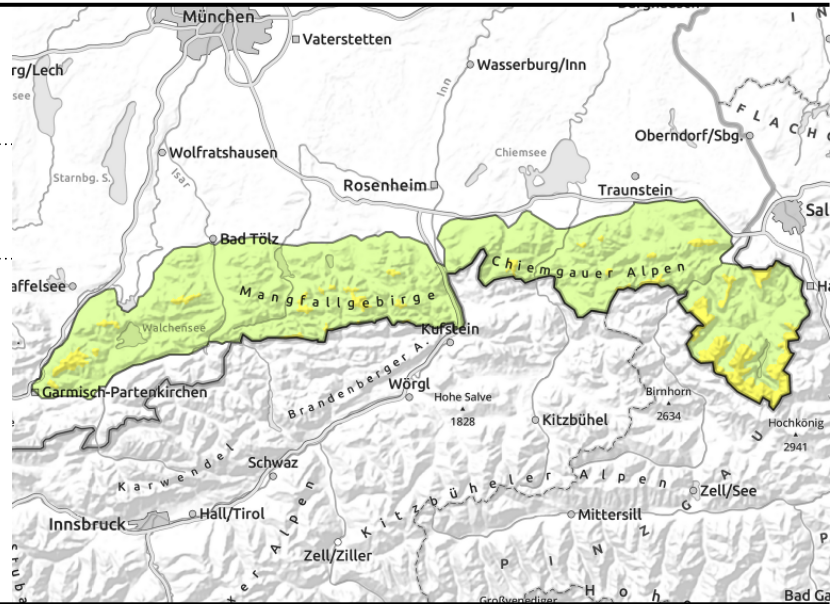
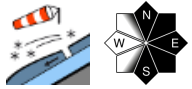
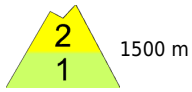


Expositions



Avalanche report for Monday, 27.03.2023, morning

Berchtesgadener Alpen, Chiemgauer Alpen Ost, Chiemgauer Alpen West, Bayerische Voralpen Ost, Bayerische Voralpen West, Bayerische Voralpen Mitte



Caution urged toward daytime avalanche danger cycle

Below 1500 m avalanche danger is moderate in the morning, below that altitude it is low, but at high altitude it rises to considerable during the course of the day. Main problem: fresh snow which is triggerable by a single person engaged in winter sports as slab avalanches or can release spontaneously as loose snow avalanches in steep rocky terrain. Frequency and size of avalanche prone locations increase with ascending altitude during the course of the day. Slab avalanches can be triggered adjacent to ridgelines behind abrupt changes in terrain and in gullies and bowls in all aspect. They can attain medium size.

Snowpack structure

Up to half a meter of new snow will fall while temperatures drop rapidly. At higher altitudes it will be deposited atop older snowdrift accumulations. Significant temperature variations within the snowpack promote the formation of weak intermediate layers consisting of faceted crystals. These are trigger-sensitive, in particular at high altitude. The snowfall is accompanied by strong westerly winds, meaning that extensive snowdrift accumulations are generated during the course of the day. At lower altitudes the fresh snow is deposited atop a thin moist snowpack or directly on the bare ground. At intermediate altitudes the snowpack is frequently wet down to the ground.

Outlook

As the intensity of the precipitations decreases and the snowpack settles fast the danger of dry avalanches will decrease.

Avalanche problems



Danger ratings

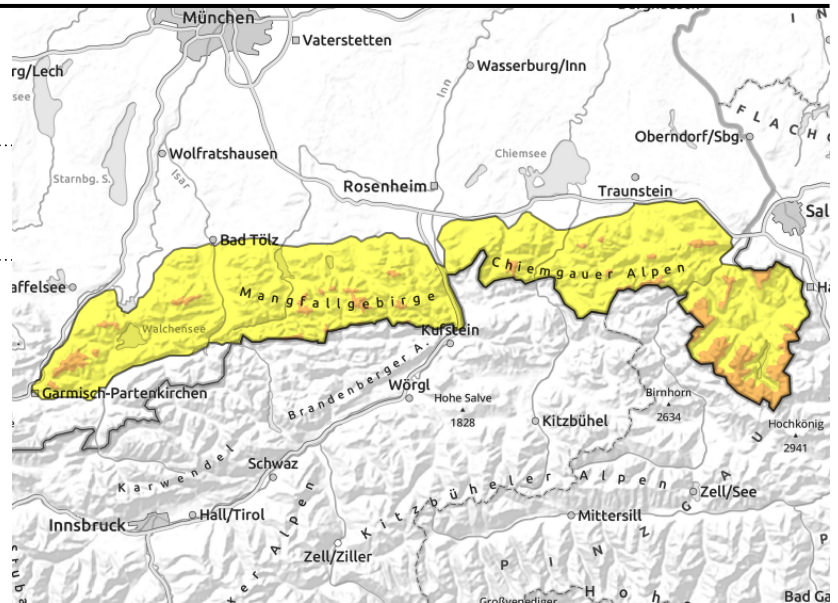
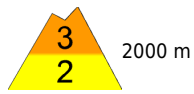


Expositions



Avalanche report for Monday, 27.03.2023, afternoon

Berchtesgadener Alpen, Chiemgauer Alpen Ost, Chiemgauer Alpen West, Bayerische Voralpen Ost, Bayerische Voralpen West, Bayerische Voralpen Mitte



Caution urged toward daytime avalanche danger cycle

Below 1500 m avalanche danger is moderate in the morning, below that altitude it is low, but at high altitude it rises to considerable during the course of the day. Main problem: fresh snow which is triggerable by a single person engaged in winter sports as slab avalanches or can release spontaneously as loose snow avalanches in steep rocky terrain. Frequency and size of avalanche prone locations increase with ascending altitude during the course of the day. Slab avalanches can be triggered adjacent to ridgelines behind abrupt changes in terrain and in gullies and bowls in all aspect. They can attain medium size.

Snowpack structure

Up to half a meter of new snow will fall while temperatures drop rapidly. At higher altitudes it will be deposited atop older snowdrift accumulations. Significant temperature variations within the snowpack promote the formation of weak intermediate layers consisting of faceted crystals. These are trigger-sensitive, in particular at high altitude. The snowfall is accompanied by strong westerly winds, meaning that extensive snowdrift accumulations are generated during the course of the day. At lower altitudes the fresh snow is deposited atop a thin moist snowpack or directly on the bare ground. At intermediate altitudes the snowpack is frequently wet down to the ground.

Outlook

As the intensity of the precipitations decreases and the snowpack settles fast the danger of dry avalanches will decrease.

Translated by Jeffrey McCabe, www.creativtrans.com

Avalanche problems



Danger ratings



Expositions

