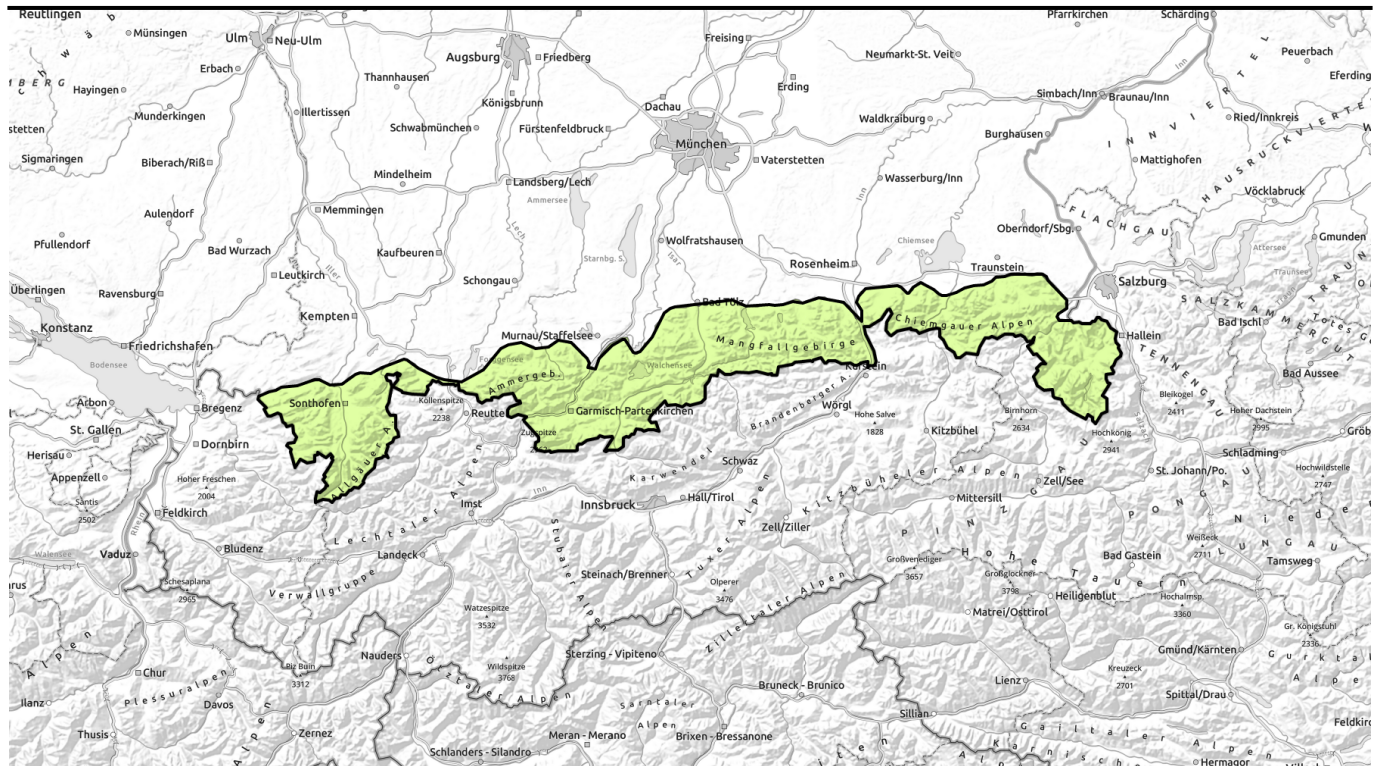


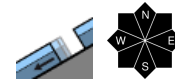
Avalanche report for Thursday, 23.03.2023, morning



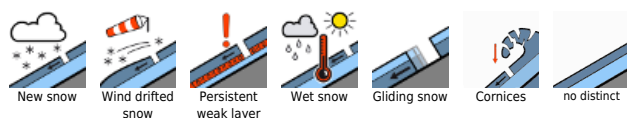
Springtime situation: daytime increase in avalanche danger



Bayerische Voralpen West, Bayerische Voralpen Ost, Chiemgauer Alpen West, Chiemgauer Alpen Ost, Bayerische Voralpen Mitte, Ammergauer Alpen, Berchtesgadener Alpen, Allgäuer Vorberge, Allgäuer Hauptkamm, Werdenfeller Alpen



Avalanche problems

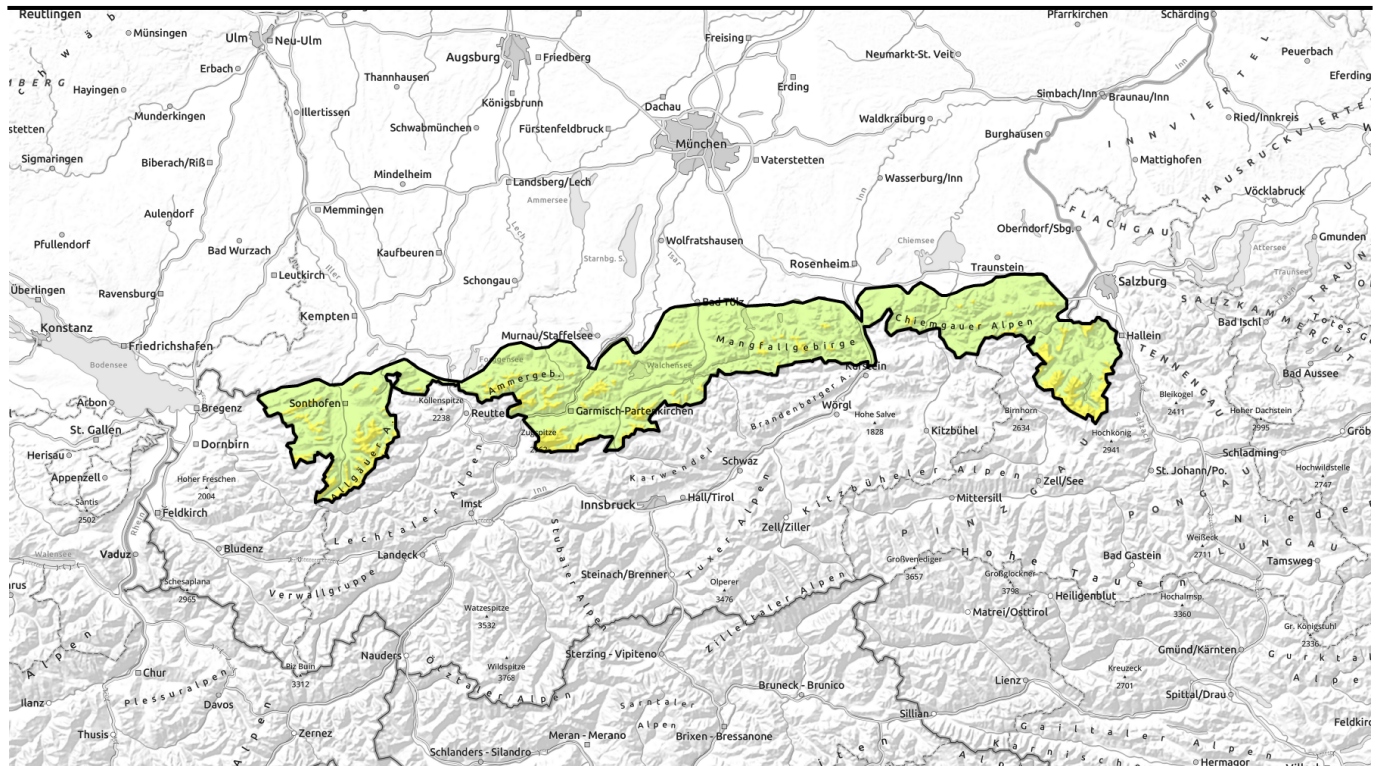


Danger ratings



Expositions





Frühjahrssituation mit tageszeitlichem Anstieg der Lawinengefahr.

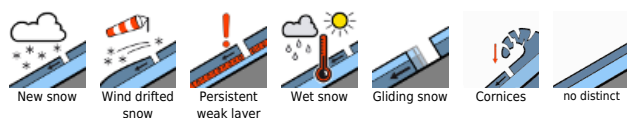


1500 m

Bayerische Voralpen West, Bayerische Voralpen Ost, Chiemgauer Alpen West, Chiemgauer Alpen Ost, Bayerische Voralpen Mitte, Ammergauer Alpen, Berchtesgadener Alpen, Allgäuer Vorberge, Allgäuer Hauptkamm, Werdenfelser Alpen



Avalanche problems



Danger ratings

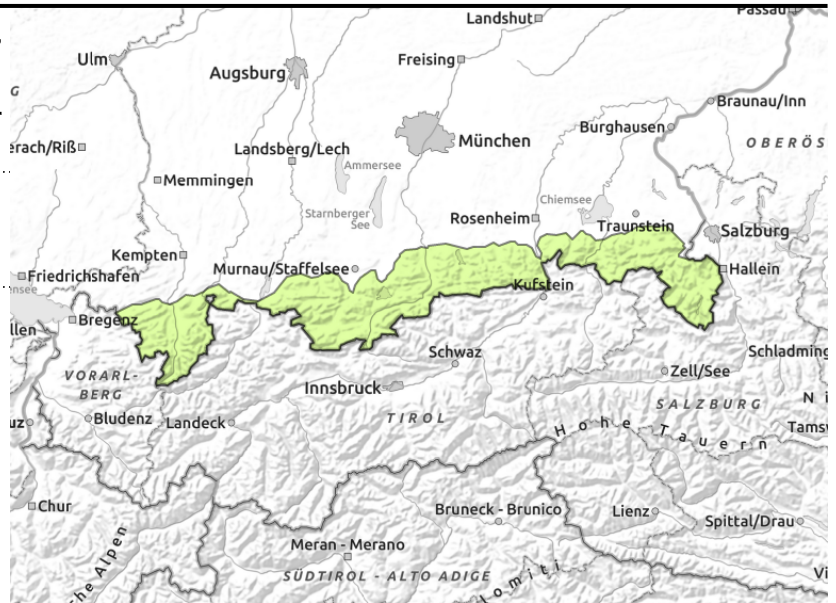
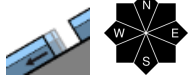


Expositions



Avalanche report for Thursday, 23.03.2023, morning

Bayerische Voralpen West, Bayerische Voralpen Ost, Chiemgauer Alpen West, Chiemgauer Alpen Ost, Bayerische Voralpen Mitte, Ammergauer Alpen, Berchtesgadener Alpen, Allgäuer Vorberge, Allgäuer Hauptkamm, Werdenfelser Alpen



Increasing sink-in depths: indicators of danger of wet-snow avalanches

Avalanche danger in the Bavarian mountains increases from low to moderate above 1500 m during the course of the day. Main danger: wet-snow avalanches. On very steep slopes which have not yet discharged, sunshine and higher daytime temperatures can cause small-to-medium sized wet loose-snow avalanches to trigger naturally. Likelihood of triggering tends to increase as the day unfolds. On steep slopes where the ground is smooth, small-to-medium glide-snow avalanches are possible. Circumvent glide cracks.

Snowpack structure

The snowpack in Bavaria is thoroughly wet well up to intermediate altitudes and wet down to the ground. Variably cloud skies on Monday night will help a thin melt-freeze crust to form. This will then soften up during the daytime on Tuesday, and the snowpack forfeit firmness, premitting wet-snow and glide-snow avalanches to trigger. At high altitudes there are soft layers which persist beneath older snowdrift accumulations, though these are unlikely to trigger. Small snowdrift patches can still be generated adjacent to ridgelines. Below 1500m there is no longer much snow on the ground.

Outlook

On Friday as a result of rainfall, wet-snow avalanche activity will increase before temperatures drop over the weekend.

Avalanche problems



Danger ratings

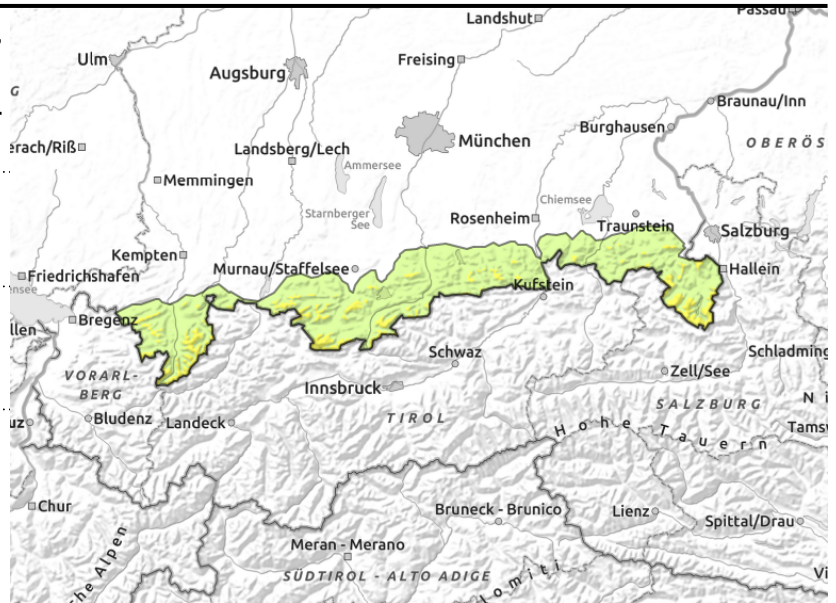
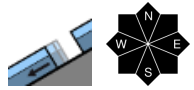
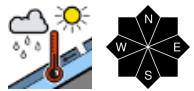
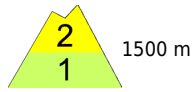


Expositions



Avalanche report for Thursday, 23.03.2023, afternoon

Bayerische Voralpen West, Bayerische Voralpen Ost, Chiemgauer Alpen West, Chiemgauer Alpen Ost, Bayerische Voralpen Mitte, Ammergauer Alpen, Berchtesgadener Alpen, Allgäuer Vorberge, Allgäuer Hauptkamm, Werdenfelser Alpen



Increasing sink-in depths: indicators of danger of wet-snow avalanches

Avalanche danger in the Bavarian mountains increases from low to moderate above 1500 m during the course of the day. Main danger: wet-snow avalanches. On very steep slopes which have not yet discharged, sunshine and higher daytime temperatures can cause small-to-medium sized wet loose-snow avalanches to trigger naturally. Likelihood of triggering tends to increase as the day unfolds. On steep slopes where the ground is smooth, small-to-medium glide-snow avalanches are possible. Circumvent glide cracks.

Snowpack structure

The snowpack in Bavaria is thoroughly wet well up to intermediate altitudes and wet down to the ground. Variably cloud skies on Monday night will help a thin melt-freeze crust to form. This will then soften up during the daytime on Tuesday, and the snowpack forfeit firmness, premitting wet-snow and glide-snow avalanches to trigger. At high altitudes there are soft layers which persist beneath older snowdrift accumulations, though these are unlikely to trigger. Small snowdrift patches can still be generated adjacent to ridgelines. Below 1500m there is no longer much snow on the ground.

Outlook

On Friday as a result of rainfall, wet-snow avalanche activity will increase before temperatures drop over the weekend.

Translated by Jeffrey McCabe, www.creativtrans.com

Avalanche problems



Danger ratings



Expositions

