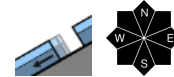


Daytime rise in danger of glide-snow and wet-snow avalanches



Bayerische Voralpen West, Bayerische Voralpen Ost, Chiemgauer Alpen West, Chiemgauer Alpen Ost, Bayerische Voralpen Mitte, Ammergauer Alpen, Berchtesgadener Alpen, Allgäuer Vorberge, Allgäuer Hauptkamm, Werdenfelser Alpen



Avalanche problems

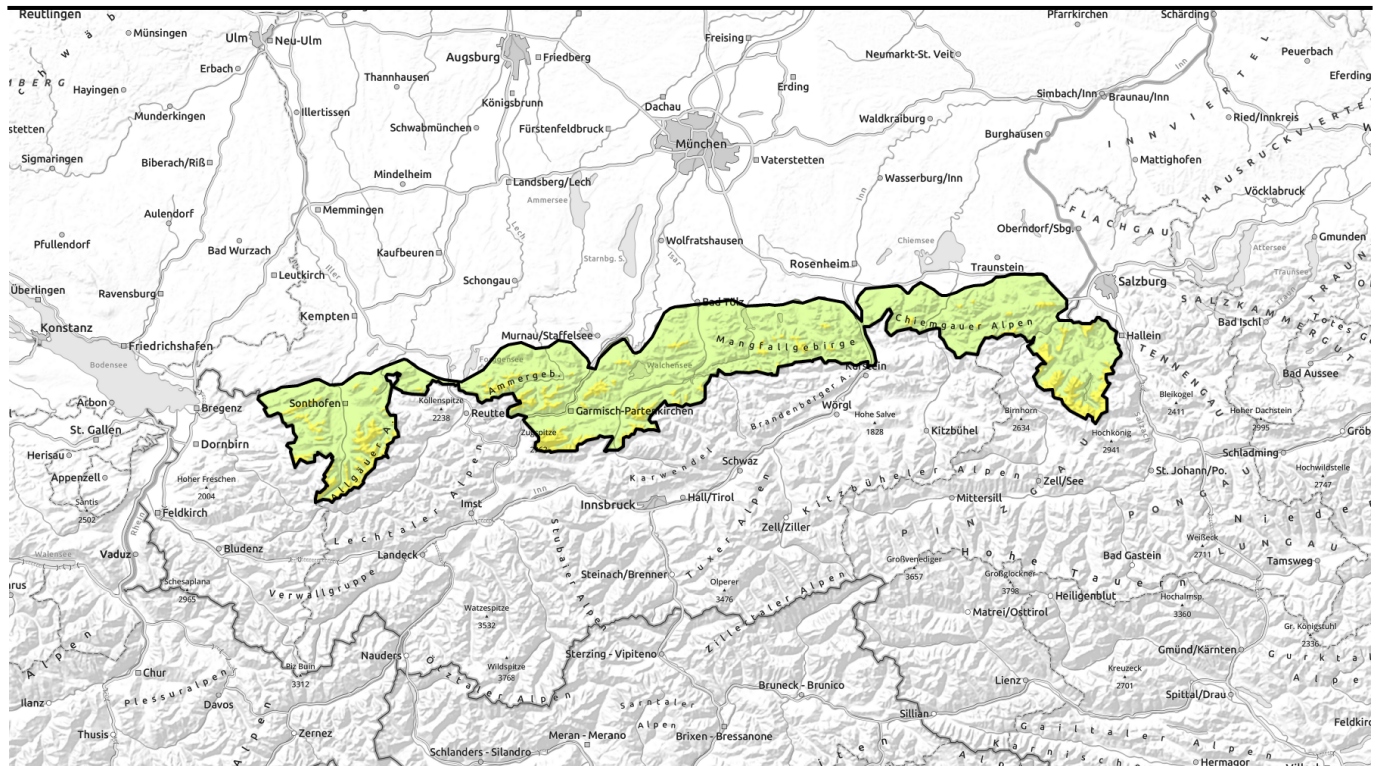


Danger ratings



Expositions





Tageszeitlicher Anstieg der Nass- und Gleitschneeaktivität.

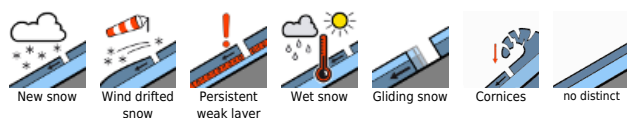


1500 m

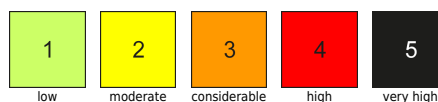
Bayerische Voralpen West, Bayerische Voralpen Ost, Chiemgauer Alpen West, Chiemgauer Alpen Ost, Bayerische Voralpen Mitte, Ammergauer Alpen, Berchtesgadener Alpen, Allgäuer Vorberge, Allgäuer Hauptkamm, Werdenfelser Alpen



Avalanche problems



Danger ratings

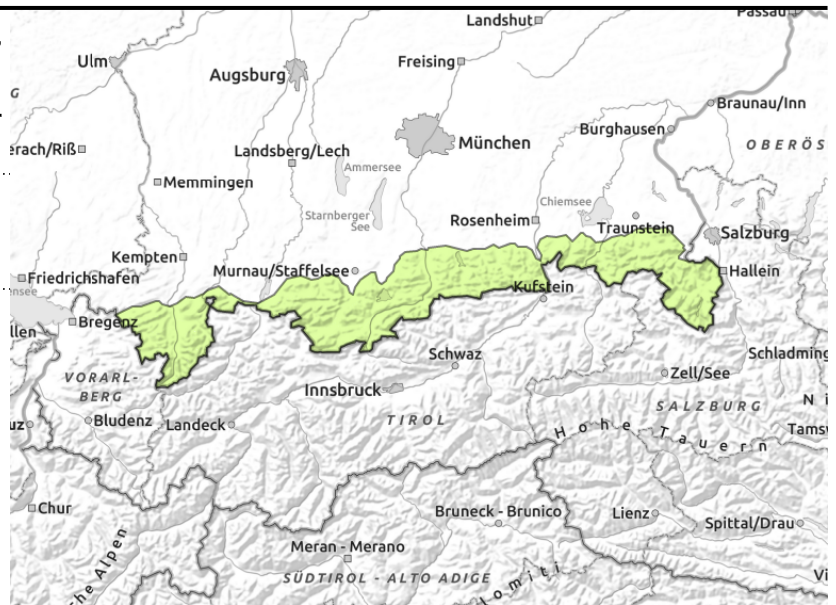
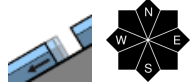


Expositions



Avalanche report for Tuesday, 21.03.2023, morning

Bayerische Voralpen West, Bayerische Voralpen Ost, Chiemgauer Alpen West, Chiemgauer Alpen Ost, Bayerische Voralpen Mitte, Ammergauer Alpen, Berchtesgadener Alpen, Allgäuer Vorberge, Allgäuer Hauptkamm, Werdenfelser Alpen



Backcountry tours should be terminated early in the day

Avalanche danger in the Bavarian mountains rises from low to moderate above 1500 m during the course of the day. Main danger: wet-snow avalanches. In isolated cases, wet snow can be a threat. On very steep slopes where there is enough snow, small wet loose-snow avalanches can trigger naturally. On steep slopes which are smooth, glide-snow avalanches can release. Circumvent glide cracks. Glide-snow avalanches can grow to medium size.

Snowpack structure

The snowpack in Bavaria is thoroughly wet well up to intermediate altitudes and wet down to the ground. Variably cloud skies on Monday night will help a thin melt-freeze crust to form. This will then soften up during the daytime on Tuesday, and the snowpack forfeit firmness, permitting wet-snow and glide-snow avalanches to trigger. At high altitudes there are soft layers which persist beneath older snowdrift accumulations, though these are unlikely to trigger. Small snowdrift patches can still be generated adjacent to ridgelines. Below 1500m there is no longer much snow on the ground.

Outlook

A slight daytime cycle of avalanche danger will persist over coming days, sunshine and warm temperatures will abide.

Avalanche problems



Danger ratings

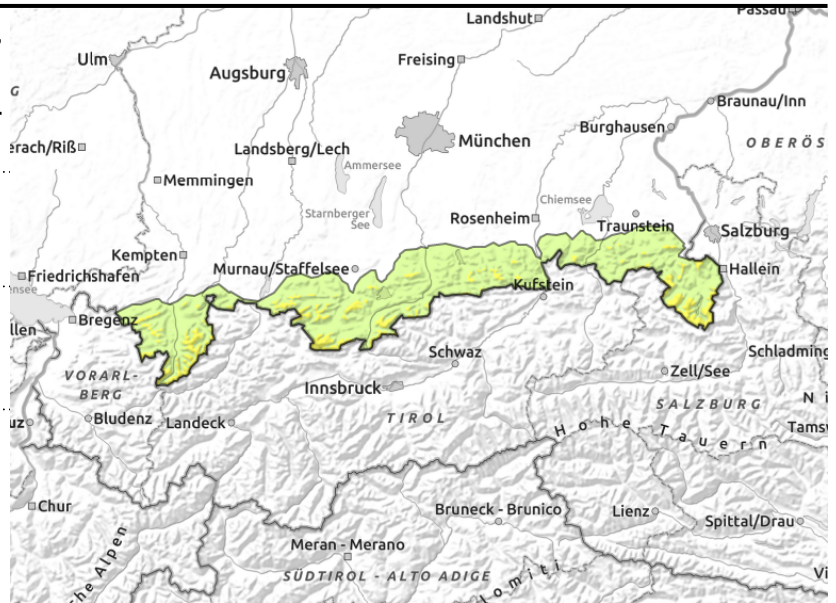
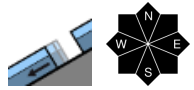
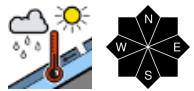
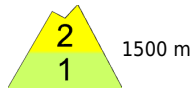


Expositions



Avalanche report for Tuesday, 21.03.2023, afternoon

Bayerische Voralpen West, Bayerische Voralpen Ost, Chiemgauer Alpen West, Chiemgauer Alpen Ost, Bayerische Voralpen Mitte, Ammergauer Alpen, Berchtesgadener Alpen, Allgäuer Vorberge, Allgäuer Hauptkamm, Werdenfelser Alpen



Backcountry tours should be terminated early in the day

Avalanche danger in the Bavarian mountains rises from low to moderate above 1500 m during the course of the day. Main danger: wet-snow avalanches. In isolated cases, wet snow can be a threat. On very steep slopes where there is enough snow, small wet loose-snow avalanches can trigger naturally. On steep slopes which are smooth, glide-snow avalanches can release. Circumvent glide cracks. Glide-snow avalanches can grow to medium size.

Snowpack structure

The snowpack in Bavaria is thoroughly wet well up to intermediate altitudes and wet down to the ground. Variably cloud skies on Monday night will help a thin melt-freeze crust to form. This will then soften up during the daytime on Tuesday, and the snowpack forfeit firmness, permitting wet-snow and glide-snow avalanches to trigger. At high altitudes there are soft layers which persist beneath older snowdrift accumulations, though these are unlikely to trigger. Small snowdrift patches can still be generated adjacent to ridgelines. Below 1500m there is no longer much snow on the ground.

Outlook

A slight daytime cycle of avalanche danger will persist over coming days, sunshine and warm temperatures will abide.

Translated by Jeffrey McCabe, www.creativtrans.com

Avalanche problems



Danger ratings



Expositions

