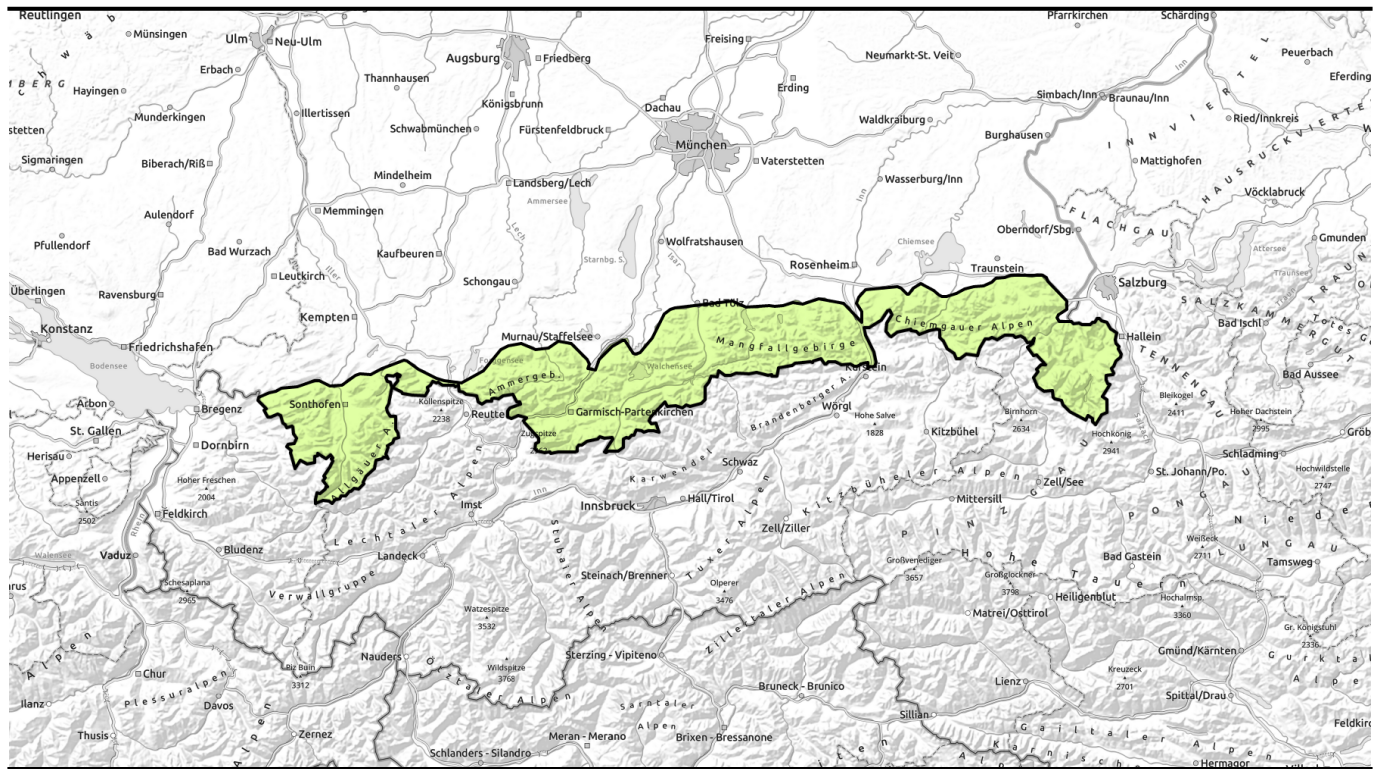


Avalanche report for Monday, 20.03.2023



Low avalanche danger in the Bavarian mountains



Bayerische Voralpen West, Bayerische Voralpen Ost, Chiemgauer Alpen West, Chiemgauer Alpen Ost, Bayerische Voralpen Mitte, Ammergauer Alpen, Berchtesgadener Alpen, Allgäuer Vorberge, Allgäuer Hauptkamm, Werdenfelser Alpen



Avalanche problems



Danger ratings

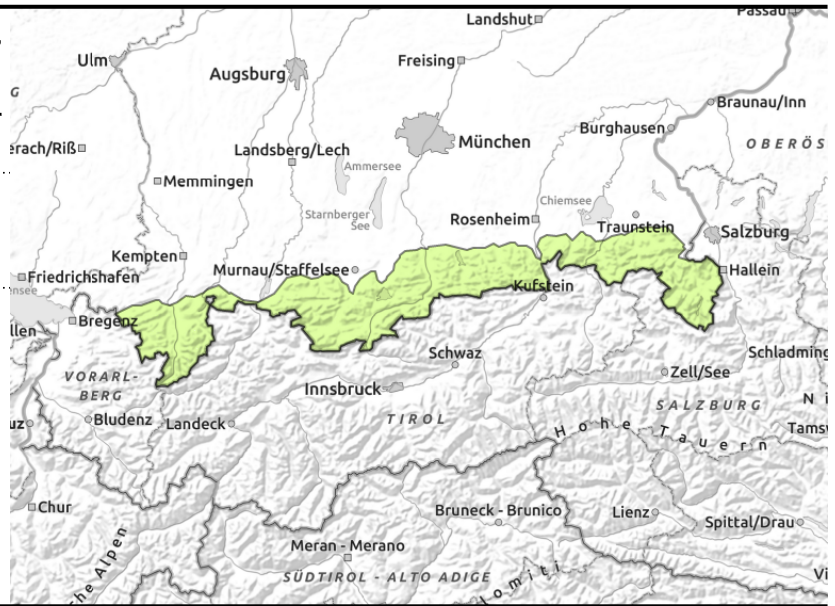
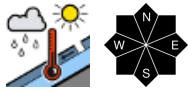


Expositions



Avalanche report for Monday, 20.03.2023

Bayerische Voralpen West, Bayerische Voralpen Ost, Chiemgauer Alpen West, Chiemgauer Alpen Ost, Bayerische Voralpen Mitte, Ammergauer Alpen, Berchtesgadener Alpen, Allgäuer Vorberge, Allgäuer Hauptkamm, Werdenfeller Alpen



Isolated small wet loose-snow and glide-snow avalanches possible

Avalanche danger in the Bavarian mountains is low. In isolated cases, wet snow can be a threat. On very steep slopes where there is enough snow, small wet loose-snow avalanches can trigger naturally. On steep slopes which are smooth, glide-snow avalanches can release. Circumvent glide cracks. Glide-snow avalanches can grow to medium size.

Snowpack structure

The snowpack in Bavaria is thoroughly wet up to intermediate altitudes. At high altitudes there are soft layers which persist beneath older snowdrift accumulations, though these are unlikely to trigger. On shady slopes the snowpack surface still has powder in some places at high altitudes, otherwise there are melt-freeze crusts, breakable crusts and, increasingly as the day unfolds, slushy snow. Below 1500m there is no longer much snow on the ground.

Outlook

As a result of clear nocturnal skies and sunny days, next week will have typical springtime conditions, including a daytime danger cycle for avalanche risks.

Translated by Jeffrey McCabe, www.creativtrans.com

Avalanche problems



Danger ratings



Expositions

