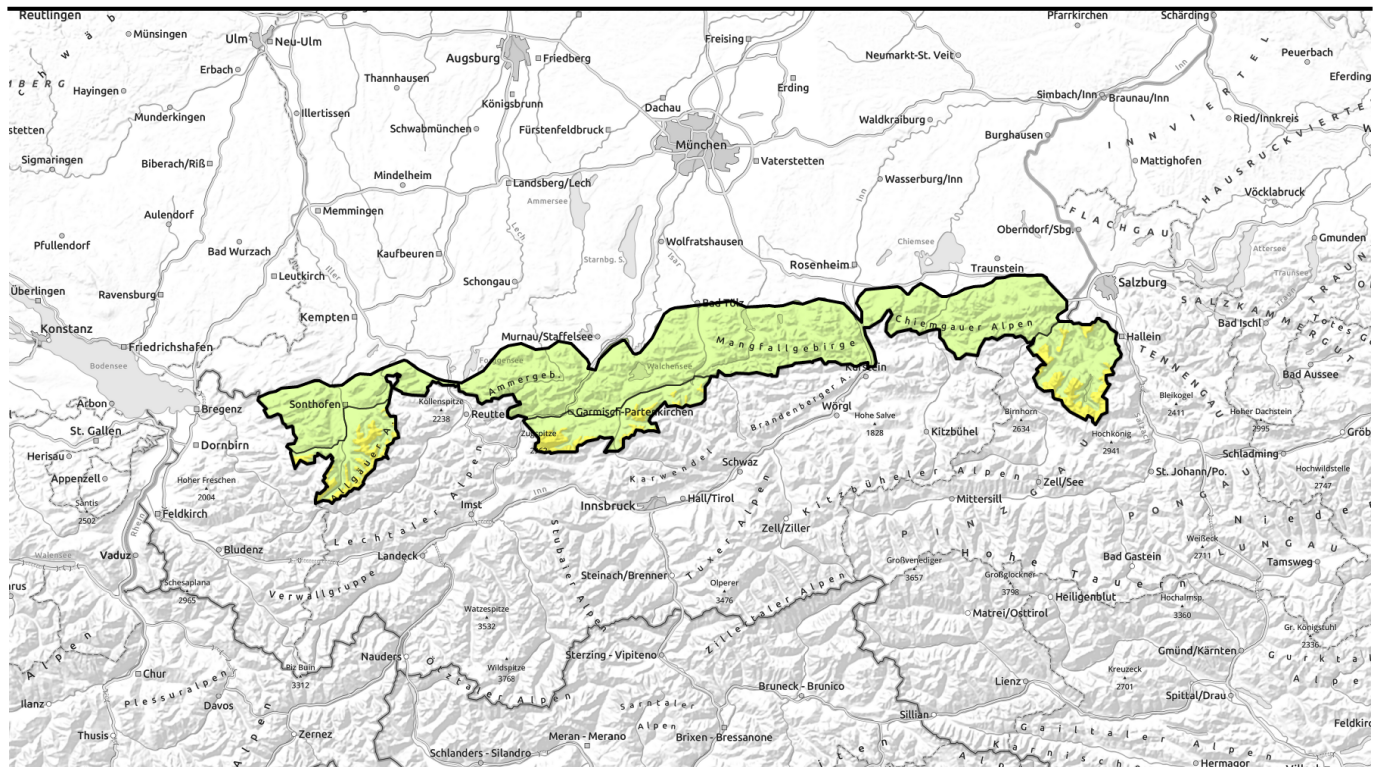
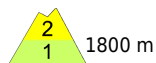


# Avalanche report for Tuesday, 14.03.2023



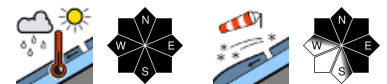
## Some fresh snow and wind: caution urgent towards fresh snowdrifts!



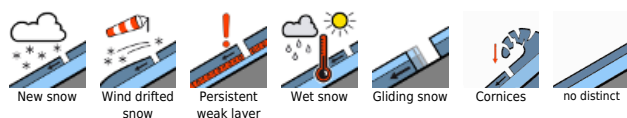
Allgäuer Hauptkamm, Werdenfelser Alpen, Berchtesgadener Alpen



Allgäuer Vorberge, Ammergauer Alpen, Bayerische Voralpen West, Bayerische Voralpen Mitte, Bayerische Voralpen Ost, Chiemgauer Alpen West, Chiemgauer Alpen Ost



### Avalanche problems



### Danger ratings

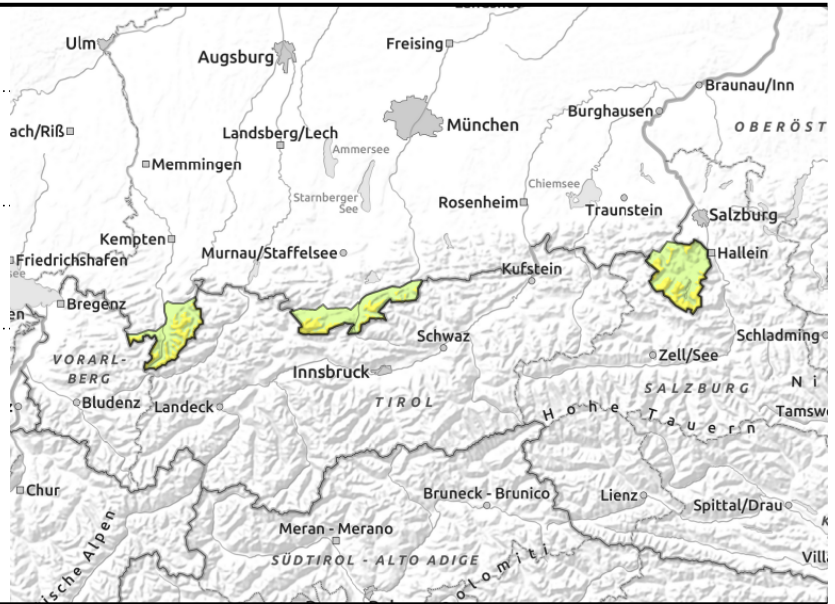
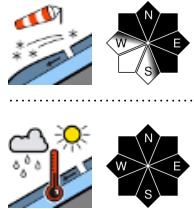


### Expositions



# Avalanche report for Tuesday, 14.03.2023

## Allgäuer Hauptkamm, Werdenfelser Alpen, Berchtesgadener Alpen



### Snowdrifts at higher altitudes; wet snow at intermediate altitudes.

Avalanche danger above 1800 m is moderate, below that altitude danger is low. The main problem are fresh snowdrifts at higher altitudes. They can in some places be triggered even by the weight of one sole person and release a slab avalanche. Avalanche prone locations are found on steep northwest to north to southeast facing slopes adjacent to ridgelines, as well as in freshly wind-loaded gullies and and bowls. In isolated cases avalanches can grow to medium size.

It is possible that isolated wet loose snow or glide snow avalanches trigger naturally in steep rocky terrain as well as on steep grass-covered slopes at intermediate altitudes. Avalanches tend to be small.

### Snowpack structure

Up to high altitudes the old snowpack is thoroughly moist and has settled. Monday night will see the onset of slight precipitations, below 1600 m in the form of rainfall, accompanied by strong wind. At higher altitudes fresh small snowdrift accumulations are generated which will mostly bond well with the moist old snowpack surface. Sometimes, weak intermediate layers are embedded in the fresh and also older snowdrift masses. These can be prone to triggering.

### Outlook

The next few days will be cooler. Strong winds and a bit of new snow will make the snowdrift danger more relevant again.

#### Avalanche problems



#### Danger ratings

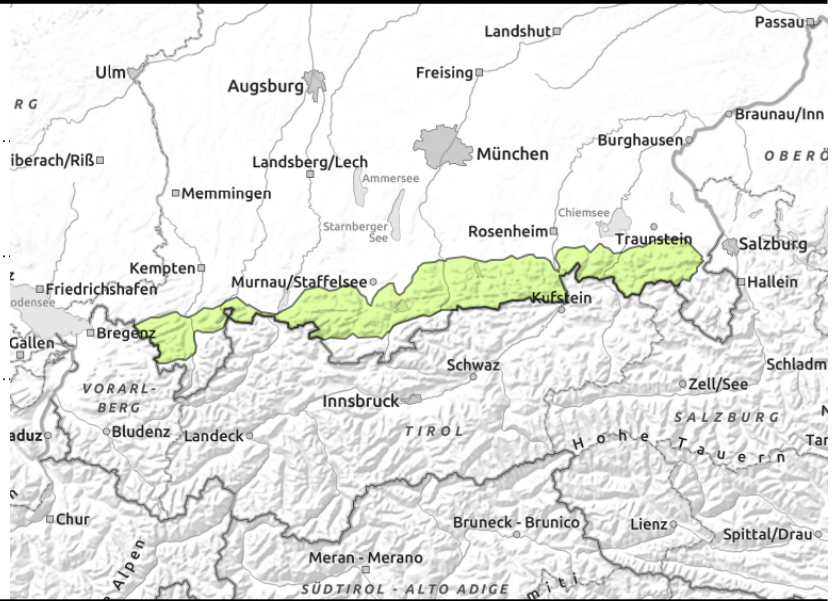
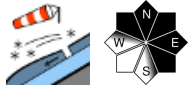
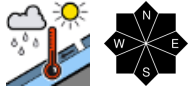


#### Expositions



# Avalanche report for Tuesday, 14.03.2023

Allgäuer Vorberge, Ammergauer Alpen, Bayerische Voralpen West, Bayerische Voralpen Mitte, Bayerische Voralpen Ost, Chiemgauer Alpen West, Chiemgauer Alpen Ost



## Little snow at intermediate altitudes.

Avalanche danger is generally low. Main danger: wet snow. Where there is still sufficient snow, wet loose snow and glide snow avalanches trigger naturally in steep rocky terrain and on steep grass-covered slopes due to rain and moistness. The avalanches are generally small; however, isolated medium-sized avalanches cannot be excluded.

In addition, fresh snowdrifts can be a problem at higher altitudes which can trigger as slab avalanches even by minimum additional loading in some places. Avalanche prone locations are found in particular on steep northwest to north to southeast facing slopes adjacent to ridgelines and in freshly wind-loaded gullies and and bowls. Slab avalanches generally remain small-sized.

### Snowpack structure

Monday night will see the onset of slight precipitations, below 1600 m in the form of rainfall, accompanied by strong wind. At higher altitudes fresh small snowdrift accumulations are generated which will mostly bond well with the moist old snowpack surface. In extremely steep terrain the fresh snowdrifts can be prone to triggering in places.

### Outlook

The next few days will be cooler. Strong winds and a bit of new snow will make the snowdrift danger more relevant again.

Translated by Jeffrey McCabe, [www.creativtrans.com](http://www.creativtrans.com)

#### Avalanche problems



#### Danger ratings



#### Expositions

