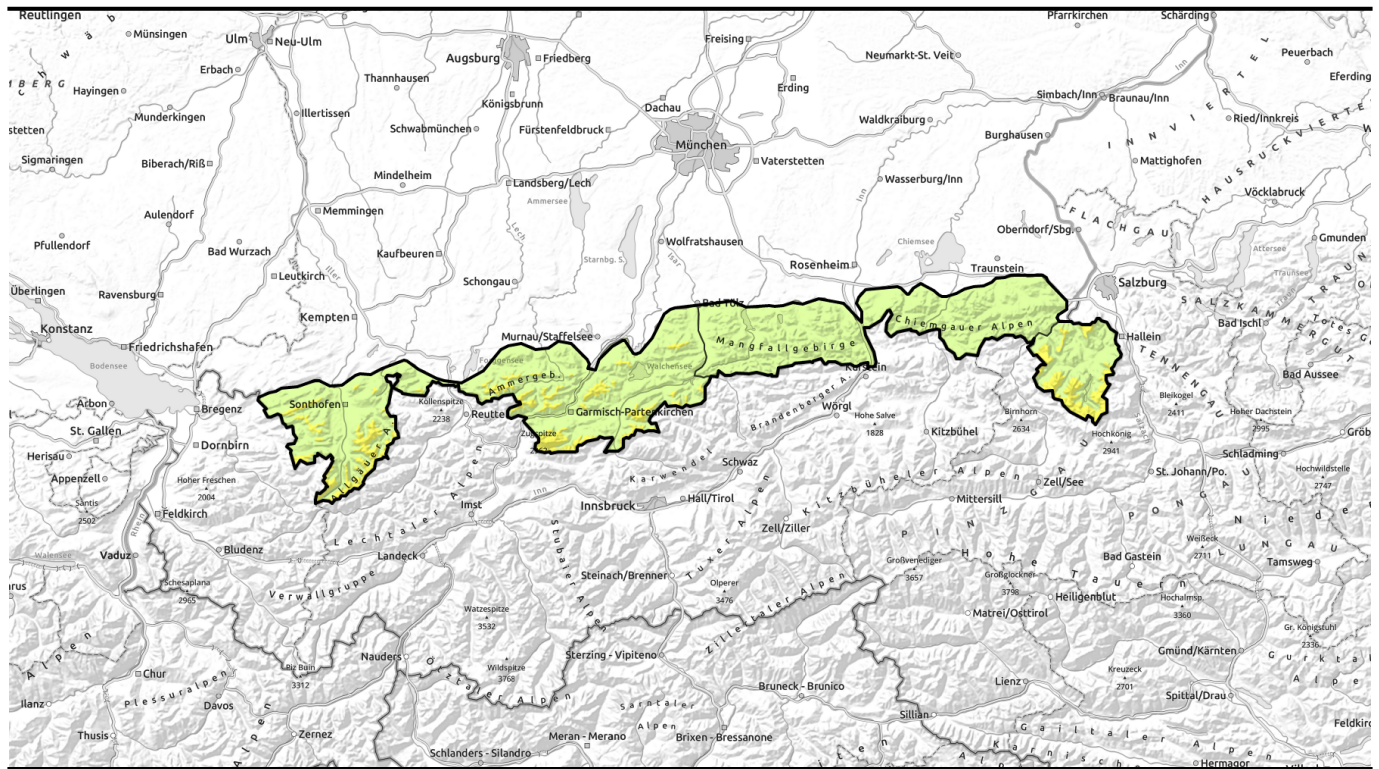






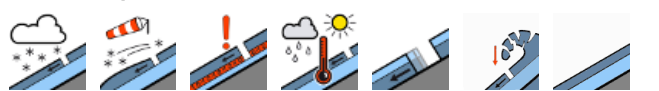

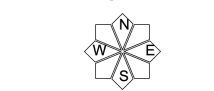


Avalanche report for Saturday, 11.03.2023



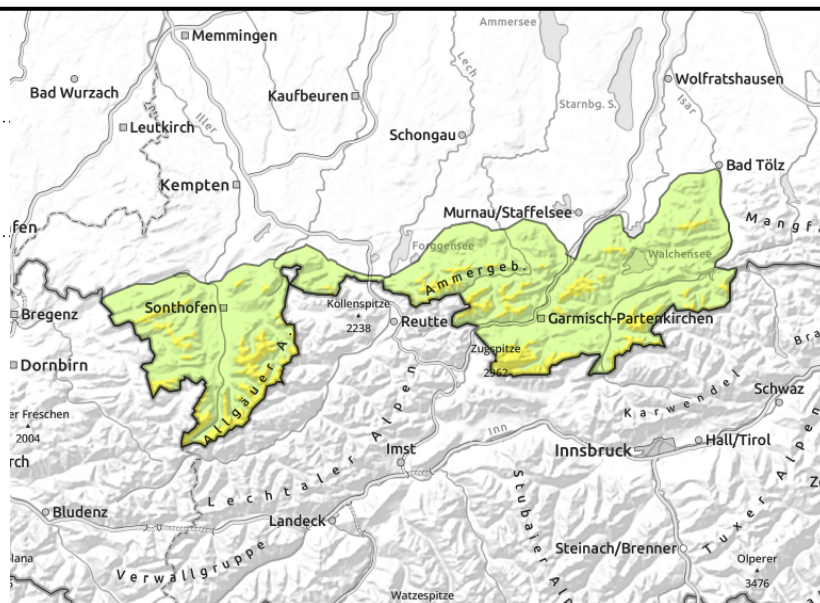
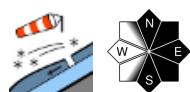
UPDATE: moderate avalanche danger widespread west of the Isar

	forestline Allgäuer Vorberge, Allgäuer Hauptkamm, Ammergauer Alpen, Bayerische Voralpen West, Werdenfeller Alpen	
	Bayerische Voralpen Mitte, Bayerische Voralpen Ost, Chiemgauer Alpen West, Chiemgauer Alpen Ost	
	2000 m Berchtesgadener Alpen	

Avalanche problems 	Danger ratings 	Expositions 
--	---	---

Avalanche report for **Saturday, 11.03.2023**

Allgäuer Vorberge, Allgäuer Hauptkamm, Ammergauer Alpen, Bayerische Voralpen West, Werdenfelser Alpen



Caution urged in steep ridgeline terrain

Avalanche danger above the treeline is moderate, danger is low below that altitude. The fresh snowdrifts are the problem: they can trigger a slab avalanche by minimum additional loading in some places. Danger zones occur in steep ridgeline terrain on N/E/S facing slopes and in wind-loaded gullies and bowls. Frequency and size of the danger zones increase with ascending altitude. Above the treeline, avalanches can reach medium size.

Snowpack structure

Fresh fallen snow and freshly generated snowdrifts lie deposited atop a well settled snowpack, with melt-freeze crust at intermediate altitudes, on south-facing slopes often on bare ground. Strong winds are transporting the fresh snow, generating new snowdrift accumulations. In wind-protected terrain, these are being deposited atop older drifts and soft layers and are prone to triggering. Inside the snowdrift masses weak layers are embedded.

Outlook

Increase in avalanche danger levels at intermediate altitudes due to rain and warmer temperatures on Sunday and on Monday.

Avalanche problems



Danger ratings

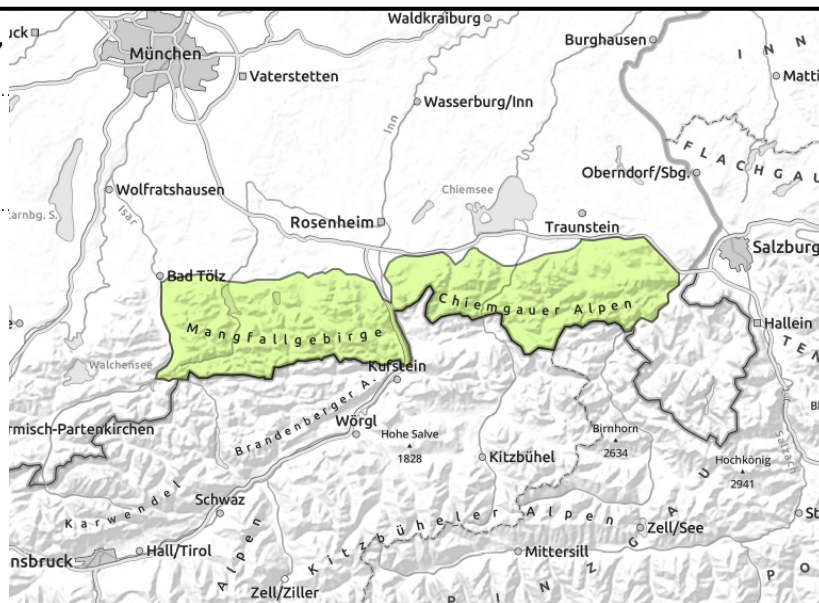
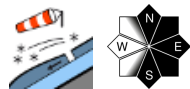


Expositions



Avalanche report for **Saturday, 11.03.2023**

Bayerische Voralpen Mitte, Bayerische Voralpen Ost, Chiemgauer Alpen West, Chiemgauer Alpen Ost



Danger of falls due to small slab avalanches on melt-freeze encrusted surfaces

Avalanche danger is low. The fresh snowdrifts are the problem: they can trigger a slab avalanche by minimum additional loading in some places. Danger zones occur in steep ridgeline terrain on N/E/S facing slopes and in wind-loaded gullies and bowls. Slab avalanches generally remain small-sized.

Snowpack structure

Fresh fallen snow and freshly generated snowdrifts lie deposited atop a well settled snowpack, with melt-freeze crust at intermediate altitudes, on south-facing slopes often on bare ground. Strong winds are transporting the fresh snow, generating new snowdrift accumulations. In wind-protected terrain, these are being deposited atop older drifts and soft layers and are prone to triggering. Inside the snowdrift masses weak layers are embedded.

Outlook

Increase in avalanche danger levels at intermediate altitudes due to rain and warmer temperatures on Sunday and on Monday.

Avalanche problems



Danger ratings

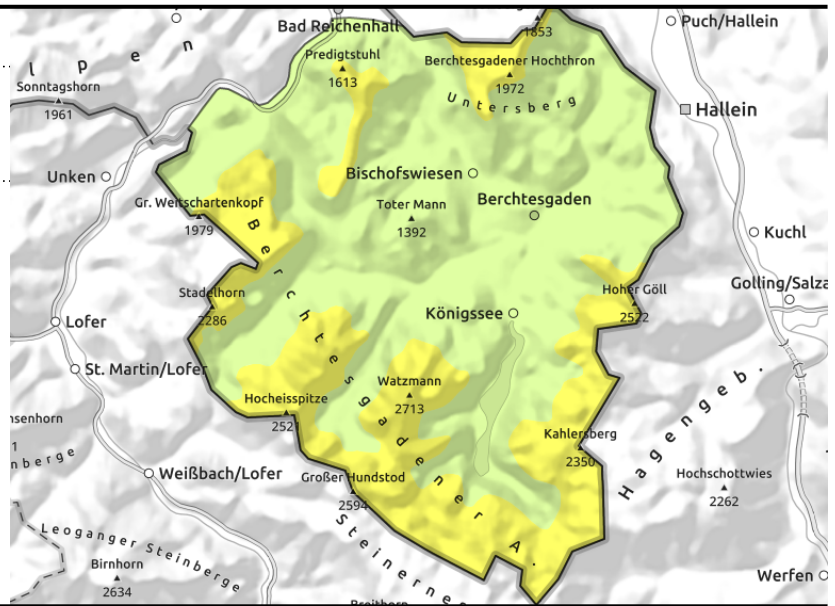
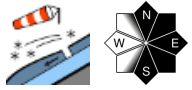


Expositions



Avalanche report for **Saturday, 11.03.2023**

Berchtesgadener Alpen



Fresh snowdrift accumulations at high altitudes are prone to triggering

Avalanche danger above 2000 m is moderate, danger below that altitude is low. The fresh snowdrifts are the problem: they can trigger a slab avalanche by minimum additional loading in some places. Danger zones occur in steep ridgeline terrain on N/E/S facing slopes and in wind-loaded gullies and bowls. Frequency and size of the danger zones increase with ascending altitude. Above the treeline, avalanches can reach medium size.

Snowpack structure

Fresh fallen snow and freshly generated snowdrifts lie deposited atop a well settled snowpack, with melt-freeze crust at intermediate altitudes, on south-facing slopes often on bare ground. Strong winds are transporting the fresh snow, generating new snowdrift accumulations. In wind-protected terrain, these are being deposited atop older drifts and soft layers and are prone to triggering. Inside the snowdrift masses weak layers are embedded.

Outlook

Increase in avalanche danger levels at intermediate altitudes due to rain and warmer temperatures on Sunday and on Monday.

Translated by Jeffrey McCabe, www.creativtrans.com

Avalanche problems



Danger ratings



Expositions

