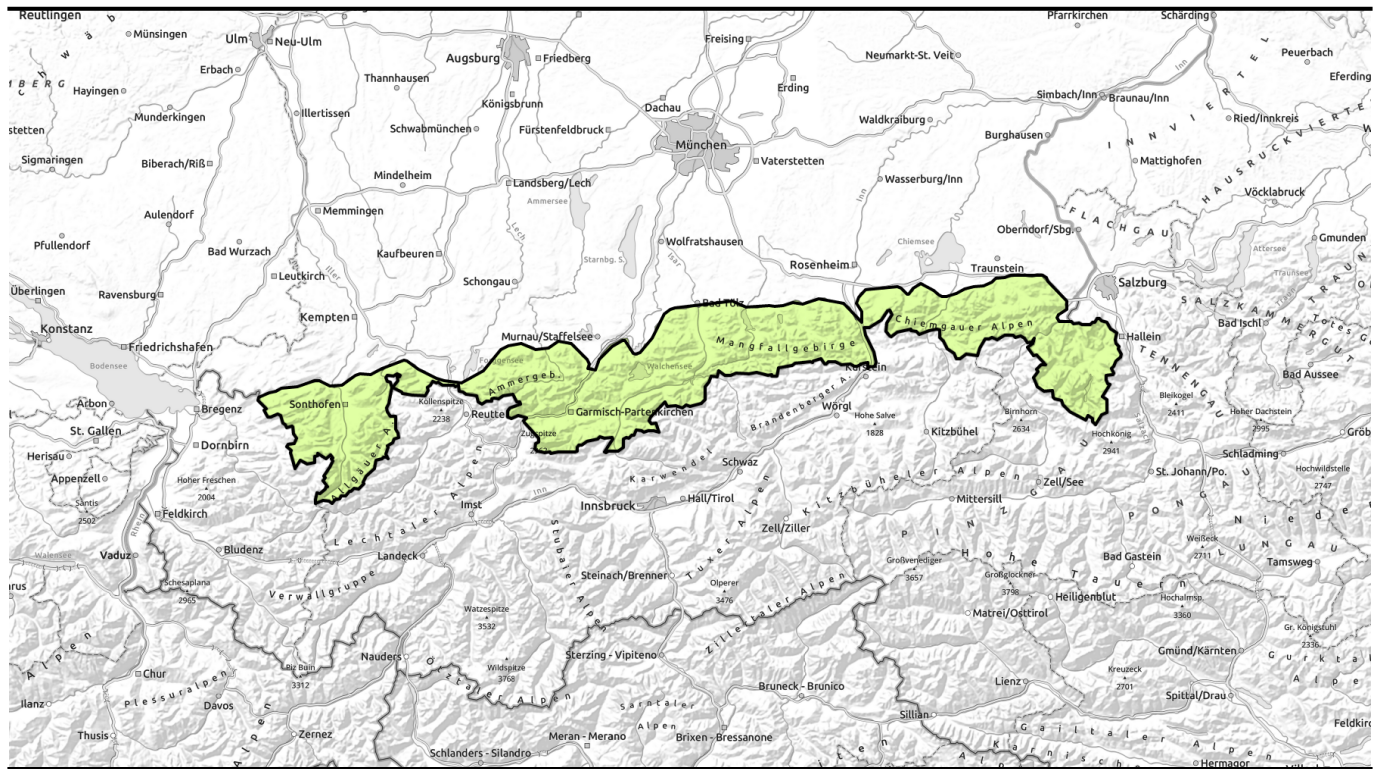


Avalanche report for Monday, 06.03.2023



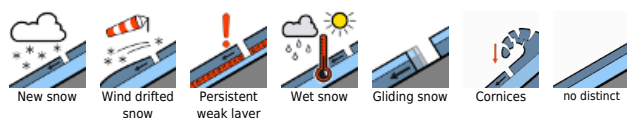
Safe conditions by and large



Bayerische Voralpen Mitte, Bayerische Voralpen Ost, Chiemgauer Alpen West, Chiemgauer Alpen Ost, Allgäuer Vorberge, Ammergauer Alpen, Werdenfeller Alpen, Bayerische Voralpen West, Allgäuer Hauptkamm, Berchtesgadener Alpen



Avalanche problems



Danger ratings

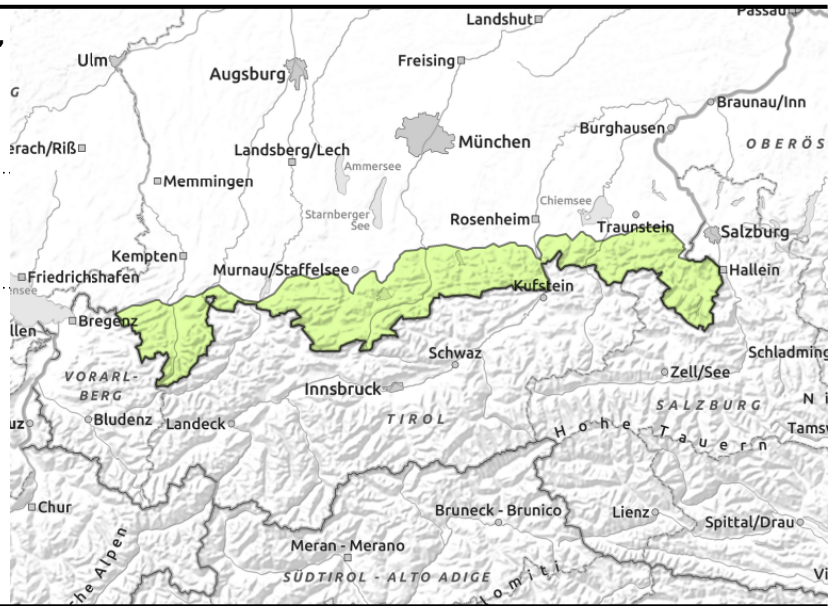
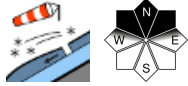


Expositions



Avalanche report for Monday, 06.03.2023

Bayerische Voralpen Mitte, Bayerische Voralpen Ost, Chiemgauer Alpen West, Chiemgauer Alpen Ost, Allgäuer Vorberge, Ammergauer Alpen, Werdenfeller Alpen, Bayerische Voralpen West, Allgäuer Hauptkamm, Berchtesgadener Alpen



Isolated small snowdrift accumulations are triggerable

Avalanche danger is low. Limited-space snowdrifts at heightened altitudes can be problematic. Small slab avalanches can be triggered by large additional loadint near ridgelines on extremely steep shady slopes. Attention urged towards the risks of taking a fall.

Isolated small glide-snow avalanches cannot be ruled out on smooth surfaces.

Snowpack structure

The snowpack has settled well overall, is largely stable. On shady slopes above 1700 m there is still powder. Otherwise a melt-freeze crust forms at night which can soften up during the daytime. At high altitudes there are weak layers near small, older snowdrift accumulations. In highest summit areas in the western Bavarian regions, intensifying winds can generate shallow fresh snowdrift accumulations. At intermediate altitudes the snowpack is often thoroughly wet down to the ground. South-facing slopes are again becoming bare of snow.

Outlook

As a result of precipitation in mid-week, avalanche danger will again increase. Until then, the situation is tranquil.

Translated by Jeffrey McCabe, www.creativtrans.com

Avalanche problems



Danger ratings



Expositions

