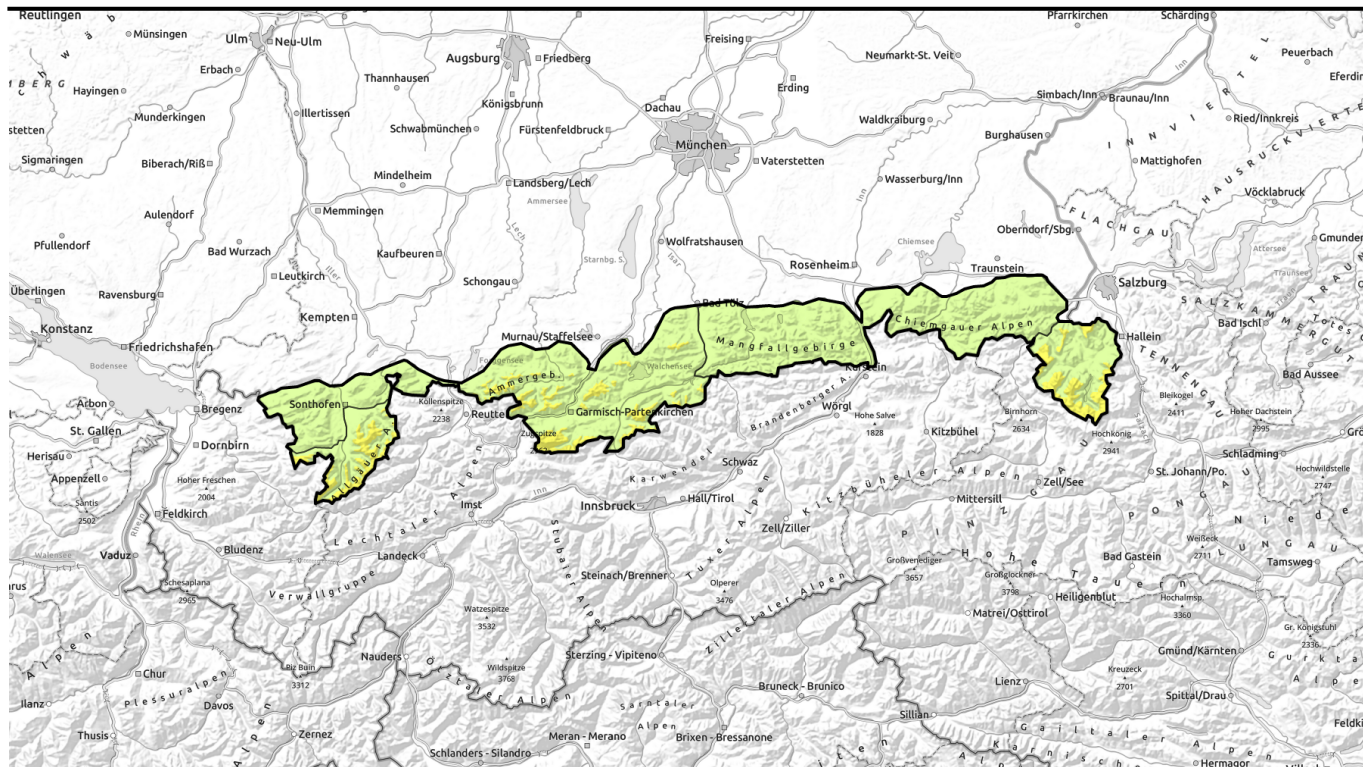


Avalanche report for Thursday, 02.03.2023



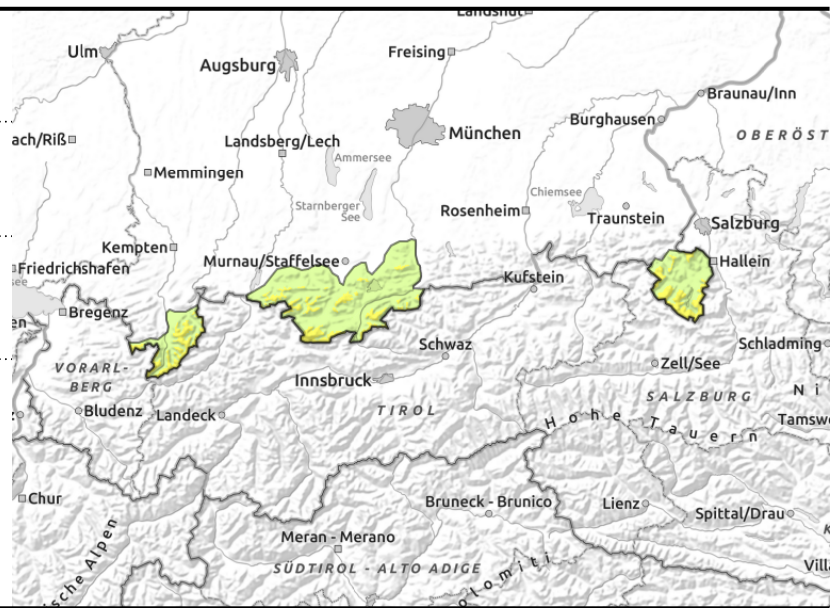
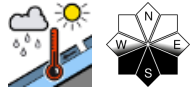
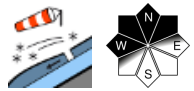
Snowpack settling more and more.

	<p>1800 m Berchtesgadener Alpen, Ammergauer Alpen, Werdenfeller Alpen, Allgäuer Hauptkamm, Bayerische Voralpen West</p>	
	<p>Bayerische Voralpen Mitte, Bayerische Voralpen Ost, Chiemgauer Alpen West, Chiemgauer Alpen Ost, Allgäuer Vorberge</p>	

Avalanche problems	Danger ratings	Expositions

Avalanche report for Thursday, 02.03.2023

Berchtesgadener Alpen, Ammergauer Alpen, Werdenfeller Alpen, Allgäuer Hauptkamm, Bayerische Voralpen West



Snowdrift accumulations in places still prone to triggering.

Avalanche danger above 1800 m is moderate, below that altitude danger is low. The main problem are snowdrifts. On a few extremely steep slopes, primarily adjacent to ridgelines in NE/N/W aspects as well as in wind-loaded gullies and bowls, medium-sized slab avalanches can be triggered in particular by large additional loading such as by a group of skiers not maintaining distances.

In addition, isolated wet loose snow avalanches can trigger naturally on extremely steep rocky and sun-exposed slopes or glide snow avalanches on steep grass-covered slopes. Avalanches tend to be small.

Snowpack structure

Small-scale snowdrift accumulations were locally deposited atop soft layers consisting of graupel or decomposing and fragmented precipitation particles. These can still be prone to triggering. Elsewhere the snowpack has settled considerably and stabilized in particular at low and intermediate altitudes. At intermediate altitude the snowpack base is partly moist and thus promotes gliding movements of the snow masses over smooth surfaces. In south-facing terrain a melt-freeze crust forms during the night which melts again during the course of the day. This means that the snowpack becomes wet in steep sunny rocky terrain.

Outlook

As a consequence of stable high pressure weather and milder temperatures the snowpack will continue to settle and the danger of dry slab avalanches will decrease, also at higher altitudes.

Avalanche problems



Danger ratings

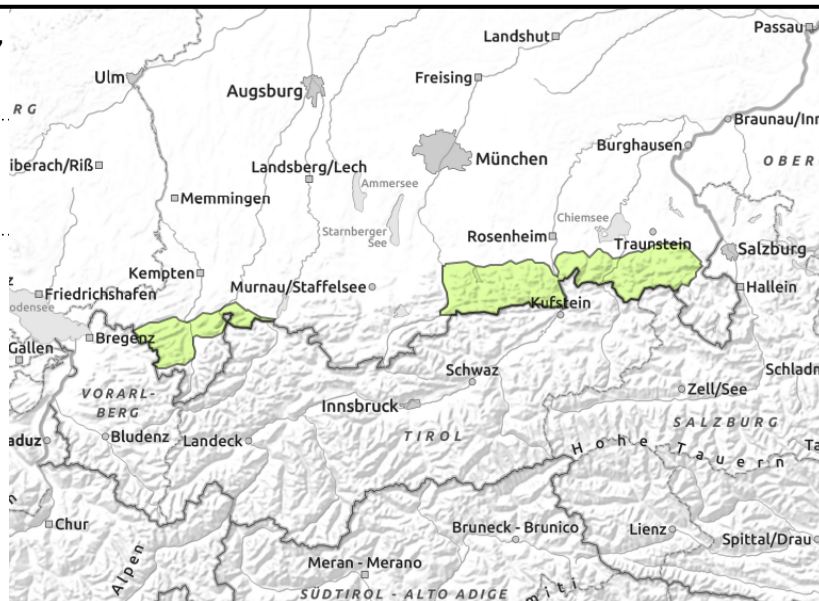
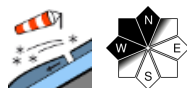


Expositions



Avalanche report for Thursday, 02.03.2023

Bayerische Voralpen Mitte, Bayerische Voralpen Ost, Chiemgauer Alpen West, Chiemgauer Alpen Ost, Allgäuer Vorberge



Favorable conditions for backcountry tours

Avalanche danger is low. In isolated cases snowdrift accumulations can still be a problem. On a few extremely steep slopes, in particular adjacent to ridgelines in N/W aspects as well as in wind-loaded gullies and bows, relatively small slab avalanches can be triggered, mostly by large additional loading.

In addition, isolated small wet loose snow or glide snow avalanches can trigger naturally on sun-exposed slopes. Avalanche activity will increase slightly in line with the daytime danger cycle.

Snowpack structure

All in all, the snowpack has settled well and is by and large stable. In shady terrain the snow is powdery, in sunny terrain it is encrusted in the morning, in the afternoon the snowpack surface is wet. Adjacent to ridgelines snowdrift accumulations are partly still prone to triggering, in particular where deposited atop soft layers or where weak layers are embedded. At intermediate altitude the snowpack base is frequently wet and thus enables gliding movements of the snow masses over smooth surfaces.

Outlook

For the time being avalanche danger remains low.

Translated by Jeffrey McCabe, www.creativtrans.com

Avalanche problems



Danger ratings



Expositions

