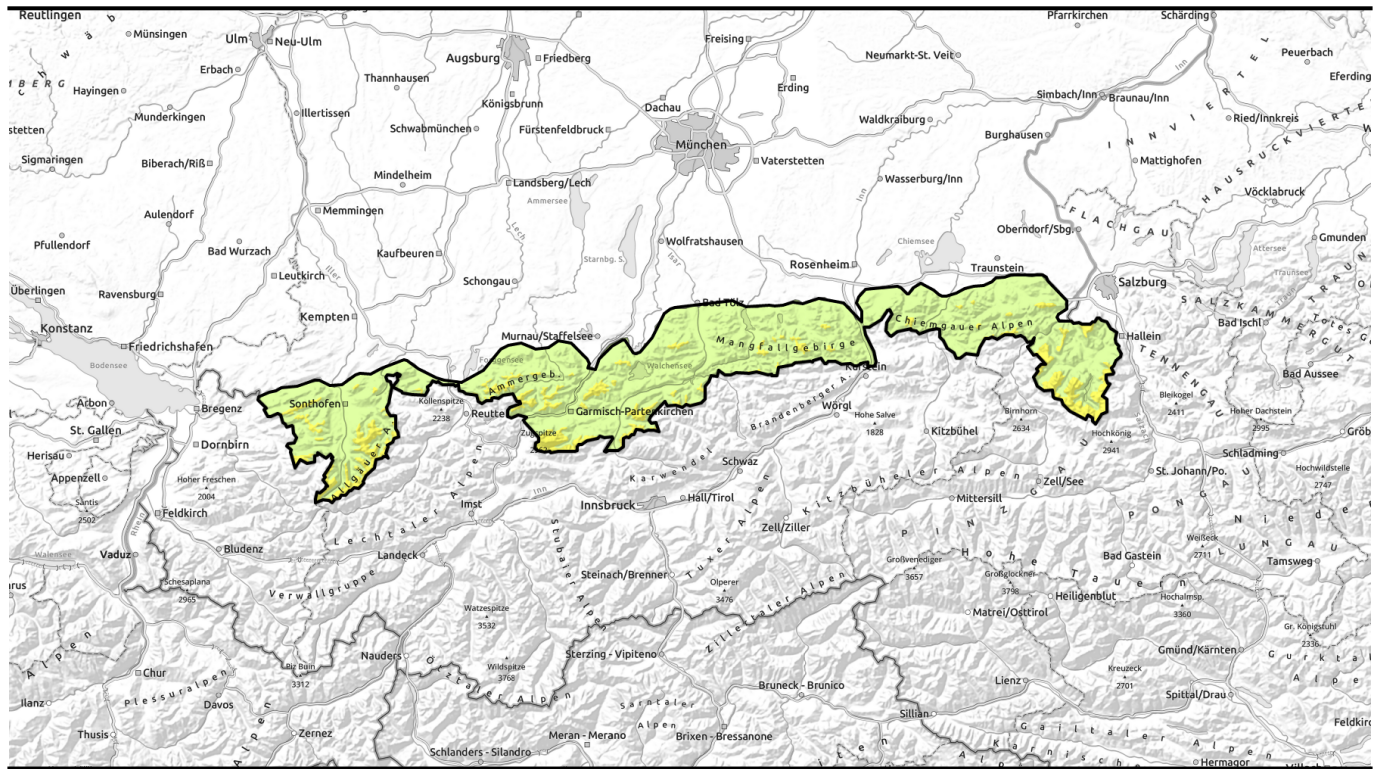
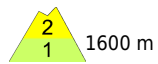


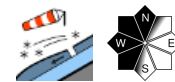
Avalanche report for Wednesday, 01.03.2023, morning



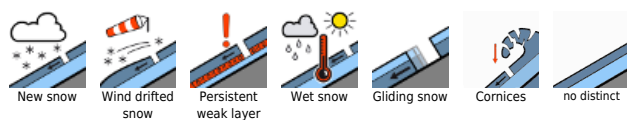
Snowpack has settled well; avalanche danger decreases.



Berchtesgadener Alpen, Bayerische Voralpen Mitte, Bayerische Voralpen Ost, Chiemgauer Alpen West, Chiemgauer Alpen Ost, Bayerische Voralpen West, Ammergau Alpen, Werdenfeller Alpen, Allgäuer Vorberge, Allgäuer Hauptkamm



Avalanche problems



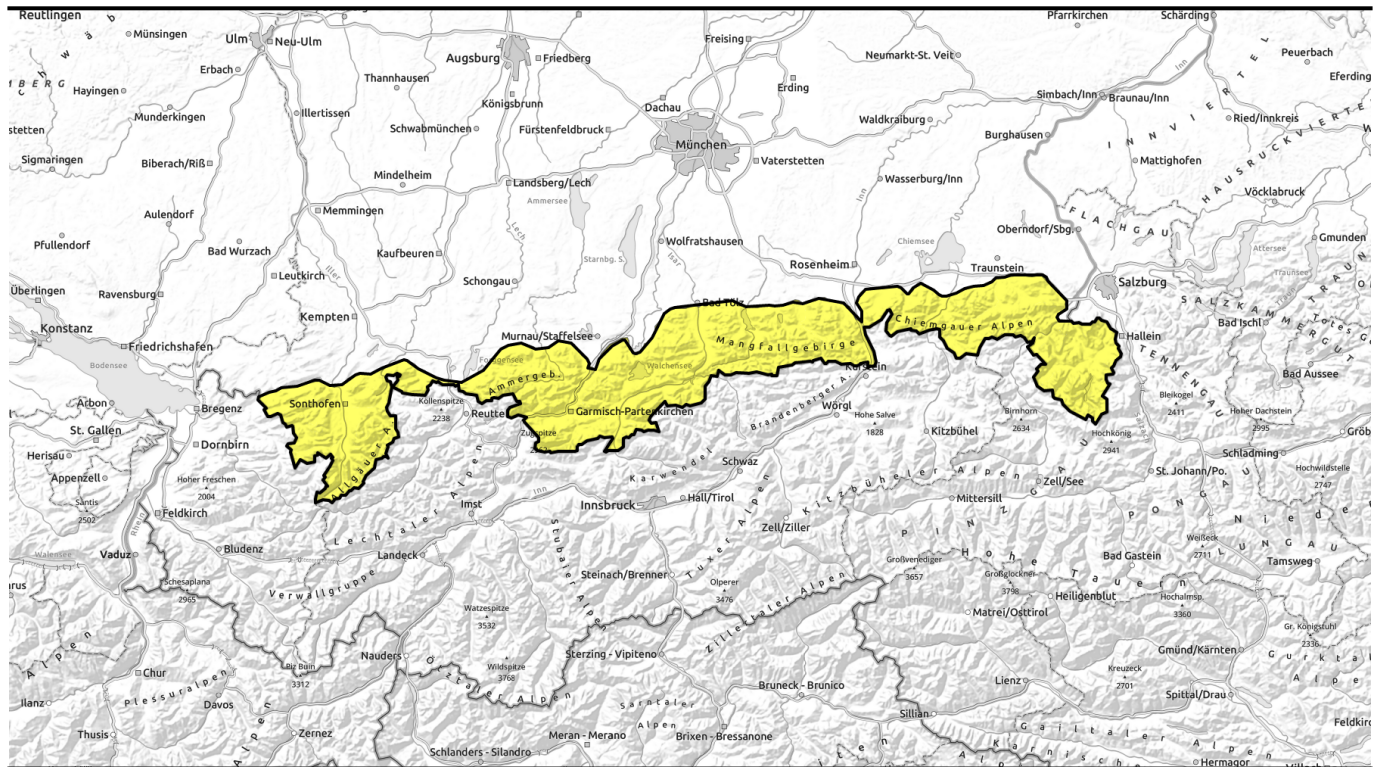
Danger ratings



Expositions



Avalanche report for Wednesday, 01.03.2023, afternoon



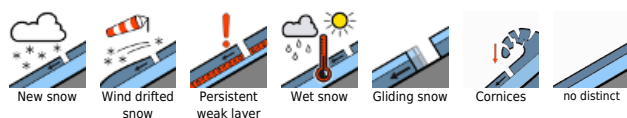
Deutliche Setzung der Schneedecke und Rückgang der Lawinengefahr



Berchtesgadener Alpen, Bayerische Voralpen Mitte, Bayerische Voralpen Ost, Chiemgauer Alpen West, Chiemgauer Alpen Ost, Bayerische Voralpen West, Ammergauer Alpen, Werdenfeller Alpen, Allgäuer Vorberge, Allgäuer Hauptkamm



Avalanche problems



Danger ratings

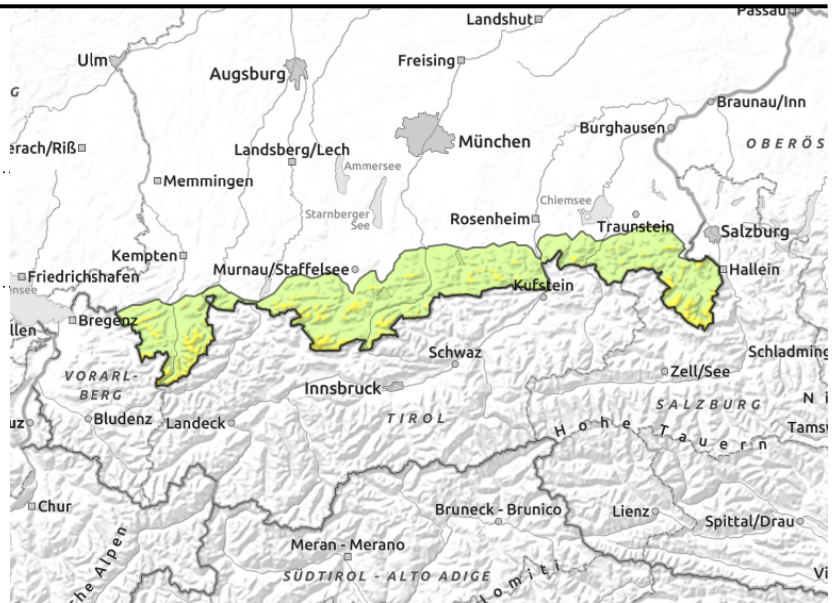
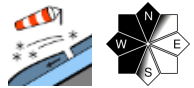


Expositions



Avalanche report for Wednesday, 01.03.2023, morning

Berchtesgadener Alpen, Bayerische Voralpen Mitte, Bayerische Voralpen Ost, Chiemgauer Alpen West, Chiemgauer Alpen Ost, Bayerische Voralpen West, Ammergauer Alpen, Werdenfelser Alpen, Allgäuer Vorberge, Allgäuer Hauptkamm



Slab avalanches at higher altitudes; glide snow and loose snow avalanches in lower lying areas.

Avalanche danger above 1600 m is moderate; below that altitude it rises from low to moderate during the course of the day. The main problem are snowdrifts. On some very steep slopes, in particular adjacent to ridgelines in N/W/SW aspects as well as in wind-loaded gullies and bowls, slab avalanches of medium size can be triggered by minimum additional loading such as by the weight of a single skier.

In addition, wet loose snow avalanches can release naturally on extremely steep sun-exposed rocky slopes. The highest avalanche activity is expected in the afternoon. This is when isolated glide snow avalanches will also start sliding over steep meadows. Avalanches tend to be small.

Snowpack structure

The snow of the weekend has settled considerably and has stabilized especially at lower altitudes. Where the snow was transported by wind snowdrifts accumulated which were locally deposited atop soft layers consisting of graupel or decomposing and fragmented precipitation particles. Spatially-limited these can be prone to triggering. At intermediate altitude the snowpack base is frequently wet and thus promotes gliding movements of the snow masses over smooth surfaces. In south-facing terrain a thin melt-freeze crust forms during the night which melts again during the course of the day. The snow will then become superficially wet on sunny slopes and will lose its firmness.

Outlook

As a consequence of stable high pressure weather and milder temperatures the snowpack will continue to settle and the danger of slab avalanches will decrease.

Avalanche problems



Danger ratings

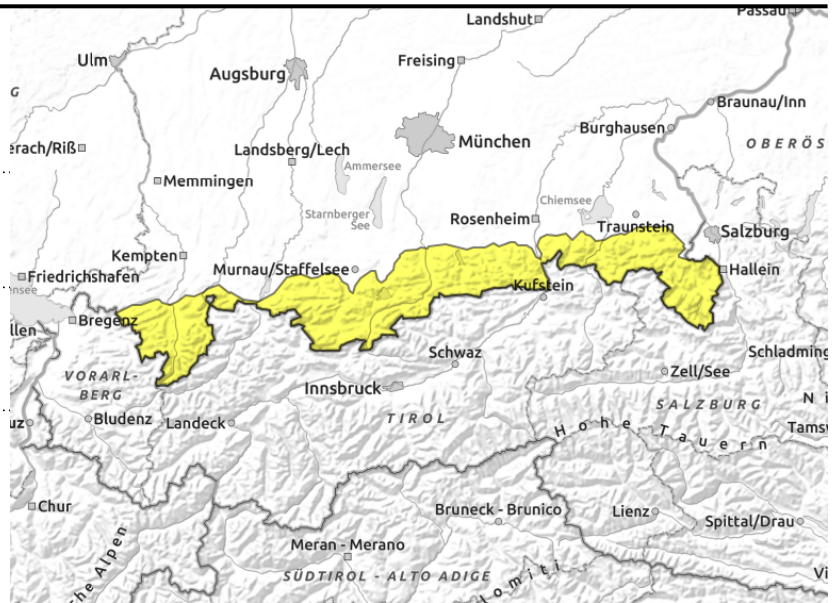
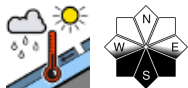
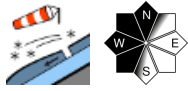


Expositions



Avalanche report for Wednesday, 01.03.2023, afternoon

Berchtesgadener Alpen, Bayerische Voralpen Mitte, Bayerische Voralpen Ost, Chiemgauer Alpen West, Chiemgauer Alpen Ost, Bayerische Voralpen West, Ammergauer Alpen, Werdenfelser Alpen, Allgäuer Vorberge, Allgäuer Hauptkamm



Slab avalanches at higher altitudes; glide snow and loose snow avalanches in lower lying areas.

Avalanche danger above 1600 m is moderate; below that altitude it rises from low to moderate during the course of the day. The main problem are snowdrifts. On some very steep slopes, in particular adjacent to ridgelines in N/W/SW aspects as well as in wind-loaded gullies and bowls, slab avalanches of medium size can be triggered by minimum additional loading such as by the weight of a single skier.

In addition, wet loose snow avalanches can release naturally on extremely steep sun-exposed rocky slopes. The highest avalanche activity is expected in the afternoon. This is when isolated glide snow avalanches will also start sliding over steep meadows. Avalanches tend to be small.

Snowpack structure

The snow of the weekend has settled considerably and has stabilized especially at lower altitudes. Where the snow was transported by wind snowdrifts accumulated which were locally deposited atop soft layers consisting of graupel or decomposing and fragmented precipitation particles. Spatially-limited these can be prone to triggering. At intermediate altitude the snowpack base is frequently wet and thus promotes gliding movements of the snow masses over smooth surfaces. In south-facing terrain a thin melt-freeze crust forms during the night which melts again during the course of the day. The snow will then become superficially wet on sunny slopes and will lose its firmness.

Outlook

As a consequence of stable high pressure weather and milder temperatures the snowpack will continue to settle and the danger of dry slab avalanches will decrease.

Translated by Jeffrey McCabe, www.creativtrans.com

Avalanche problems



Danger ratings



Expositions

