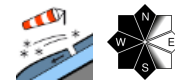


Trigger-sensitive snowdrifts, in particular in western regions



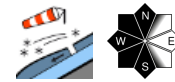
1500 m

Berchtesgadener Alpen, Bayerische Voralpen Mitte, Bayerische Voralpen Ost, Chiemgauer Alpen West, Chiemgauer Alpen Ost



1500 m

Allgäuer Hauptkamm, Werdenfeller Alpen, Ammergauer Alpen, Bayerische Voralpen West, Allgäuer Vorberge



Avalanche problems

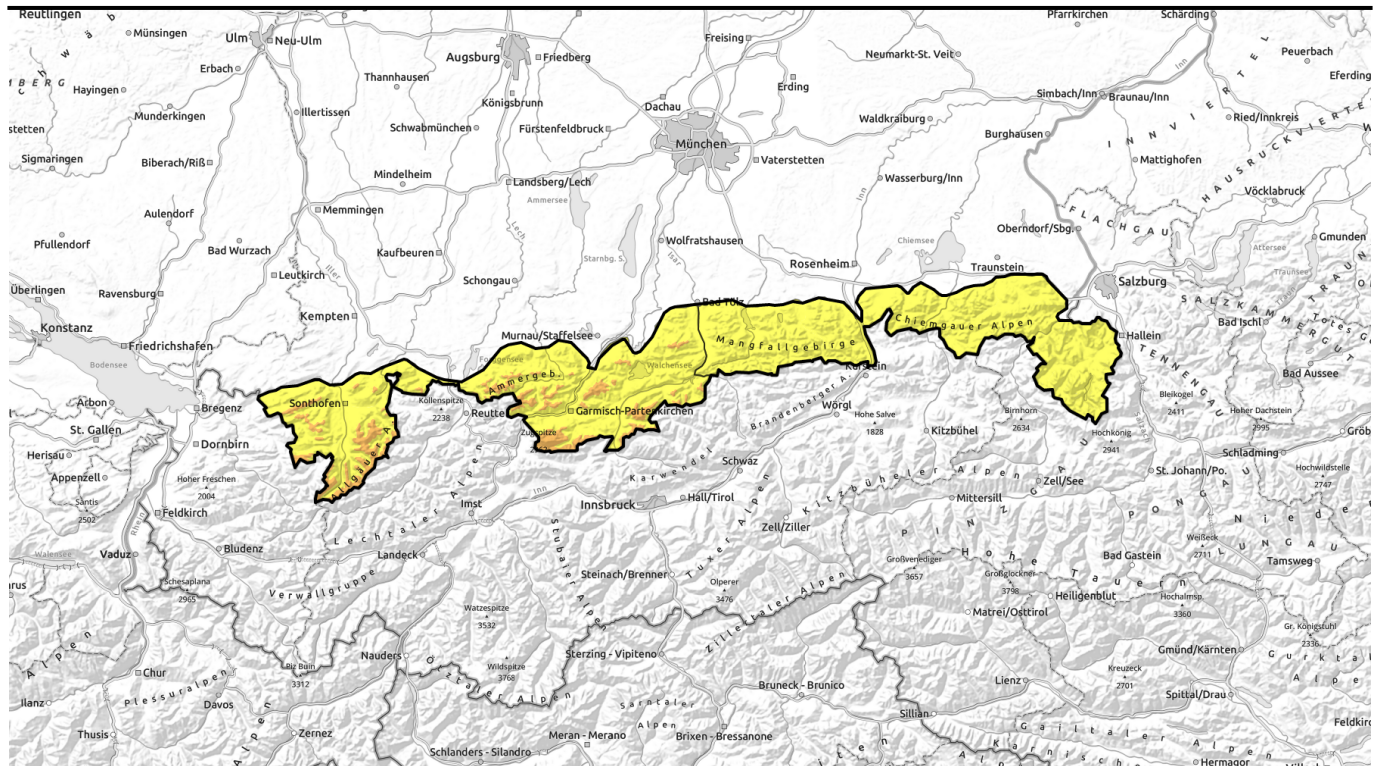


Danger ratings



Expositions





Störanfälliger Triebschnee besonders im Westen



Berchtesgadener Alpen, Bayerische Voralpen Mitte, Bayerische Voralpen Ost, Chiemgauer Alpen West, Chiemgauer Alpen Ost



Allgäuer Hauptkamm, Werdenfelser Alpen, Ammergauer Alpen, Bayerische Voralpen West, Allgäuer Vorberge



1500 m

Avalanche problems



Danger ratings

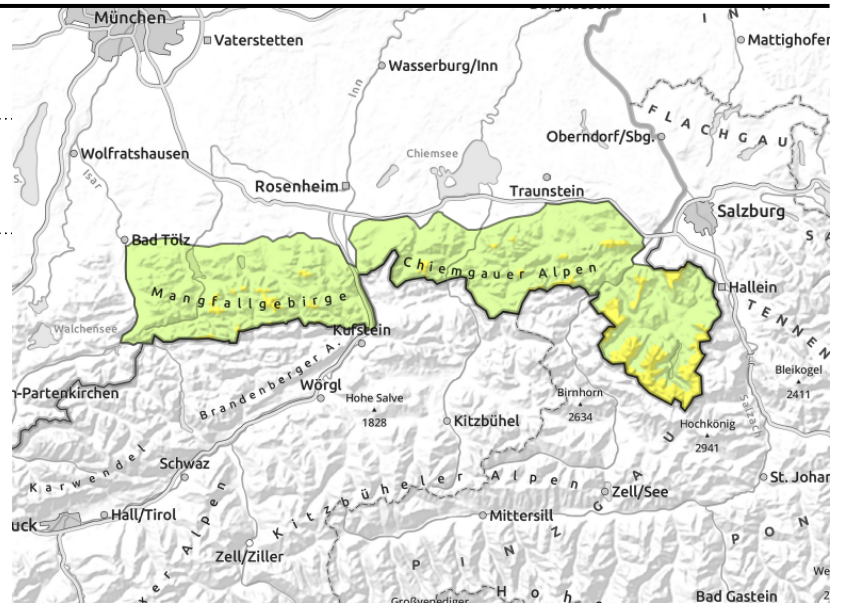
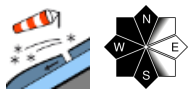


Expositions



Avalanche report for Tuesday, 28.02.2023, morning

Berchtesgadener Alpen, Bayerische Voralpen Mitte, Bayerische Voralpen Ost, Chiemgauer Alpen West, Chiemgauer Alpen Ost



Slab avalanche risk and wet loose snow avalanche danger cycle

Avalanche danger above 1500 m is moderate; below it rises from low to moderate during the course of the day. Main problem: fresh snowdrifts. In some places, particularly in steep ridgeline terrain in N/W/S aspects as well as in wind-loaded gullies and bowls, slab avalanches of medium size can be triggered even by minimum additional loading, such as the weight of one sole skier. Avalanche prone locations tend to increase in size and frequency with ascending altitude.

In addition, loose snow avalanches can release spontaneously on extremely steep slopes. The highest avalanche activity is expected in steep rocky sun-exposed terrain in the afternoon. The first glide snow avalanches will also start sliding over steep meadows. Avalanches tend to be small.

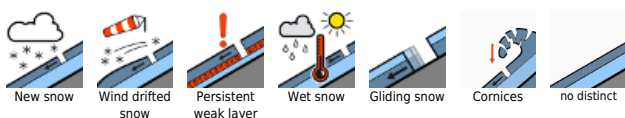
Snowpack structure

At higher altitudes the loose snow has settled somewhat and has been transported by brisk easterly wind; in leeward areas snowdrifts have accumulated. They were deposited atop soft snowpack layers and are partly prone to triggering. Where an old snow cover persisted prior to the last precipitation period it is stable, at intermediate altitudes frequently wet down to the ground. At lower altitudes - and in south-facing terrain almost up to high altitudes - loose snow was deposited on the previously bare ground. During the course of the day, the snow will become superficially wet on sunny slopes and will lose its firmness.

Outlook

As a consequence of stable high pressure weather and milder temperatures the snowpack will settle measurably and avalanche danger will gradually decline.

Avalanche problems



Danger ratings

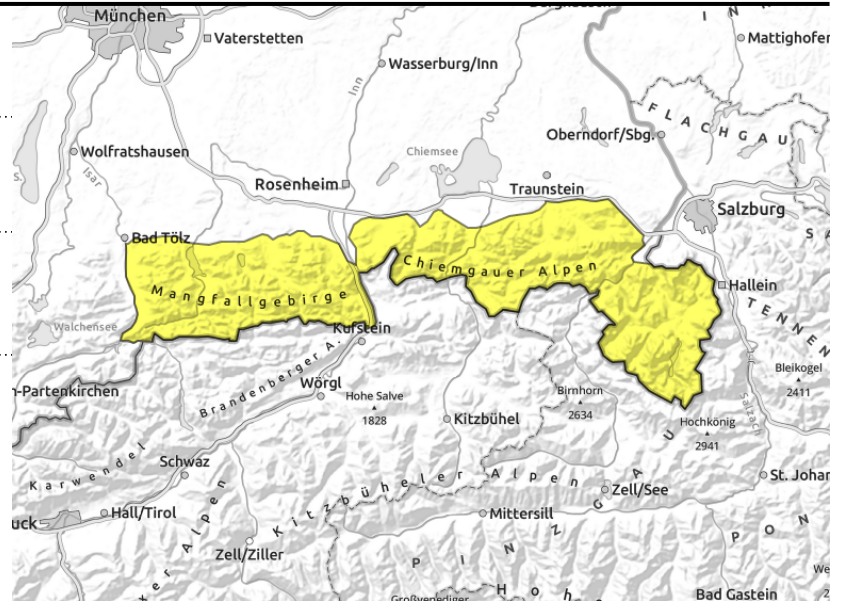
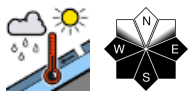
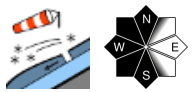


Expositions



Avalanche report for Tuesday, 28.02.2023, afternoon

Berchtesgadener Alpen, Bayerische Voralpen Mitte, Bayerische Voralpen Ost, Chiemgauer Alpen West, Chiemgauer Alpen Ost



Slab avalanche risk and wet loose snow avalanche danger cycle

Avalanche danger above 1500 m is moderate; below it rises from low to moderate during the course of the day. Main problem: fresh snowdrifts. In some places, particularly in steep ridgeline terrain in N/W/S aspects as well as in wind-loaded gullies and bowls, slab avalanches of medium size can be triggered even by minimum additional loading, such as the weight of one sole skier. Avalanche prone locations tend to increase in size and frequency with ascending altitude.

In addition, loose snow avalanches can release spontaneously on extremely steep slopes. The highest avalanche activity is expected in steep rocky sun-exposed terrain in the afternoon. The first glide snow avalanches will also start sliding over steep meadows. Avalanches tend to be small.

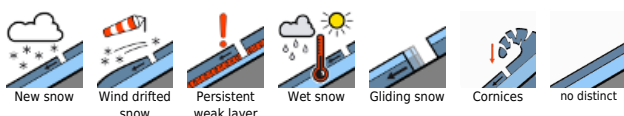
Snowpack structure

At higher altitudes the loose snow has settled somewhat and has been transported by brisk easterly wind; in leeward areas snowdrifts have accumulated. They were deposited atop soft snowpack layers and are partly prone to triggering. Where an old snow cover persisted prior to the last precipitation period it is stable, at intermediate altitudes frequently wet down to the ground. At lower altitudes - and in south-facing terrain almost up to high altitudes - loose snow was deposited on the previously bare ground. During the course of the day, the snow will become superficially wet on sunny slopes and will lose its firmness.

Outlook

As a consequence of stable high pressure weather and milder temperatures the snowpack will settle measurably and avalanche danger will gradually decline.

Avalanche problems



Danger ratings

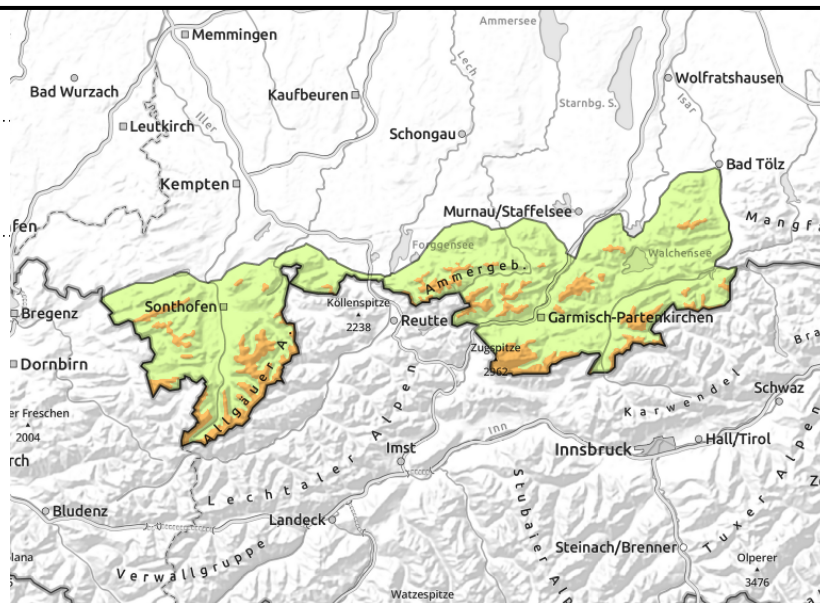
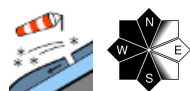


Expositions



Avalanche report for Tuesday, 28.02.2023, morning

Allgäuer Hauptkamm, Werdenfeller Alpen, Ammergauer Alpen, Bayerische Voralpen West, Allgäuer Vorberge



Slab avalanches easily triggerable!

Avalanche danger above 1500 m is considerable; below it rises from low to moderate during the course of the day. Main problem: fresh snowdrifts. Particularly in steep ridgeline terrain in N/W/S aspects as well as in wind-loaded gullies and bowls, but distant from ridgelines also below abrupt discontinuities in the terrain, slab avalanches of medium size can be triggered even by minimum additional loading, such as the weight of one sole skier. Avalanche prone locations tend to increase in size and frequency with ascending altitude. Large avalanches cannot be excluded.

In addition, loose snow avalanches can release spontaneously on extremely steep slopes. The highest avalanche activity is expected in steep rocky sun-exposed terrain in the afternoon. The first glide snow avalanches will then also start sliding over steep meadows. Avalanches tend to be small.

Snowpack structure

At higher altitudes the loose snow has settled somewhat and has been transported by brisk easterly wind; in leeward areas partly extensive snowdrifts accumulated. They were deposited atop soft snowpack layers and are consequently prone to triggering. Where an old snow cover persisted prior to the last precipitation period, it is stable, at intermediate altitudes frequently wet down to the ground. At lower altitudes - and in south-facing terrain almost up to high altitudes - loose snow was deposited on the previously bare ground. During the course of the day, the snow will become wet on sunny slopes and will lose its firmness.

Outlook

As a consequence of stable high pressure weather and milder temperatures the snowpack will settle measurably over the next few days and avalanche danger will decline.

Avalanche problems



Danger ratings

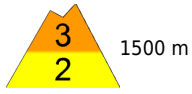


Expositions

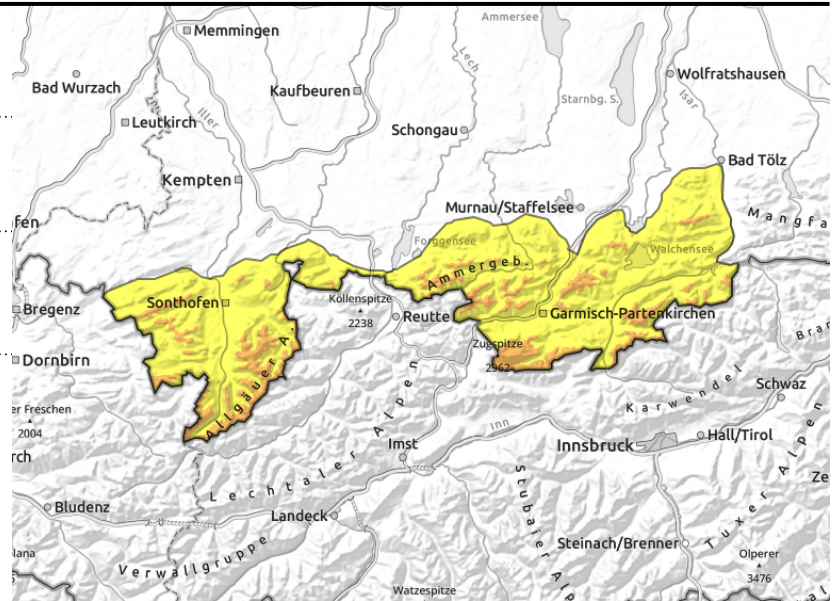
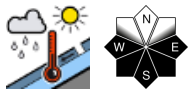
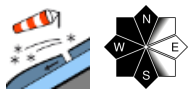


Avalanche report for Tuesday, 28.02.2023, afternoon

Allgäuer Hauptkamm, Werdenfeller Alpen,
Ammergauer Alpen, Bayerische Voralpen West,
Allgäuer Vorberge



1500 m



Slab avalanches easily triggerable!

Avalanche danger above 1500 m is considerable; below it rises from low to moderate during the course of the day. Main problem: fresh snowdrifts. Particularly in steep ridgeline terrain in N/W/S aspects as well as in wind-loaded gullies and bowls, but distant from ridgelines also below abrupt discontinuities in the terrain, slab avalanches of medium size can be triggered even by minimum additional loading, such as the weight of one sole skier. Avalanche prone locations tend to increase in size and frequency with ascending altitude. Large avalanches cannot be excluded.

In addition, loose snow avalanches can release spontaneously on extremely steep slopes. The highest avalanche activity is expected in steep rocky sun-exposed terrain in the afternoon. The first glide snow avalanches will then also start sliding over steep meadows. Avalanches tend to be small.

Snowpack structure

At higher altitudes the loose snow has settled somewhat and has been transported by brisk easterly wind; in leeward areas partly extensive snowdrifts accumulated. They were deposited atop soft snowpack layers and are consequently prone to triggering. Where an old snow cover persisted prior to the last precipitation period, it is stable, at intermediate altitudes frequently wet down to the ground. At lower altitudes - and in south-facing terrain almost up to high altitudes - loose snow was deposited on the previously bare ground. During the course of the day, the snow will become wet on sunny slopes and will lose its firmness.

Outlook

As a consequence of stable high pressure weather and milder temperatures the snowpack will settle measurably over the next few days and avalanche danger will decline.

Translated by Jeffrey McCabe, www.creativtrans.com

Avalanche problems



Danger ratings



Expositions

