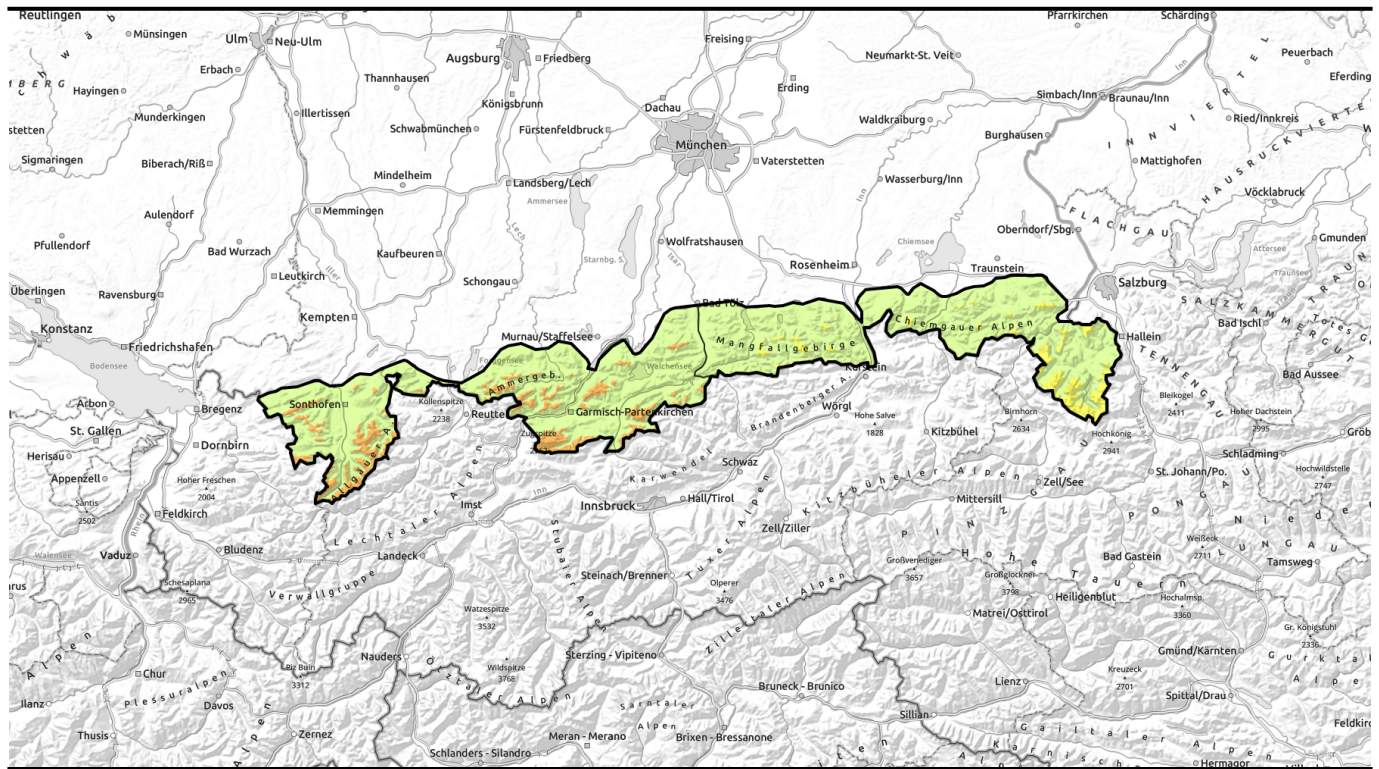












Avalanche report for Monday, 27.02.2023



Large quantities of snow of the weekend now more impacted by wind!

	<p>forestline</p>	<p>Berchtesgaderer Alpen, Bayerische Voralpen Mitte, Bayerische Voralpen Ost, Chiemgauer Alpen West, Chiemgauer Alpen Ost</p>				
	<p>1500 m</p>	<p>Allgäuer Hauptkamm, Werdenfelser Alpen, Ammergauer Alpen, Bayerische Voralpen West, Allgäuer Vorberge</p>				

Avalanche problems



Danger ratings

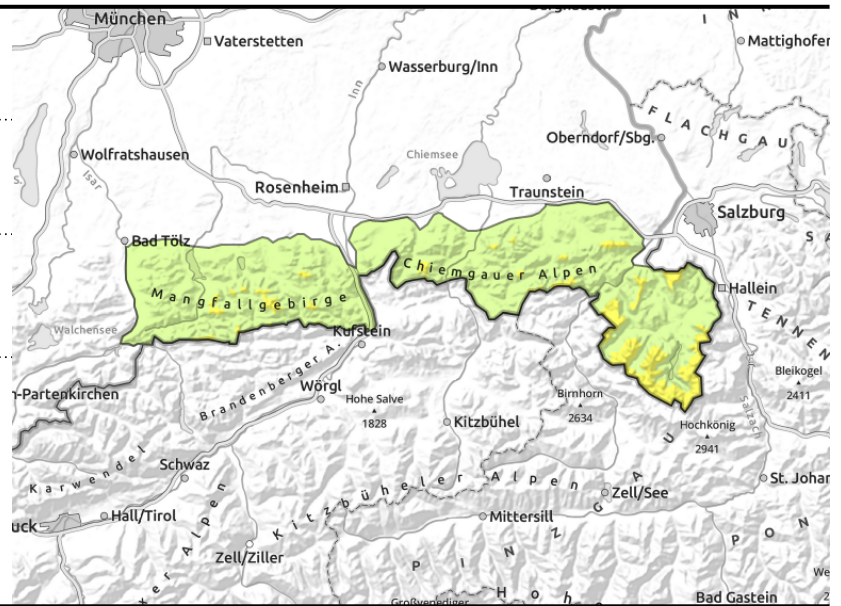
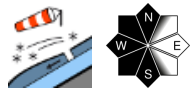


Expositions



Avalanche report for Monday, 27.02.2023

Berchtesgadener Alpen, Bayerische Voralpen Mitte, Bayerische Voralpen Ost, Chiemgauer Alpen West, Chiemgauer Alpen Ost



Snowdrift accumulations in places prone to triggering!

Avalanche danger above the timberline is moderate; below it is low. Main problem: fresh snowdrifts. In particular in steep ridgeline terrain in N/W/S aspects as well as in wind-loaded gullies and bowls medium-sized slab avalanches can be triggered even by minimum additional loading such as the weight of a single skier. Size and frequency of avalanche prone locations increase with ascending altitude and are difficult to detect when blanketed by new snow. In addition, dry loose snow avalanches can trigger naturally in extremely steep terrain in isolated places, or glide snow avalanches can trigger naturally on steep slopes on smooth ground. The avalanches are mostly small.

Snowpack structure

Up to 60 cm loose new snow of the weekend is impacted by moderate easterly wind, thus generating fresh trigger-sensitive snowdrift accumulations. In places, snowdrift layers were also generated over the weekend due to northwesterly winds which were blanketed by new snow. Snowpack analyses prove no marked tendency to fracture propagation. The base of the old snowpack is stable and moist up to high intermediate altitudes; at the ground it is often even wet. In lower lying areas and at higher altitudes in south aspects the new snow of the weekend was deposited on the previously bare ground.

Outlook

Rise of number of spontaneously releasing avalanches due to warmer temperatures and sunshine.

Avalanche problems



Danger ratings

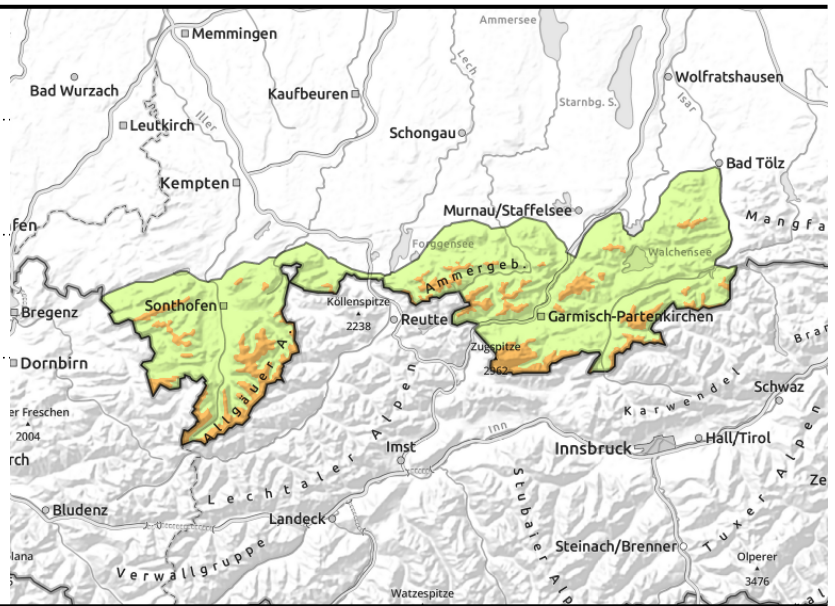
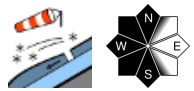
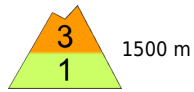


Expositions



Avalanche report for Monday, 27.02.2023

Allgäuer Hauptkamm, Werdenfelser Alpen, Ammergauer Alpen, Bayerische Voralpen West, Allgäuer Vorberge



Snowdrifts prone to triggering!

Avalanche danger above 1500 m is considerable; below that altitude it is low. Main problem: fresh snowdrifts. In particular in steep ridgeline terrain in N/W/S aspects as well as in wind-loaded gullies and bowls, but also distant from ridgelines below abrupt changes in terrain, medium-sized (in isolated cases large) slab avalanches can be triggered even by minimum additional loading such as the weight of a single skier. Size and frequency of avalanche prone locations increase with ascending altitude and are difficult to detect when blanketed by new snow.

In addition, dry loose snow avalanches can trigger naturally in extremely steep terrain in isolated places, or glide snow avalanches can trigger naturally on steep slopes on smooth ground. The avalanches are mostly small.

Snowpack structure

Up to 80 cm of loose new snow of the weekend are impacted by heavy easterly winds, in particular during Sunday night, thus generating fresh trigger-sensitive snowdrift accumulations which are in some places rather large. During the precipitation phase on the weekend and northwesterly wind snowdrift layers formed and were blanketed by new snow. Snowpack analyses prove no marked tendency to fracture propagation. The base of the old snowpack is stable and moist up to high intermediate altitudes; at the ground it is often even wet. In lower lying areas and at higher altitudes in south aspects the new snow of the weekend was deposited on the previously bare ground.

Outlook

Rise of number of spontaneously releasing avalanches due to warmer temperatures and sunshine.

Translated by Jeffrey McCabe, www.creativtrans.com

Avalanche problems



Danger ratings



Expositions

