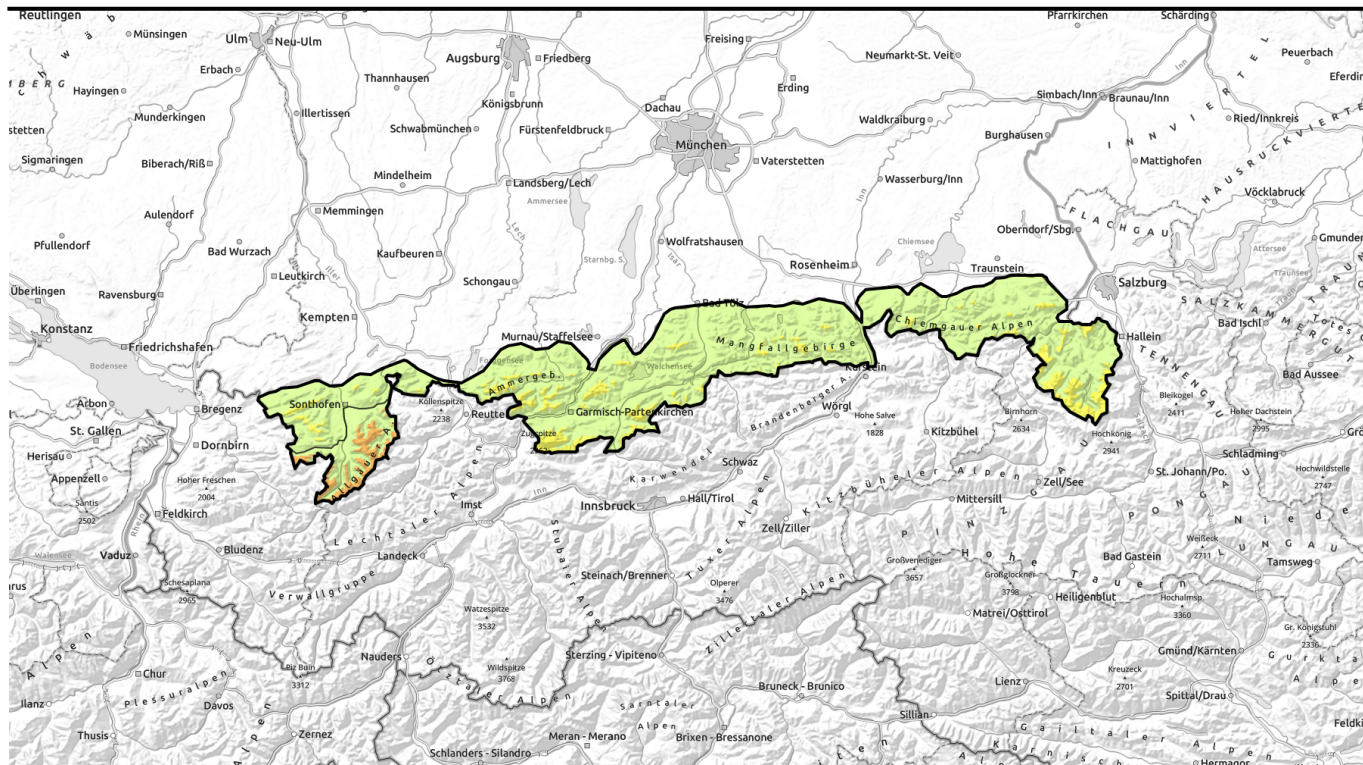


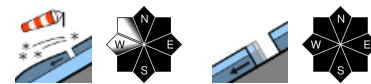
Avalanche report for Saturday, 25.02.2023



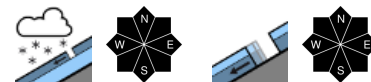
UPDATE: lots of fresh snow in the Allgäu, esp. at high altitudes



Allgäuer Vorberge, Ammergauer Alpen, Werdenfeller Alpen, Bayerische Voralpen West, Bayerische Voralpen Mitte, Bayerische Voralpen Ost, Chiemgauer Alpen West, Chiemgauer Alpen Ost, Berchtesgadener Alpen



Allgäuer Hauptkamm



Avalanche problems



Danger ratings

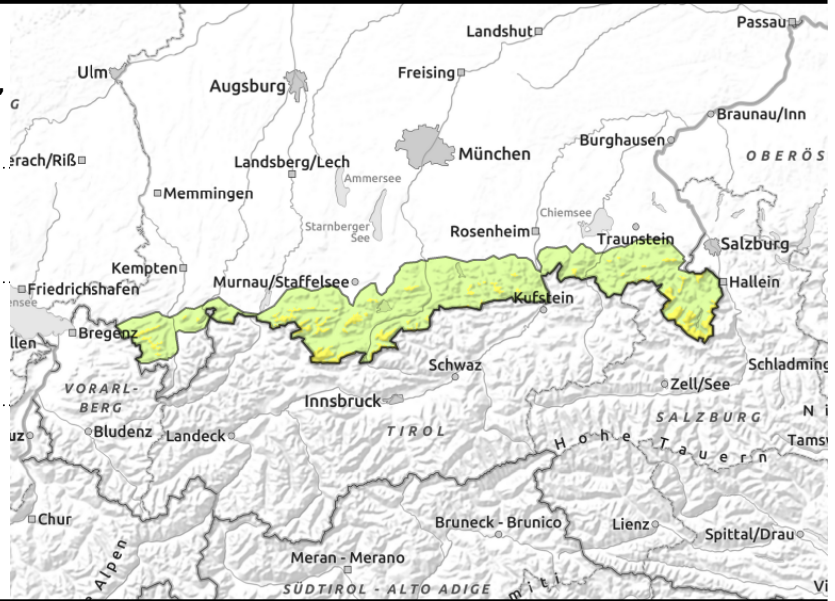
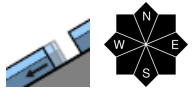
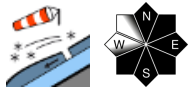
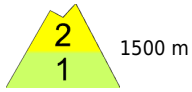


Expositions



Avalanche report for Saturday, 25.02.2023

Allgäuer Vorberge, Ammergauer Alpen, Werdenfeller Alpen, Bayerische Voralpen West, Bayerische Voralpen Mitte, Bayerische Voralpen Ost, Chiemgauer Alpen West, Chiemgauer Alpen Ost, Berchtesgadener Alpen



Caution: fresh snowdrifts

Avalanche danger in the Bavarian Alps is moderate above 1500 m, low below that altitude. Main problem: fresh snowdrift accumulations. Particularly in ridgeline steep terrain, in wind-loaded gullies and bowls and also distant from ridgelines behind abrupt discontinuities in the terrain, slab avalanches of medium size can trigger even by minimum additional loading, e.g. from the weight of one sole skier. Danger zones lie mostly in N/E/SW aspects and tend to increase in size and frequency with ascending altitude.

In addition, at intermediate altitudes on slopes where the ground is smooth, isolated small-to-medium glide-snow avalanches can trigger naturally.

Snowpack structure

The forecast fresh snowfall will arrive accompanied by strong to storm-strength winds and be deposited atop a well settled and often thoroughly wet old snowpack. The surface often is melt-freeze encrusted, well bonded with fresh snow and drifts. On shady slopes the old snowpack surface on wind-protected slopes is often expansively metamorphosed (faceted), of large crystals. Wherever fresh snowdrifts get deposited atop fresh fallen snow in wind-protected regions at all altitudes, the stability of the snowpack is poor. At lower altitudes, on south-facing slopes up well into intermediate altitudes, the snowfall will fall on bare ground.

Outlook

The snowdrift problem will persist awhile.

Avalanche problems



Danger ratings

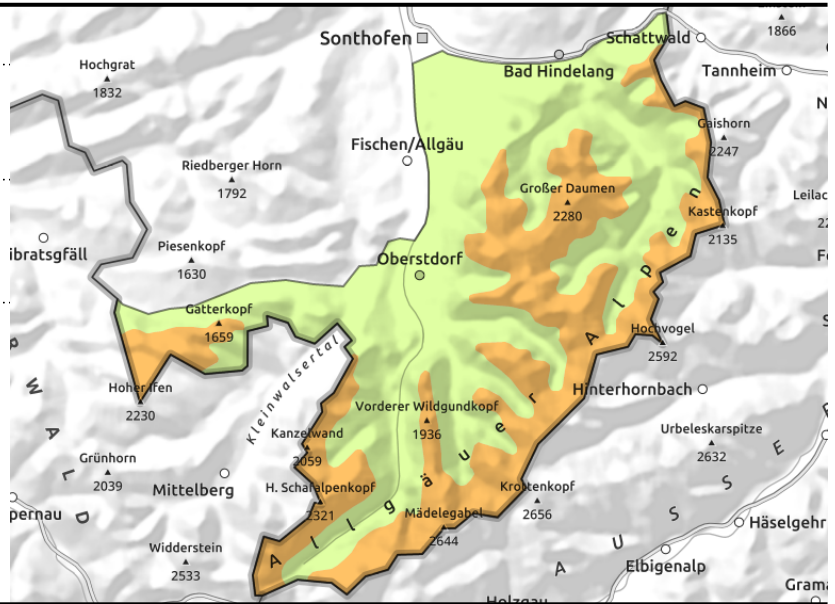
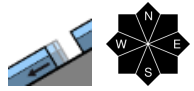
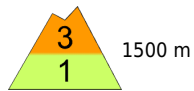


Expositions



Avalanche report for **Saturday, 25.02.2023**

Allgäuer Hauptkamm



Lots of fresh snow at high altitude

Avalanche danger in the Allgäu Alps is considerable above 1500m, below that altitude danger is low. Main problem: immense amounts of fresh snow which fell accompanied by strong winds. Slab avalanches of medium size, in isolated cases of large size, can be triggered even by minimum additional loading, particularly in steep ridgeline zones, wind-loaded gullies and bowls, and distant from ridgelines behind abrupt discontinuities in the terrain. The weight of one skier is sufficient. Danger zones increase in frequency and size with ascending altitude. In addition, loose-snow avalanches can trigger naturally, especially in extremely steep terrain, and grow to large size at high altitudes.

On slopes with smooth ground at intermediate altitudes, small-to-medium glide-snow avalanches can trigger naturally.

Snowpack structure

On Friday night up to 60 cm of fresh snow was registered, particularly at high altitudes in the Allgäu Alps. The fresh fallen snow, accompanied by strong winds, was deposited atop a well settled and often thoroughly wet old snowpack, frequently with melt-freeze crust which bonded well with fresh snow and drifts. On shady slopes the old snowpack surface in wind-protected terrain is often expansively metamorphosed (faceted); in those zones at all altitudes, there is a danger of slab avalanches. Where precipitation has been heaviest, moreover, the critical mass of fresh fallen snow is reached, meaning that loose-snow avalanches can trigger naturally. At low altitudes and on south-facing slopes up to intermediate altitudes, the snowfall was deposited on bare ground.

Outlook

Avalanche danger levels will recede only slowly.

Translated by Jeffrey McCabe, www.creativtrans.com

Avalanche problems



Danger ratings



Expositions

