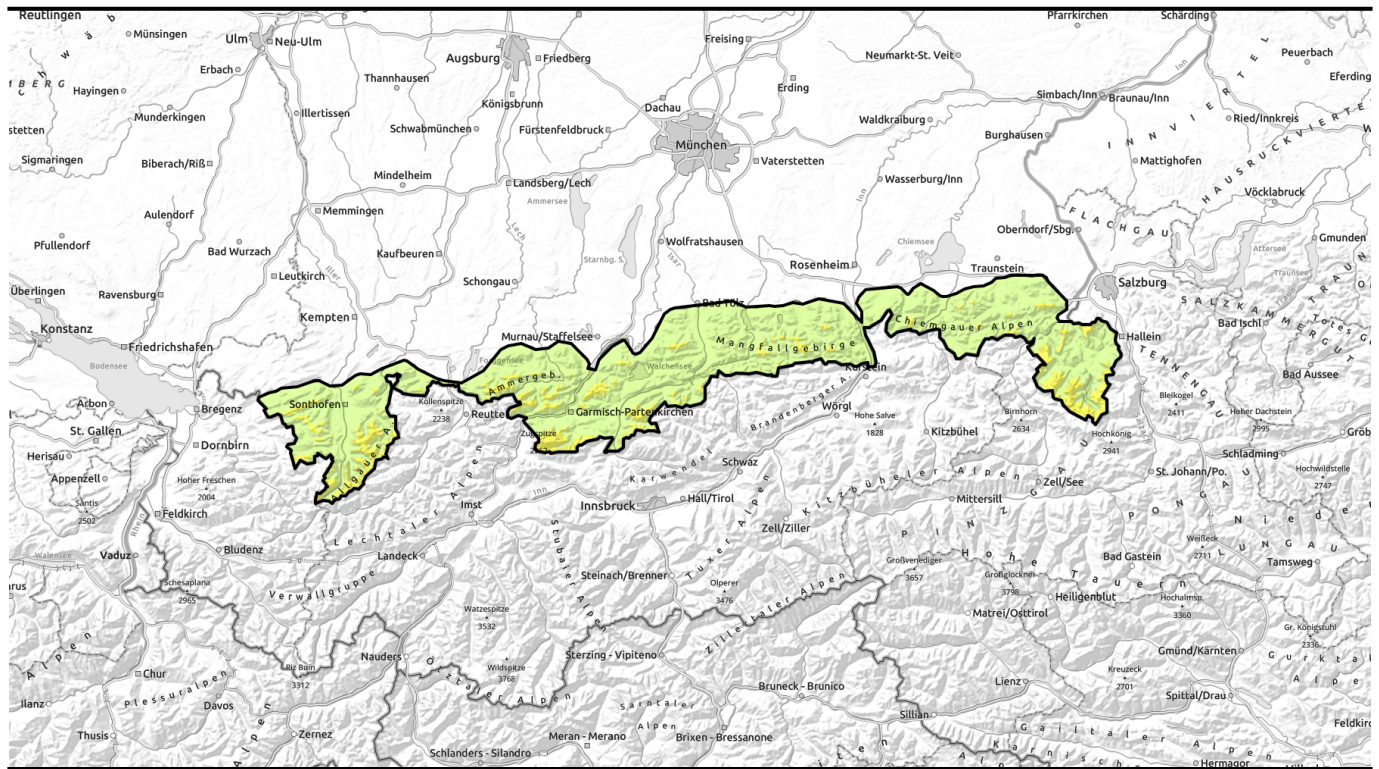


# Avalanche report for **Saturday, 25.02.2023**



## Fresh snow and strong winds



Allgäuer Vorberge, Allgäuer Hauptkamm, Ammergauer Alpen, Werdenfeller Alpen, Bayerische Voralpen West, Bayerische Voralpen Mitte, Bayerische Voralpen Ost, Chiemgauer Alpen West, Chiemgauer Alpen Ost, Berchtesgadener Alpen



### Avalanche problems



### Danger ratings

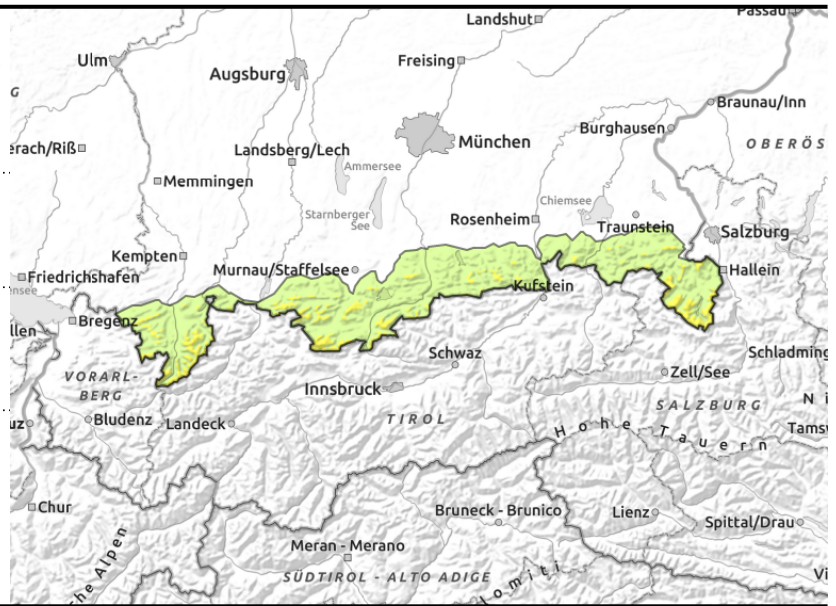
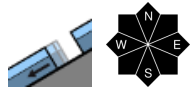
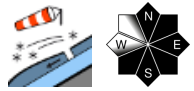


### Expositions



# Avalanche report for **Saturday, 25.02.2023**

**Allgäuer Vorberge, Allgäuer Hauptkamm, Ammergauer Alpen, Werdenfelser Alpen, Bayerische Voralpen West, Bayerische Voralpen Mitte, Bayerische Voralpen Ost, Chiemgauer Alpen West, Chiemgauer Alpen Ost, Berchtesgadener Alpen**



## Caution: fresh snowdrifts

Avalanche danger in the Bavarian Alps is moderate above 1500 m, low below that altitude. Main problem: fresh snowdrift accumulations. Particularly in ridgeline steep terrain, in wind-loaded gullies and bowls and also distant from ridgelines behind abrupt discontinuities in the terrain, slab avalanches of medium size can trigger even by minimum additional loading, e.g. from the weight of one sole skier. Danger zones lie mostly in N/E/SW aspects and tend to increase in size and frequency with ascending altitude.

In addition, at intermediate altitudes on slopes where the ground is smooth, isolated small-to-medium glide-snow avalanches can trigger naturally.

## Snowpack structure

The forecast fresh snowfall will arrive accompanied by strong to storm-strength winds and be deposited atop a well settled and often thoroughly wet old snowpack. The surface often is melt-freeze encrusted, well bonded with fresh snow and drifts. On shady slopes the old snowpack surface on wind-protected slopes is often expansively metamorphosed (faceted), of large crystals. Wherever fresh snowdrifts get deposited atop fresh fallen snow in wind-protected regions at all altitudes, the stability of the snowpack is poor. At lower altitudes, on south-facing slopes up well into intermediate altitudes, the snowfall will fall on bare ground.

## Outlook

The snowdrift problem will persist for awhile.

Translated by Jeffrey McCabe, [www.creativtrans.com](http://www.creativtrans.com)

### Avalanche problems



### Danger ratings



### Expositions

