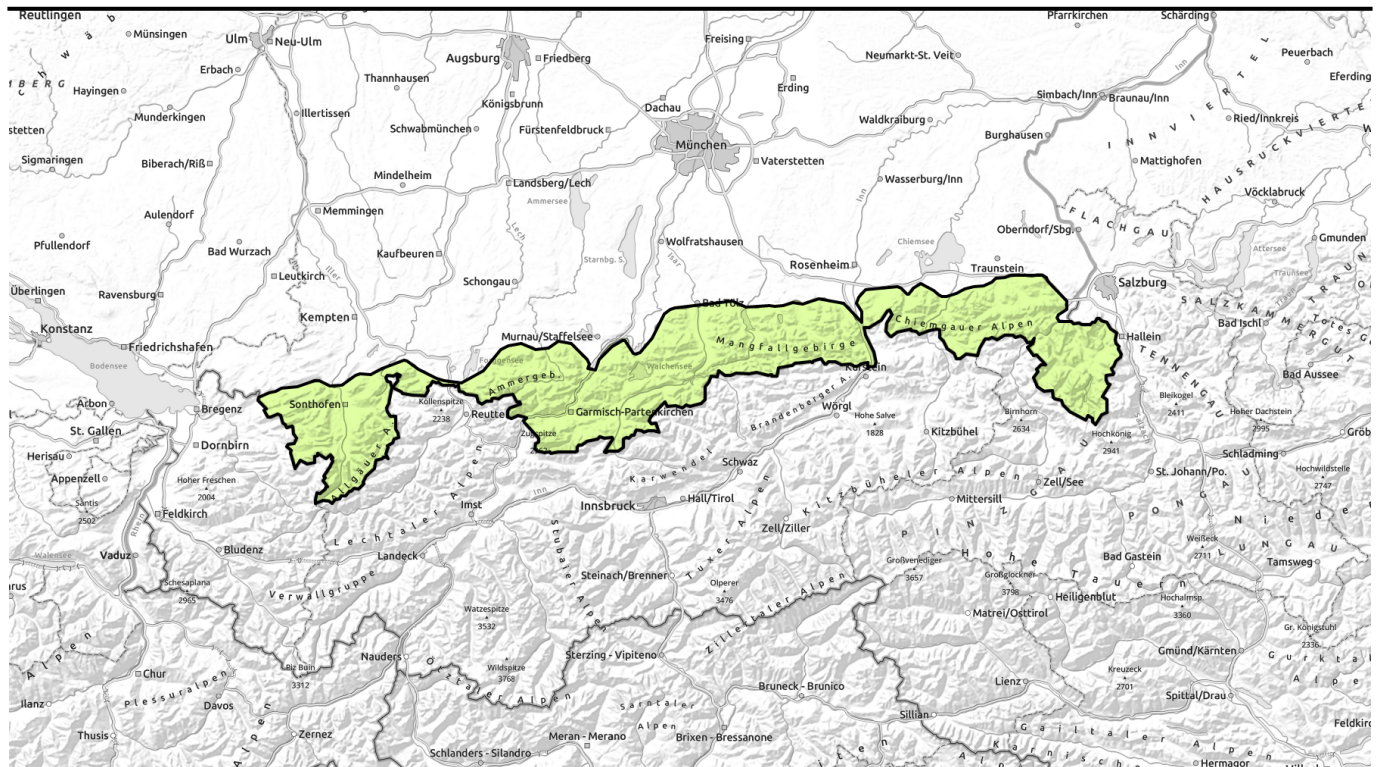


# Avalanche report for Friday, 24.02.2023



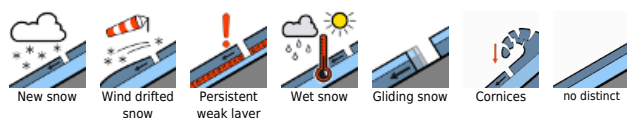
## Favourable avalanche situation. Little snow on the ground.



Allgäuer Vorberge, Allgäuer Hauptkamm, Ammergauer Alpen, Werdenfeller Alpen, Bayerische Voralpen West, Bayerische Voralpen Mitte, Bayerische Voralpen Ost, Chiemgauer Alpen West, Chiemgauer Alpen Ost, Berchtesgadener Alpen



### Avalanche problems



### Danger ratings

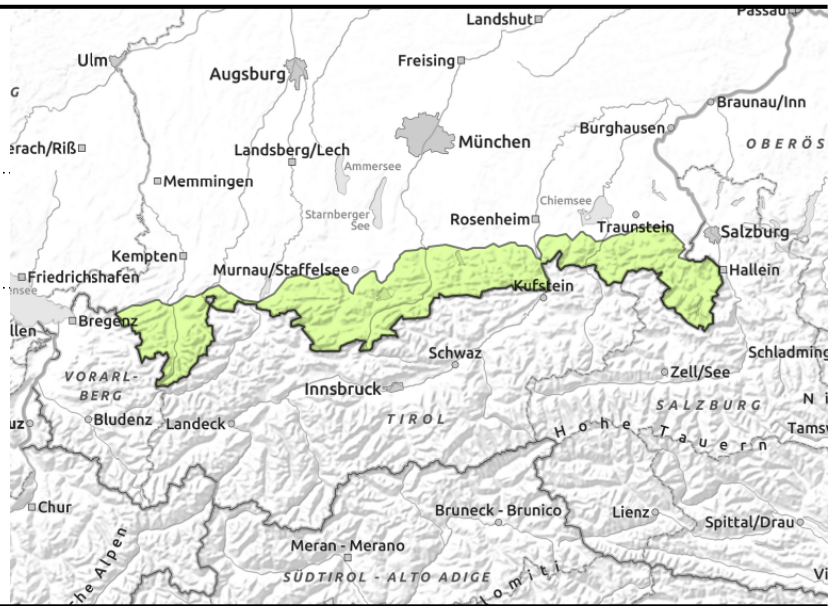
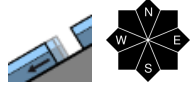


### Expositions



# Avalanche report for Friday, 24.02.2023

Allgäuer Vorberge, Allgäuer Hauptkamm, Ammergauer Alpen, Werdenfelser Alpen, Bayerische Voralpen West, Bayerische Voralpen Mitte, Bayerische Voralpen Ost, Chiemgauer Alpen West, Chiemgauer Alpen Ost, Berchtesgadener Alpen



## Backcountry tours hardly possible at intermediate altitudes

Avalanche danger is generally low. Isolated wet snow problems exist, especially on extremely steep slopes where there is still sufficient snow: a small wet-snow avalanche could trigger naturally. On steep grassy slopes and in sparsely wooded zones, small slides over smooth ground are possible. Glide cracks are indicators of danger.

### Snowpack structure

Overall the snowpack is well settled and compact. At intermediate altitudes the small amounts of snow are thoroughly wet down to the ground. At high altitudes the snow is moist on sunny slopes. Melt-freeze crusts and wind crusts dominate the surface. Tests show no easily triggered snowpack layers. Intermediate slopes are becoming bare of snow.

### Outlook

Avalanche danger could rise on Friday night due to precipitation (down to low lying areas) and increasing winds.

Translated by Jeffrey McCabe, [www.creativtrans.com](http://www.creativtrans.com)

#### Avalanche problems



#### Danger ratings



#### Expositions

