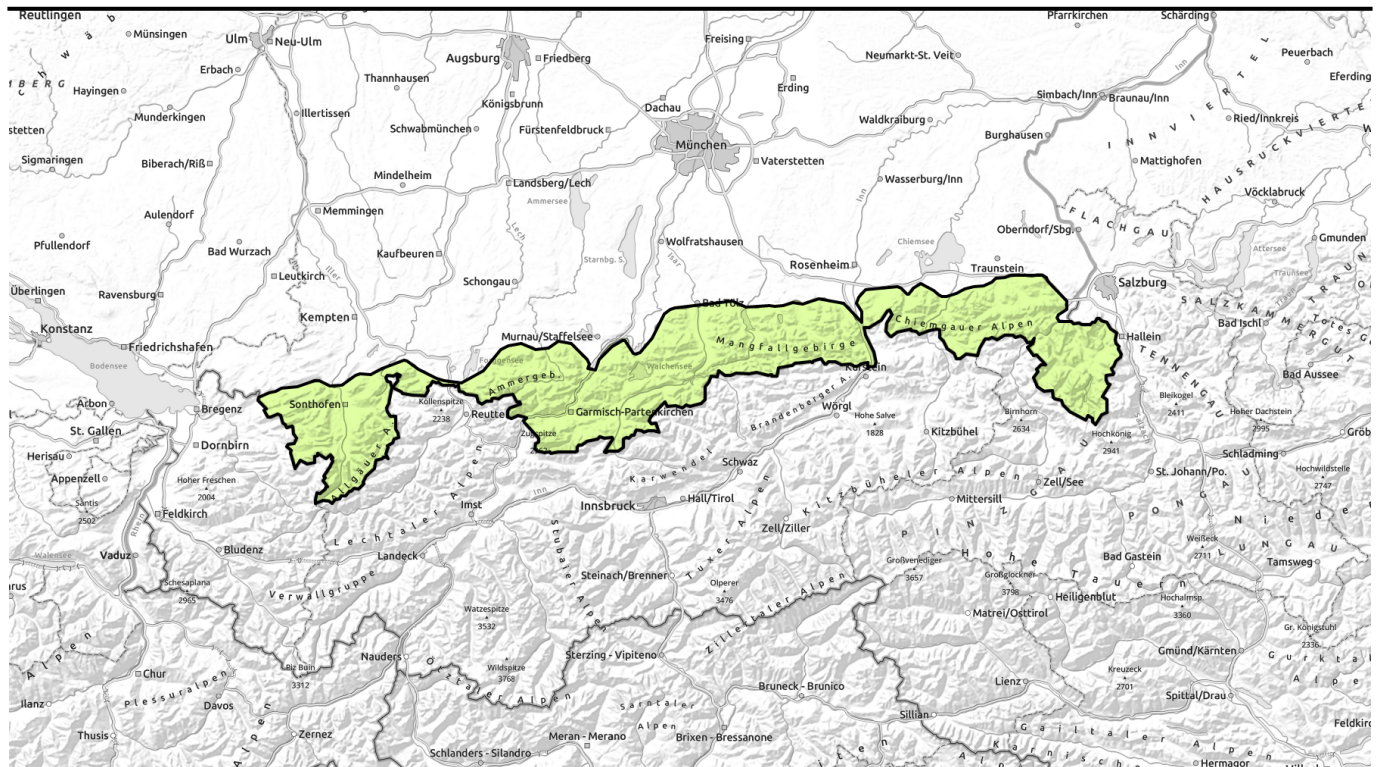


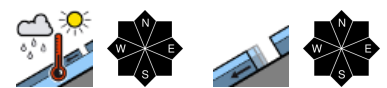
Avalanche report for Thursday, 23.02.2023



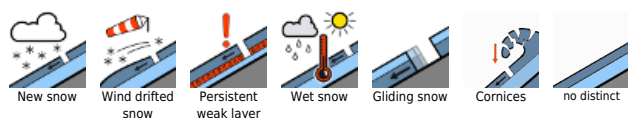
Favourable avalanche situation. Little snow on the ground.



Allgäuer Vorberge, Allgäuer Hauptkamm, Ammergauer Alpen, Werdenfeller Alpen, Bayerische Voralpen West, Bayerische Voralpen Mitte, Bayerische Voralpen Ost, Chiemgauer Alpen Ost, Berchtesgadener Alpen, Chiemgauer Alpen West



Avalanche problems



Danger ratings

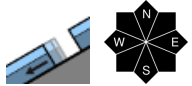
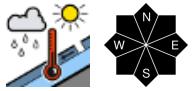
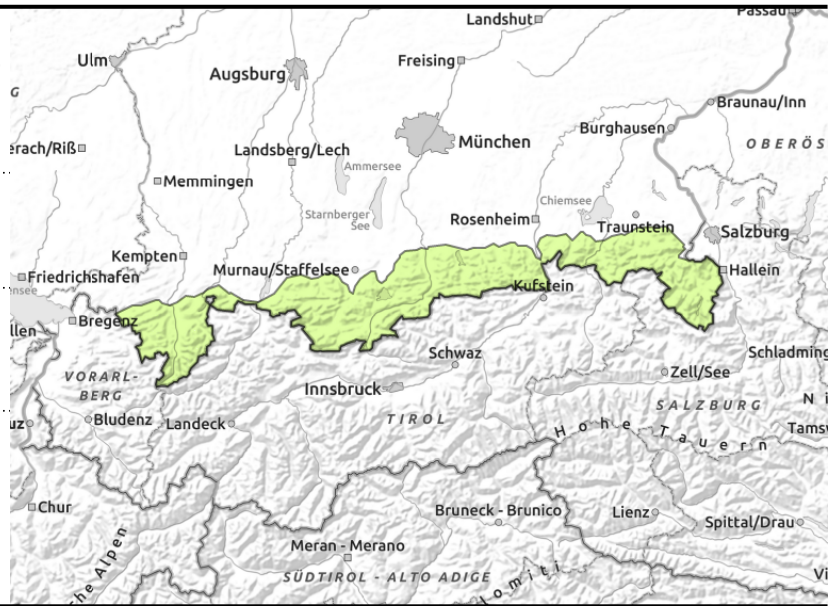


Expositions



Avalanche report for Thursday, 23.02.2023

Allgäuer Vorberge, Allgäuer Hauptkamm,
Ammergauer Alpen, Werdenfelser Alpen, Bayerische
Voralpen West, Bayerische Voralpen Mitte,
Bayerische Voralpen Ost, Chiemgauer Alpen Ost,
Berchtesgadener Alpen, Chiemgauer Alpen West



Backcountry tours hardly possible at intermediate altitudes

Avalanche danger is generally low. Isolated wet snow problems exist, especially on extremely steep slopes where there is still sufficient snow: a small wet-snow avalanche could trigger naturally. On steep grassy slopes and in sparsely wooded zones, small slides over smooth ground are possible. Glide cracks are indicators of danger.

Snowpack structure

Overall the snowpack is well settled and compact. At intermediate altitudes the small amounts of snow are thoroughly wet down to the ground. At high altitudes the snow is moist on sunny slopes. Melt-freeze crusts and wind crusts dominate the surface. Tests show no easily triggered snowpack layers. Intermediate slopes are becoming bare of snow.

Outlook

Avalanche danger could rise towards the weekend due to precipitation and increasing winds.

Translated by Jeffrey McCabe, www.creativtrans.com

Avalanche problems



Danger ratings



Expositions

