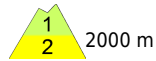
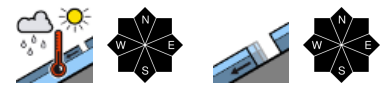


Increase in danger of glide-snow and wet-snow avalanches due to sunshine and higher daytime temperatures



Allgäuer Vorberge, Ammergauer Alpen, Bayerische Voralpen West, Bayerische Voralpen Mitte, Bayerische Voralpen Ost, Chiemgauer Alpen West, Chiemgauer Alpen Ost



Allgäuer Hauptkamm, Werdenfeller Alpen, Berchtesgadener Alpen



Avalanche problems

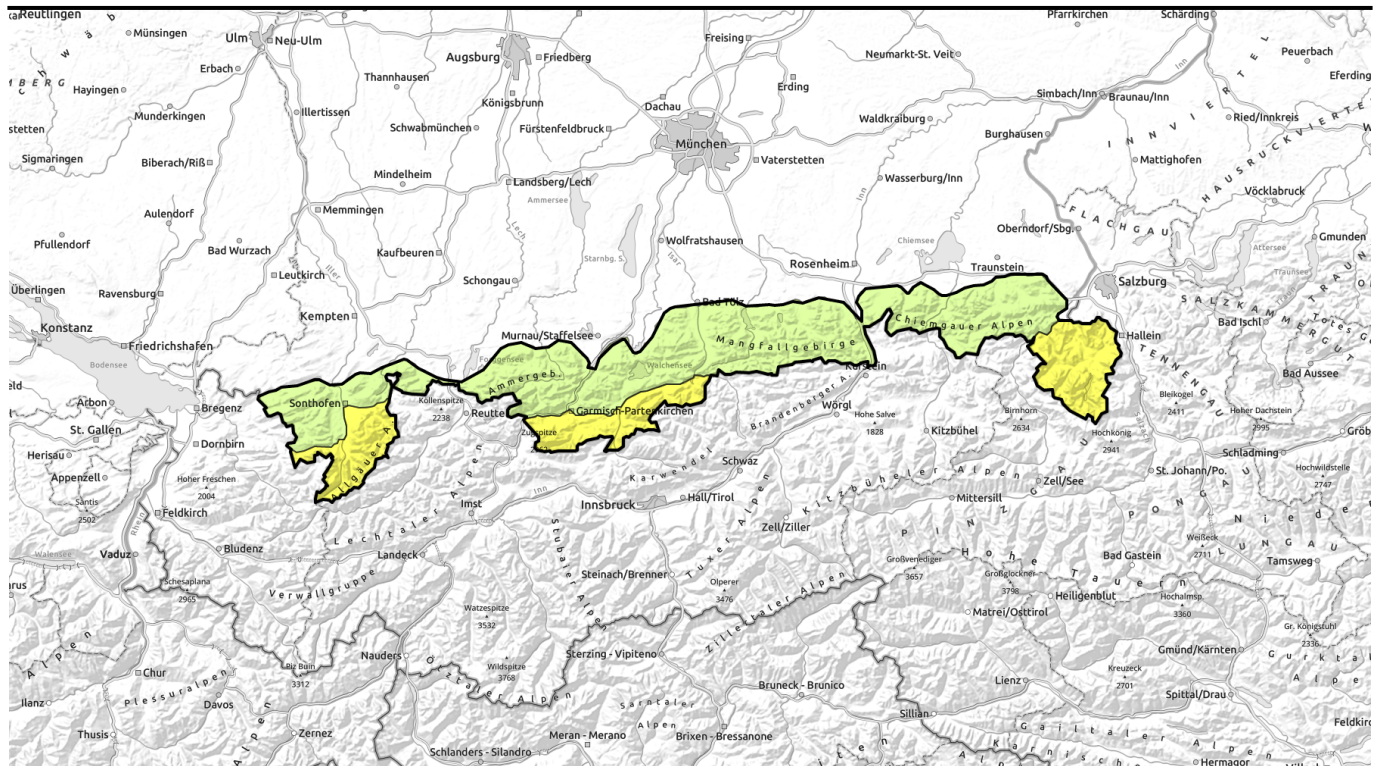


Danger ratings



Expositions





Anstieg der Gefahr von Gleit- und Nassschneelawinen mit Sonne und Erwärmung.



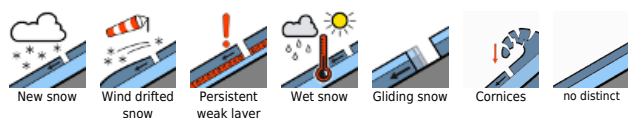
Allgäuer Vorberge, Ammergauer Alpen, Bayerische Voralpen West, Bayerische Voralpen Mitte, Bayerische Voralpen Ost, Chiemgauer Alpen West, Chiemgauer Alpen Ost



Allgäuer Hauptkamm, Werdenfeller Alpen, Berchtesgadener Alpen



Avalanche problems



Danger ratings

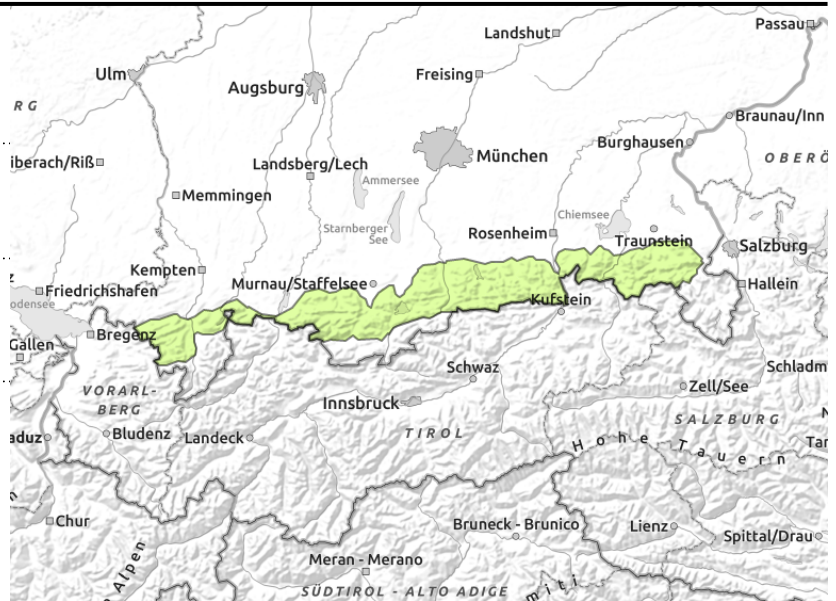
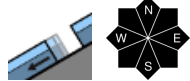
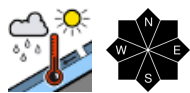


Expositions



Avalanche report for Monday, 20.02.2023

Allgäuer Vorberge, Ammergauer Alpen, Bayerische Voralpen West, Bayerische Voralpen Mitte, Bayerische Voralpen Ost, Chiemgauer Alpen West, Chiemgauer Alpen Ost



Backcountry skiing tours are hardly still possible, the small amounts of snow are thoroughly wet.

Avalanche danger is low. Main problem: wet snow. During the daytime, mostly small wet-snow avalanches can trigger naturally. On steep grass-covered slopes which have not yet discharged and in sparsely wooded zones, small to (in isolated cases) medium-sized glide snow avalanches can glide over the smooth ground. Glide cracks are signals of imminent danger.

Snowpack structure

The shallow snowpack is well settled, and now thoroughly wet down to the ground due to rain and higher temperatures. With solar radiation on Monday it will forfeit more of its firmness. Due to the shallowness of the snowpack, most releases are small. Sunny slopes are becoming bare of snow.

Outlook

No significant change in avalanche danger levels is expected.

Avalanche problems



Danger ratings

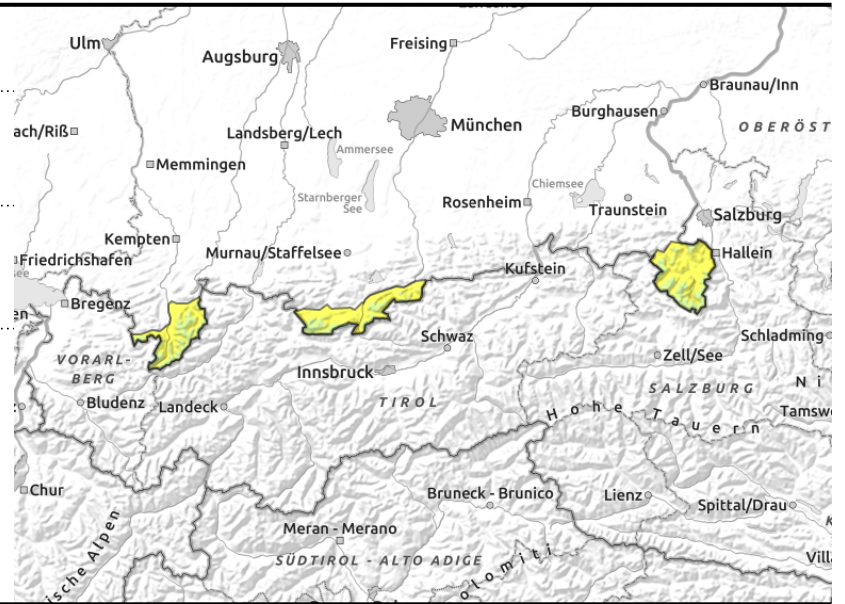
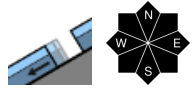
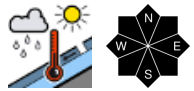


Expositions



Avalanche report for Monday, 20.02.2023, morning

Allgäuer Hauptkamm, Werdenfeller Alpen, Berchtesgadener Alpen



Sink-in depths are a signal of threatening wet-snow avalanches

Avalanche danger in the morning is moderate below 2000m, low above that altitude. In the afternoon, the danger rises to moderate also above 2000 m. Main problem: wet snow. During the daytime, mostly small wet-snow avalanches can trigger naturally. On steep grass-covered slopes which have not yet discharged and in sparsely wooded zones, small to (in isolated cases) medium-sized glide snow avalanches can glide over the smooth ground. Glide cracks are signals of imminent danger. In addition, particularly in the eastern Bavarian mountain regions, there are shallow snowdrift accumulations at high altitudes near ridgelines on N/E facing steep slopes where a small slab can trigger. Caution urged towards the risks of taking a fall.

Snowpack structure

The shallow snowpack is well settled, and now thoroughly wet down to the ground due to rain and higher temperatures. With solar radiation on Monday it will forfeit more of its firmness. Due to the shallowness of the snowpack, most releases are small. Particularly in the eastern Bavarian mountain regions, there are shallow snowdrift accumulations at high altitudes near ridgelines on N/E facing steep slopes where a small slab can trigger; they are generally well bonded with the snow cover.

Outlook

No significant change in avalanche danger levels is expected.

Avalanche problems



Danger ratings

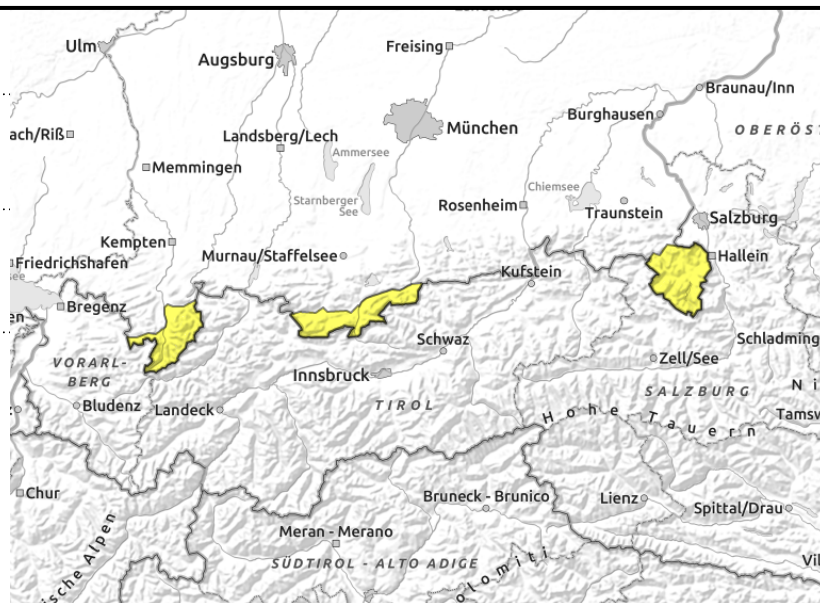
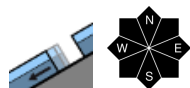
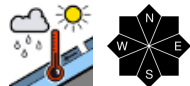


Expositions



Avalanche report for Monday, 20.02.2023, afternoon

Allgäuer Hauptkamm, Werdenfeller Alpen, Berchtesgadener Alpen



Sink-in depths are a signal of threatening wet-snow avalanches

Avalanche danger in the morning is moderate below 2000m, low above that altitude. In the afternoon, the danger rises to moderate also above 2000 m. Main problem: wet snow. During the daytime, mostly small wet-snow avalanches can trigger naturally. On steep grass-covered slopes which have not yet discharged and in sparsely wooded zones, small to (in isolated cases) medium-sized glide snow avalanches can glide over the smooth ground. Glide cracks are signals of imminent danger. In addition, particularly in the eastern Bavarian mountain regions, there are shallow snowdrift accumulations at high altitudes near ridgelines on N/E facing steep slopes where a small slab can trigger. Caution urged towards the risks of taking a fall.

Snowpack structure

The shallow snowpack is well settled, and now thoroughly wet down to the ground due to rain and higher temperatures. With solar radiation on Monday it will forfeit more of its firmness. Due to the shallowness of the snowpack, most releases are small. Particularly in the eastern Bavarian mountain regions, there are shallow snowdrift accumulations at high altitudes near ridgelines on N/E facing steep slopes where a small slab can trigger; they are generally well bonded with the snow cover.

Outlook

No significant change in avalanche danger levels is expected.

Translated by Jeffrey McCabe, www.creativtrans.com

Avalanche problems



Danger ratings



Expositions

