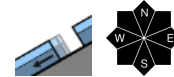


Increasing danger of wet snow avalanches over the course of the day!



Allgäuer Hauptkamm, Werdenfelser Alpen, Berchtesgadener Alpen



Allgäuer Vorberge, Ammergauer Alpen, Bayerische Voralpen West, Bayerische Voralpen Mitte, Bayerische Voralpen Ost, Chiemgauer Alpen West, Chiemgauer Alpen Ost



Avalanche problems

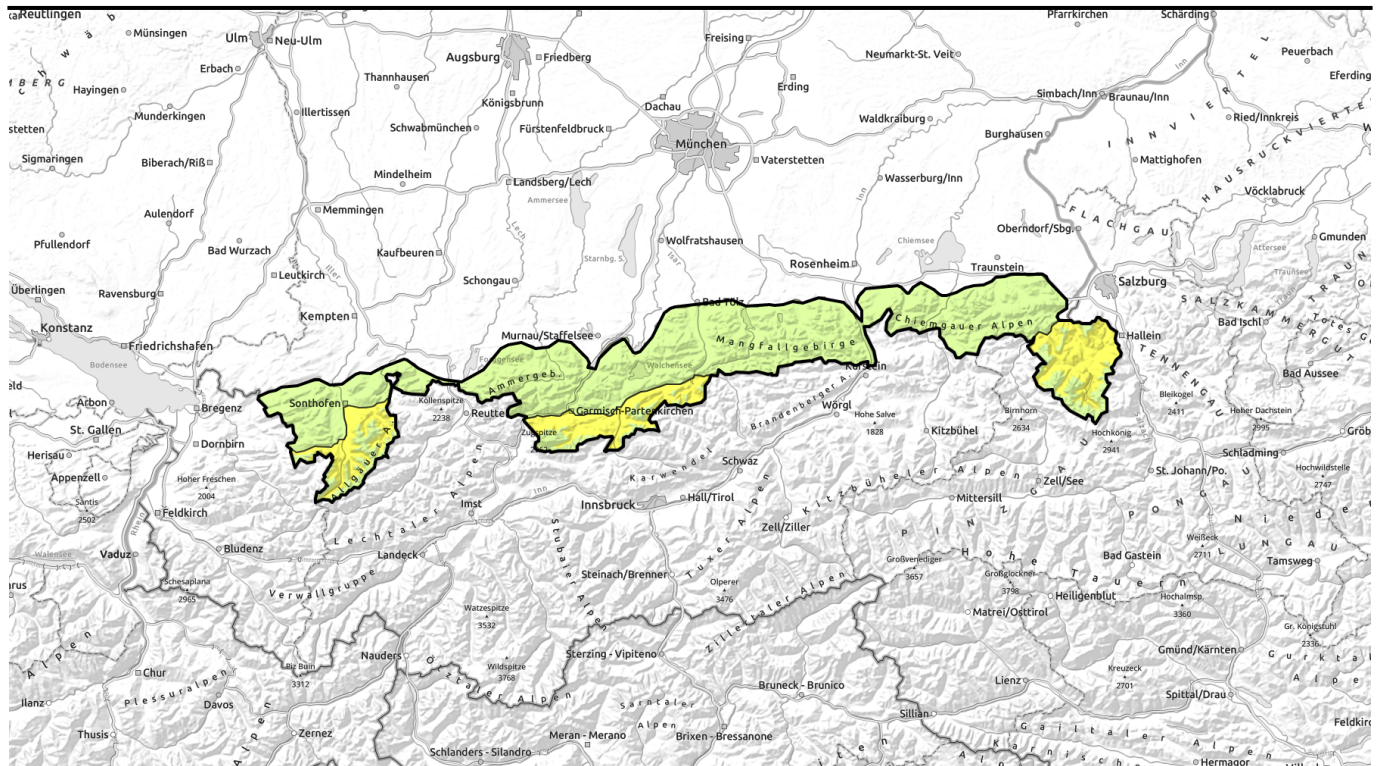


Danger ratings



Expositions



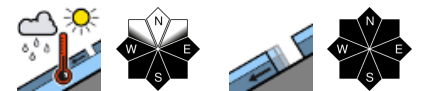


Im Tagesverlauf zunehmende Gefahr von Nassschneelawinen.

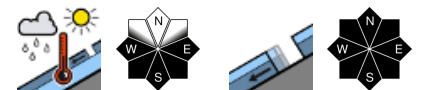


Allgäuer Hauptkamm, Werdenfeller Alpen, Berchtesgadener Alpen

2400 m



Allgäuer Vorberge, Ammergauer Alpen, Bayerische Voralpen West, Bayerische Voralpen Mitte, Bayerische Voralpen Ost, Chiemgauer Alpen West, Chiemgauer Alpen Ost



Avalanche problems



Danger ratings

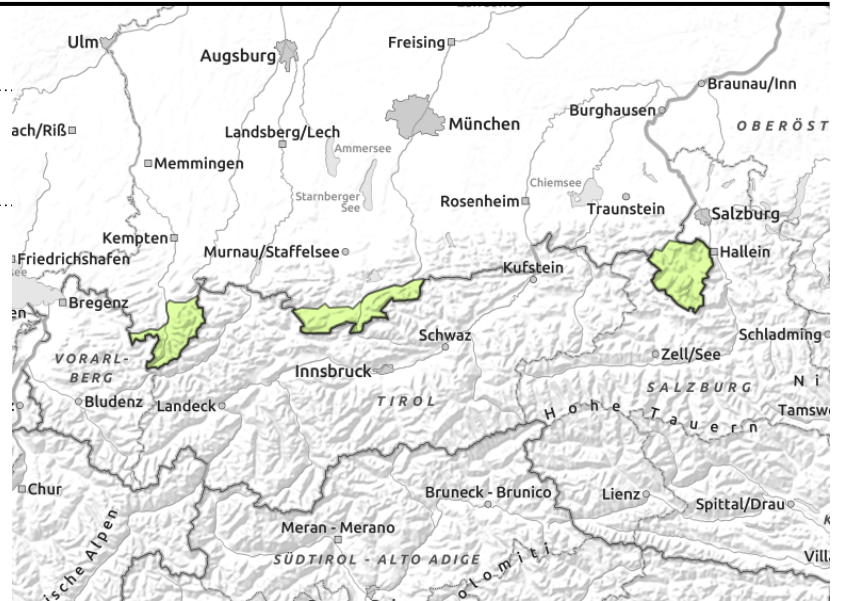
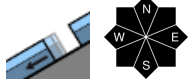


Expositions



Avalanche report for Saturday, 18.02.2023, morning

Allgäuer Hauptkamm, Werdenfeller Alpen, Berchtesgadener Alpen



Beware of wet snow avalanches at lower altitudes and shallow snowdrifts at higher altitudes

Below 2400 m the avalanche danger rises from low to moderate during the course of the day; for the rest it is low. Main problem: wet snow. During the course of the day, small wet snow avalanches can trigger naturally. Up to medium-sized glide snow avalanches can release on steep smooth grass-covered slopes and in sparsely wooded zones, primarily in the afternoon. Glide cracks indicate danger.

In addition, partly fresh, small snowdrift accumulations can be triggered as slab avalanches in N/E aspects in steep ridgeline terrain at high altitude. The danger of taking a fall in steep terrain outweighs that of being buried in snow masses.

Snowpack structure

The old snowpack has generally settled well and consolidated. Only on shady high altitude slopes are there still patches of compact powder. Due to solar radiation and daytime warming the snowpack is becoming increasingly moist which is associated with a loss of firmness. On sunny slopes the ground is becoming more and more bare up to intermediate altitudes. At high altitude strong westerly winds are generating snowdrift accumulations which are partly prone to triggering.

Outlook

On Sunday the avalanche danger can rise slightly due to rain at lower altitudes and new snow and wind at higher altitudes.

Avalanche problems



Danger ratings

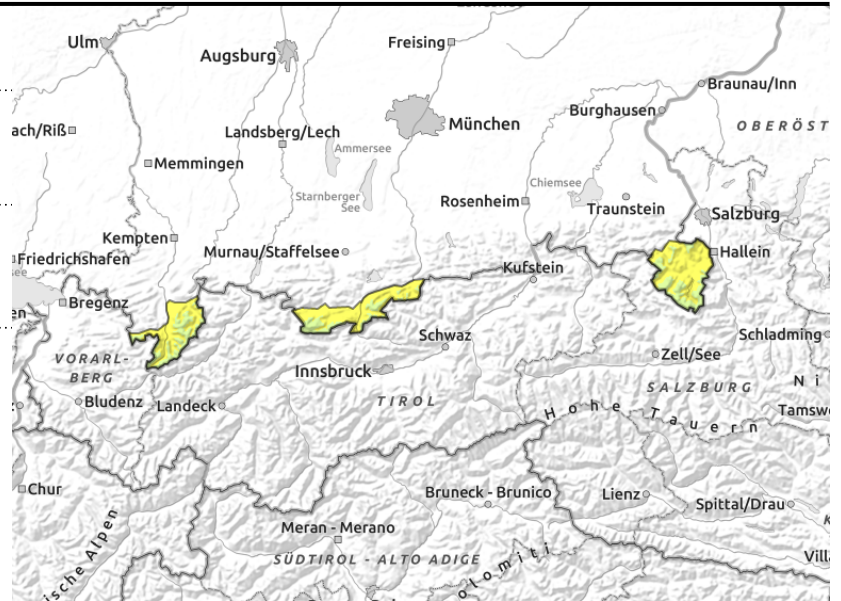
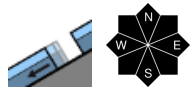
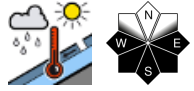


Expositions



Avalanche report for Saturday, 18.02.2023, afternoon

Allgäuer Hauptkamm, Werdenfeller Alpen, Berchtesgadener Alpen



Beware of wet snow avalanches at lower altitudes and shallow snowdrifts at higher altitudes

Below 2400 m the avalanche danger rises from low to moderate during the course of the day; for the rest it is low. Main problem: wet snow. During the course of the day, small wet snow avalanches can trigger naturally. Up to medium-sized glide snow avalanches can release on steep smooth grass-covered slopes and in sparsely wooded zones, primarily in the afternoon. Glide cracks indicate danger.

In addition, partly fresh, small snowdrift accumulations can be triggered as slab avalanches in N/E aspects in steep ridgeline terrain at high altitude. The danger of taking a fall in steep terrain outweighs that of being buried in snow masses.

Snowpack structure

The old snowpack has generally settled well and consolidated. Only on shady high altitude slopes are there still patches of compact powder. Due to solar radiation and daytime warming the snowpack is becoming increasingly moist which is associated with a loss of firmness. On sunny slopes the ground is becoming more and more bare up to intermediate altitudes. At high altitude strong westerly winds are generating snowdrift accumulations which are partly prone to triggering.

Outlook

On Sunday the avalanche danger can rise slightly due to rain at lower altitudes and new snow and wind at higher altitudes.

Avalanche problems



Danger ratings

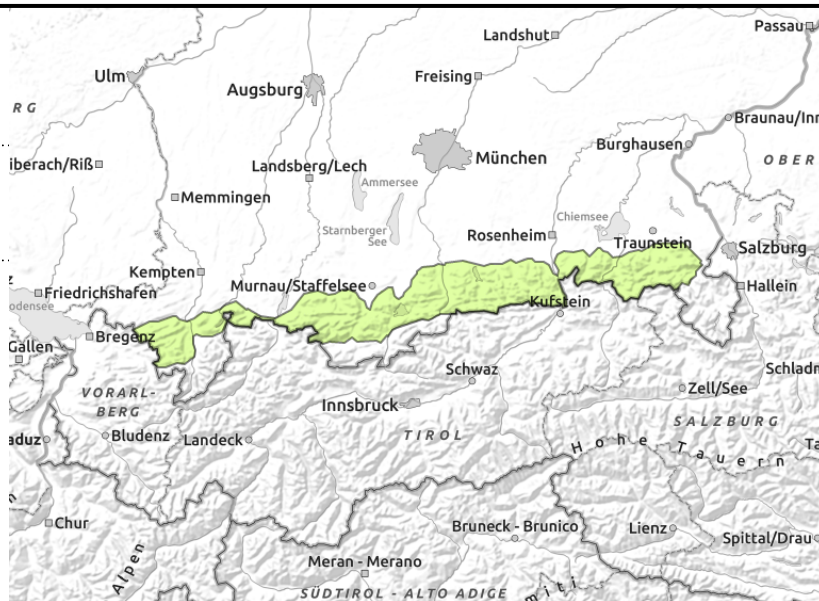
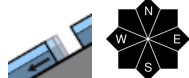


Expositions



Avalanche report for Saturday, 18.02.2023, morning

Allgäuer Vorberge, Ammergauer Alpen, Bayerische Voralpen West, Bayerische Voralpen Mitte, Bayerische Voralpen Ost, Chiemgauer Alpen West, Chiemgauer Alpen Ost



Only little but thoroughly wet snow at intermediate altitude in Bavarian Alps

Avalanche danger is low. Main problem: wet snow. During the course of the day, small wet snow avalanches can trigger naturally. Isolated small glide snow avalanches can trigger at ground level on steep smooth grass-covered slopes and in sparsely wooded zones. Glide cracks indicate danger.

Snowpack structure

The snowpack has settled well, by and large, and is stable. However, solar radiation and daytime warming promote a thorough moistening of the snowpack which as a consequence forfeits its firmness. On sunny slopes the ground is becoming increasingly bare up to intermediate altitudes.

Outlook

Slight increase of avalanche danger on Sunday due to rain at lower altitudes and some snowfall at higher altitudes.

Avalanche problems



Danger ratings

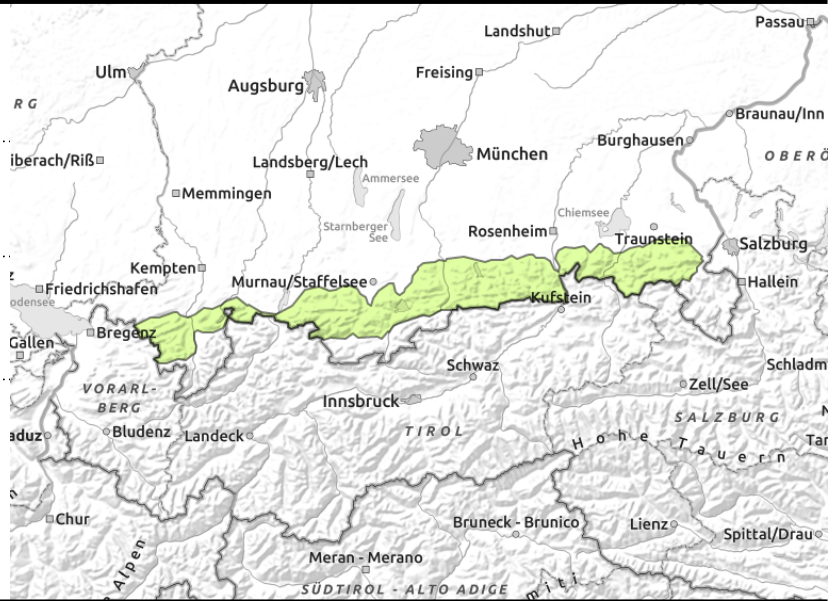
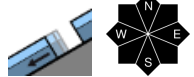
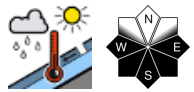


Expositions



Avalanche report for Saturday, 18.02.2023, afternoon

Allgäuer Vorberge, Ammergauer Alpen, Bayerische Voralpen West, Bayerische Voralpen Mitte, Bayerische Voralpen Ost, Chiemgauer Alpen West, Chiemgauer Alpen Ost



Only little but thoroughly wet snow at intermediate altitude in Bavarian Alps

Avalanche danger is low. Main problem: wet snow. During the course of the day, small wet snow avalanches can trigger naturally. Isolated small glide snow avalanches can trigger at ground level on steep smooth grass-covered slopes and in sparsely wooded zones. Glide cracks indicate danger.

Snowpack structure

The snowpack has settled well, by and large, and is stable. However, solar radiation and daytime warming promote a thorough moistening of the snowpack which as a consequence forfeits its firmness. On sunny slopes the ground is becoming increasingly bare up to intermediate altitudes.

Outlook

Slight increase of avalanche danger on Sunday due to rain at lower altitudes and some snowfall at higher altitudes.

Translated by Jeffrey McCabe, www.creativtrans.com

Avalanche problems



Danger ratings



Expositions

