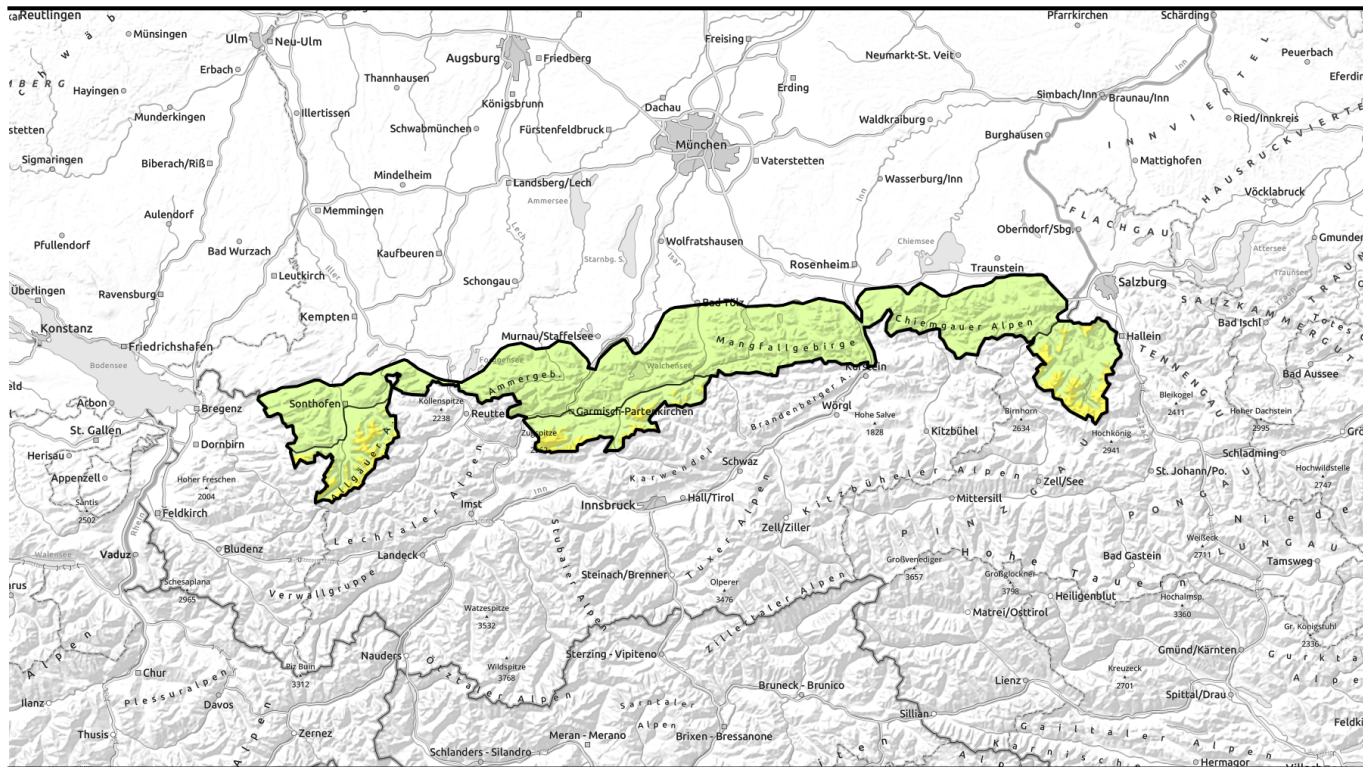


Avalanche report for Wednesday, 15.02.2023, morning



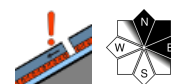
Increasing danger of wet snow avalanches over the course of the day!



Allgäuer Hauptkamm, Werdenfelser Alpen, Berchtesgadener Alpen



Allgäuer Vorberge, Ammergauer Alpen, Bayerische Voralpen West, Bayerische Voralpen Mitte, Bayerische Voralpen Ost, Chiemgauer Alpen West, Chiemgauer Alpen Ost



Avalanche problems



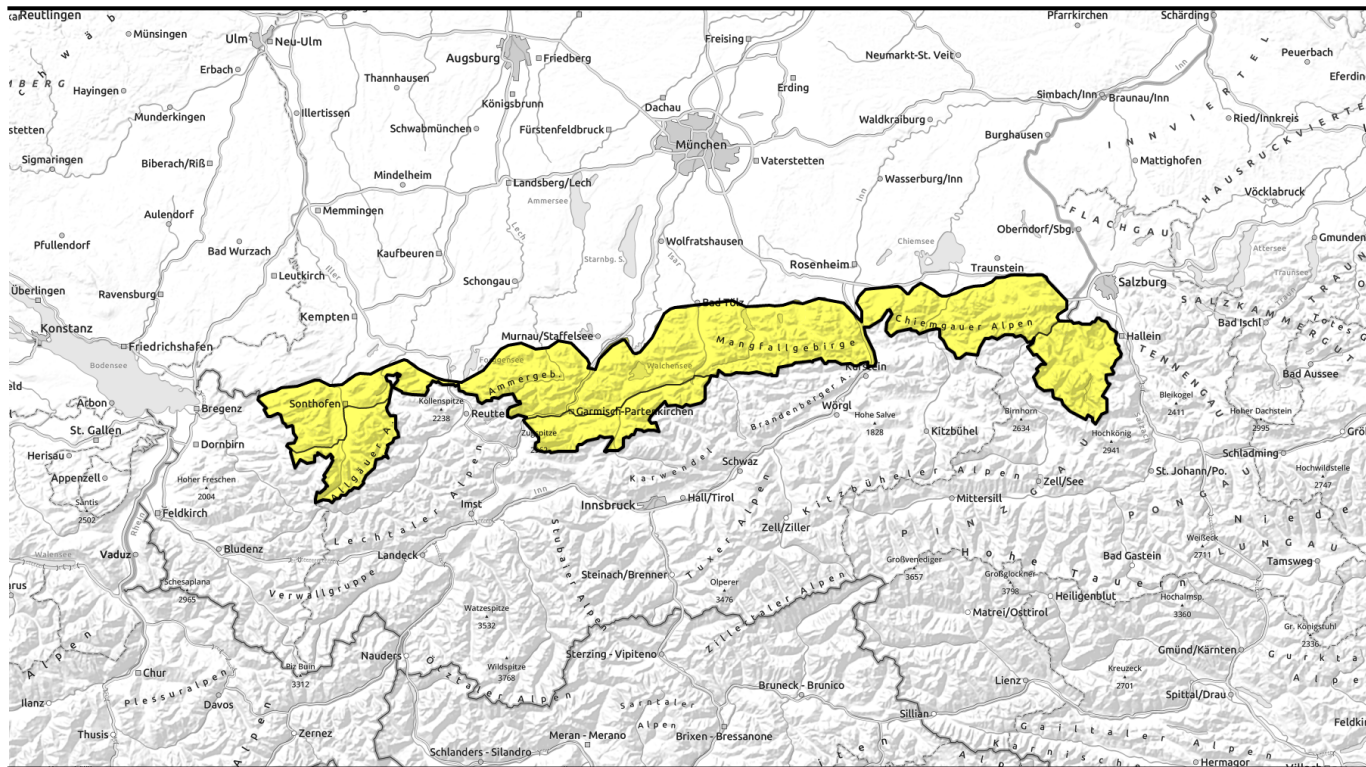
Danger ratings



Expositions



Avalanche report for Wednesday, 15.02.2023, afternoon



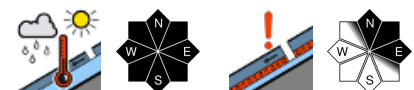
Im Tagesverlauf zunehmende Gefahr von Nassschneelawinen.



Allgäuer Hauptkamm, Werdenfeller Alpen, Berchtesgadener Alpen



Allgäuer Vorberge, Ammergauer Alpen, Bayerische Voralpen West, Bayerische Voralpen Mitte, Bayerische Voralpen Ost, Chiemgauer Alpen West, Chiemgauer Alpen Ost



Avalanche problems



Danger ratings

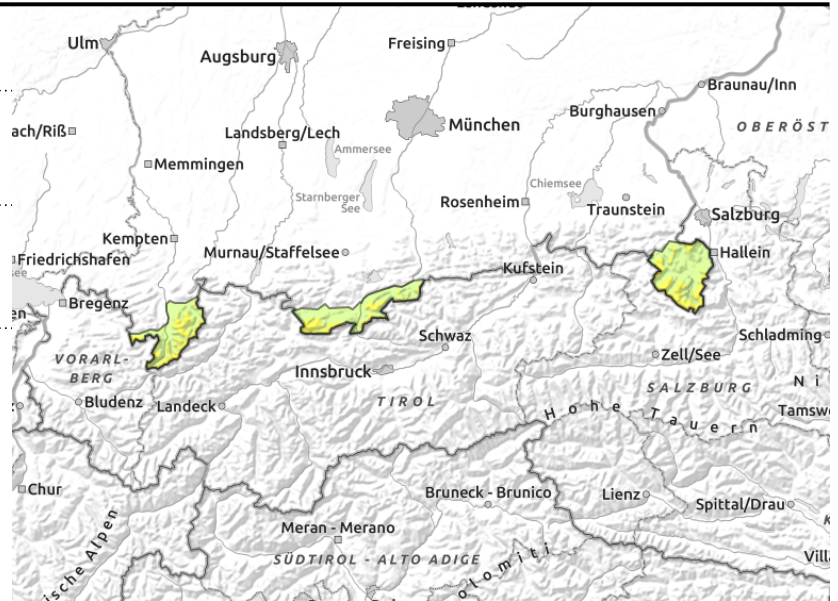
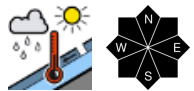
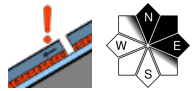


Expositions



Avalanche report for Wednesday, 15.02.2023, morning

Allgäuer Hauptkamm, Werdenfeller Alpen, Berchtesgadener Alpen



In some places at high altitude weak layers persist in the old snowpack!

Avalanche danger at high altitudes is moderate; at altitudes lower than that it is low but rises to moderate even below 2000 m in line with the daytime danger cycle. The main problem still stems from weak layers in the old snowpack. In a few places in steep N/E facing ridgeline terrain slabs can in particular be triggered by large additional loading, especially in zones with shallow snow such as at the entry points of steep gullies. Avalanches attain medium size.

Danger of naturally triggering medium-sized superficial wet-snow avalanches increasing during the course of the day due to solar radiation and daytime warming. Isolated medium-sized glide snow avalanches can be expected on smooth steep grass-covered slopes. Glide cracks indicate danger.

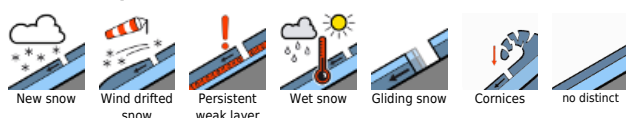
Snowpack structure

At intermediate altitudes the snowpack has generally settled well and solidified in the morning. In particular on sun-drenched slopes a melt-freeze crust forms during the night which softens again during the day. Due to solar radiation and daytime warming the uppermost snow layers near the surface are becoming thoroughly moist and thus forfeit their firmness. On sunny slopes the ground is becoming bare up to high intermediate altitudes. At higher altitudes, in some places intermediate weak layers consisting of expansively metamorphose (faceted) crystals have persisted at ground level but also in the upper half of the snowpack which are still prone to triggering.

Outlook

During Thursday night the weather will change with onset of precipitations and wind. Until then, the avalanche situation will not change significantly.

Avalanche problems



Danger ratings

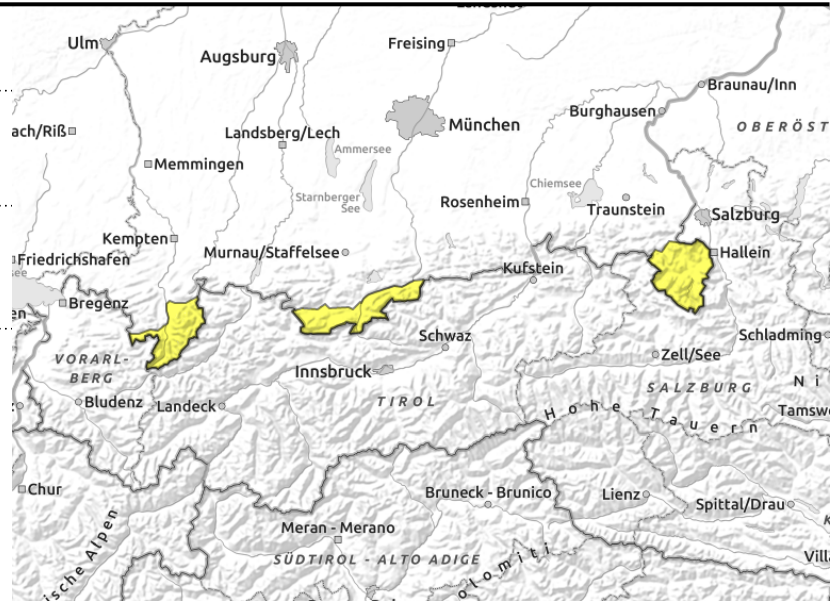
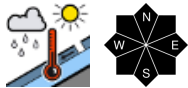
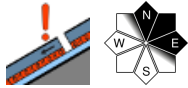


Expositions



Avalanche report for Wednesday, 15.02.2023, afternoon

Allgäuer Hauptkamm, Werdenfeller Alpen, Berchtesgadener Alpen



In some places at high altitude weak layers persist in the old snowpack!

Avalanche danger at high altitudes is moderate; at altitudes lower than that it is low but rises to moderate even below 2000 m in line with the daytime danger cycle. The main problem still stems from weak layers in the old snowpack. In a few places in steep N/E facing ridgeline terrain slabs can in particular be triggered by large additional loading, especially in zones with shallow snow such as at the entry points of steep gullies. Avalanches attain medium size.

Danger of naturally triggering medium-sized superficial wet-snow avalanches increasing during the course of the day due to solar radiation and daytime warming. Isolated medium-sized glide snow avalanches can be expected on smooth steep grass-covered slopes. Glide cracks indicate danger.

Snowpack structure

At intermediate altitudes the snowpack has generally settled well and solidified in the morning. In particular on sun-drenched slopes a melt-freeze crust forms during the night which softens again during the day. Due to solar radiation and daytime warming the uppermost snow layers near the surface are becoming thoroughly moist and thus forfeit their firmness. On sunny slopes the ground is becoming bare up to high intermediate altitudes. At higher altitudes, in some places intermediate weak layers consisting of expansively metamorphose (faceted) crystals have persisted at ground level but also in the upper half of the snowpack which are still prone to triggering.

Outlook

During Thursday night the weather will change with onset of precipitations and wind. Until then, the avalanche situation will not change significantly.

Avalanche problems



Danger ratings

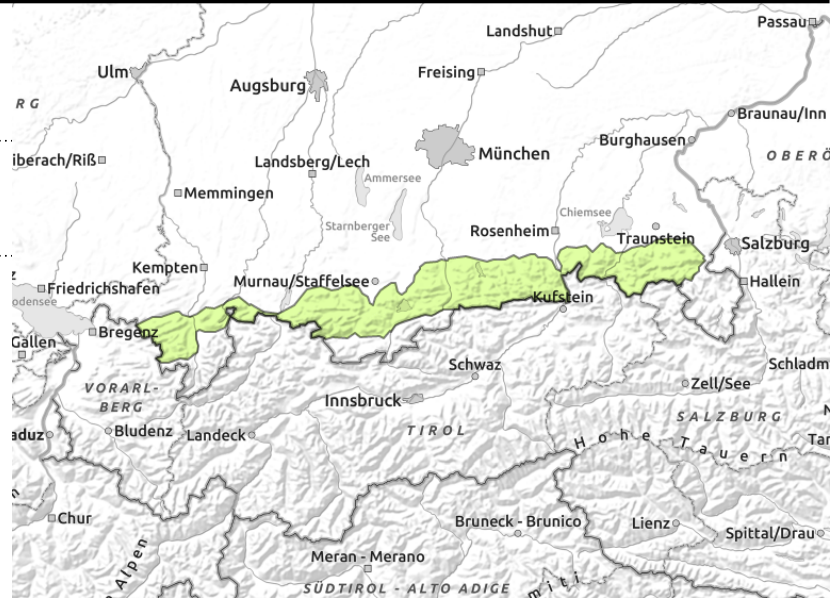
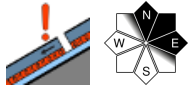


Expositions



Avalanche report for Wednesday, 15.02.2023, morning

Allgäuer Vorberge, Ammergauer Alpen, Bayerische Voralpen West, Bayerische Voralpen Mitte, Bayerische Voralpen Ost, Chiemgauer Alpen West, Chiemgauer Alpen Ost



Not much snow at intermediate altitudes in the Bavarian Alps.

In the morning avalanche danger is low, but later rises to moderate in line with the daytime danger cycle. Main problem: wet snow. Naturally releasing, predominantly small, superficial wet snow avalanches can be expected in steep terrain due to solar radiation and rise in temperature during the course of the day. Isolated small glide snow avalanches can trigger at ground level on steep smooth grass-covered slopes. Glide cracks indicate danger.

In addition, isolated weak intermediate layers are found in the old snowpack in extremely steep north to east-facing terrain. There, avalanches can still be triggered by large additional loading and can grow to medium size.

Snowpack structure

At intermediate altitude the snowpack is mostly encrusted in the morning, has settled well and is stable. As a consequence of solar radiation and mild temperatures the snowpack surface moistens thoroughly during the course of the day and as a result the snowpack forfeits its firmness. In a few spots in extremely steep shady terrain weak intermediate layers have persisted in the old snowpack that consist of expansively metamorphosed (faceted) crystals and are prone to triggering. On sunny slopes the ground has become bare again up to high altitudes in many places.

Outlook

During Thursday night the weather will change with onset of precipitations and wind. Until then, the avalanche situation will not change significantly.

Avalanche problems



Danger ratings

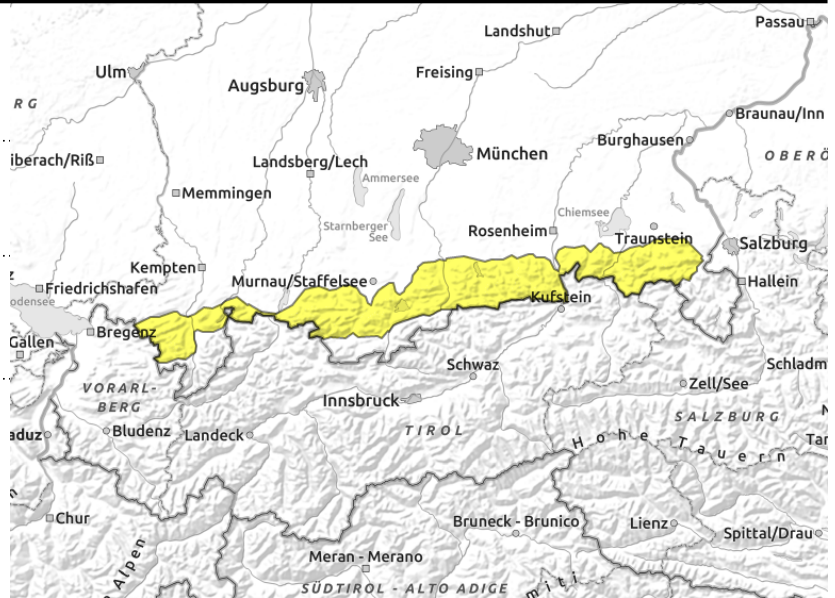
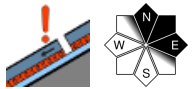
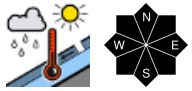


Expositions



Avalanche report for Wednesday, 15.02.2023, afternoon

Allgäuer Vorberge, Ammergauer Alpen, Bayerische Voralpen West, Bayerische Voralpen Mitte, Bayerische Voralpen Ost, Chiemgauer Alpen West, Chiemgauer Alpen Ost



Not much snow at intermediate altitudes in the Bavarian Alps.

In the morning avalanche danger is low, but later rises to moderate in line with the daytime danger cycle. Main problem: wet snow. Naturally releasing, predominantly small, superficial wet snow avalanches can be expected in steep terrain due to solar radiation and rise in temperature during the course of the day. Isolated small glide snow avalanches can trigger at ground level on steep smooth grass-covered slopes. Glide cracks indicate danger.

In addition, isolated weak intermediate layers are found in the old snowpack in extremely steep north to east-facing terrain. There, avalanches can still be triggered by large additional loading and can grow to medium size.

Snowpack structure

At intermediate altitude the snowpack is mostly encrusted in the morning, has settled well and is stable. As a consequence of solar radiation and mild temperatures the snowpack surface moistens thoroughly during the course of the day and as a result the snowpack forfeits its firmness. In a few spots in extremely steep shady terrain weak intermediate layers have persisted in the old snowpack that consist of expansively metamorphosed (faceted) crystals and are prone to triggering. On sunny slopes the ground has become bare again up to high altitudes in many places.

Outlook

During Thursday night the weather will change with onset of precipitations and wind. Until then, the avalanche situation will not change significantly.

Translated by Jeffrey McCabe, www.creativtrans.com

Avalanche problems



Danger ratings



Expositions

