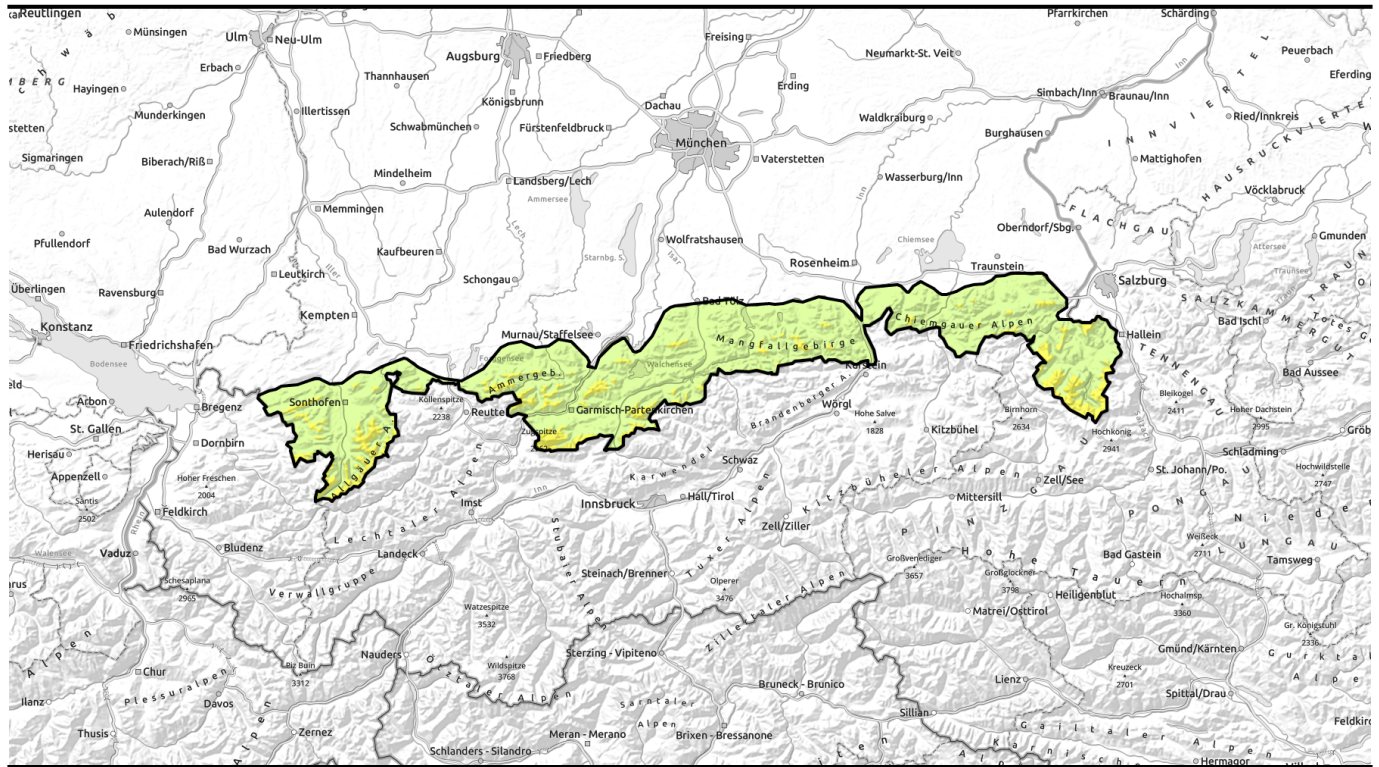


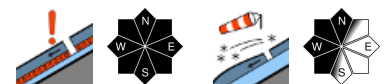
Avalanche report for Thursday, 09.02.2023



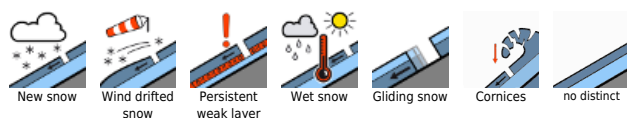
Due to low temperatures, persistent weak layer problem is receding



Allgäuer Vorberge, Bayerische Voralpen West, Bayerische Voralpen Mitte, Bayerische Voralpen Ost, Chiemgauer Alpen West, Chiemgauer Alpen Ost, Ammergau Alpen, Berchtesgadener Alpen, Allgäu Hauptkamm, Werdenfelser Alpen



Avalanche problems



Danger ratings

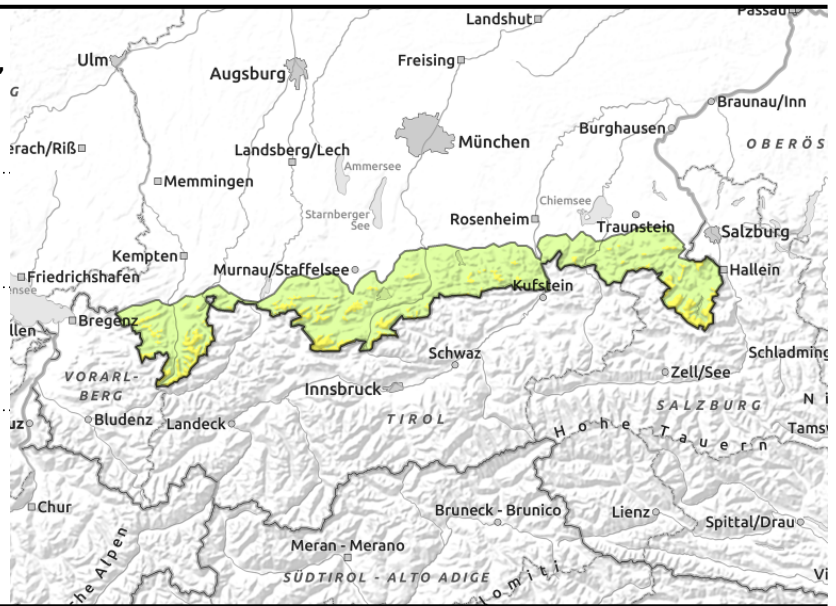
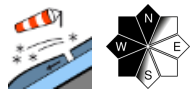
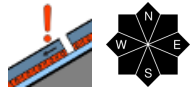


Expositions



Avalanche report for Thursday, 09.02.2023

Allgäuer Vorberge, Bayerische Voralpen West, Bayerische Voralpen Mitte, Bayerische Voralpen Ost, Chiemgauer Alpen West, Chiemgauer Alpen Ost, Ammergauer Alpen, Berchtesgadener Alpen, Allgäuer Hauptkamm, Werdenfelser Alpen



Caution in transitions from shallow to deep snow at entries into gullies and bowls and behind abrupt discontinuities in the terrain

Avalanche danger above 1600 m is moderate, below that altitude danger is low. Main problem: in the old snowpack layers. Slab avalanches can trigger in transitions from shallow to deep snow, e.g. at entries into steep gullies and bowls or behind abrupt discontinuities in the terrain by the weight of one sole skier. Elsewhere, older snowdrifts can be triggered mostly by large additional loading. Frequency and spread of danger zones increase with ascending altitude. Avalanche can become large-sized at high altitudes.

In addition, due to easterly winds fresh snowdrift accumulations can be generated which are easily triggered as slab avalanches. Elsewhere, isolated small glide-snow avalanches are possible on steep grass-covered slopes.

Snowpack structure

As easterly winds intensify on Wednesday, small fresh snowdrift accumulations can be generated in ridgeline terrain, often deposited atop surface hoar - they are prone to triggering. Elsewhere a few cm of fresh snow blankets older snowdrifts which have already settled and bonded. At high altitudes there are thin melt-freeze crusts near the older drifts in the snowpack, also weak faceted layers have persisted. Particularly in zones where the snow is shallow, these layers can still be triggered.

Outlook

Avalanche danger is expected to diminish over the next few days.

Translated by Jeffrey McCabe, www.creativtrans.com

Avalanche problems



Danger ratings



Expositions

