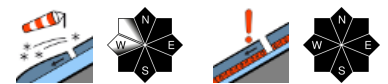


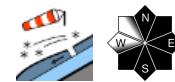
## Fresh snowdrifts and in places trigger-sensitive layers in old snowpack



Allgäuer Hauptkamm, Werdenfelser Alpen, Berchtesgadener Alpen



Allgäuer Vorberge, Ammergauer Alpen, Bayerische Voralpen West, Bayerische Voralpen Mitte, Bayerische Voralpen Ost, Chiemgauer Alpen West, Chiemgauer Alpen Ost



### Avalanche problems

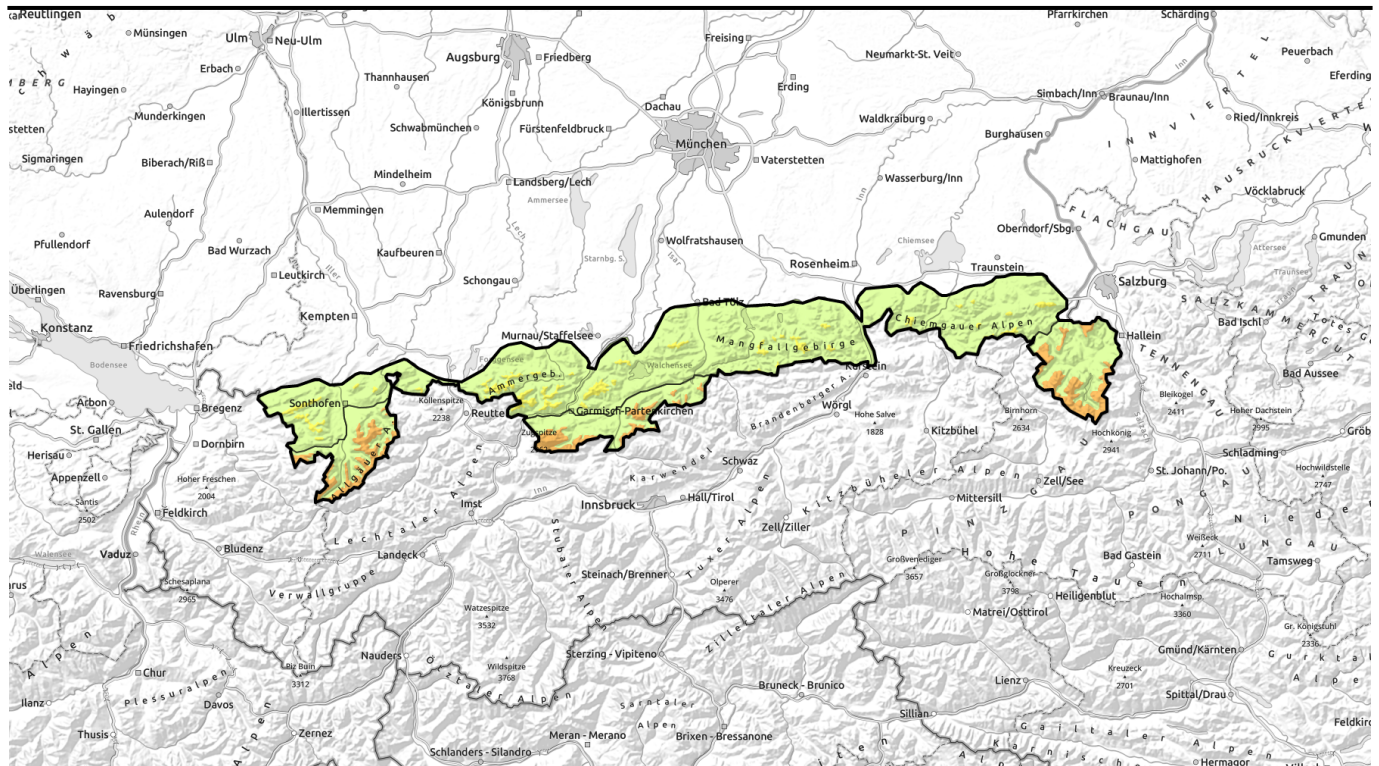


### Danger ratings



### Expositions

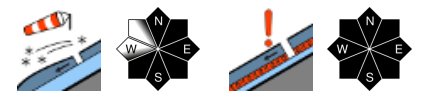




## Frischer Tribschnee und stellenweise störanfällige Schichten im Altschnee.



Allgäuer Hauptkamm, Werdenfeller Alpen, Berchtesgadener Alpen



forestline

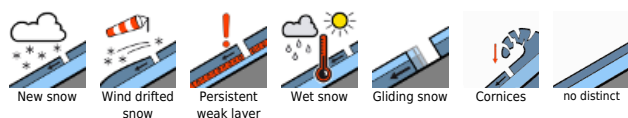


Allgäuer Vorberge, Ammergauer Alpen, Bayerische Voralpen West, Bayerische Voralpen Mitte, Bayerische Voralpen Ost, Chiemgauer Alpen West, Chiemgauer Alpen Ost



forestline

### Avalanche problems



### Danger ratings

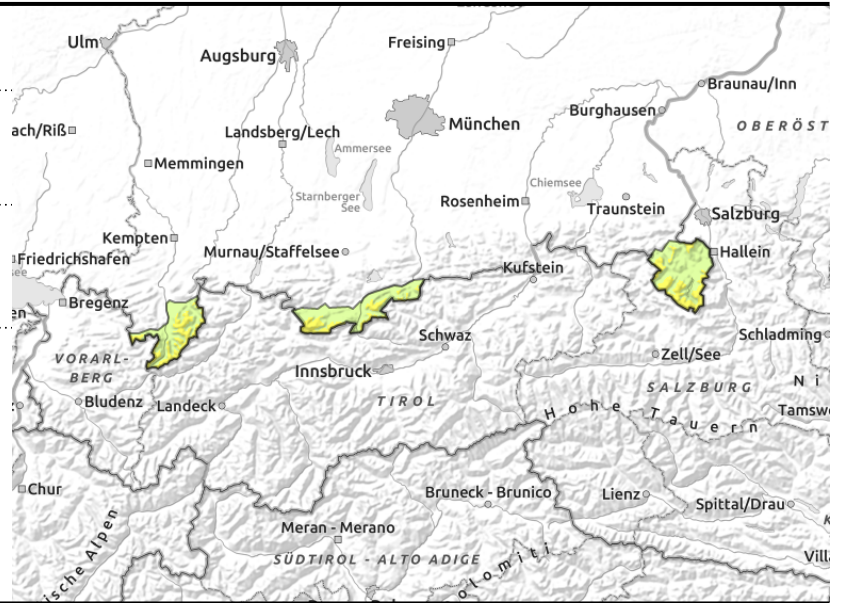
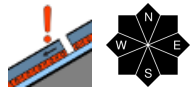
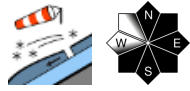


### Expositions



# Avalanche report for Monday, 30.01.2023, morning

## Allgäuer Hauptkamm, Werdenfeller Alpen, Berchtesgadener Alpen



## Snowdrift accumulations growing and higher up sometimes weak old snowpack

Above the timberline avalanche danger is moderate in the morning and rises to considerable during the course of the day. Below the timberline avalanche danger is low. Main problem: fresh snowdrifts. Slab avalanches of medium size can be triggered even by minimum additional loading, i.e., the weight of one sole skier. Avalanche prone locations are found on steep slopes adjacent to ridgelines in N/E/SW aspects as well as in wind-loaded gullies and bowls. Frequency and size of danger zones will increase as the day unfolds.

At high altitudes the old snowpack also contains intermediate layers that are prone to triggering. Especially in the shade slab avalanches can partly be triggered by large additional loading; they can grow to medium size.

### Snowpack structure

The old snowpack surfaces at higher altitudes in south aspects frequently consist of melt-freeze crusts not capable of bearing loads; in north aspects powdery terrain alternates with wind crusts. Layers consisting of expansively metamorphosed snow crystals are embedded in the old snowpack and are prone to triggering. At intermediate altitude, surface hoar has formed in many places. With wind becoming increasingly brisk and the onset of snowfall, trigger-sensitive snowdrift accumulations will be generated during the course of Monday morning.

### Outlook

Rising avalanche danger due to new fallen snow and wind.

#### Avalanche problems



#### Danger ratings

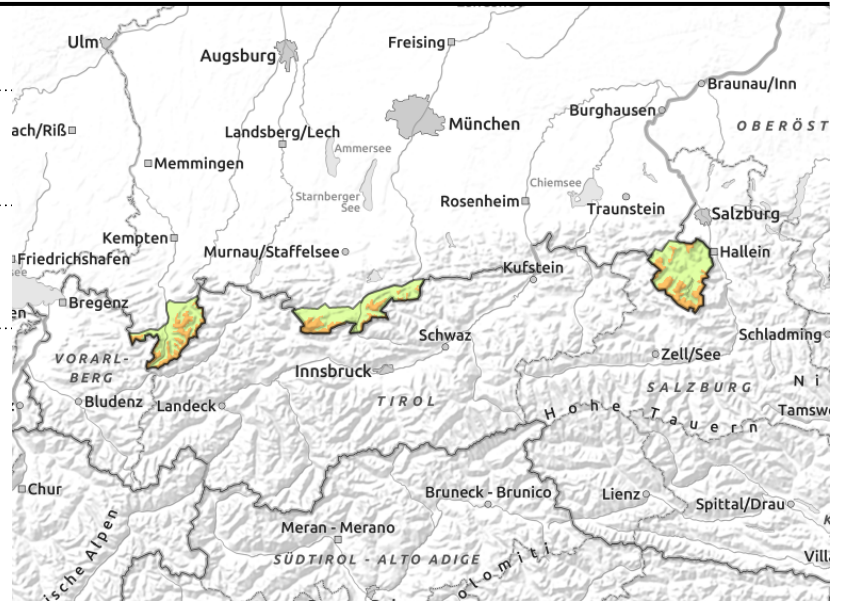
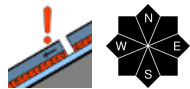
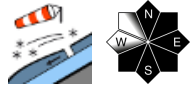


#### Expositions



## Avalanche report for Monday, 30.01.2023, afternoon

### Allgäuer Hauptkamm, Werdenfeller Alpen, Berchtesgadener Alpen



## Snowdrift accumulations growing and higher up sometimes weak old snowpack

Above the timberline avalanche danger is moderate in the morning and rises to considerable during the course of the day. Below the timberline avalanche danger is low. Main problem: fresh snowdrifts. Slab avalanches of medium size can be triggered even by minimum additional loading, i.e., the weight of one sole skier. Avalanche prone locations are found on steep slopes adjacent to ridgelines in N/E/SW aspects as well as in wind-loaded gullies and bowls. Frequency and size of danger zones will increase as the day unfolds.

At high altitudes the old snowpack also contains intermediate layers that are prone to triggering. Especially in the shade slab avalanches can partly be triggered by large additional loading; they can grow to medium size.

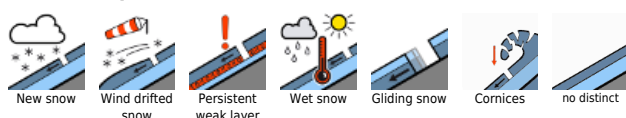
### Snowpack structure

The old snowpack surfaces at higher altitudes in south aspects frequently consist of melt-freeze crusts not capable of bearing loads; in north aspects powdery terrain alternates with wind crusts. Layers consisting of expansively metamorphosed snow crystals are embedded in the old snowpack and are prone to triggering. At intermediate altitude, surface hoar has formed in many places. With wind becoming increasingly brisk and the onset of snowfall, trigger-sensitive snowdrift accumulations will be generated during the course of Monday morning.

### Outlook

Rising avalanche danger due to new fallen snow and wind.

#### Avalanche problems



#### Danger ratings

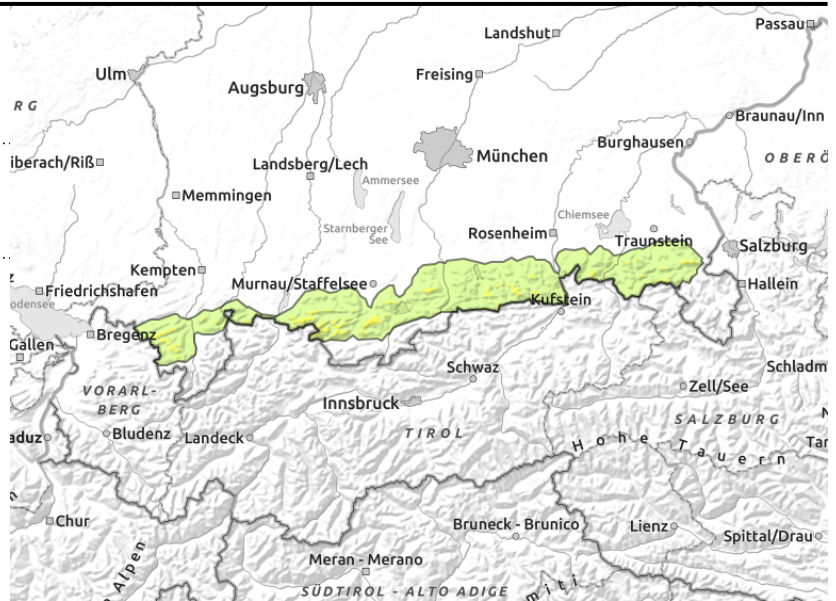
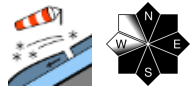


#### Expositions



# Avalanche report for Monday, 30.01.2023

Allgäuer Vorberge, Ammergauer Alpen, Bayerische Voralpen West, Bayerische Voralpen Mitte, Bayerische Voralpen Ost, Chiemgauer Alpen West, Chiemgauer Alpen Ost



## Caution: risk of falling due to small slab avalanches!

Avalanche danger above the timberline is moderate, below that altitude danger is low. Main problem: fresh snowdrifts. Slab avalanches that remain mostly small can be triggered even by minimum additional loading on some steep slopes adjacent to ridgelines in N/E/SW aspects as well as in wind-loaded gullies and bowls. Above the timberline the number of avalanche prone locations will rise slightly in line with the daytime danger cycle.

### Snowpack structure

Due to partly stormy wind and the onset of snowfall small snowdrifts will accumulate on Monday. On the shady side, these will be deposited atop a powdery old snowpack surface and in many places atop surface hoar. On the sunny side and at lower altitudes a melt-freeze crust forms during the night, underneath which faceted crystals are forming. Otherwise, the old snowpack is mostly stable.

### Outlook

Rising avalanche danger due to new fallen snow and wind.

Translated by Jeffrey McCabe, [www.creativtrans.com](http://www.creativtrans.com)

#### Avalanche problems



#### Danger ratings



#### Expositions

