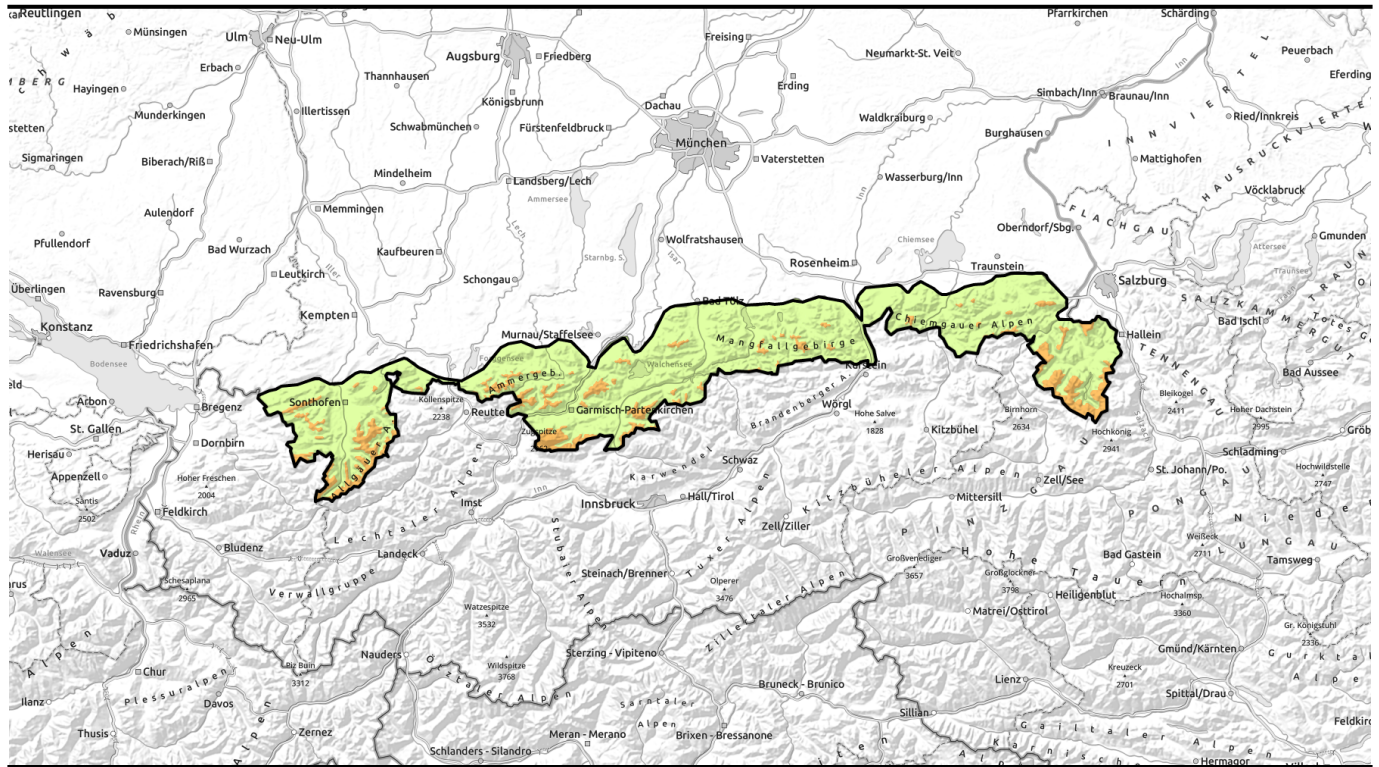


Avalanche report for Tuesday, 24.01.2023



Trigger-sensitive fresh snowdrift accumulations

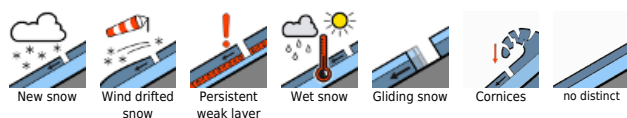


forestline

Allgäuer Vorberge, Allgäuer Hauptkamm, Ammergauer Alpen, Werdenfeller Alpen, Bayerische Voralpen West, Bayerische Voralpen Mitte, Bayerische Voralpen Ost, Chiemgauer Alpen West, Chiemgauer Alpen Ost, Berchtesgadener Alpen



Avalanche problems



Danger ratings

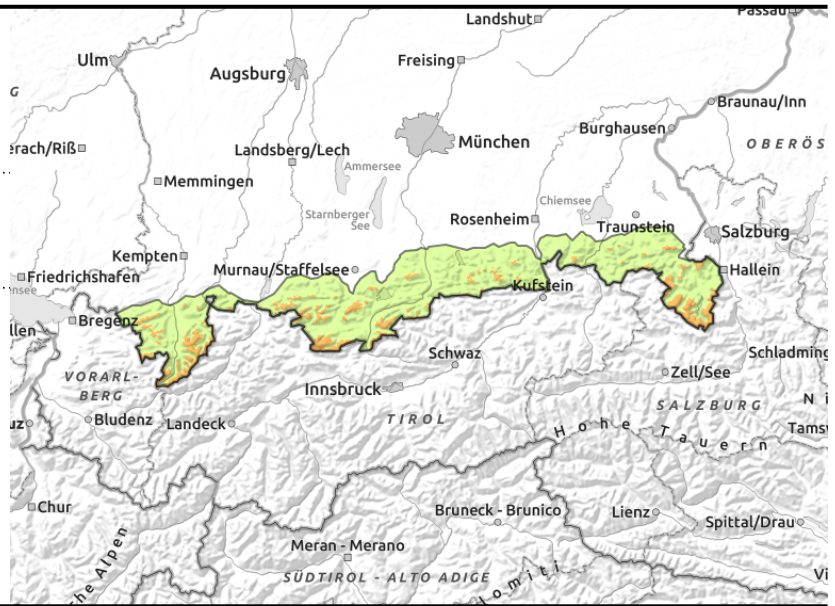
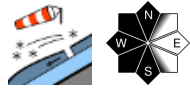


Expositions



Avalanche report for Tuesday, 24.01.2023

Allgäuer Vorberge, Allgäuer Hauptkamm, Ammergauer Alpen, Werdenfelser Alpen, Bayerische Voralpen West, Bayerische Voralpen Mitte, Bayerische Voralpen Ost, Chiemgauer Alpen West, Chiemgauer Alpen Ost, Berchtesgadener Alpen



Fresh and older transported snow above the treeline: CAUTION.

Avalanche danger above the timberline is considerable, danger below that altitude is low. Main problem: fresh snowdrift accumulations. Slab avalanches can be triggered by one sole person on steep ridgeline slopes in N/W/S aspects, in gullies and bowls and behind abrupt discontinuities in the terrain. Above the timberline, the danger zones are more numerous. Avalanches can grow to medium size.

Sunshine above the inversion borderline will make medium-sized naturally triggered loose-snow and slab avalanches possible above the treeline in rocky steep terrain on Tuesday.

Snowpack structure

On Monday night in summit zones, easterly winds will again transport the loose snow over far-reaching areas. Particularly above the timberline, fresh snowdrift accumulations will be generated. The fresh and older drifts lie deposited bonded atop soft layers of expansively metamorphosed (faceted) crystals - they are prone to triggering! At intermediate altitudes the powdery cold snow is free if internal tensions, lies on bare ground. Particularly in shady terrain at high altitudes, weak layers have persisted inside the old snowpack.

Outlook

Avalanche danger will decrease incrementally over the next few days.

Translated by Jeffrey McCabe, www.creativtrans.com

Avalanche problems



Danger ratings



Expositions

