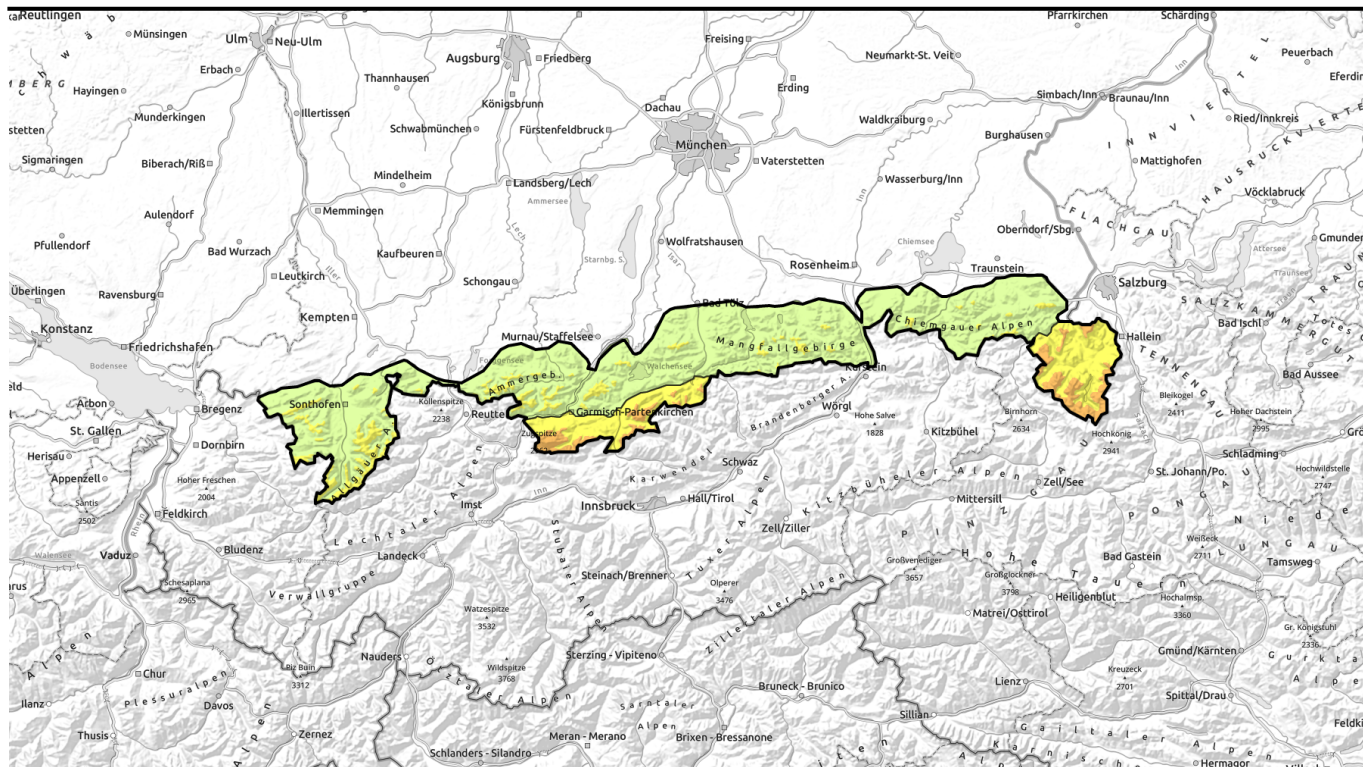


# Avalanche report for **Saturday, 21.01.2023**



## Heavy snowfall in northern orographic lift zone of Bavarian Alps. Rising avalanche danger.



Berchtesgadener Alpen, Werdenfeller Alpen



Allgauer Vorberge, Ammergauer Alpen, Bayerische Voralpen West, Bayerische Voralpen Mitte, Bayerische Voralpen Ost, Chiemgauer Alpen West, Chiemgauer Alpen Ost, Allgauer Hauptkamm



### Avalanche problems



### Danger ratings

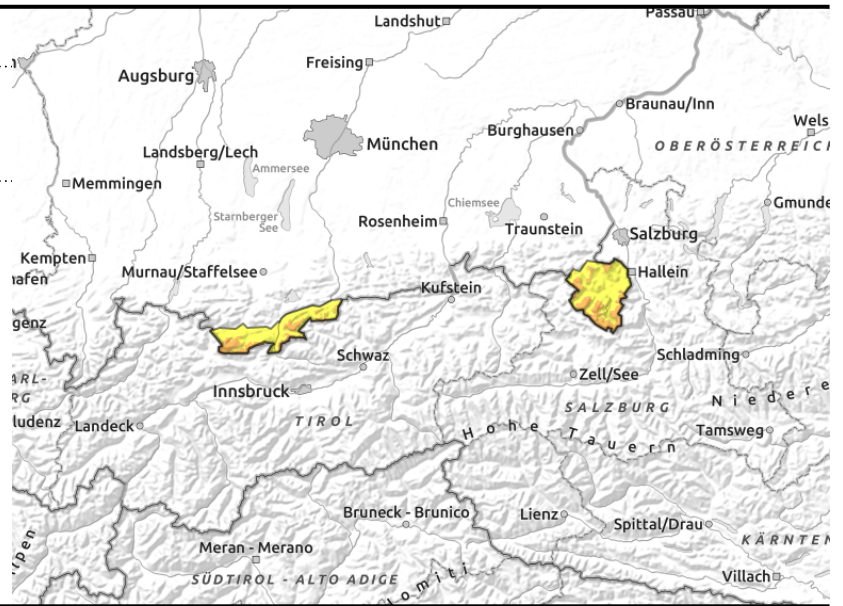
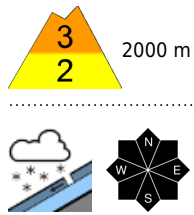


### Expositions



# Avalanche report for **Saturday, 21.01.2023**

## Berchtesgadener Alpen, Werdenfelser Alpen



## Critical amount of new fallen snow and wind at high altitude cause marked increase of avalanche danger

Avalanche danger above 2000 m is considerable; below that altitude it is moderate. The main problem is new snow, bonded by wind in ridgeline terrain and elsewhere loose. Loose snow avalanches can release spontaneously in steep rocky terrain. Slab avalanches can be triggered easily by one individual in wind-exposed summit zones adjacent to ridgelines. In areas with plenty of new snow and where the new snow blanketed encrusted old snowpack surfaces avalanches reach medium size. Danger of being buried. Spread and frequency of the danger zones will increase with ascending altitude.

### Snowpack structure

In the last few days up to half a meter of new snow has fallen and snowfall continues in the northern orographic lift zone. Although the new snow has bonded with the settled old snowpack surface at high altitude, commencing wind will generate fresh snowdrifts which are extremely trigger-sensitive because they are deposited atop loose snow layers. In particular on shady slopes at high altitude weak layers have persisted in the old snowpack in places.

### Outlook

It will stay chilly with ongoing snowfall. The avalanche situation remains tense.

#### Avalanche problems



#### Danger ratings

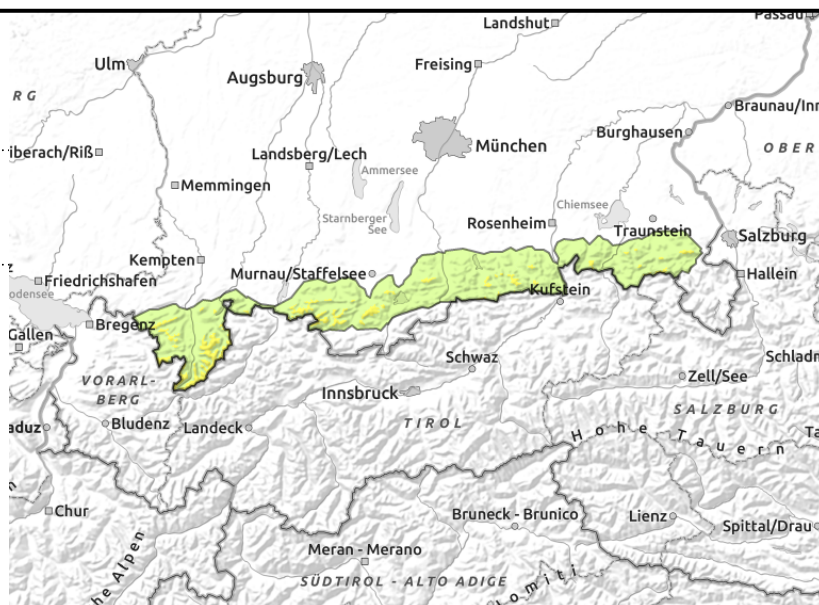
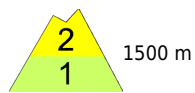


#### Expositions



# Avalanche report for **Saturday, 21.01.2023**

**Allgäuer Vorberge, Ammergauer Alpen, Bayerische Voralpen West, Bayerische Voralpen Mitte, Bayerische Voralpen Ost, Chiemgauer Alpen West, Chiemgauer Alpen Ost, Allgäuer Hauptkamm**



## Fresh snow partly prone to triggering.

Avalanche danger above 1500 m is moderate, below that altitude danger is low. The main problem is new snow which is mostly loose and close to ridgelines bonded by wind. Isolated loose snow avalanches can release spontaneously in steep rocky terrain. Slab avalanches can be triggered by a single individual in wind-exposed summit zones adjacent to ridgelines. In regions with plenty of new snow and where encrusted old snowpack surfaces are blanketed avalanches can grow to medium size. Danger of being buried.

### Snowpack structure

Up to 30 cm of fresh snow blanket the ground, encrusted old snowpack surfaces and at high altitudes compact older snowdrift accumulations. Onset of northerly wind; snowdrifts accumulate in summit zones adjacent to ridgelines which are extremely trigger-sensitive because they are deposited atop loose snow layers.

### Outlook

It will stay chilly with snowfall. Depending on the new snow quantities and wind, avalanche danger can rise.

Translated by Jeffrey McCabe, [www.creativtrans.com](http://www.creativtrans.com)

#### Avalanche problems



#### Danger ratings



#### Expositions

